

School Profile 2008-2009



OTTAWA-CARLETON
DISTRICT SCHOOL BOARD

Rockcliffe Park Public School

JK-6 English/French Immersion



350 Buena Vista Rd.
Ottawa, Ontario
K1M 1C1

Phone: 613-749-5387
Fax: 613-749-6333

School hours:
8:30 a.m. - 3:00 p.m.

[www.rockcliffeparkps.o
cdsb.ca/](http://www.rockcliffeparkps.o
cdsb.ca/)

Principal
Laurel Tye (Acting)

Vice Principal
Monik Beauchemin
(Acting)

Office Administrator
Donna Burns

Chief Custodian
Pierre Constantineau

School Council Chair
Alison Puddingcomb

*Superintendent of
Instruction*
Cathy Nevins

School Trustee
Bronwyn Funicello

Chair of the Board
Lynn Scott

*Director of Education/
Secretary of the Board*
Lyll Thomson

*General Board
Information*
(613) 721-1820

www.ocdsb.ca

Our School

"Rockcliffe Park Public School is a safe, caring place where all students are encouraged to strive for academic excellence, physical fitness, an appreciation of the arts and respect for the environment. Rockcliffe Park Public School provides a learning environment where dedicated staff, parents and the community work together to develop responsible, productive citizens of the world."

Rockcliffe Park Public School is a dual track school, which offers the regular English program and French immersion program to students from kindergarten to grade six.

Our Students

- Rockcliffe Park Public School has an enrollment of 526 students, representing over 22 countries and languages, including .When our students graduate from Rockcliffe Park Public School, they go to Queen Elizabeth Public School, York Street Public School and Glashan PS for grade seven and eight. 62% of the student population is enrolled in the French immersion program.

Comments from our students:

"RPPS is a super, great school."

"Hard work, accomplishment and safety."

"I love coming to school"

" I enjoy the sports and teachers"

Our Staff

- Rockcliffe Park Public School has 31 teachers and 8 support staff. Teachers at Rockcliffe Park Public School have Specialist certificates in French as a Second Language, Special Education, English as a Second Language, Physical Education and Primary Education.

Here are some comments from our parents about our staff:

The staff...

"Provides a supportive educational experience, heightening student achievement."

"Upholds a longstanding tradition of parents and teachers working together."

" Is caring and devoted"

"Communicates regularly"

Educating for success – Inspiring learning and building citizenship

Our Community

Parents and Community

- Rockcliffe Park Public School draws from the local Rockcliffe Community. Lindenlea and New Edinburgh for its regular English program which includes children from the various embassies in the community.
- The French immersion students come to the school from Sandy Hill and Lower Town as well as the immediate area.
- We welcome volunteers. Last year our parents and community partners accumulated more than 3000 volunteer hours in various school activities school activities. These included helping students with reading, organizing fund-raising events, accompanying students on field trips and sporting events as well as Book Fair.
- The connection with the community is a strong one. The school office is located adjacent to the Village Police station and the Library. The Village and the school share the use of the grounds and the ice rink in winter. The Rockcliffe Child Care Center which opened in 1998 is attached to the school.
- The Rockcliffe Park Public School Council is a volunteer group of members of the school community, parents/guardians, dedicated to strengthening educational opportunities and partnerships with the parents, teachers, staff and community.



Mission Statement

RPPS is: "A great place to be.
We put forth our maximum
effort to be the best that we
can be."



Programs and Services

Academic Programs

- Regular English program with Core French. Junior and Senior Kindergarten have 20 minutes a day of Core French. Grades one to six have 40 minutes per day.
- English to French Immersion instruction for grade 2 and 3 is one hour per day. Grades 4,5 and 6 receive 2 hours of English instruction in the areas of Language and Math.

Classroom Organization

- This year Rockcliffe Park Public School has 10 English classes and 15 French immersion classes.

Special Education and ESL Programs

- Special education learning center (SELC)
- Remedial support and educational assessment with the Learning Support Teacher (English only)
- English as a Second language (grades 1 to 6)



Facilities and Resources

- A library/resource center with over 13,500 books in French and English
- Computer technology in every class
- A computer lab with 27 PC computers as well as three mini labs throughout the school.
- Two gyms
- A soccer pitch and running track
- A primary and a junior play structure

Safe Schools Initiatives

- Rockcliffe Park Public School has a Code of Behaviour, which was developed by the staff and parents.
- Safe and Caring Schools initiative continues.
- Ongoing counseling and dispute mediation by trained staff
- Anti-Bullying model that is used is Stop, Talk, Tell.
- Ron Morrish model based on his book, "With All Due Respect."

Clubs and Activities

- Intramural sports (Cross-Country Running, Soccer, Volleyball, Basketball and Track and Field)
- Skating, Ski Club
- Spirit Days
- Fund-raisers for charitable organizations
- Monthly assemblies
- Computer Club
- Book Fair
- Multicultural activities
- Play Day
- Concerts
- Volunteer Appreciation Day, Grandparents Reading Day
- Chess Club
- Dance Club
- Plays

Achievement and School Improvement Planning

Measures of Student Achievement and Success

- All grade 3 students in the Board are assessed on a group ability test (Canadian Cognitive Abilities Tests).
- The students maintain a portfolio of their work. The portfolio is shared with parents in a student-led conference.
- The measures of achievement and success are continuous and ongoing.
- Students are evaluated through written and oral work.
- Daily observation, checklists and rubrics are used to track progress.
- Students are provided with group projects and opportunities to evaluate themselves and their peers. Goal setting is encouraged to allow students to track their own progress.
- Students at Rockcliffe Park Public School participate in provincial testing in grades 3 and 6. We have consistently scored higher than the provincial and Board averages in all six test areas. Their results are on the following pages.

School Improvement Plans and Initiatives

- Along with the analysis of our EQAO results, we have reviewed daily observations of student performance, report card marks, OCDSB tests, Canadian Cognitive Abilities tests results (as available) and a variety of demographic factors.
- We are extremely pleased with our EQAO results. We continue to surpass the Board and the provincial results in all 6 categories.
- At Rockcliffe Park Public School we strive for every student and teacher to become a life long learner. Strategies have been introduced to support teachers who are programming for English as a Second language (ESL) and students with learning difficulties.

Initiatives:

- The Annual Book Fair provides funds to support school initiatives. Each year the students are exposed to a variety of authors who visit the school in association with the Book Fair.
- The school is continuing to assist teachers in delivering the best possible program in technology.
- Jump Rope for Beacon Schools: Last year we raised more than \$14 000. for needy children in Ottawa.
- Lesotho/Canada Twinning: We were made the first Canadian school to be twinned with a school in Lesotho, Africa (Guardian Angel). We have had several presentations about school life in Africa. We share letters with penpals. We exchange teaching practices. We sponsor an awards program and we have raised funds for the purchase of books and gym equipment.
- School Yard Improvement: We have completed building a reading and board game area at a cost of \$25 000.00. We have revitalized the front of the school. At a cost of \$9500.00.

Leadership Recognition

"Leadership in the OCDSB is the demonstration of personal initiative to achieve a positive outcome."

Students:

Our students are always seeking ways to help others. Our students also participate in the Jump Rope for Needy Schools in the spring which raised over \$14 000.00 last year. Our students participate in all sporting events. We were also fortunate to win several championships. The banners are displayed in the school gymnasium. We also hold several weekly Twoonie Drives to support needy children and adults in the community. We continue our international commitment by sponsoring Mokoena school in Lesotho.

Staff:

Our staff members have a wealth of professional qualifications including Bachelors and Masters degrees in Arts, Fine Arts, Physical Education and Sciences, as well as additional qualifications in Special Education, English as a Second Language, Music, Visual Arts, Guidance, and Computers in Education. They have actively participated in numerous Board-wide professional development activities in literacy and numeracy, and we recognize their initiative by providing and supporting opportunities for further professional growth. We also recognize staff leadership via personal interactions with one another, letters of thanks, school announcements, school newsletters, assemblies, performance appraisals, and our principal's report to school council.

Parents/Guardians/Volunteers:

Last year, our volunteers contributed over 3000 hours of support for the benefit of students in our school. Our dedicated school council meets monthly and contributed over \$28 000.00 to support our drama productions, our technology and our sports program. As invaluable partners, we thank our parents, guardians and volunteers on an on-going basis, and look for opportunities to acknowledge them such as school announcements, our principal's report to school council, school newsletters, and our annual volunteer appreciation event.

Community:

We recognize our community partners through our school programs, school announcements, school newsletters, school web site, principal's report to school council, and thank you cards. We also include them in our events and award ceremonies.

Results of EQAO Primary Assessment

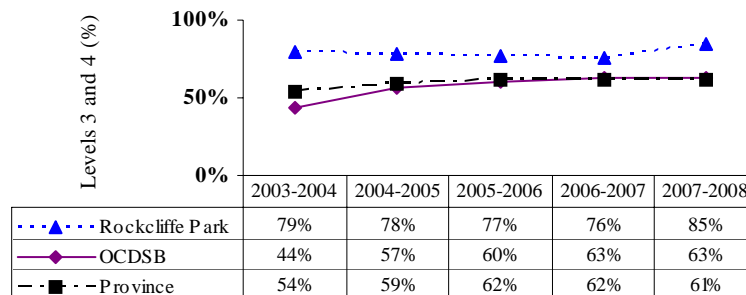
Each year, students participate in the province-wide assessment of reading, writing, and mathematics. This assessment by the Education Quality and Accountability Office (EQAO) is based on the Ontario Curriculum and is one way in which student achievement is measured. Results from these assessments should be viewed with caution since the achievement of a few students, particularly in small schools, can have a large impact on overall results. Further, it is important to view student achievement in the context of other available information, some of which is contained in this profile.

The following table describes primary students in this school for 2007-2008 testing:

	Number of Students	ESL/ELD	Fully Exempt	Receiving Special Education support (excluding gifted)	First language learned at home other than English
Primary	71	20%	0%	13%	18%

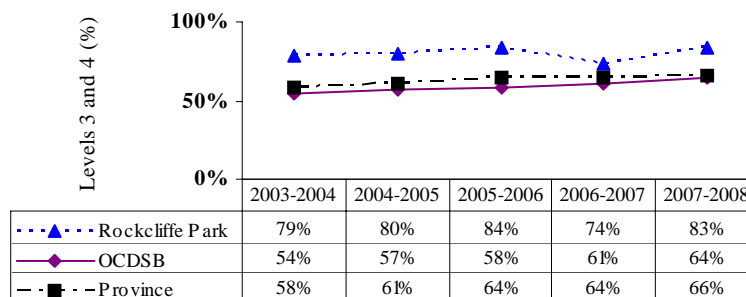
Results for *all primary students* in this school, compared to those for the district and province, are presented below. More detailed information about student performance on these assessments can be found at www.eqao.com.

**Grade 3 Reading:
Percentage of Students at Levels 3 and 4 (Method 1)**



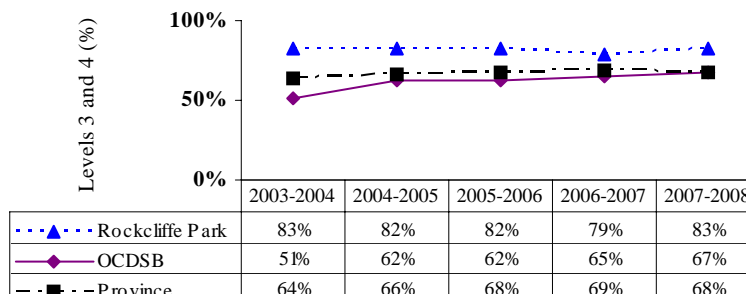
0% of the students were exempt, 0% had no data.

**Grade 3 Writing:
Percentage of Students at Levels 3 and 4 (Method 1)**



0% of the students were exempt, 0% had no data.

**Grade 3 Mathematics:
Percentage of Students at Levels 3 and 4 (Method 1)**



0% of the students were exempt, 0% had no data.

Results of EQAO Junior Assessment

Each year, students participate in the province-wide assessment of reading, writing, and mathematics. This assessment by the Education Quality and Accountability Office (EQAO) is based on the Ontario Curriculum and is one way in which student achievement is measured. Results from these assessments should be viewed with caution since the achievement of a few students, particularly in small schools, can have a large impact on overall results. Further, it is important to view student achievement in the context of other available information, some of which is contained in this profile.

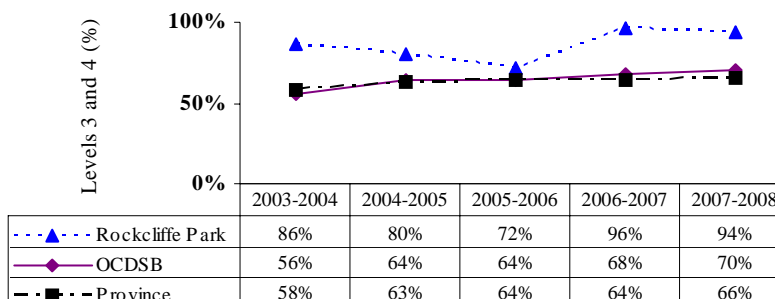
The following table describes junior students in this school for 2007-2008 testing:

	Number of Students	ESL/ELD	Fully Exempt	Receiving Special Education support (excluding gifted)	First language learned at home other than English
Junior	53	25%	0%	11%	21%

Results for *all junior students* in this school, compared to those for the district and province, are presented below. More detailed information about student performance on these assessments can be found at www.eqao.com.

Grade 6 Reading:

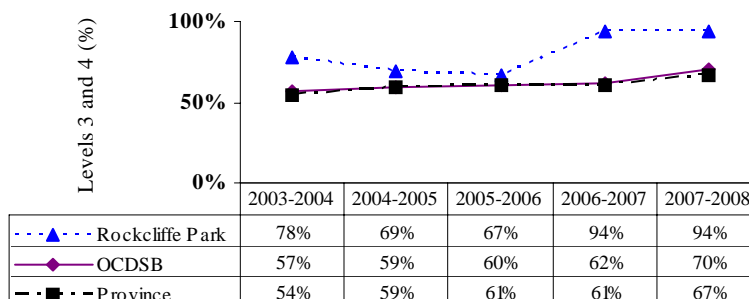
Percentage of Students at Levels 3 and 4 (Method 1)



2% of the students were exempt, 0% had no data.

Grade 6 Writing:

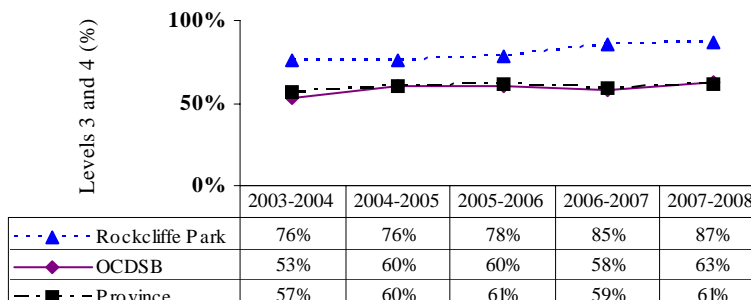
Percentage of Students at Levels 3 and 4 (Method 1)



0% of the students were exempt, 0% had no data.

Grade 6 Math:

Percentage of Students at Levels 3 and 4 (Method 1)



2% of the students were exempt, 0% had no data.