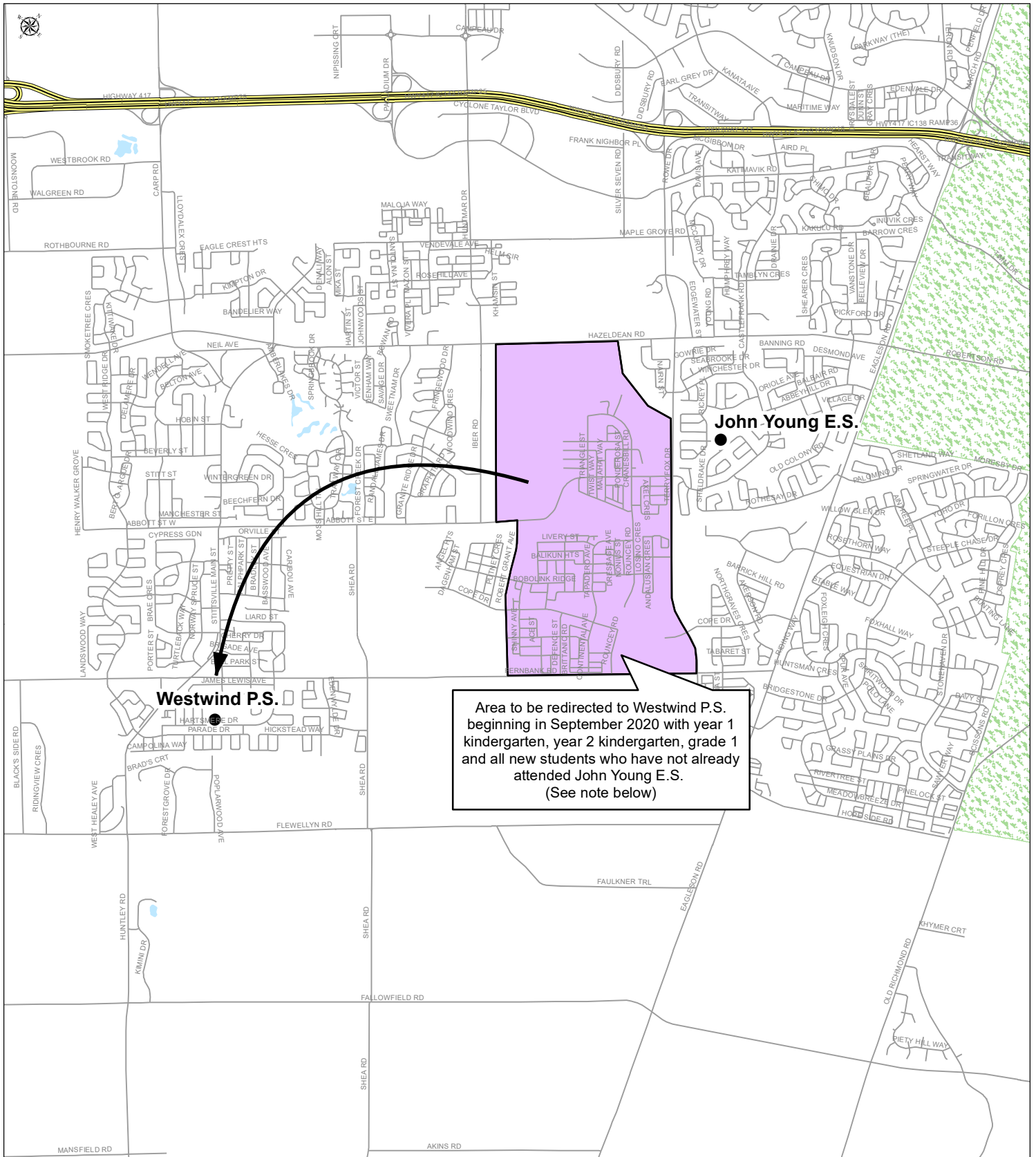


Approved - John Young E.S. Interim Attendance Boundary Redirection



Note: This interim attendance boundary redirection will remain in effect until such time as the anticipated new Fernbank elementary school is opened or until other accomodation measures are approved and is subject to the sibling provision outlined in Report 20-004 John Young Elementary School - Interim Accomodation Measures Study - Approval.