

RIVERSIDE SOUTH SECONDARY SCHOOL STUDY

Opening Grade Structure, Program,
Attendance Boundary, and
Other Related Changes



Public Consultation Information Package

April 26th, 2023
7:00pm

Gymnasium
Steve MacLean PS
4175 Spratt Rd, Gloucester

Table of Contents

	Page
1. Study Timeline	3
2. Study Overview	4
3. Proposed Boundary	4-5
4. Potential Impacts to Schools	6-7
5. Next Steps/Conclusions	8-9

NEW RIVERSIDE SOUTH SECONDARY SCHOOL

Revised Timeline

Activity	Date
<p>Notice of Intention to Commence Study and Approve Study and Timeline</p> <ul style="list-style-type: none"> ➤ Committee of the Whole Meeting ➤ Board Approval of Study Consultation Plan and Timeline 	<p>January 2023</p> <p>January 2023</p>
<p>Consultative Stage</p> <ul style="list-style-type: none"> ➤ Formation of the Advisory Group ➤ Information Meeting #1 with Advisory Group (in-person format) ➤ Information Meeting #2 with Advisory Group (in-person format) ➤ Public Consultation Meeting (in-person format) 	<p>January 2023</p> <p>February 2023</p> <p>March 2023</p> <p>April 2023</p>
<p>Recommendation and Decision Making Stage</p> <ul style="list-style-type: none"> ➤ Regular Committee of the Whole Meeting – Presentation of Staff Recommendation Report ➤ Regular Board Meeting – Final Decisions 	<p>June 2023</p> <p>June 2023</p>
<p>Communication and Implementation Stage</p> <ul style="list-style-type: none"> ➤ Communication of Board Approved Decision ➤ Implementation of Board Approved Decision 	<p>June 2023</p> <p>September 2025</p>

Study Overview

Background

In the fall of 2020, the Board received notice of capital priority funding for the construction of a secondary school in Riverside South. Funding for the construction of a grade seven to twelve, 1516 pupil place secondary school in the Riverside South area was granted from the Ministry of Education based on the September 2019 Capital Priorities submission.

The proposed Riverside South Secondary School is located at 702 Earl Armstrong Road.

Working Group Meetings

Before the secondary school is opened, a boundary and opening grade structure must be established. Working group meetings with community associations, trustees, and representatives of potentially impacted schools were held over the last few months to garner feedback on the preliminary boundary. The boundary presented at the public meeting was refined through these working group meetings.

Public Consultation Meeting

The purpose of the public meeting is to seek public comments and feedback on the opening grade structure, program offering, and attendance boundary for the new Riverside South Secondary School. Comments received during, and after the public meeting may result in changes to the proposed boundary and opening grade structure. Once comments are reviewed, a final report will be presented to Board outlining the recommended attendance boundary and opening grade structure.

Proposed Boundary

The proposed boundary for the new Riverside South Secondary School is shown on page 5. The preliminary boundary for the new Riverside South Secondary School was structured around:

- Steve MacLean Public School's Attendance Boundary
- Vimy Ridge Public School's Attendance Boundary
- The east side of Farley Mowat Public School's Attendance Boundary

as a basis for the feeding pattern for the new Secondary School. This produced a new secondary school attendance boundary that is heavily founded on the existing elementary feeder school attendance boundaries with the intent to create a community-based secondary school for Riverside South.

The new Riverside South Secondary School is funded as a grade seven to twelve school. This will lead to impacts to both elementary, and secondary schools in the area. As a result of this study, modifications to the existing attendance boundaries of impacted schools will occur.

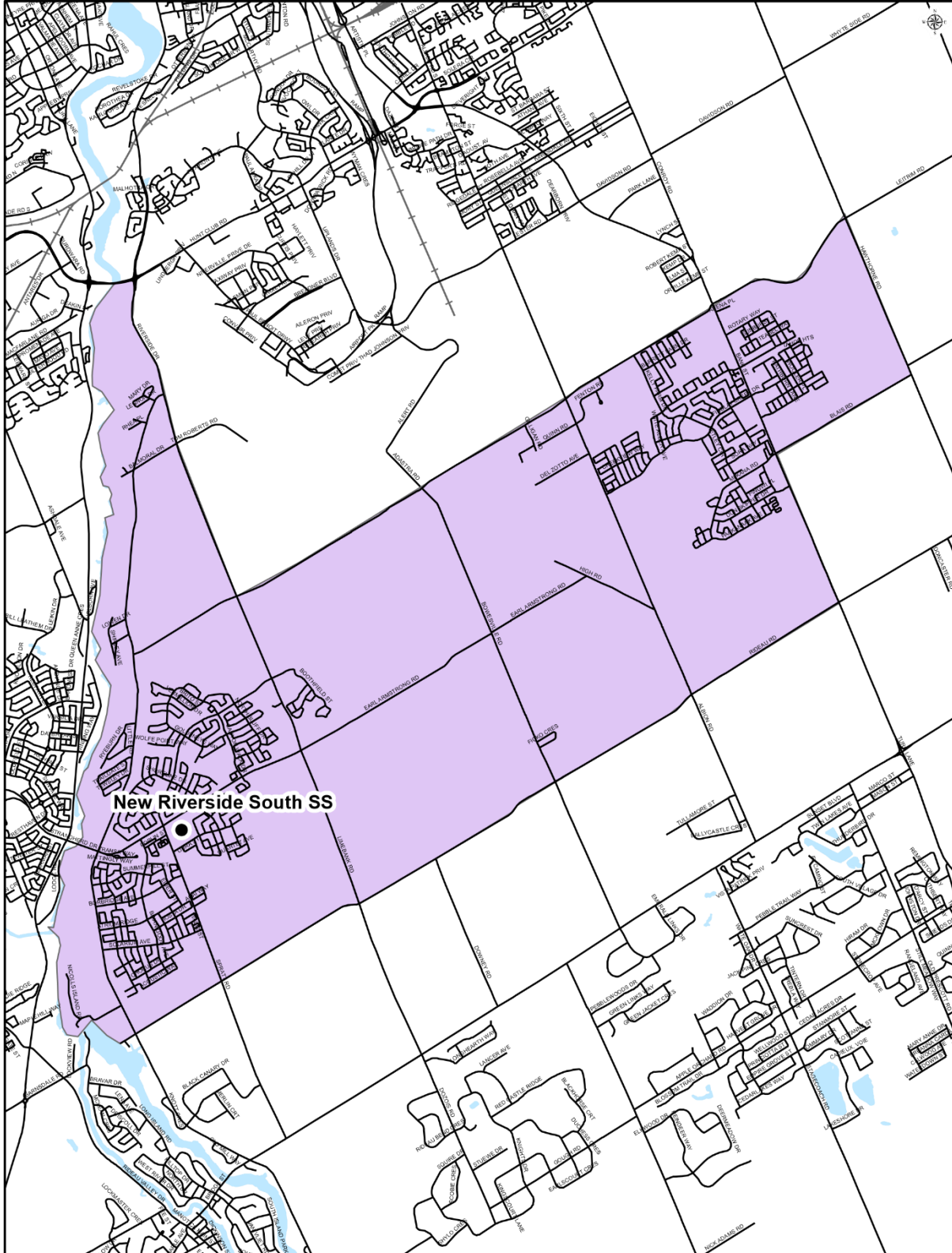


OTTAWA-CARLETON
DISTRICT SCHOOL BOARD



OTTAWA-CARLETON
DISTRICT SCHOOL BOARD

NEW RIVERSIDE SOUTH SECONDARY SCHOOL
Proposed Attendance Boundary
Grade 7 to 12
English and Immersion Attendance Boundary



Potential Impacts to Schools

The proposed boundary will impact five elementary schools. Table 1 describes the proposed changes, and overall impact on each affected elementary school.

SCHOOL	PROPOSED CHANGES	OVERALL IMPACT
Blossom Park PS	<ul style="list-style-type: none"> • 7-8 MFI Redirection to RSSS 	Minimal
Farley Mowat PS	<ul style="list-style-type: none"> • Adjustment of eastern attendance boundary • Eastern JK-6 Redirection to Steve MacLean PS 	Significant
Kars on the Rideau PS	<ul style="list-style-type: none"> • 7-8 ENG, EFI, MFI Redirection to RSSS 	Minimal
Steve MacLean PS	<ul style="list-style-type: none"> • Adjustment of attendance boundary • 7-8 ENG and EFI Redirection to RSSS 	Moderate
Vimy Ridge PS	<ul style="list-style-type: none"> • Adjustment of attendance boundary • 7-8 ENG and EFI Redirection to RSSS 	Moderate

Table 1: Potential Impacts to Elementary Schools

The proposed boundary will impact six secondary schools. Table 2 describes the proposed changes, and overall impact on each affected secondary school.

SCHOOL	PROPOSED CHANGES	OVERALL IMPACT
Brookfield HS	<ul style="list-style-type: none"> Redirect southern portion of attendance boundary to RSSS 	Minimal
Gloucester HS	<ul style="list-style-type: none"> Redirect western portion of Gloucester HS/ Osgoode Township HS option area to RSSS 	Minimal
Merivale HS	<ul style="list-style-type: none"> Redirect Merivale HS/ South Carleton option area to RSSS 	Significant
Osgoode Township HS	<ul style="list-style-type: none"> Redirect western portion of Gloucester HS/ Osgoode Township HS option area to RSSS Expand Osgoode Township HS and South Carleton HS option area 	Minimal
Ridgemont HS	<ul style="list-style-type: none"> Redirect southern portion of attendance boundary to RSSS 	Moderate
South Carleton HS	<ul style="list-style-type: none"> Redirect Merivale HS/ South Carleton option area to RSSS Expand Osgoode Township HS and South Carleton HS option area 	Moderate

Table 2: Potential Impacts to Secondary Schools



Next Steps

Public feedback on the proposed attendance boundary and opening grade structure for the new Riverside South Secondary School will assist Planning Staff to present a report to Board. Specifically, Planning Staff is interested in public feedback on:

- Pros and Cons of the Preliminary Attendance Boundary of the new Secondary School
- Pros and Cons of the Boundary Adjustments to the Potentially Impacted Schools
- Modifications to the 4-6 MFI Program Attendance (for Blossom Park Public School and Kars on the Rideau Public School)
- How students (and their younger siblings) should be grand-parented into the new Secondary School

Should you wish to provide feedback on the proposed consultation plan at a later time, please send comments to the Planning Department at:

Email: newriversidesouthss.study@ocdsb.ca

Mail: OCDSB, Planning Department, 133 Greenbank Road, Ottawa, ON, K2H 6L3

PLEASE NOTE: WEDNESDAY MAY 10 2023 IS THE LAST DAY TO SUBMIT COMMENTS



Should you have any comments about the proposed Riverside South Secondary School Boundary and Opening Grade Structure, please write them on the following lines:

Please give your comments to the Planning Staff once completed. Thank you.