



RIVERSIDE SOUTH SECONDARY SCHOOL STUDY

Opening Grade Structure, Program,
Attendance Boundary, and
Other Related Changes



Working Group Meeting #1 Information Package

February 23rd, 2023
7:00 to 9:00 pm

Library
Steve MacLean
4175 Spratt Rd, Gloucester



Table of Contents

	Page
1. Introduction and Background	1
2. The Working Group	1-2
3. Key Considerations	2-3
4. Study Objectives	3
5. Consultative Process and Next Steps	4
6. Revised Study Timeline	5
7. General Location Map of New Riverside Secondary School Site	6
8. Composites of Current Program Attendance Boundary Maps	7-14
9. School Summaries	15-17
10. Historical Enrolment, Current Enrolment, and Projections	17-56
 <i>Additional Supporting Information</i>	
<i>Anticipated 25-year Yield from Greenfield Development</i>	<i>57-59</i>

Introduction and Background

This study has been initiated by the Ottawa-Carleton District School Board (OCDSB) in order to establish the attendance boundary, program offering, and opening grade structure for the new Riverside South secondary school. The new school is scheduled to open to students in September 2025.

The OCDSB does not have a secondary school in Riverside South therefore the need for the construction of a secondary school to serve students within Riverside South has been a topic of discussion for many years. In October 2020, the Board received confirmation of capital funding from the Ministry of Education for the construction of a 1,516 pupil place secondary school.

The Riverside South area is a relatively new urban expansion area located on the east side of the Rideau River, while the Findlay Creek neighbourhood is a rapidly growing area located to the east of Riverside South, and bordered by planned greenfield development. The preliminary boundary that staff has put out for discussion is envisioned to serve the existing and future grade 7 to 12 students of Riverside South and Findlay Creek.

The new secondary school site is located at the southeast intersection of Spratt Road and Earl Armstrong Road. The site is 8 hectares in size or just over 19.75 acres (see General Location Map).

On January 31st, 2023, the OCDSB approved a study timeline and consultation plan for the new Riverside South secondary school. The plan includes the formation of a working group.

The Working Group

The working group is to be comprised of Board staff and representatives from each of the following schools:

- Blossom Park Public School;
- Brookfield High School;
- Farley Mowat Public School;
- Gloucester High School;
- Kars on the Rideau Public School;
- Merivale High School;
- Osgoode Township High School;
- Ridgemont High School;

- South Carleton High School; and
- Steve MacLean Public School.

The boundaries and/or grade structures of these schools are expected to be impacted by the opening of the new school.

In addition to those listed above, schools in other areas could be invited to provide representatives to the working group meetings if options considered impact their school communities. The role of the working group is to provide localized input and advice with regard to proposed options, community and neighbourhood alignments, and parental and family preferences as they relate to student movement. Representatives will also update their school councils regarding the study process and its progress.

Community associations located within the attendance boundary of study area schools have been invited to send one representative each to participate in the working group.

Area trustees have been notified of the process and are invited to attend all working group meetings.

Key Considerations

Commencing the study at this time will enable relevant information to be communicated to impacted students and families in a timely fashion.

The study will examine the attendance boundary, program, and opening grade structure options for the new secondary school. These options will take into consideration updated student enrolment and school-age population trends, residential development patterns, and student distribution data.

As part of the study process, current local attendance boundaries and feeding patterns will be reviewed in an effort to ensure that logical alignments are put in place, and a balancing of enrolment numbers is achieved. Where possible, the location of future residential development and planned new school openings will be taken into consideration.

A unique consideration for this study concerns what assumptions should be made around the share of enrolment the new school will experience upon opening. Given the District's lack of local secondary accommodation in the Riverside South area, it is anticipated that the school

may receive a significantly higher number of students than what might otherwise be expected based on current enrolment trends in the area.

In 2021, approximately 37% of children aged 12 to 13 (intermediate level) residing in the Riverside South and Findlay Creek area chose to attend their designated OCDSB school. At the secondary level, 31% of the area's children aged 14 to 17 chose to attend their designated OCDSB secondary school.

In other areas of the District where local OCDSB secondary school accommodations exist, the rates of attendance are higher. For example, Longfields-Davidson Heights Secondary School in Barrhaven has a secondary student yield of approximately 46%.

Study Objectives

1. **To determine the attendance boundary, program offering, and opening grade structure for the new Riverside South secondary school.**
2. **The creation of a set of attendance boundaries and programs for local schools which:**
 - i) **help to balance enrolments at local area schools;**
 - ii) **are logical and sustainable in the longer-term;**
 - iii) **align program feeding patterns;**
 - iv) **provide for viable student programming; and**
 - v) **account for future planning considerations such as the opening of additional schools in future years.**
3. **The examination of designated school directions for new and future residential development areas.**
 - i. **Are there any boundary adjustments that should be considered to create more geographically logical attendance boundaries and/or better balance future enrolments between area schools?**
 - ii. The above could result in attendance boundary adjustments of Blossom Park Public School: Brookfield High School, Farley Mowat Public School, Gloucester High School, Kars on the Rideau Public School, Merivale High School, Osgoode Township High School, Ridgemont High School, South Carleton High School, and Steve MacLean Public School.

Consultative Process and Next Steps

The working group will meet as necessary throughout the winter and spring months at various local area schools. The goal of the group will be to come to a consensus regarding a proposed plan or a set of options to be presented at a Public Consultation Meeting, currently scheduled to take place in April 2023.

These options will address key study objectives and issues, in particular to determine the attendance boundary, program offering and opening grade structure for the new Riverside South secondary school.

The purpose of the Public Consultation Meeting is to receive input from impacted school communities and members of the public with regard to the presented proposal. Parents and community members will be encouraged to provide input at the meeting held that evening, however, feedback is appreciated throughout the process.

Once input from the community is reviewed and potential revisions are evaluated, staff in the Planning Department will prepare a recommendation report to the Board's Committee of the Whole in June 2023. That meeting will include an opportunity for delegations from the public and Trustee debate regarding staff's recommendations.

A final decision by the Board regarding the review is currently scheduled to take place in June 2023.

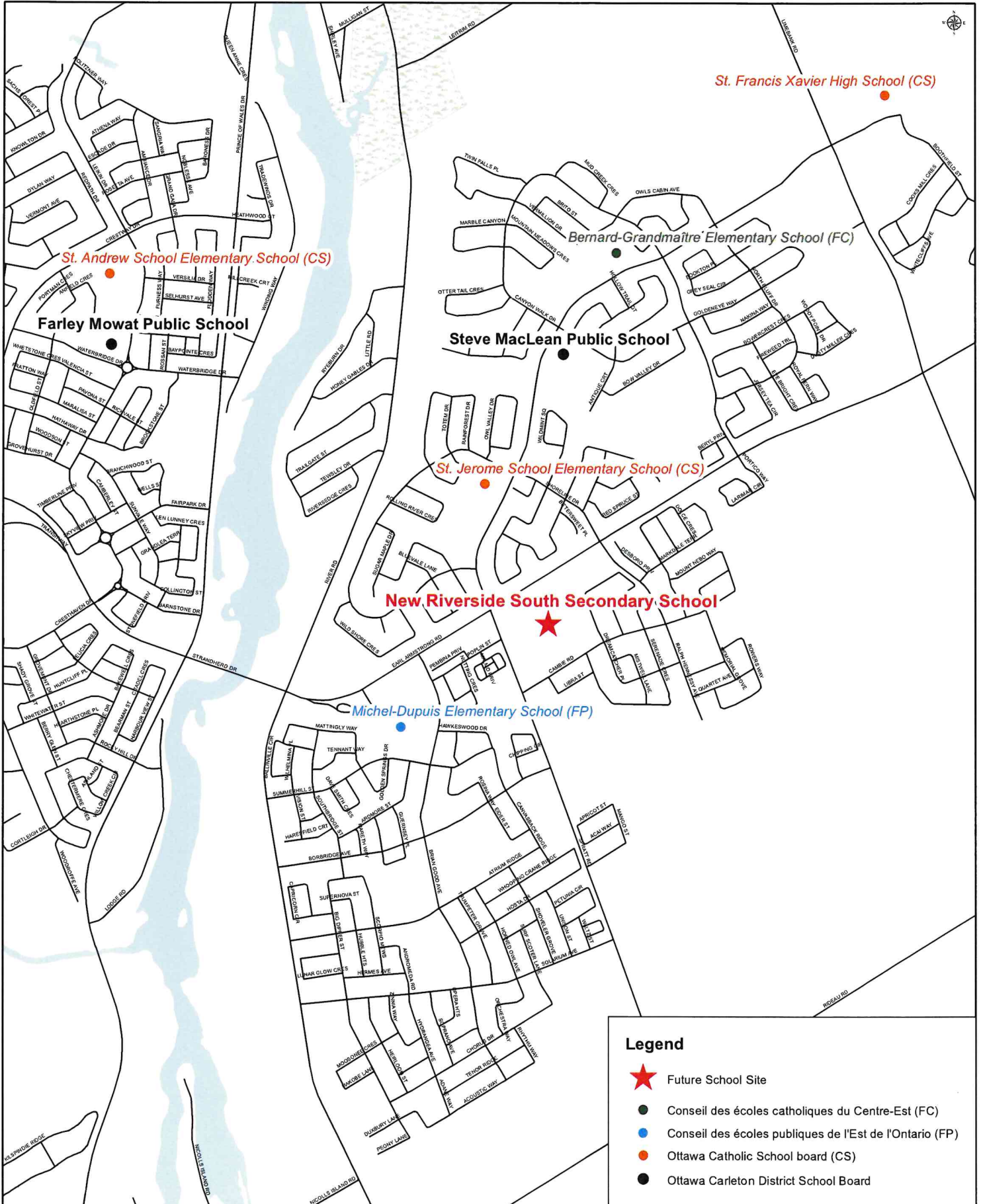
Public comments and/or questions regarding the review may be sent in by:

Email: NewRiversideSouthSS@ocdsb.ca
Mail: New Riverside South Secondary School Study
Planning Department
133 Greenbank Road
Nepean, ON K2H 6L3

NEW RIVERSIDE SOUTH SECONDARY SCHOOL Revised Timeline

Activity	Date
Notice of Intention to Commence Study and Approve Study and Timeline	
➤ Committee of the Whole Meeting	January 2023
➤ Board Approval of Study Consultation Plan and Timeline	January 2023
Consultative Stage	
➤ Formation of the Advisory Group	January 2023
➤ Information Meeting #1 with Advisory Group (in-person format)	February 2023
➤ Information Meeting #2 with Advisory Group (in-person format)	March 2023
➤ Information Meeting #3 with Advisory Group (in-person format)	March/April 2023
➤ Public Consultation Meeting (in-person format)	April 2023
Recommendation and Decision Making Stage	
➤ Regular Committee of the Whole Meeting – Presentation of Staff Recommendation Report	June 2023
➤ Regular Board Meeting – Final Decisions	June 2023
Communication and Implementation Stage	
➤ Communication of Board Approved Decision	June 2023
➤ Implementation of Board Approved Decision	September 2025

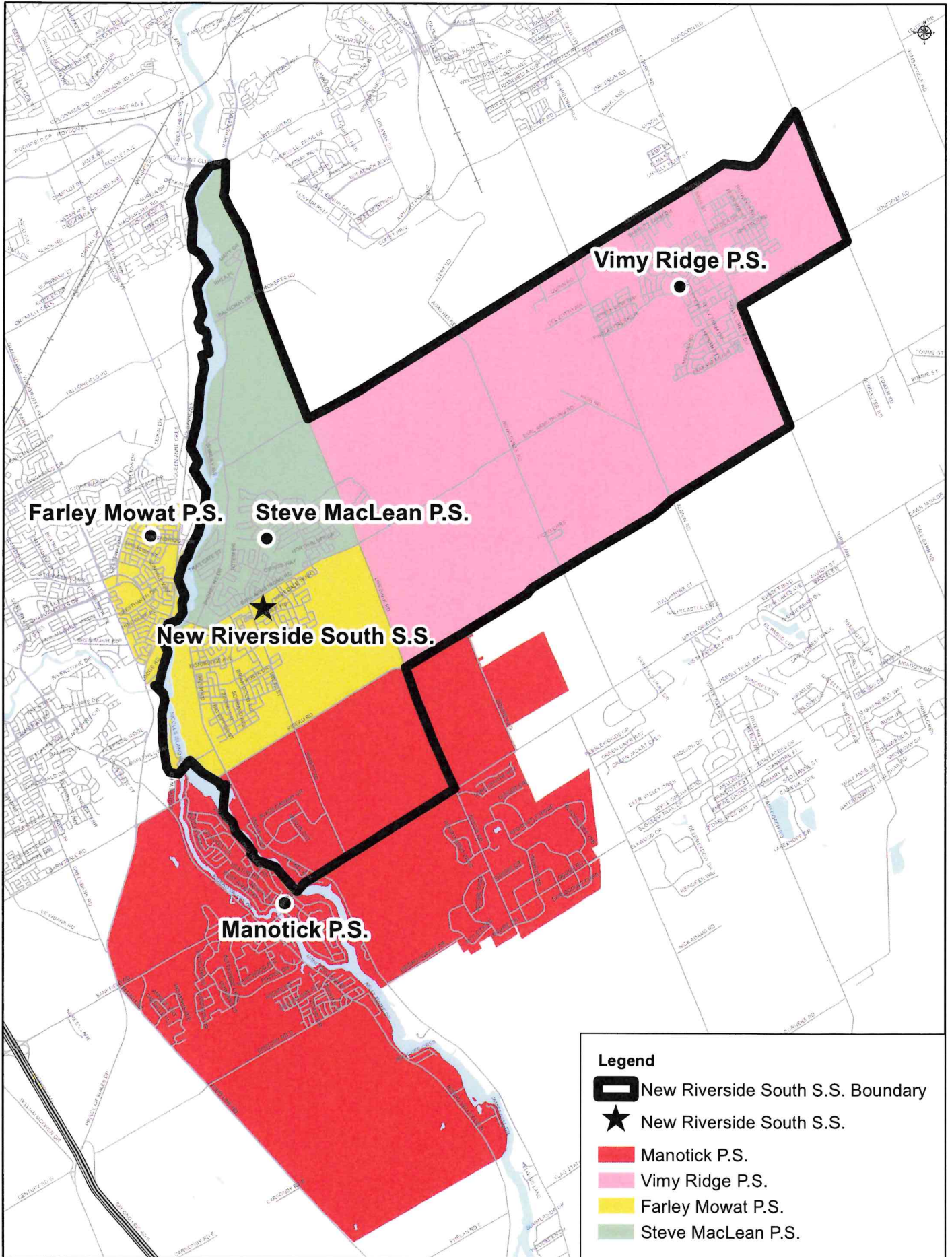
New Riverside South Secondary School General Location Map





OTTAWA-CARLETON
DISTRICT SCHOOL BOARD

Current JK to 5 REG Composite Map



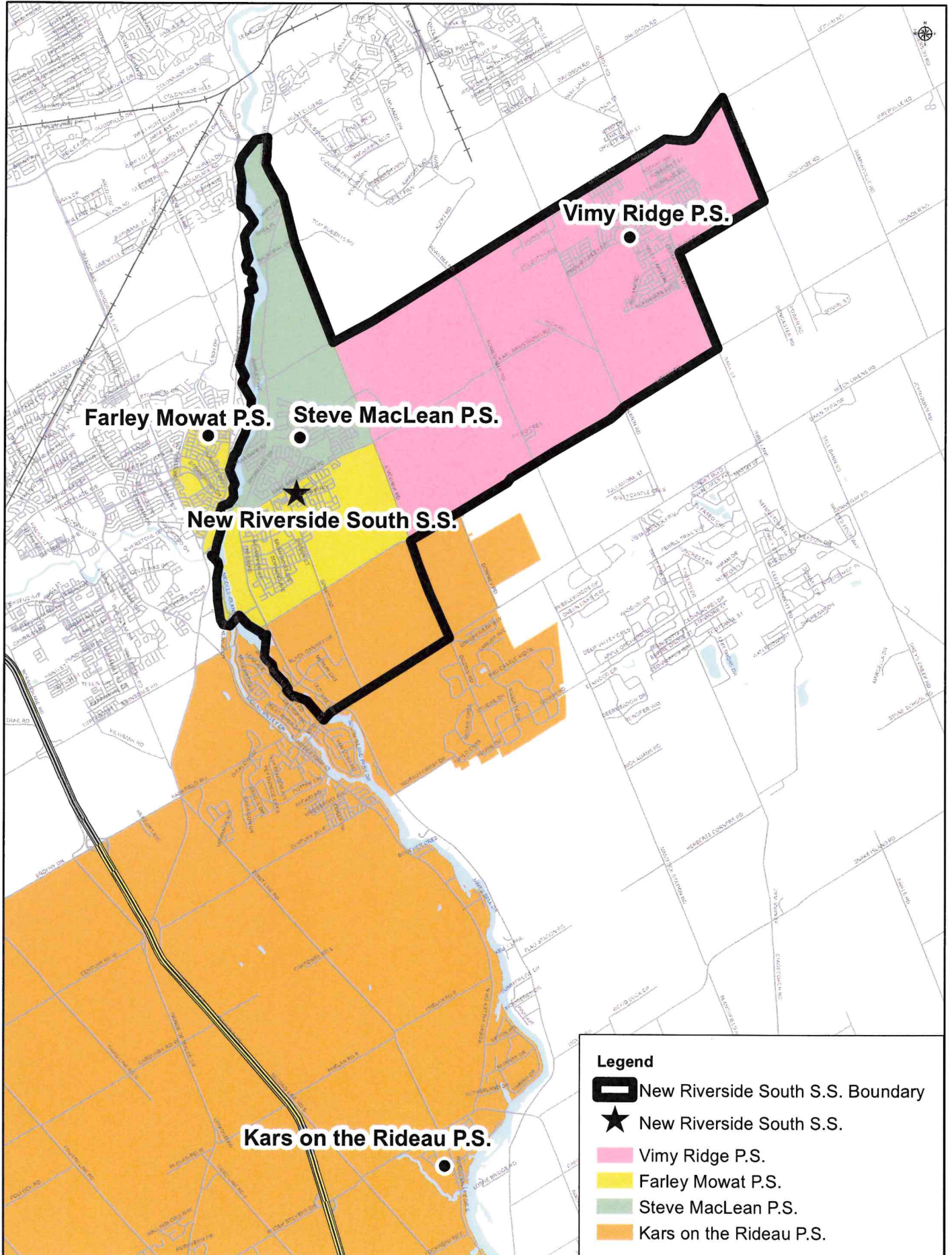
Legend

-  New Riverside South S.S. Boundary
-  New Riverside South S.S.
-  Manotick P.S.
-  Vimy Ridge P.S.
-  Farley Mowat P.S.
-  Steve MacLean P.S.



OTTAWA-CARLETON
DISTRICT SCHOOL BOARD

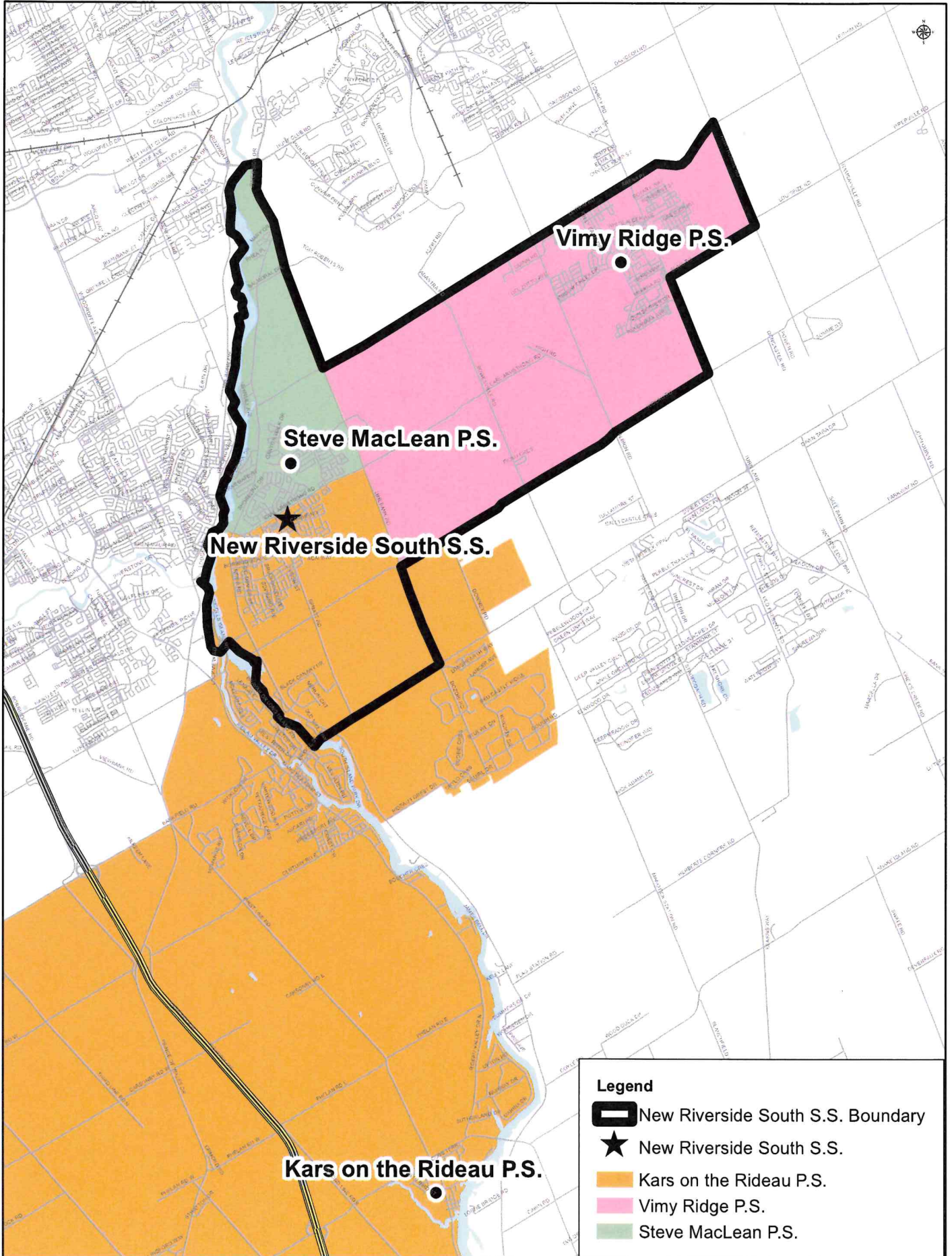
Current Grade 6 REG Composite Map





OTTAWA-CARLETON
DISTRICT SCHOOL BOARD

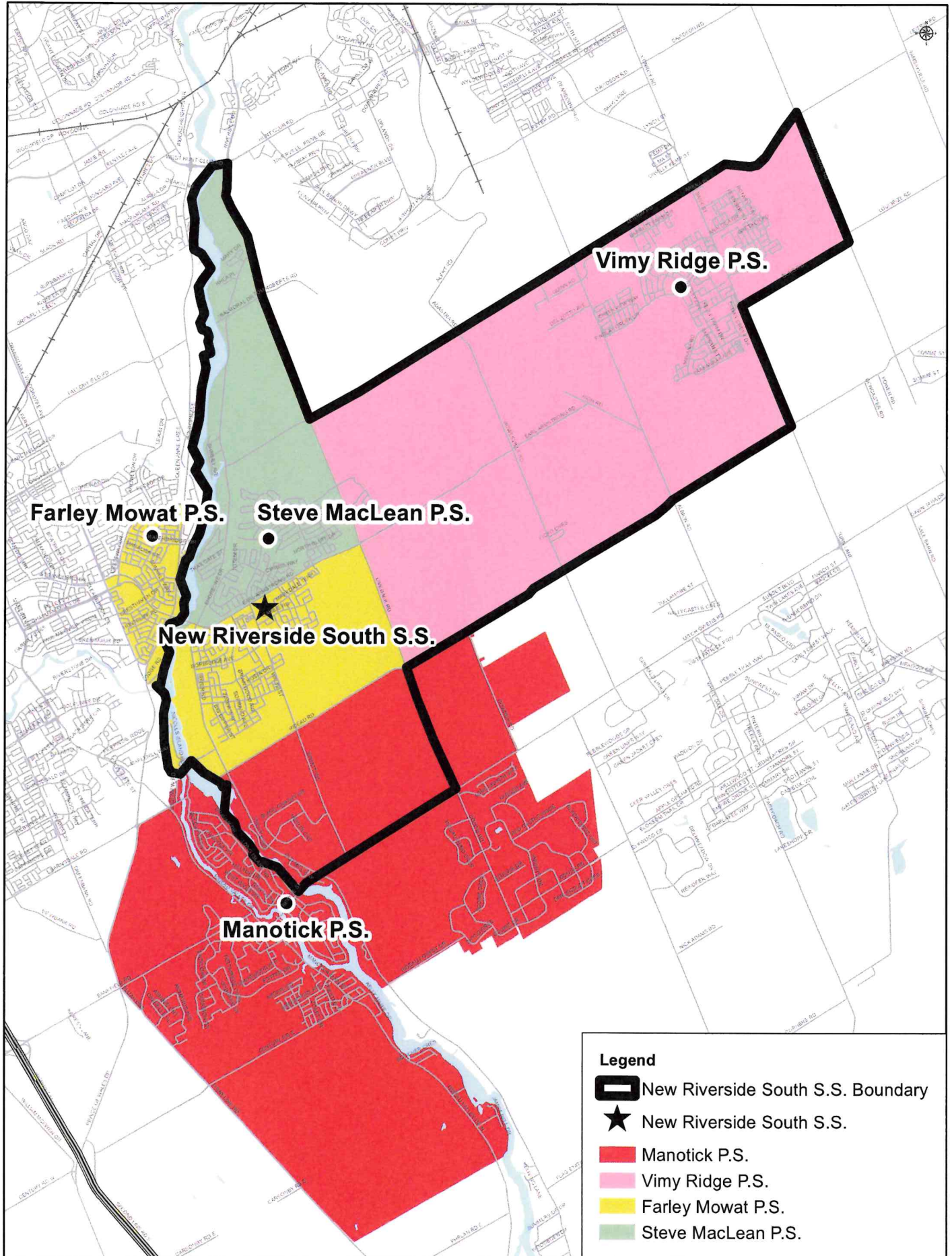
Current 7 to 8 REG Composite Map





OTTAWA-CARLETON
DISTRICT SCHOOL BOARD

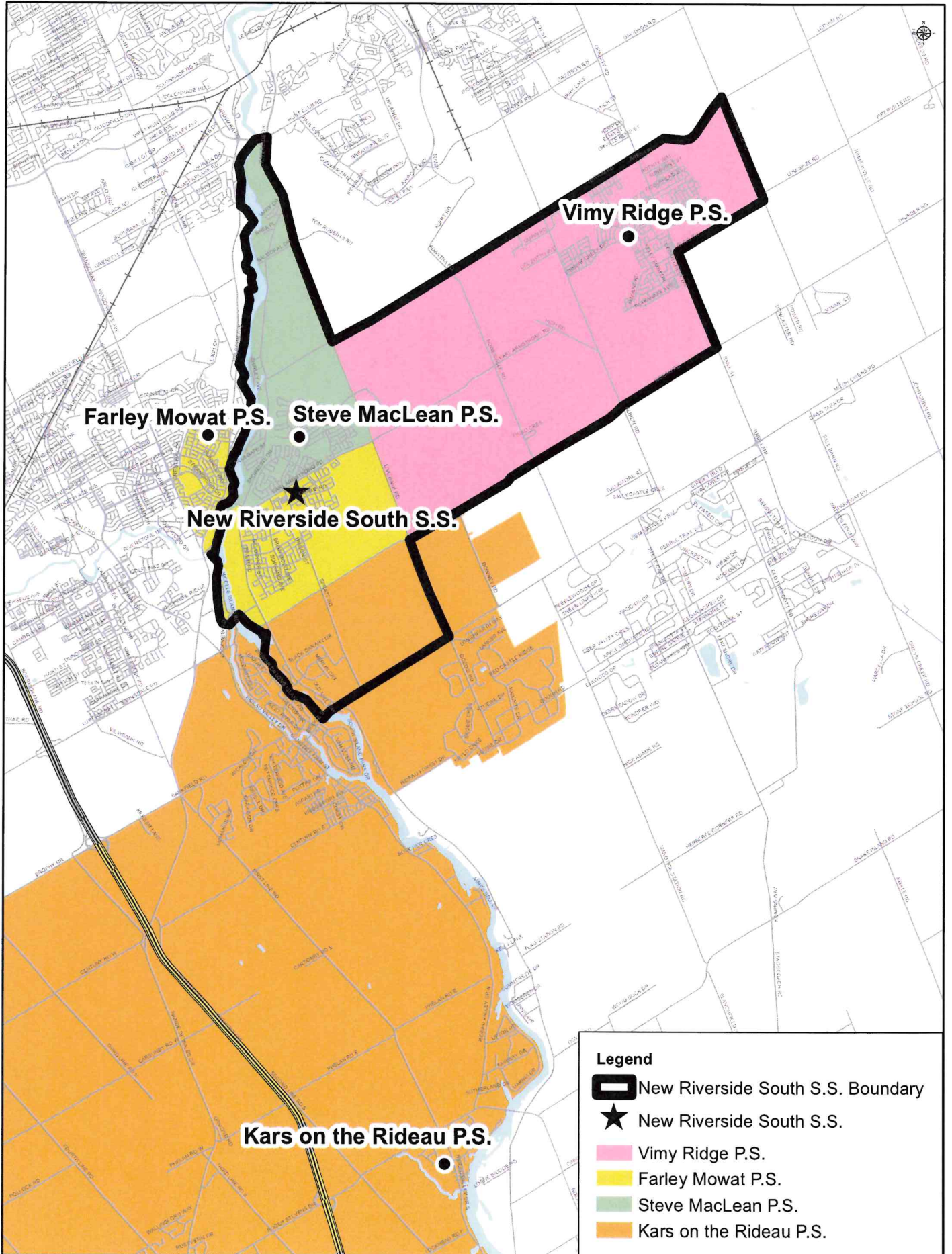
Current JK to 5 EFI Composite Map





OTTAWA-CARLETON
DISTRICT SCHOOL BOARD

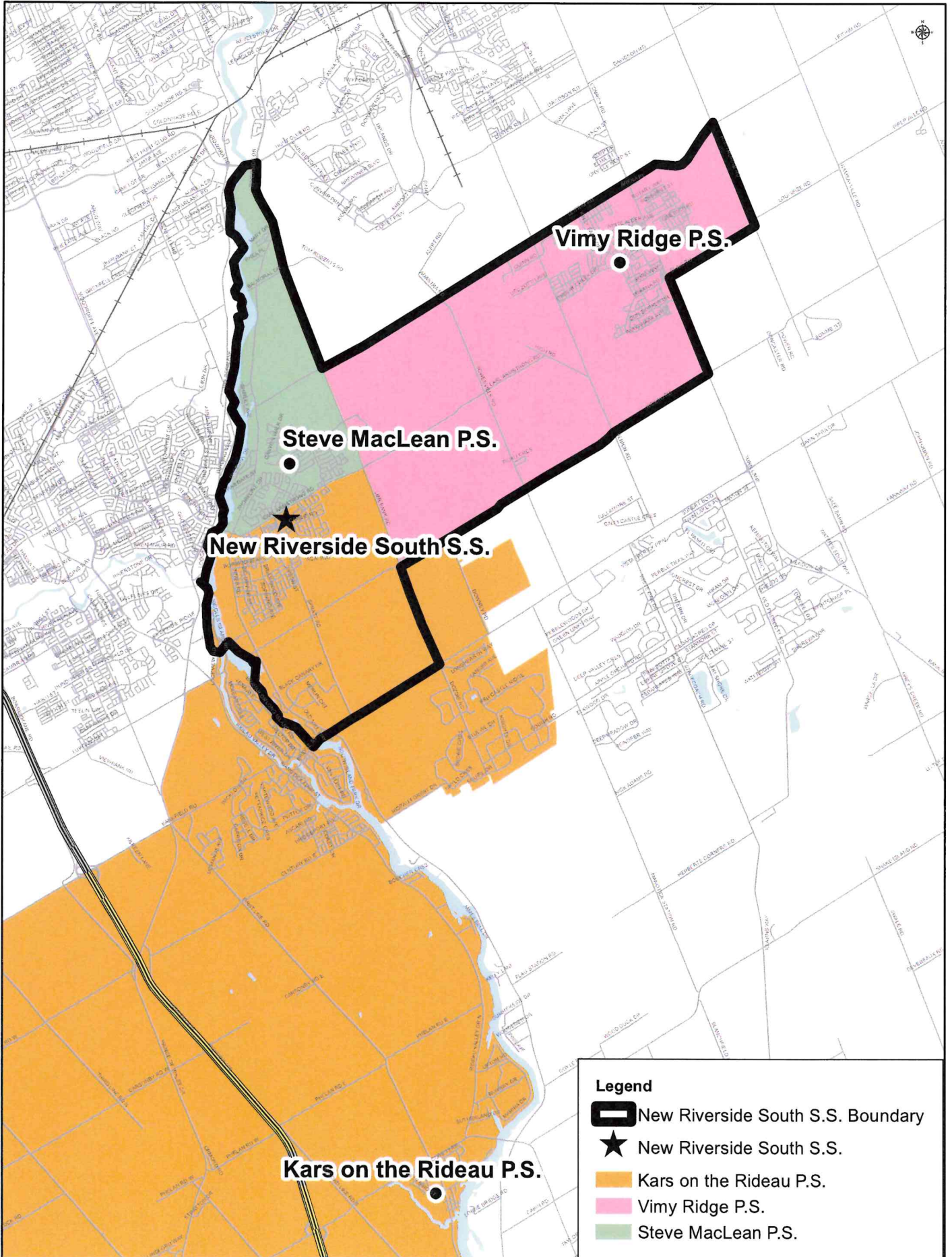
Current Grade 6 EFI Composite Map





OTTAWA-CARLETON
DISTRICT SCHOOL BOARD

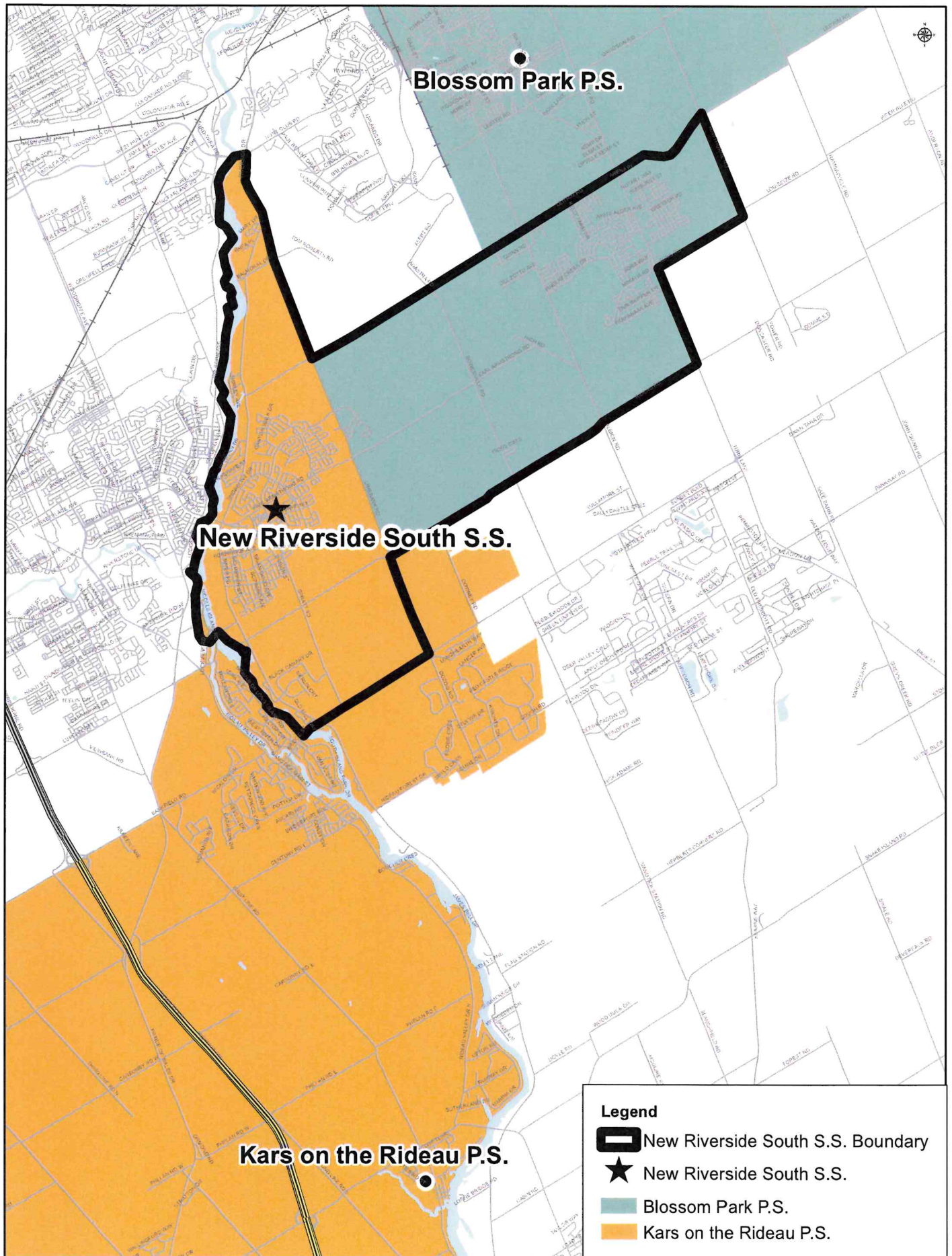
Current 7 to 8 EFI Composite Map





OTTAWA-CARLETON
DISTRICT SCHOOL BOARD

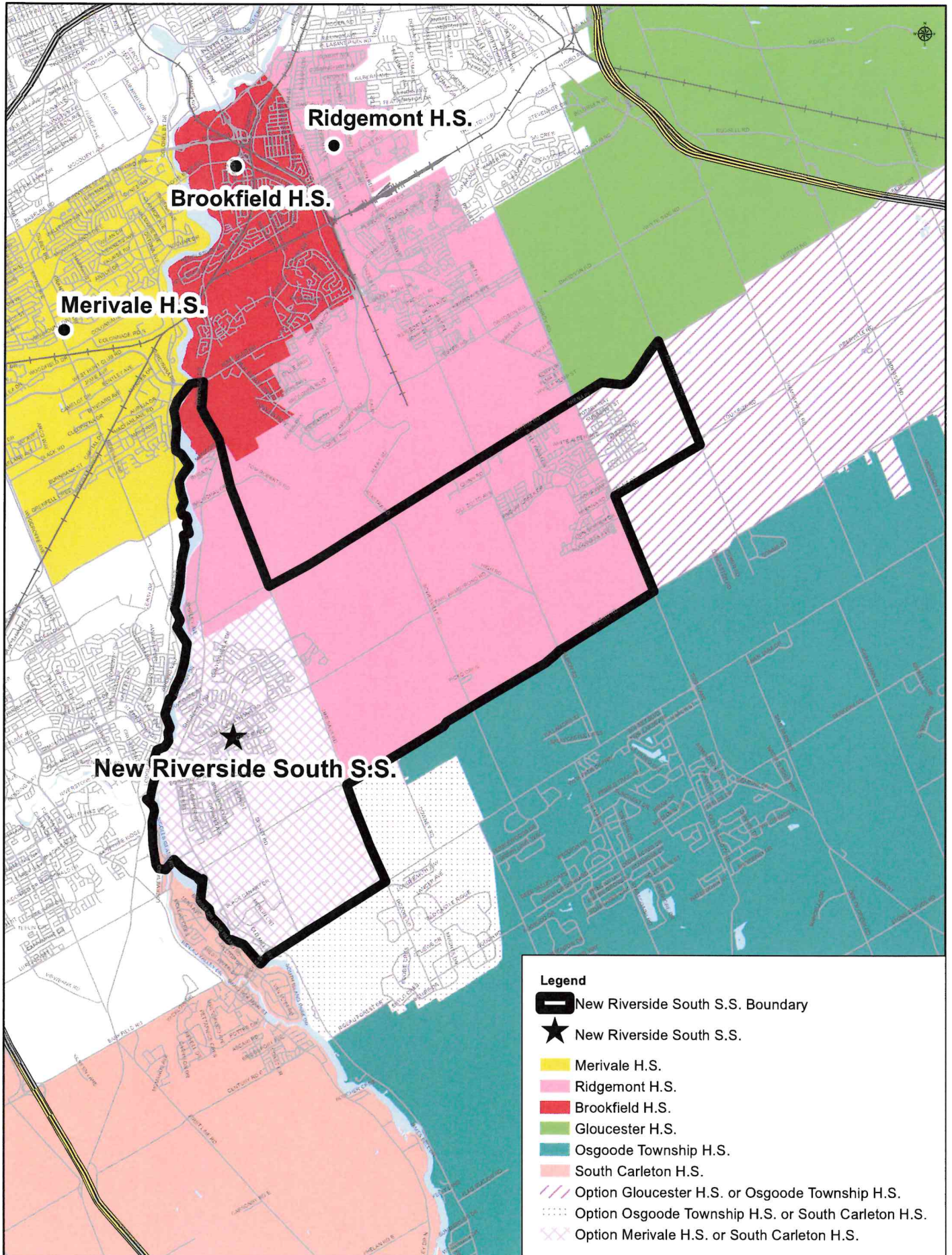
Current 4 to 8 MFI Composite Map





OTTAWA-CARLETON
DISTRICT SCHOOL BOARD

Current 9 to 12 Composite Map



School Summaries for 2022-2023

Blossom Park Public School

- K to Grade 8 ENG, 4-8 MFI
- MFI students feed in from Blossom Park PS, Dunlop PS, Riverview AS, Robert Bateman PS, Roberta Bondar PS, Sawmill Creek ES, and Vimy Ridge PS
- Students feed into Canterbury HS, Hillcrest HS, Gloucester HS, and Ridgemont HS for grades 9 to 12
- Preliminary October 31 2022 enrolment is 349
- School capacity is 429; Utilization is 81%
- Currently there is 1 portable on site required for instructional use
- Forecast for enrolment at the school is a slight decline over the next 10 years

Brookfield High School

- Grades 9-12 English and Immersion
- English as Second Language Centre
- Two Specialist High Skills Major programs: Health and Wellness (Personal Fitness & Nutrition) and Non-Profit – Community and International Development
- Language Learning Disability Program
- Autism Spectrum Disorder Credit Support Program
- Students feed in from Alta Vista PS and Fielding Drive PS
- Preliminary October 31 2022 enrolment is 787
- School capacity is 1116; Utilization is 71%
- There are currently 0 portables on site
- Forecast for enrolment at the school is anticipated to fluctuate within the low enrolment range over the next 10 years

Farley Mowat Public School

- K to Grade 6 ENG, EFI
- Students feed into Kars on the Rideau PS
- Students west of the Rideau River feed into Longfields-Davidson Heights SS
- Preliminary October 31 2022 enrolment is 623
- School capacity is 554, Utilization rate is 112%
- There are currently 4 portables on site
- Forecast for enrolment is an increase in enrolment within the next 10 years

Gloucester High School

- Grades 9 to 12 English and Immersion
- English as a Second Language Centre
- English Literacy Development Centre
- Four Specialist High Skills Major programs: Automotive repair, High Performance Sports, Construction Trades, and Youth Voices (Aboriginal and other Cultures)
- Three special education programs: Developmental Disabilities Program, Learning Disability Program, and Autism Spectrum Disorder Program
- Students feed from Metcalfe PS, Queen Elizabeth PS, Sawmill Creek ES, York Street PS
- Preliminary October 31 2022 enrolment is 1088
- School capacity is 1608; Utilization is 68%
- There are currently 0 portables on site
- Forecast for enrolment at the school is anticipated to be stable within the next 10 years

Kars on the Rideau Public School

- JK to Grade 8 EFI, 7-8 ENG, 4-8 MFI
- Students feed in from Manotick PS, Steve MacLean PS, and North Gower/Marlborough PS
- Students feed into John McCrae SS, Merivale HS, Osgoode Township HS, South Carleton HS
- Preliminary October 31 2022 enrolment is 648
- School capacity is 746; Utilization is 87%
- There are currently 2 portables on site required for instructional use
- Forecast is for enrolment at the school is a slight decline and then an increase backup to its current range in 10 years

Merivale High School

- Grades 7 to 12 English and Immersion and an International Baccalaureate (IB) Program
- One specialist High Skills Major Program: Communication and Design
- New Autism Spectrum Disorder (ASDP) Secondary Non Credit program
- Students feed from Kars on the Rideau PS, Steve MacLean PS, Sir Winston Churchill PS, Carleton Heights PS
- Preliminary October 31 2022 enrolment is 1357
- School capacity is 1384; Utilization is 98%
- There are currently 12 portables on site for instructional use
- Forecast for enrolment at the school is anticipated to climb within the next 10 years

Osgoode Township High School

- Grades 9 to 12 English and Immersion

- Three specialist High Skills Major programs: Justice, Community Safety: Emergency Services, Transportation: Vehicle Component and Design, and 3D Game Design and Virtual Production
- Dual Support program
- Students feed from Castor Valley ES, Metcalfe PS, Vimy Ridge PS, Sawmill Creek ES, and Kars on the Rideau PS
- Preliminary October 31 2022 enrolment is 481
- School capacity is 651; Utilization is 74%
- There are currently 2 portables on site for instructional use
- Forecast for enrolment at the school is anticipated to be stable within the next 10 years

Ridgemont High School

- Grades 9-12 English and Immersion
- English Literacy Centre
- Development Disabilities Program
- One Specialist High Skills Major Program: Design and Creation with Sustainability in Mind – Arts and Culture Sector
- Students feed from Alta Vista PS, Blossom Park PS, Vimy Ridge PS, Featherston Drive PS, Hawthorne PS, Roberta Bondar PS, Steve MacLean PS, Fielding Drive PS, Sawmill Creek ES, and Vincent Massey PS
- Preliminary October 31 2022 enrolment is 810
- School capacity is 969; Utilization is 84%
- There is currently 1 portable on site for instructional use
- Forecast for enrolment at the school is anticipated to slightly decrease within the next 10 years

South Carleton High School

- Grades 9-12 English and Immersion
- Dual Support Program
- Autism Spectrum Disorder Program
- Five Specialist High Skills Major Programs: Construction Projects/Housebuilding, Health and Wellness: Community Support Services, Information and Communications Technology: Digital Photography, Media and Imaging, Manufacturing: Fabrication, and Transportation: Automotive Repair and Service Specialist
- Students feed in from A. Lorne Cassidy ES, Goulbourn MS, Kars on the Rideau PS, Cedarview MS, and Steve MacLean PS
- Preliminary October 31, 2022 enrolment is 1451
- School capacity is 1344; Utilization is 108%
- There is currently 1 portable on site required for instructional use

- The overall school enrolment is expected to increase over the next 10 years due to new residential development in the Stittsville and Richmond Village areas, but will be offset by the opening of New Stittsville secondary school in September of 2025.

Steve MacLean Public School

- JK to Grade 8 ENG, EFI
- Students feed into Merivale HS, Ridgemont HS, and South Carleton HS
- Preliminary October 31 2022 enrolment is 806
- School capacity is 789; Utilization is 102%
- There are currently 2 portables on site required for instructional use
- Forecast for enrolment at the school is a slight decline and then an increase backup to its current range in 10 years

Steve MacLean Public School History and Status Quo Projections

Year	Prog	Yr 1	Yr 2	1	2	3	4	5	6	7	8	SE	DD	Total	UF%
2017	KGTN	72	80											152	123.8%
	ENG			6	8	12	17	19	29	29	30			150	
	EFI			81	85	97	86	87	82	75	82			675	
	TOTAL	72	80	87	93	109	103	106	111	104	112			977	

Year	Prog	Yr 1	Yr 2	1	2	3	4	5	6	7	8	SE	DD	Total	UF%
2018	KGTN	93	72											165	123.3%
	ENG			6	9	12	17	21	21	33	28			147	
	EFI			83	80	84	95	84	85	77	73			661	
	TOTAL	93	72	89	89	96	112	105	106	110	101			973	

Year	Prog	Yr 1	Yr 2	1	2	3	4	5	6	7	8	SE	DD	Total	UF%
2019	KGTN	83	101											184	121.4%
	ENG			8	15	14	15	19	30	23	32			156	
	EFI			64	74	77	78	93	81	79	72			618	
	TOTAL	83	101	72	89	91	93	112	111	102	104	0	0	958	

Year	Prog	Yr 1	Yr 2	1	2	3	4	5	6	7	8	SE	DD	Total	UF%
2020	KGTN	64	84											148	116.7%
	ENG			9	12	15	23	20	19	29	24	8		159	
	EFI			88	62	71	74	75	93	81	70			614	
	TOTAL	64	84	97	74	86	97	95	112	110	94	8		921	

Year	Prog	Yr 1	Yr 2	1	2	3	4	5	6	7	8	SE	DD	Total	UF%
2021	KGTN	64	66											130	111.3%
	ENG			10	11	15	17	25	25	26	31	7		167	
	EFI			72	86	55	69	69	72	80	78			581	
	TOTAL	64	66	82	97	70	86	94	97	106	109	7		878	

Year	Prog	Yr 1	Yr 2	1	2	3	4	5	6	7	8	SE	DD	Total	UF%
2022	KGTN	51	72											123	103.3%
	ENG			5	16	15	17	26	28	23	27	3		160	
	EFI			57	69	80	51	63	70	64	78			532	
	TOTAL	51	72	62	85	95	68	89	98	98	87	105	3	815	

Year	Prog	Yr 1	Yr 2	1	2	3	4	5	6	7	8	SE	DD	Total	UF%
2023	KGTN	47	56											103	95.4%
	ENG			7	7	20	18	21	30	29	24	3		159	
	EFI			59	55	65	76	48	62	64	62			491	
	TOTAL	47	56	66	62	85	94	69	92	93	86	3		753	

Year	Prog	Yr 1	Yr 2	1	2	3	4	5	6	7	8	SE	DD	Total	UF%
2024	KGTN	52	52											104	91.9%
	ENG			6	10	9	25	23	24	31	31	3		162	
	EFI			50	58	52	62	71	47	57	62			459	
	TOTAL	52	52	56	68	61	87	94	71	88	93	3		725	

Year	Prog	Yr 1	Yr 2	1	2	3	4	5	6	7	8	SE	DD	Total	UF%
2025	KGTN	53	57											110	87.7%
	ENG			5	8	13	11	31	26	26	33	3		156	
	EFI			47	49	54	49	58	71	44	54			426	
	TOTAL	53	57	52	57	67	60	89	97	97	70	87	3	692	

Year	Prog	Yr 1	Yr 2	1	2	3	4	5	6	7	8	SE	DD	Total	UF%
2026	KGTN	53	58											111	83.3%
	ENG			6	7	10	15	13	35	27	27	3		143	
	EFI			51	45	46	51	46	57	65	42			403	
	TOTAL	53	58	57	52	56	66	59	92	92	69	3		657	

Year	Prog	Yr 1	Yr 2	1	2	3	4	5	6	7	8	SE	DD	Total	UF%
2027	KGTN	53	53											106	81.4%
	ENG			6	8	9	12	19	15	37	29	3		138	
	EFI			52	49	43	44	48	46	53	63			398	
	TOTAL	53	53	58	57	52	56	67	61	90	92	3		642	

Steve MacLean Public School Projections With Proposed Boundary

Year	Prog	Yr 1	Yr 2	1	2	3	4	5	6	7	8	SE	DD	Total	UF%	Difference:
2025	KGTN	74	85											159	96.7%	9.0%
	ENG			17	18	23	19	41	38	0	0	3		160		
	EFI			70	68	73	64	77	93	0	0			445		
	TOTAL	74	85	87	86	96	83	118	130	0	0	3		763		

Year	Prog	Yr 1	Yr 2	1	2	3	4	5	6	7	8	SE	DD	Total	UF%	Difference:
2026	KGTN	74	86											160	97.4%	14.2%
	ENG			18	21	23	27	23	52	0	0	3		167		
	EFI			74	71	70	74	64	88	0	0			442		
	TOTAL	74	86	92	92	93	102	87	140	0	0	3		769		

Year	Prog	Yr 1	Yr 2	1	2	3	4	5	6	7	8	SE	DD	Total	UF%	Difference:
2027	KGTN	74	81											155	97.5%	16.1%
	ENG			18	22	27	28	34	31	0	0	3		163		
	EFI			75	75	76	73	76	76	0	0			451		
	TOTAL	74	81	93	97	103	101	110	106	0	0	3		769		

Vimy Ridge Public School History and Status Quo Projections

Year	Prog	Yr 1	Yr 2	1	2	3	4	5	6	7	8	SE	DD	Total	UF%
2017	KGTN	75	64											139	86.4%
	ENG			24	23	24	35	29	23	22	20	15		215	
	EFI			45	49	24	37	26	23	18	6			228	
	TOTAL	75	64	69	72	48	72	55	46	40	26	15		582	

Year	Prog	Yr 1	Yr 2	1	2	3	4	5	6	7	8	SE	DD	Total	UF%
2018	KGTN	99	85											184	103.7%
	ENG			16	32	26	27	33	37	30	28	15		244	
	EFI			52	42	49	27	37	25	20	19			271	
	TOTAL	99	85	68	74	75	54	70	62	50	47	15		699	

Year	Prog	Yr 1	Yr 2	1	2	3	4	5	6	7	8	SE	DD	Total	UF%
2019	KGTN	105	97											202	117.4%
	ENG			16	26	38	36	32	33	35	33	20		269	
	EFI			69	51	41	43	26	41	28	21			320	
	TOTAL	105	97	85	77	79	79	58	74	63	54	20		791	

Year	Prog	Yr 1	Yr 2	1	2	3	4	5	6	7	8	SE	DD	Total	UF%
2020	KGTN	101	112											213	134.1%
	ENG			19	32	42	40	46	37	37	48	23		324	
	EFI			90	59	49	45	39	26	32	27			367	
	TOTAL	101	112	109	91	91	85	85	63	69	75	23		904	

Year	Prog	Yr 1	Yr 2	1	2	3	4	5	6	7	8	SE	DD	Total	UF%
2021	KGTN	112	135											247	160.1%
	ENG			34	44	46	55	51	64	41	38	22		395	
	EFI			94	89	64	50	43	40	26	31			437	
	TOTAL	112	135	128	133	110	105	94	104	67	69	22		1079	

Year	Prog	Yr 1	Yr 2	1	2	3	4	5	6	7	8	SE	DD	Total	UF%
2022	KGTN	135	125											260	170.8%
	ENG			45	50	53	54	60	61	42	48	17		430	
	EFI			104	78	75	62	51	42	25	24			461	
	TOTAL	135	125	149	128	128	116	111	103	67	72	17		1151	

Year	Prog	Yr 1	Yr 2	1	2	3	4	5	6	7	8	SE	DD	Total	UF%
2023	KGTN	126	142											268	178.5%
	ENG			37	55	54	55	55	63	43	46	17		425	
	EFI			102	93	72	75	61	51	32	24			510	
	TOTAL	126	142	139	148	126	130	116	114	75	70	17		1203	

Year	Prog	Yr 1	Yr 2	1	2	3	4	5	6	7	8	SE	DD	Total	UF%
2024	KGTN	130	132											262	187.5%
	ENG			42	46	68	56	57	58	44	47	17		435	
	EFI			115	91	86	72	74	61	38	30			567	
	TOTAL	130	132	157	137	154	128	131	119	82	77	17		1264	

Year	Prog	Yr 1	Yr 2	1	2	3	4	5	6	7	8	SE	DD	Total	UF%
2025	KGTN	120	129											249	192.4%
	ENG			39	53	56	71	58	59	40	49	17		442	
	EFI			107	103	84	86	70	74	46	36			606	
	TOTAL	120	129	146	156	140	157	128	133	86	85	17		1297	

Year	Prog	Yr 1	Yr 2	1	2	3	4	5	6	7	8	SE	DD	Total	UF%
2026	KGTN	120	119											239	195.0%
	ENG			38	48	64	58	74	61	41	44	17		445	
	EFI			105	95	94	84	84	70	55	43			630	
	TOTAL	120	119	143	143	158	142	158	131	96	87	17		1314	

Year	Prog	Yr 1	Yr 2	1	2	3	4	5	6	7	8	SE	DD	Total	UF%
2027	KGTN	121	119											240	198.2%
	ENG			35	47	59	68	60	79	43	45	17		453	
	EFI			97	93	88	94	82	84	53	52			643	
	TOTAL	121	119	132	140	147	162	142	163	96	97	17		1336	

Vimy Ridge Public School Projections With Proposed Boundary

Year	Prog	Yr 1	Yr 2	1	2	3	4	5	6	7	8	SE	DD	Total	UF%	Difference:
2025	KGTN	120	129											249	167.1%	-25.4%
	ENG			39	53	56	71	58	59	0	0	17		353		
	EFI			107	103	84	86	70	74	0	0			524		
	TOTAL	120	129	146	156	140	157	128	133	0	0	17		1126		

Year	Prog	Yr 1	Yr 2	1	2	3	4	5	6	7	8	SE	DD	Total	UF%	Difference:
2026	KGTN	120	119											239	167.8%	-27.2%
	ENG			38	48	64	58	74	61	0	0	17		360		
	EFI			105	95	94	84	84	70	0	0			532		
	TOTAL	120	119	143	143	158	142	158	131	0	0	17		1131		

Year	Prog	Yr 1	Yr 2	1	2	3	4	5	6	7	8	SE	DD	Total	UF%	Difference:
2027	KGTN	121	119											240	169.6%	-28.6%
	ENG			35	47	59	68	60	79	0	0	17		365		
	EFI			97	93	88	94	82	84	0	0			538		
	TOTAL	121	119	132	140	147	162	142	163	0	0	17		1143		

Farley Mowat Public School History and Status Quo Projections

Year	Prog	Yr 1	Yr 2	1	2	3	4	5	6	7	8	SE	DD	Total	UF%
2017	KGTN	54	73											127	101.1%
	ENG			22	17	25	23	47	43					177	
	EFI			64	36	48	36	33	39					256	
	TOTAL	54	73	86	53	73	59	80	82					560	

Year	Prog	Yr 1	Yr 2	1	2	3	4	5	6	7	8	SE	DD	Total	UF%
2018	KGTN	51	61											112	102.0%
	ENG			17	34	26	20	32	48					177	
	EFI			57	63	37	47	38	34					276	
	TOTAL	51	61	74	97	63	67	70	82					565	

Year	Prog	Yr 1	Yr 2	1	2	3	4	5	6	7	8	SE	DD	Total	UF%
2019	KGTN	67	62											129	102.9%
	ENG			14	30	40	22	27	37					170	
	EFI			45	48	60	34	43	41					271	
	TOTAL	67	62	59	78	100	56	70	78					570	

Year	Prog	Yr 1	Yr 2	1	2	3	4	5	6	7	8	SE	DD	Total	UF%
2020	KGTN	53	72											125	101.4%
	ENG			15	19	33	38	30	37					172	
	EFI			50	43	42	55	31	44					265	
	TOTAL	53	72	65	62	75	93	61	81					562	

Year	Prog	Yr 1	Yr 2	1	2	3	4	5	6	7	8	SE	DD	Total	UF%
2021	KGTN	69	67											136	102.7%
	ENG			24	21	30	39	36	30					180	
	EFI			48	47	37	36	53	32					253	
	TOTAL	69	67	72	68	67	75	89	62					569	

Year	Prog	Yr 1	Yr 2	1	2	3	4	5	6	7	8	SE	DD	Total	UF%
2022	KGTN	61	85											146	115.0%
	ENG			33	35	40	35	46	53					242	
	EFI			44	41	42	33	39	50					249	
	TOTAL	61	85	77	76	82	68	85	103					637	

Year	Prog	Yr 1	Yr 2	1	2	3	4	5	6	7	8	SE	DD	Total	UF%
2023	KGTN	70	74											144	120.2%
	ENG			35	47	57	45	39	58					281	
	EFI			56	40	36	37	33	39					241	
	TOTAL	70	74	91	87	93	82	72	97					666	

Year	Prog	Yr 1	Yr 2	1	2	3	4	5	6	7	8	SE	DD	Total	UF%
2024	KGTN	75	86											161	130.0%
	ENG			31	50	76	65	51	49					322	
	EFI			49	51	35	32	37	33					237	
	TOTAL	75	86	80	101	111	97	88	82					720	

Year	Prog	Yr 1	Yr 2	1	2	3	4	5	6	7	8	SE	DD	Total	UF%
2025	KGTN	71	91											162	143.0%
	ENG			35	44	81	87	72	64					383	
	EFI			57	45	45	31	32	37					247	
	TOTAL	71	91	92	89	126	118	104	101					792	

Year	Prog	Yr 1	Yr 2	1	2	3	4	5	6	7	8	SE	DD	Total	UF%
2026	KGTN	70	87											157	153.1%
	ENG			38	50	71	92	97	91					439	
	EFI			60	51	39	39	31	32					252	
	TOTAL	70	87	98	101	110	131	128	123					848	

Year	Prog	Yr 1	Yr 2	1	2	3	4	5	6	7	8	SE	DD	Total	UF%
2027	KGTN	70	85											155	161.4%
	ENG			36	53	82	81	103	122					477	
	EFI			57	55	45	34	40	31					262	
	TOTAL	70	85	93	108	127	115	143	153					894	

Farley Mowat Public School Projections With Proposed Boundary

Year	Prog	Yr 1	Yr 2	1	2	3	4	5	6	7	8	SE	DD	Total	UF%	Difference:
2025	KGTN	50	63											113	101.8%	-41.2%
	ENG			17	29	66	75	57	47					293		
	EFI			39	30	30	19	17	20					157		
	TOTAL	50	63	57	60	97	95	75	68					564		

Year	Prog	Yr 1	Yr 2	1	2	3	4	5	6	7	8	SE	DD	Total	UF%	Difference:
2026	KGTN	49	59											108	103.8%	-49.2%
	ENG			20	30	52	74	83	67					327		
	EFI			42	31	20	21	17	8					140		
	TOTAL	49	59	63	61	73	95	100	75					575		

Year	Prog	Yr 1	Yr 2	1	2	3	4	5	6	7	8	SE	DD	Total	UF%	Difference:
2027	KGTN	49	57											106	105.5%	-55.8%
	ENG			18	33	56	58	82	99					347		
	EFI			39	35	19	11	19	8					132		
	TOTAL	49	57	58	68	76	70	100	108					585		

Kars on the Rideau Public School History and Status Quo Projections

Year	Prog	Yr 1	Yr 2	1	2	3	4	5	6	7	8	SE	DD	Total	UF%
2017	KGTN	33	48											81	89.5%
	ENG								43	38	45			126	
	EFI			45	50	49	54	42	66	45	57			408	
	MFI						7	12	10	12	12			53	
	TOTAL	33	48	45	50	49	61	54	119	95	114	0	0	668	

Year	Prog	Yr 1	Yr 2	1	2	3	4	5	6	7	8	SE	DD	Total	UF%
2018	KGTN	34	37											71	88.7%
	ENG								32	50	41			123	
	EFI			50	45	49	53	51	62	66	42			418	
	MFI						11	8	13	8	10			50	
	TOTAL	34	37	50	45	49	64	59	107	124	93	0	0	662	

Year	Prog	Yr 1	Yr 2	1	2	3	4	5	6	7	8	SE	DD	Total	UF%
2019	KGTN	41	33											74	92.0%
	ENG								36	38	49			123	
	EFI			41	49	47	49	52	73	65	64			440	
	MFI						8	13	6	13	9			49	
	TOTAL	41	33	41	49	47	57	65	115	116	122	0	0	686	

Year	Prog	Yr 1	Yr 2	1	2	3	4	5	6	7	8	SE	DD	Total	UF%
2020	KGTN	35	45											80	91.6%
	ENG								37	48	38			123	
	EFI			36	43	52	47	50	71	78	63			440	
	MFI						4	8	10	5	13			40	
	TOTAL	35	45	36	43	52	51	58	118	131	114	0	0	683	

Year	Prog	Yr 1	Yr 2	1	2	3	4	5	6	7	8	SE	DD	Total	UF%
2021	KGTN	39	39											78	91.0%
	ENG								42	41	55			138	
	EFI			40	39	38	51	46	72	73	70			429	
	MFI						3	6	10	9	6			34	
	TOTAL	39	39	40	39	38	54	52	124	123	131	0	0	679	

Year	Prog	Yr 1	Yr 2	1	2	3	4	5	6	7	8	SE	DD	Total	UF%
2022	KGTN	37	42											79	87.1%
	ENG								31	49	44			124	
	EFI			42	40	36	36	52	65	72	72			415	
	MFI						6	3	5	10	8			32	
	TOTAL	37	42	42	40	36	42	55	101	131	124	0	0	650	

Year	Prog	Yr 1	Yr 2	1	2	3	4	5	6	7	8	SE	DD	Total	UF%
2023	KGTN	37	41											78	85.9%
	ENG								39	35	54			128	
	EFI			41	44	36	35	36	76	66	68			402	
	MFI						7	8	3	5	10			33	
	TOTAL	37	41	41	44	36	42	44	118	106	132	0	0	641	

Year	Prog	Yr 1	Yr 2	1	2	3	4	5	6	7	8	SE	DD	Total	UF%
2024	KGTN	39	41											80	83.2%
	ENG								34	45	39			118	
	EFI			40	43	40	35	35	55	77	62			387	
	MFI						12	8	8	3	5			36	
	TOTAL	39	41	40	43	40	47	43	97	125	106	0	0	621	

Year	Prog	Yr 1	Yr 2	1	2	3	4	5	6	7	8	SE	DD	Total	UF%
2025	KGTN	39	43											82	88.2%
	ENG								69	38	49			156	
	EFI			40	42	39	38	35	52	56	73			375	
	MFI						12	14	9	7	3			45	
	TOTAL	39	43	40	42	39	50	49	130	101	125	0	0	658	

Year	Prog	Yr 1	Yr 2	1	2	3	4	5	6	7	8	SE	DD	Total	UF%
2026	KGTN	39	43											82	94.6%
	ENG								85	79	43			207	
	EFI			42	42	37	37	38	57	52	53			358	
	MFI						13	15	15	8	8			59	
	TOTAL	39	43	42	42	37	50	53	157	139	104	0	0	706	

Year	Prog	Yr 1	Yr 2	1	2	3	4	5	6	7	8	SE	DD	Total	UF%
2027	KGTN	39	43											82	101.1%
	ENG								61	96	88			245	
	EFI			42	44	38	36	37	55	58	49			359	
							14	16	15	14	9			68	
	TOTAL	39	43	42	44	38	50	53	131	168	146	0	0	754	

Kars on the Rideau Public School Projections With Proposed Boundary

Year	Prog	Yr 1	Yr 2	1	2	3	4	5	6	7	8	SE	DD	Total	UF%	Difference
2025	KGTN	39	43											82	86.7%	-1.5%
	ENG								69	36	47			152		
	EFI			40	42	39	38	35	52	54	71			371		
	MFI						12	14	9	6	2			43		
	TOTAL	39	43	40	42	39	50	49	130	96	119	0	0	647		

Year	Prog	Yr 1	Yr 2	1	2	3	4	5	6	7	8	SE	DD	Total	UF%	Difference
2026	KGTN	39	43											82	93.1%	-1.5%
	ENG								85	77	41			203		
	EFI			42	42	37	37	38	57	50	51			354		
	MFI						13	15	15	7	7			57		
	TOTAL	39	43	42	42	37	50	53	157	134	98	0	0	695		

Year	Prog	Yr 1	Yr 2	1	2	3	4	5	6	7	8	SE	DD	Total	UF%	Difference
2027	KGTN	39	43											82	99.6%	-1.5%
	ENG								61	94	86			241		
	EFI			42	44	38	36	37	55	56	47			355		
							14	16	15	13	8			66		
	TOTAL	39	43	42	44	38	50	53	131	163	140	0	0	743		

Blossom Park Public School History and Status Quo Projections

Year	Prog	Yr 1	Yr 2	1	2	3	4	5	6	7	8	SE	DD	Total	UF%
2017	KGTN	27	20											47	85.5%
	ENG			23	32	37	20	16	19	24	24	18		213	
	MFI						28	35	15	17	12			107	
	TOTAL	27	20	23	32	37	48	51	34	41	36	18	0	367	

Year	Prog	Yr 1	Yr 2	1	2	3	4	5	6	7	8	SE	DD	Total	UF%
2018	KGTN	30	31											61	90.2%
	ENG			24	25	31	20	25	13	20	20	23		201	
	MFI						30	27	30	19	19			125	
	TOTAL	30	31	24	25	31	50	52	43	39	39	23	0	387	

Year	Prog	Yr 1	Yr 2	1	2	3	4	5	6	7	8	SE	DD	Total	UF%
2019	KGTN	14	30											44	88.1%
	ENG			32	30	30	18	22	26	13	16	24		211	
	MFI						23	31	25	26	18			123	
	TOTAL	14	30	32	30	30	41	53	51	39	34	24	0	378	

Year	Prog	Yr 1	Yr 2	1	2	3	4	5	6	7	8	SE	DD	Total	UF%
2020	KGTN	20	15											35	87.2%
	ENG			30	31	29	17	28	22	25	18	24		224	
	MFI						20	24	28	23	20			115	
	TOTAL	20	15	30	31	29	37	52	50	48	38	24	0	374	

Year	Prog	Yr 1	Yr 2	1	2	3	4	5	6	7	8	SE	DD	Total	UF%
2021	KGTN	22	25											47	90.9%
	ENG			18	34	39	16	23	30	29	27	22		238	
	MFI						17	19	21	25	23			105	
	TOTAL	22	25	18	34	39	33	42	51	54	50	22	0	390	

Year	Prog	Yr 1	Yr 2	1	2	3	4	5	6	7	8	SE	DD	Total	UF%
2022	KGTN	16	29											45	83.4%
	ENG			30	21	30	33	16	22	31	28	22		233	
	MFI						13	17	15	15	20			80	
	TOTAL	16	29	30	21	30	46	33	37	46	48	22	0	358	

Year	Prog	Yr 1	Yr 2	1	2	3	4	5	6	7	8	SE	DD	Total	UF%
2023	KGTN	18	20											38	83.2%
	ENG			33	34	22	22	40	16	24	33	22		246	
	MFI						19	13	14	13	14			73	
	TOTAL	18	20	33	34	22	41	53	30	37	47	22	0	357	

Year	Prog	Yr 1	Yr 2	1	2	3	4	5	6	7	8	SE	DD	Total	UF%
2024	KGTN	19	18											37	81.1%
	ENG			23	37	36	16	26	40	18	25	22		243	
	MFI						16	18	11	12	11			68	
	TOTAL	19	18	23	37	36	32	44	51	30	36	22	0	348	

Year	Prog	Yr 1	Yr 2	1	2	3	4	5	6	7	8	SE	DD	Total	UF%
2025	KGTN	19	19											38	80.4%
	ENG			20	26	39	26	19	26	44	19	22		241	
	MFI						21	15	15	8	7			66	
	TOTAL	19	19	20	26	39	47	34	41	41	52	22	0	345	

Year	Prog	Yr 1	Yr 2	1	2	3	4	5	6	7	8	SE	DD	Total	UF%
2026	KGTN	20	19											39	82.3%
	ENG			21	23	28	28	31	19	29	46	22		247	
	MFI						16	20	13	11	7			67	
	TOTAL	20	19	21	23	28	44	51	32	40	53	22	0	353	

Year	Prog	Yr 1	Yr 2	1	2	3	4	5	6	7	8	SE	DD	Total	UF%
2027	KGTN	20	20											40	78.3%
	ENG			22	24	24	20	34	31	21	30	22		228	
	MFI						17	15	17	9	10			68	
	TOTAL	20	20	22	24	24	37	49	48	30	40	22	0	336	

Blossom Park Public School Projections With Proposed Boundary

Year	Prog	Yr 1	Yr 2	1	2	3	4	5	6	7	8	SE	DD	Total	UF%	Difference
2025	KGTN	19	19											38	77.5%	-2.9%
	ENG			20	26	39	26	19	26	44	19	22		241		
	MFI						21	15	15	2	1			54		
	TOTAL	19	19	20	26	39	47	34	41	46	20	22	0	333		

Year	Prog	Yr 1	Yr 2	1	2	3	4	5	6	7	8	SE	DD	Total	UF%	Difference
2026	KGTN	20	19											39	79.4%	-2.9%
	ENG			21	23	28	28	31	19	29	46	22		247		
	MFI						16	20	13	5	1			55		
	TOTAL	20	19	21	23	28	44	51	32	34	47	22	0	341		

Year	Prog	Yr 1	Yr 2	1	2	3	4	5	6	7	8	SE	DD	Total	UF%	Difference
2027	KGTN	20	20											40	75.4%	-2.9%
	ENG			22	24	24	20	34	31	21	30	22		228		
	MFI						17	15	17	3	4			56		
	TOTAL	20	20	22	24	24	37	49	48	24	34	22	0	324		

Merivale High School History and Status Quo Projections

Year	Prog	7	8	9	10	11	12	12/OAC	21 & Older	Other	TOTAL	UF %
2017	Total	128	161	213	137	139	152				930	67.2%

Year	Prog	7	8	9	10	11	12	12/OAC	21 & Older	Other	TOTAL	UF %
2018	Total	140	136	238	220	148	147				1029	74.3%

Year	Prog	7	8	9	10	11	12	12/OAC	21 & Older	Other	TOTAL	UF %
2019	Total	150	150	347	248	201	161				1257	90.8%

Year	Prog	7	8	9	10	11	12	12/OAC	21 & Older	Other	TOTAL	UF %
2020	Total	149	154	338	331	257	209				1438	103.9%

Year	Prog	7	8	9	10	11	12	12/OAC	21 & Older	Other	TOTAL	UF %
2021	Total	153	148	373	342	309	249				1574	113.7%

Year	Prog	7	8	9	10	11	12	12/OAC	21 & Older	Other	TOTAL	UF %
2022	Total	180	162	378	369	333	309			5	1736	125.4%

Year	Prog	7	8	9	10	11	12	12/OAC	21 & Older	Other	TOTAL	UF %
2023	Total	169	185	369	378	367	337			5	1810	130.8%

Year	Prog	7	8	9	10	11	12	12/OAC	21 & Older	Other	TOTAL	UF %
2024	Total	178	174	386	369	375	371			5	1858	134.2%

Year	Prog	7	8	9	10	11	12	12/OAC	21 & Older	Other	TOTAL	UF %
2025	Total	192	181	378	386	366	380			5	1888	136.4%

Year	Prog	7	8	9	10	11	12	12/OAC	21 & Older	Other	TOTAL	UF %
2026	Total	190	200	381	378	383	370			5	1907	137.8%

Year	Prog	7	8	9	10	11	12	12/OAC	21 & Older	Other	TOTAL	UF %
2027	Total	193	198	394	381	376	388			5	1935	139.8%

Merivale High School Projections With Proposed Boundary

Year	Prog	7	8	9	10	11	12	12/OAC	21 & Older	Other	TOTAL	UF %	Difference
2025	Total	192	181	293	305	292	315			5	1583	114.38%	-22.0%

Year	Prog	7	8	9	10	11	12	12/OAC	21 & Older	Other	TOTAL	UF %	Difference
2026	Total	190	200	291	292	304	297			5	1578	114.05%	-23.7%

Year	Prog	7	8	9	10	11	12	12/OAC	21 & Older	Other	TOTAL	UF %	Difference
2027	Total	193	198	394	299	290	292			5	1671	120.73%	-19.0%

South Carleton High School History and Status Quo Projections

Year	Prog	9	10	11	12	12/OAC	21 & Older	Other	TOTAL	UF %
2017	Total	243	261	270	259				1033	76.9%

Year	Prog	9	10	11	12	12/OAC	21 & Older	Other	TOTAL	UF %
2018	Total	323	260	259	282				1124	83.6%

Year	Prog	9	10	11	12	12/OAC	21 & Older	Other	TOTAL	UF %
2019	Total	277	328	265	267			5	1142	85.0%

Year	Prog	9	10	11	12	12/OAC	21 & Older	Other	TOTAL	UF %
2020	Total	362	292	335	279			7	1275	94.9%

Year	Prog	9	10	11	12	12/OAC	21 & Older	Other	TOTAL	UF %
2021	Total	363	372	300	330			8	1373	102.2%

Year	Prog	9	10	11	12	12/OAC	21 & Older	Other	TOTAL	UF %
2022	Total	399	390	379	319			4	1491	110.9%

Year	Prog	9	10	11	12	12/OAC	21 & Older	Other	TOTAL	UF %
2023	Total	329	418	396	389			4	1536	114.3%

Year	Prog	9	10	11	12	12/OAC	21 & Older	Other	TOTAL	UF %
2024	Total	329	345	425	407			4	1510	112.4%

Year	Prog	9	10	11	12	12/OAC	21 & Older	Other	TOTAL	UF %
2025	Total	329	345	351	436			4	1465	109.0%

Year	Prog	9	10	11	12	12/OAC	21 & Older	Other	TOTAL	UF %
2026	Total	329	345	351	360			4	1389	103.3%

Year	Prog	9	10	11	12	12/OAC	21 & Older	Other	TOTAL	UF %
2027	Total	329	345	351	360			4	1389	103.3%

South Carleton High School Projections With Proposed Boundary

Year	Prog	9	10	11	12	12/OAC	21 & Older	Other	TOTAL	UF %	Difference
2025	Total	310	326	335	418			25	1413	105.2%	-3.8%

Year	Prog	9	10	11	12	12/OAC	21 & Older	Other	TOTAL	UF %	Difference
2026	Total	308	324	332	335			25	1324	98.5%	-4.8%

Year	Prog	9	10	11	12	12/OAC	21 & Older	Other	TOTAL	UF %	Difference
2027	Total	306	322	330	331			25	1314	97.8%	-5.6%

Ridgemont High School History and Status Quo Projections

Year	Prog	9	10	11	12	12/OAC	21 & Older	Other	TOTAL	UF %
2017	Total	140	164	190	224			19	737	76.1%

Year	Prog	9	10	11	12	12/OAC	21 & Older	Other	TOTAL	UF %
2018	Total	172	147	172	267		2	17	777	80.2%

Year	Prog	9	10	11	12	12/OAC	21 & Older	Other	TOTAL	UF %
2019	Total	171	187	165	270		3	18	814	84.0%

Year	Prog	9	10	11	12	12/OAC	21 & Older	Other	TOTAL	UF %
2020	Total	169	182	207	274				832	85.9%

Year	Prog	9	10	11	12	12/OAC	21 & Older	Other	TOTAL	UF %
2021	Total	132	171	184	297			16	800	82.6%

Year	Prog	9	10	11	12	12/OAC	21 & Older	Other	TOTAL	UF %
2022	Total	195	157	202	297			14	865	89.3%

Year	Prog	9	10	11	12	12/OAC	21 & Older	Other	TOTAL	UF %
2023	Total	172	206	167	308			14	867	89.5%

Year	Prog	9	10	11	12	12/OAC	21 & Older	Other	TOTAL	UF %
2024	Total	172	182	220	255			14	843	87.0%

Year	Prog	9	10	11	12	12/OAC	21 & Older	Other	TOTAL	UF %
2025	Total	152	182	194	336			14	878	90.6%

Year	Prog	9	10	11	12	12/OAC	21 & Older	Other	TOTAL	UF %
2026	Total	151	161	194	296			14	816	84.2%

Year	Prog	9	10	11	12	12/OAC	21 & Older	Other	TOTAL	UF %
2027	Total	163	160	171	296			14	804	83.0%

Ridgemont High School Projections With Proposed Boundary

Year	Prog	9	10	11	12	12/OAC	21 & Older	Other	TOTAL	UF %	Difference
2025	Total	138	167	177	308			25	815	84.07%	-6.5%

Year	Prog	9	10	11	12	12/OAC	21 & Older	Other	TOTAL	UF %	Difference
2026	Total	135	144	173	264			25	741	76.46%	-7.7%

Year	Prog	9	10	11	12	12/OAC	21 & Older	Other	TOTAL	UF %	Difference
2027	Total	145	140	147	258			25	715	73.74%	-9.2%

Osgoode Township High School History and Status Quo Projections

Year	Prog	9	10	11	12	12/OAC	21 & Older	Other	TOTAL	UF %
2017	Total	120	111	141	152				524	80.5%

Year	Prog	9	10	11	12	12/OAC	21 & Older	Other	TOTAL	UF %
2018	Total	109	120	110	147				486	74.7%

Year	Prog	9	10	11	12	12/OAC	21 & Older	Other	TOTAL	UF %
2019	Total	106	114	117	111				448	68.8%

Year	Prog	9	10	11	12	12/OAC	21 & Older	Other	TOTAL	UF %
2020	Total	113	114	111	120				458	70.4%

Year	Prog	9	10	11	12	12/OAC	21 & Older	Other	TOTAL	UF %
2021	Total	121	107	120	120			4	472	72.5%

Year	Prog	9	10	11	12	12/OAC	21 & Older	Other	TOTAL	UF %
2022	Total	129	121	110	126			2	488	75.0%

Year	Prog	9	10	11	12	12/OAC	21 & Older	Other	TOTAL	UF %
2023	Total	129	129	124	116			2	500	76.8%

Year	Prog	9	10	11	12	12/OAC	21 & Older	Other	TOTAL	UF %
2024	Total	139	129	132	130			2	532	81.7%

Year	Prog	9	10	11	12	12/OAC	21 & Older	Other	TOTAL	UF %
2025	Total	139	139	132	139			2	551	84.6%

Year	Prog	9	10	11	12	12/OAC	21 & Older	Other	TOTAL	UF %
2026	Total	128	139	142	139			2	550	84.5%

Year	Prog	9	10	11	12	12/OAC	21 & Older	Other	TOTAL	UF %
2027	Total	124	128	142	149			2	545	83.7%

Osgoode Township Highschool Projections With Proposed Boundary

Year	Prog	9	10	11	12	12/OAC	21 & Older	Other	TOTAL	UF %	Difference
2025	Total	137	135	127	136			2	537	82.5%	-2.1%

Year	Prog	9	10	11	12	12/OAC	21 & Older	Other	TOTAL	UF %	Difference
2026	Total	126	135	137	134			2	533	81.9%	-2.6%

Year	Prog	9	10	11	12	12/OAC	21 & Older	Other	TOTAL	UF %	Difference
2027	Total	123	124	137	144			2	529	81.3%	-2.4%

Gloucester High School History and Status Quo Projections

Year	Prog	9	10	11	12	12/OAC	21 & Older	Other	TOTAL	UF %
2017	Total	196	222	238	355			19	1030	64.1%

Year	Prog	9	10	11	12	12/OAC	21 & Older	Other	TOTAL	UF %
2018	Total	201	223	252	331			19	1026	63.8%

Year	Prog	9	10	11	12	12/OAC	21 & Older	Other	TOTAL	UF %
2019	Total	194	220	234	366			16	1030	64.1%

Year	Prog	9	10	11	12	12/OAC	21 & Older	Other	TOTAL	UF %
2020	Total	193	215	207	343			27	985	61.3%

Year	Prog	9	10	11	12	12/OAC	21 & Older	Other	TOTAL	UF %
2021	Total	192	197	219	334		10	25	977	60.8%

Year	Prog	9	10	11	12	12/OAC	21 & Older	Other	TOTAL	UF %
2022	Total	223	227	230	373		10	25	1088	67.7%

Year	Prog	9	10	11	12	12/OAC	21 & Older	Other	TOTAL	UF %
2023	Total	223	248	243	368			25	1106	68.8%

Year	Prog	9	10	11	12	12/OAC	21 & Older	Other	TOTAL	UF %
2024	Total	221	247	265	389			25	1147	71.3%

Year	Prog	9	10	11	12	12/OAC	21 & Older	Other	TOTAL	UF %
2025	Total	220	246	265	424			25	1179	73.3%

Year	Prog	9	10	11	12	12/OAC	21 & Older	Other	TOTAL	UF %
2026	Total	208	245	263	423			25	1164	72.4%

Year	Prog	9	10	11	12	12/OAC	21 & Older	Other	TOTAL	UF %
2027	Total	187	231	262	421			25	1125	70.0%

Gloucester Highschool Projections With Proposed Boundary

Year	Prog	9	10	11	12	12/OAC	21 & Older	Other	TOTAL	UF %	Difference
2025	Total	217	241	258	418			25	1159	72.1%	-1.3%

Year	Prog	9	10	11	12	12/OAC	21 & Older	Other	TOTAL	UF %	Difference
2026	Total	205	240	257	413			25	1139	70.9%	-1.5%

Year	Prog	9	10	11	12	12/OAC	21 & Older	Other	TOTAL	UF %	Difference
2027	Total	184	226	256	411			25	1101	68.5%	-1.5%

Brookfield High School History and Status Quo Projections

Year	Prog	9	10	11	12	12/OAC	21 & Older	Other	TOTAL	UF %
2017	Total	117	132	147	167			11	574	50.1%

Year	Prog	9	10	11	12	12/OAC	21 & Older	Other	TOTAL	UF %
2018	Total	116	126	138	190			11	581	50.7%

Year	Prog	9	10	11	12	12/OAC	21 & Older	Other	TOTAL	UF %
2019	Total	96	135	148	181			19	579	50.5%

Year	Prog	9	10	11	12	12/OAC	21 & Older	Other	TOTAL	UF %
2020	Total	93	98	117	164			18	490	42.8%

Year	Prog	9	10	11	12	12/OAC	21 & Older	Other	TOTAL	UF %
2021	Total	112	100	105	157			19	493	43.0%

Year	Prog	9	10	11	12	12/OAC	21 & Older	Other	TOTAL	UF %
2022	Total	138	138	122	155			25	578	50.4%

Year	Prog	9	10	11	12	12/OAC	21 & Older	Other	TOTAL	UF %
2023	Total	109	156	148	162			25	600	52.4%

Year	Prog	9	10	11	12	12/OAC	21 & Older	Other	TOTAL	UF %
2024	Total	111	123	167	196			25	622	54.3%

Year	Prog	9	10	11	12	12/OAC	21 & Older	Other	TOTAL	UF %
2025	Total	122	125	132	221			25	625	54.5%

Year	Prog	9	10	11	12	12/OAC	21 & Older	Other	TOTAL	UF %
2026	Total	125	138	164	175			25	627	54.7%

Year	Prog	9	10	11	12	12/OAC	21 & Older	Other	TOTAL	UF %
2027	Total	140	141	148	178			25	632	55.1%

Brookfield High School Projections With Proposed Boundary

Year	Prog	9	10	11	12	12/OAC	21 & Older	Other	TOTAL	UF %
2025	Total	122	125	132	221			25	625	54.5%

Year	Prog	9	10	11	12	12/OAC	21 & Older	Other	TOTAL	UF %
2026	Total	125	138	164	175			25	627	54.7%

Year	Prog	9	10	11	12	12/OAC	21 & Older	Other	TOTAL	UF %
2027	Total	140	141	148	178			25	632	55.1%

New Riverside South Secondary School Projections with Proposed Boundary

Year	Projection	7	8	9	10	11	12	12/OAC	21 & Older	Other	TOTAL	UF %
2025	Not Considering Residential Growth	167	185	183	142	138	138			0	954	62.9%
	Considering Anticipated Residential Growth	191	209	207	166	162	162			0	1098	72.4%

Year	Projection	7	8	9	10	11	12	12/OAC	21 & Older	Other	TOTAL	UF %
2026	Not Considering Residential Growth	199	169	221	218	165	169			0	1141	75.2%
	Considering Anticipated Residential Growth	207	201	257	255	201	207			0	1327	87.6%

Year	Projection	7	8	9	10	11	12	12/OAC	21 & Older	Other	TOTAL	UF %
2027	Not Considering Residential Growth	197	201	201	263	253	203			0	1317	86.9%
	Considering Anticipated Residential Growth	205	217	247	314	304	255			0	1542	101.7%

Anticipated residential growth accounts for the student yields from the Vacant Urban Residential Land Survey (VURLS) over a 25 year planning horizon. This growth translates to approximately 45 new students (aged 12-17) per year from 2022 onwards, or 8 students per grade per year. Note that current student yields are from the 2019 EDC By-law Study, and are likely out-of-date. The opening of a new high school and the re-direction of students from other boards was modeled into the above projections.

The following tables are to be read in conjunction with the City of Ottawa Vacant Urban Residential Land Survey (VURLS). The tables estimate the number of elementary and secondary students that the Ottawa-Carleton District School Board anticipates to yield from the planned greenfield developments within Riverside South and Leirtrim. These projections are over a 25-year planning horizon.

Riverside South – Vacant Land to be Developed			
Parcel #	Total Units	Estimated Elementary Yield	Estimated Secondary Yield
402	920	23	8
405	277	27	8
407	1301	78	22
411	265	28	8
414	1158	198	55
416	26	6	2
443	644	16	6
444	113	3	1
462	203	29	9
463	55	11	3
464	55	16	5
465	54	13	4
466	180	5	2
471	1273	296	84
472	123	24	6
474	253	59	17
475	18	1	0
476	495	118	34
477	54	15	5
478	106	3	1
479	55	1	0
480	63	12	3
482	98	19	5
483	265	51	14
484	374	51	14
485	77	2	1
486	627	16	6
487	77	2	1
488	491	12	4
489	280	7	3
490	389	10	4
491	27	1	0
492	1240	263	74
493	1	0	0
494	727	18	7

495	919	23	8
496	47	1	0
497	3387	85	30
498	1040	26	9
499	438	11	4
Total	18195	1578	466

Table 1: Estimate of Elementary and Secondary Yield from Planned Greenfield Development in Riverside South

Leitrim – Vacant Land to be Developed			
Parcel #	Total Units	Estimated Elementary Yield	Estimated Secondary Yield
503	102	22	8
504	358	55	19
505	179	4	2
506	17	3	1
508	9	1	0
509	247	38	14
510	315	58	20
519	334	49	17
520	392	71	25
521	153	24	9
524	2	0	0
525	389	76	26
527	42	9	3
Total	2539	411	142

Table 2: Estimate of Elementary and Secondary Yield from Planned Greenfield Development in Leitrim

