

# NEW FINDLAY CREEK ELEMENTARY SCHOOL STUDY

Opening Grade Structure, Program Offering,  
Attendance Boundary, and  
Other Related Changes



## Public Consultation Information Package

Wednesday, November 29, 2023  
7:00 to 9:00 pm

Gymnasium  
Vimy Ridge Public School  
4180 Kelly Farm Drive, Gloucester, ON K1T 4J2





---

---

## Table of Contents

	<b>Page</b>
1. Overview	1
2. Planning Considerations	1-2
3. The Working Group	2
4. Proposal – New Findlay Creek Elementary School Attendance Boundary, Program, and Opening Grade Structure	2-4
5. Additional Considerations – Interim Accommodation Measures	4
6. Consultative Process and Next Steps	4-5
7. General Location Map	6
8. Vimy Ridge Public School – Attendance Boundary	7
9. Proposed Attendance Boundary Maps -	
I. New Findlay Creek Elementary School	8
II. Vimy Ridge Public School JK to 6	9
III. Vimy Ridge Public School Grades 7 to 8	10
10. Junior Kindergarten to Grade 5 Structure and Five Year Projections	11-17
11. Junior Kindergarten to Grade 6 Structure and Five Year Projections	18-24
12. Additional Information	25
I. Vimy Ridge PS Historical Enrolment Information	26
II. Robert Bateman PS Attendance Boundary	27
III. Roberta Bondar PS Attendance Boundary	28
13. Question and Answer Sheet	29-30
14. Comment Sheet	31



## **Overview**

This review was initiated in order to set the attendance boundary, opening grade structure, and program offering for a future as-yet named New Findlay Creek Elementary School to be opened in the Findlay Creek development area of Leitrim.

The need for a new elementary school in the development area was first identified in the City of Ottawa's Findlay Creek Community Design Plan (CDP). In total the CDP process resulted in the identification of a requirement for two future elementary school sites. One of those sites is currently operating – Vimy Ridge Public School, which opened in September 2017.

In April 2022, funding for the new school was announced by the Ministry of Education. The 2.55 ha (6.3 acre) site is located at 820 Miikana Road, at the southeast intersection of Kelly Farm Drive and Miikana Road. The scheduled opening date of the new school is September 2024.

The completion of this study will confirm the new school's program offering, attendance boundary, and opening grade structure; as well as determine the revised attendance boundary area for Vimy Ridge Public School. In addition, a decision will be made regarding those students temporarily accommodated at Robert Bateman Public School and Roberta Bondar Public School as a result of interim accommodation measures.

## **Planning Considerations**

Findlay Creek is a rapidly developing residential area expected to contain approximately 11,000 new homes at full build-out. The second elementary school to be opened is the final of two planned schools for the OCDSB in the community.

Current Kindergarten to Grade 8 students residing in Findlay Creek are directed to Vimy Ridge Public School for the English with Core French and Early French Immersion programs. The school is located at 4180 Kelly Farm Drive in Findlay Creek. In addition to serving students in the Findlay Creek area, the school's attendance boundary area also includes areas extending west to Limebank Road, North of Rideau Road, and South of Leitrim Road.

As a result of being the only OCDSB school in the community, Vimy Ridge Public School is experiencing significant enrolment pressures. For the start of the 2023 school year, the school currently requires the use of 21 portable classrooms on site and is accommodating approximately 985 students in a facility with a pupil capacity of 674 students. Enrolment at the school and the need for additional instructional space is expected to continue to grow as the neighborhood continues to develop.

It should be noted that the New Riverside South Secondary School is scheduled to open in September of 2025. The opening grade structure, attendance boundary, and

program offering was approved by Board in September 2023. As a result, Vimy Ridge Public School's grade structure will be reduced to Kindergarten to Grade 6 in September 2025, easing some of the accommodation pressures on the school.

Given the pressures at Vimy Ridge Public School, an interim accommodation measure has been in place until the New Findlay Creek Elementary School is open and operating. As per report #22-037 (can be found on the OCDSB website), new students moving into the Vimy Ridge Public School attendance boundary area as of 1 January 2023 and beyond are currently being directed to Robert Bateman Public School for Kindergarten to Grade 6 English with Core French and Early French Immersion, and to Roberta Bondar Public School for Grades 7 and 8 English with Core French and Early French Immersion.

### **The Working Group**

In the fall of 2023, Board staff established a working group whose responsibility was to meet and discuss proposed options for the New Findlay Creek Elementary School as well as associated changes. The working group was comprised of Board staff as well as two representatives from each of the following schools:

- Vimy Ridge Public School;
- Robert Bateman Public School; and
- Roberta Bondar Public School.

Representatives from local community associations were also invited to sit on the working group, the Superintendent of Instruction, and the trustee (s) for the area were invited to attend as well.

The working group's role was to provide localized input and advice to planning staff with regard to the preparation and evaluation of options, community alignments, and parental and family preferences as they relate to student movement.

Representatives were also asked to update their school councils and organizations regarding the study process and in some cases request feedback.

### **Proposed New Findlay Creek Elementary School Attendance Boundary, Program, and Opening Grade Structure**

A proposal has been prepared for your comment this evening. The scenario not only provides Findlay Creek area students with access to local elementary schools, but

would also reduce overcrowding at Vimy Ridge Public School and reduce its future need for portable classrooms.

Under the proposal, the New Findlay Creek Elementary School would offer a dual-track Junior Kindergarten to Grade 6 English with Core French and Early French Immersion program. The new school is scheduled to open for September 2024. Students attending this new school will feed to the New Riverside South Secondary School for Grades 7 to 12 upon its opening in September 2025.

The new school's attendance boundary would be comprised of a portion of the current Vimy Ridge Public School attendance boundary. This includes all areas east of Bank Street; south of Leitrim Road, west of Hawthorne Road, north of Blais Road; and all areas east of Albion Road South, north of Rideau Road, west of Bank Street, and along a wooded corridor that runs just south of Wood Acres Grove and Netley Circle.

It is typical of a new school to open with a Junior Kindergarten to Grade 5 structure (adding Grade 6 the following year), in order to allow Grade 6 students to complete their final year at their current school, and possibly avoid having to attend three schools in three years.

Staff is seeking input as to whether this school should open with a Junior Kindergarten to Grade 5 structure (adding Grade 6 the following year); or with a full complement of Junior Kindergarten to Grade 6 upon its opening.

In addition to the above, those Grade 7 and 8 students (and Grade 6 students dependent on the opening grade structure of the New Findlay Creek Elementary School) as of September 2024 residing within the New Findlay Creek Elementary School attendance boundary will continue to be directed to Vimy Ridge Public School.

A Junior Kindergarten to Grade 8 structure is not being considered for the New Findlay Creek Elementary School given that the New Riverside South Secondary School, scheduled to open in September 2025 will have a Grade 7 to 12 grade structure, and redirect all Grade 7 and 8 students from Vimy Ridge Public School upon opening.

It is important to note that upon opening the new school, a full block move of those students currently attending Vimy Ridge Public School and residing within the New Findlay Creek Elementary School attendance boundary will take place. This would serve to alleviate significant pressures at Vimy Ridge Public School.

Given the enrolment pressures currently experienced at Vimy Ridge Public School, staff are not proposing that a grandfathering provision be put in place for students who reside within the New Findlay Creek Elementary School attendance boundary area and wish to continue their schooling at Vimy Ridge Public School. A provision such as this would continue the accommodation pressures currently being experienced at Vimy Ridge Public School, and would reduce enrolment at the newly opening school.

It should be noted that projecting enrolment for a new school can be challenging, and is impacted by a number of different factors and assumptions: student movement and choice, the rate of growth and development, and the presence or absence of other local school options. As such, enrolment figures for the new school could vary more than typical from those which have been projected.

## **Additional Considerations – Interim Accommodation Measures**

In addition to the above, staff need to take into consideration those students impacted by the Vimy Ridge Public School interim accommodation measures that were Board approved on 31 May 2022 and set to expire upon the opening of the New Findlay Creek Elementary School. Those measures are identified below.

As of 1 January 2023, any new students moving into the Vimy Ridge Public School attendance boundary area have been directed to Robert Bateman Public School for Junior Kindergarten to Grade 6 English with Core French and Early French Immersion, and Roberta Bondar Public School for Grade 7 and 8 English with Core French and Early French Immersion. This measure was put into place due to the overcrowding and unavailable space at Vimy Ridge Public School.

As a result of the opening of the New Findlay Creek Elementary School in September 2024, it is anticipated that those students currently attending Junior Kindergarten to Grade 6 at Robert Bateman Public School and residing within the Vimy Ridge Public School or New Findlay Creek Elementary School attendance boundary are to be repatriated to their home school – Vimy Ridge Public School or the New Findlay Creek Elementary School. Staff are seeking input as to whether current Grade 5 students (Grade 6 as of September 2024) should remain in place at Robert Bateman Public School.

Staff are also seeking input as to whether current Grade 7 students at Roberta Bondar Public School as a result of the interim accommodation measures who will be in Grade 8 as of September 2024, should be given the one-time option to choose to stay at Roberta Bondar Public School for Grade 8, or be repatriated back to Vimy Ridge Public School.

## **Consultative Process and Next Steps**

The purpose of this Public Consultation Meeting is to receive input from affected school communities and members of the public with regard to the presented proposals. Parents and community members will be encouraged to provide input at this meeting,



however, feedback is appreciated and valued throughout the entire consultative process.

Once input from the community is reviewed, planning staff will prepare a recommendation report scheduled to go to the Board's Committee of the Whole on 16 January 2023. That meeting will include an opportunity for delegations from the public and Trustee debate regarding staff's recommendations.

A final decision by the Board regarding the study is scheduled to take place on 30 January 2023.

Public comments and/or questions regarding the study may be sent in to the following:

**Email:** [NewFindlayCreekES2@ocdsb.ca](mailto:NewFindlayCreekES2@ocdsb.ca)

**Fax:** 613-820-6968

**Mail:** New Findlay Creek ES  
Planning Department  
133 Greenbank Road  
Ottawa ON  
K2H 6L3

**Please note that Wednesday December 13<sup>th</sup> is the last day to submit comments.**

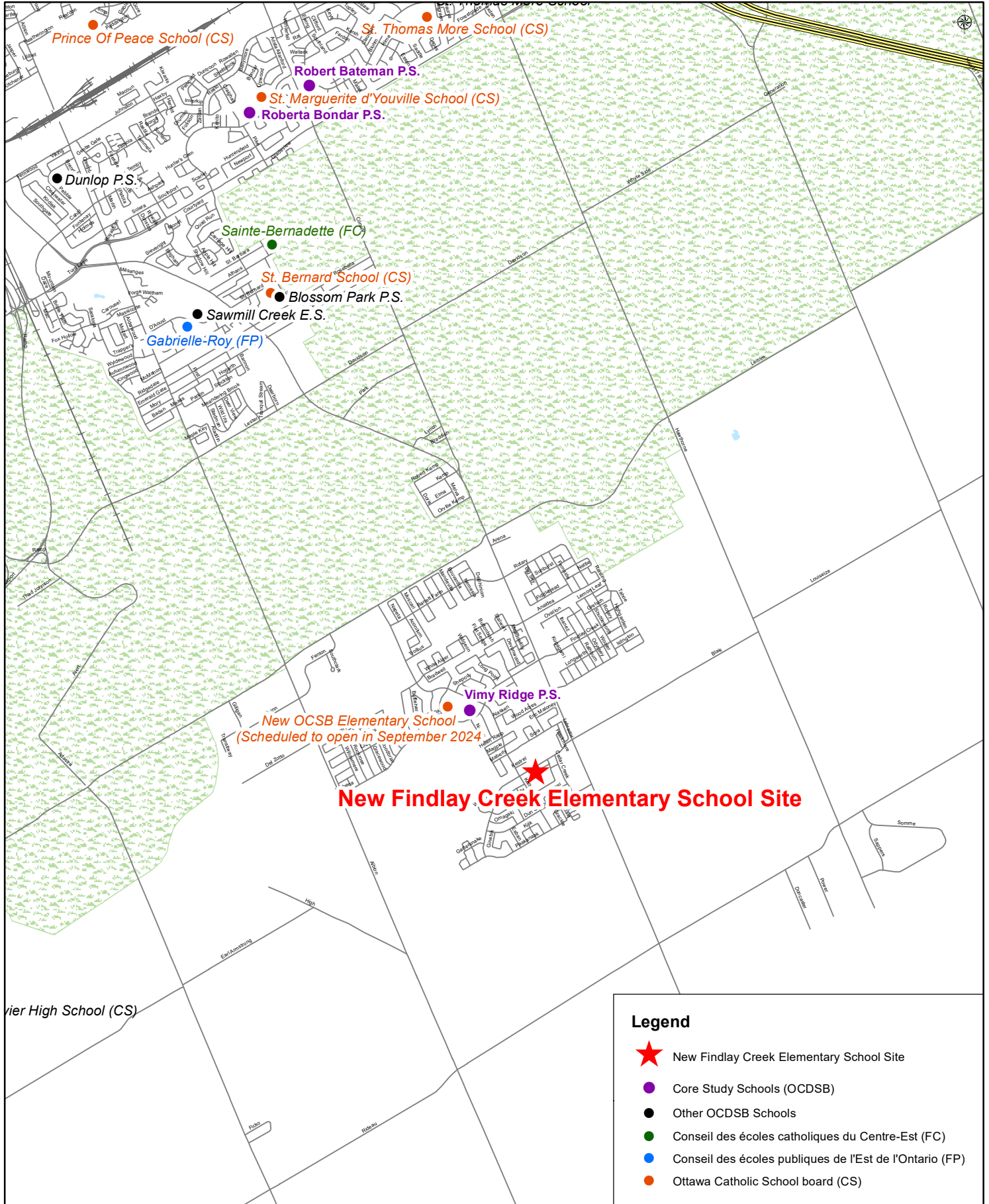
For additional information, please also visit our study webpage at:

[https://www.ocdsb.ca/board/consultations/new\\_findlay\\_creek\\_elementary\\_school\\_study](https://www.ocdsb.ca/board/consultations/new_findlay_creek_elementary_school_study)



OTTAWA-CARLETON  
DISTRICT SCHOOL BOARD

# New Findlay Creek E.S. General Location Map



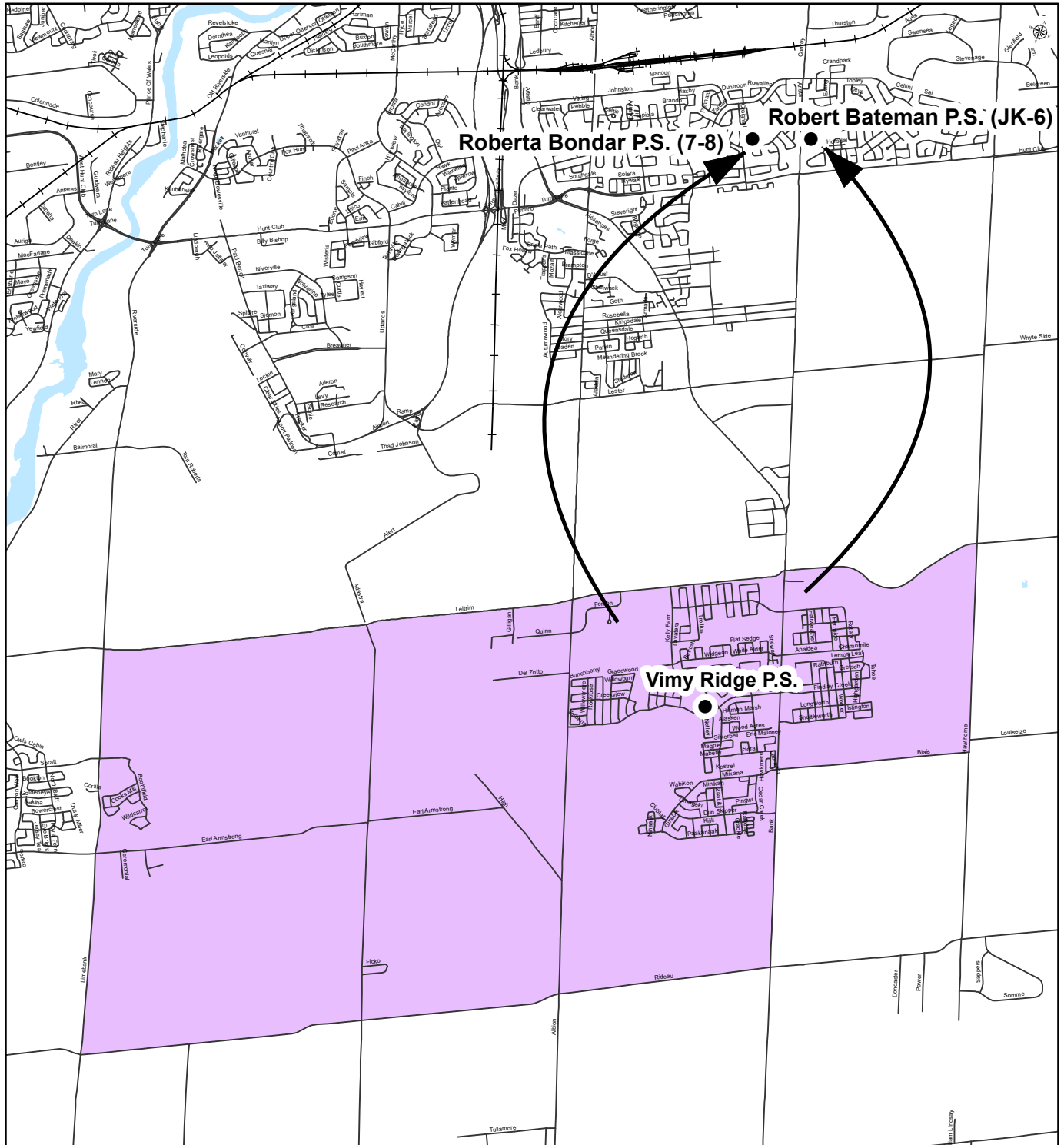


# VIMY RIDGE PUBLIC SCHOOL

## Junior Kindergarten to Grade 8

### English Program with Core French and Early French Immersion Attendance Boundary

OTTAWA-CARLETON DISTRICT SCHOOL BOARD



**NOTE :** An interim accommodation measure has been put in place in advance of the opening of the new Findlay Creek elementary school:

Commencing on 1 January 2023 students moving into the Vimy Ridge PS attendance boundary will be directed to Robert Bateman PS (Kindergarten to Grade 6) and Roberta Bondar PS (Grades 7 and 8). A sibling provision is outlined in Report 22-037 Vimy Ridge Public School – Interim Accommodation Measures.

Vimy Ridge Public School  
4180 Kelly Farm Drive  
Ottawa, Ontario  
K1T 4J2  
(613) 425-4400

Map is for illustrative purposes only.  
For further information, visit [www.ocdsb.ca](http://www.ocdsb.ca)  
September 2023



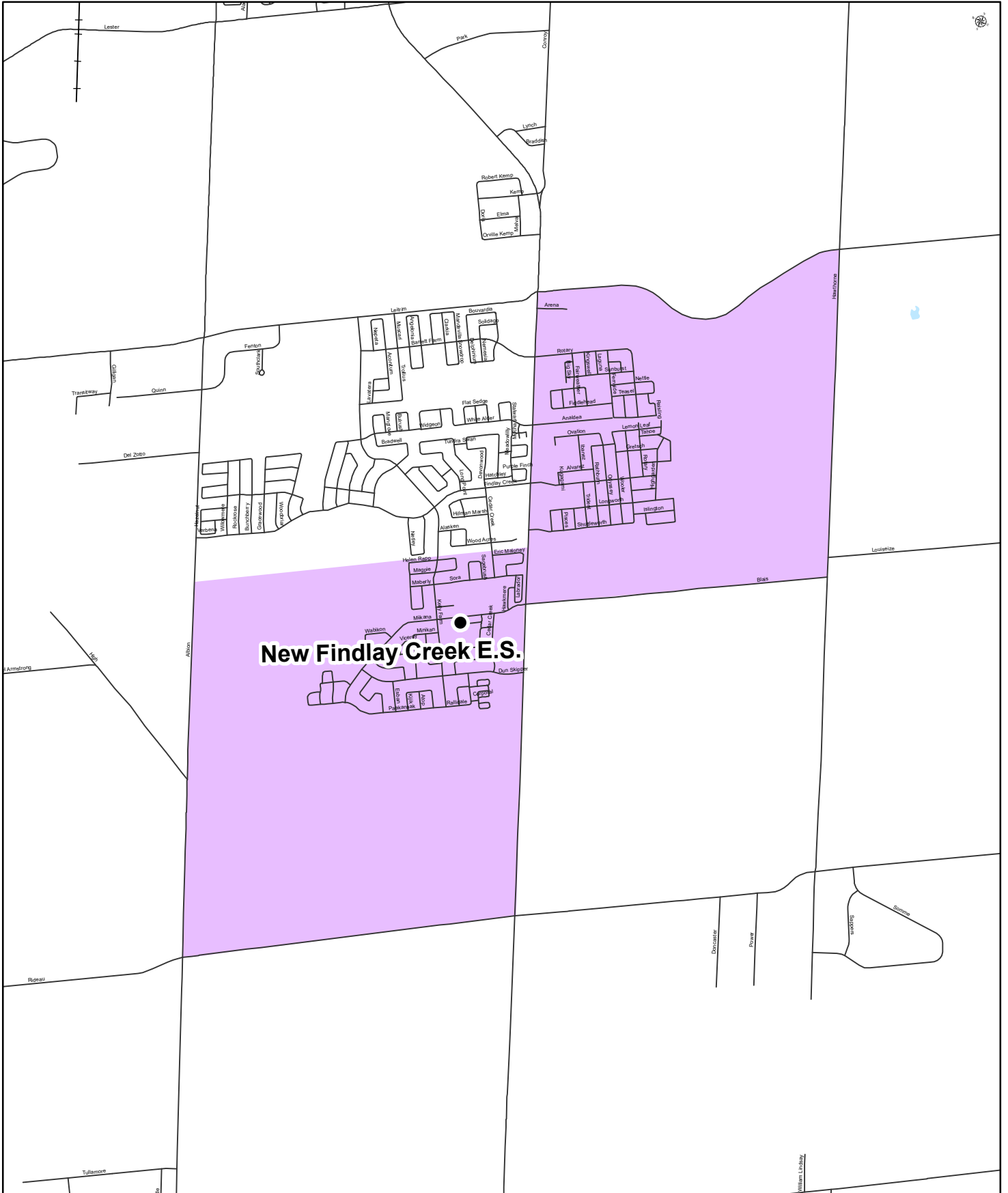
# New Findlay Creek Elementary School

## Proposed Attendance Boundary

### Junior Kindergarten to Grade 6

OTTAWA-CARLETON  
DISTRICT SCHOOL BOARD

### English Program with Core French and Early French Immersion Attendance Boundary

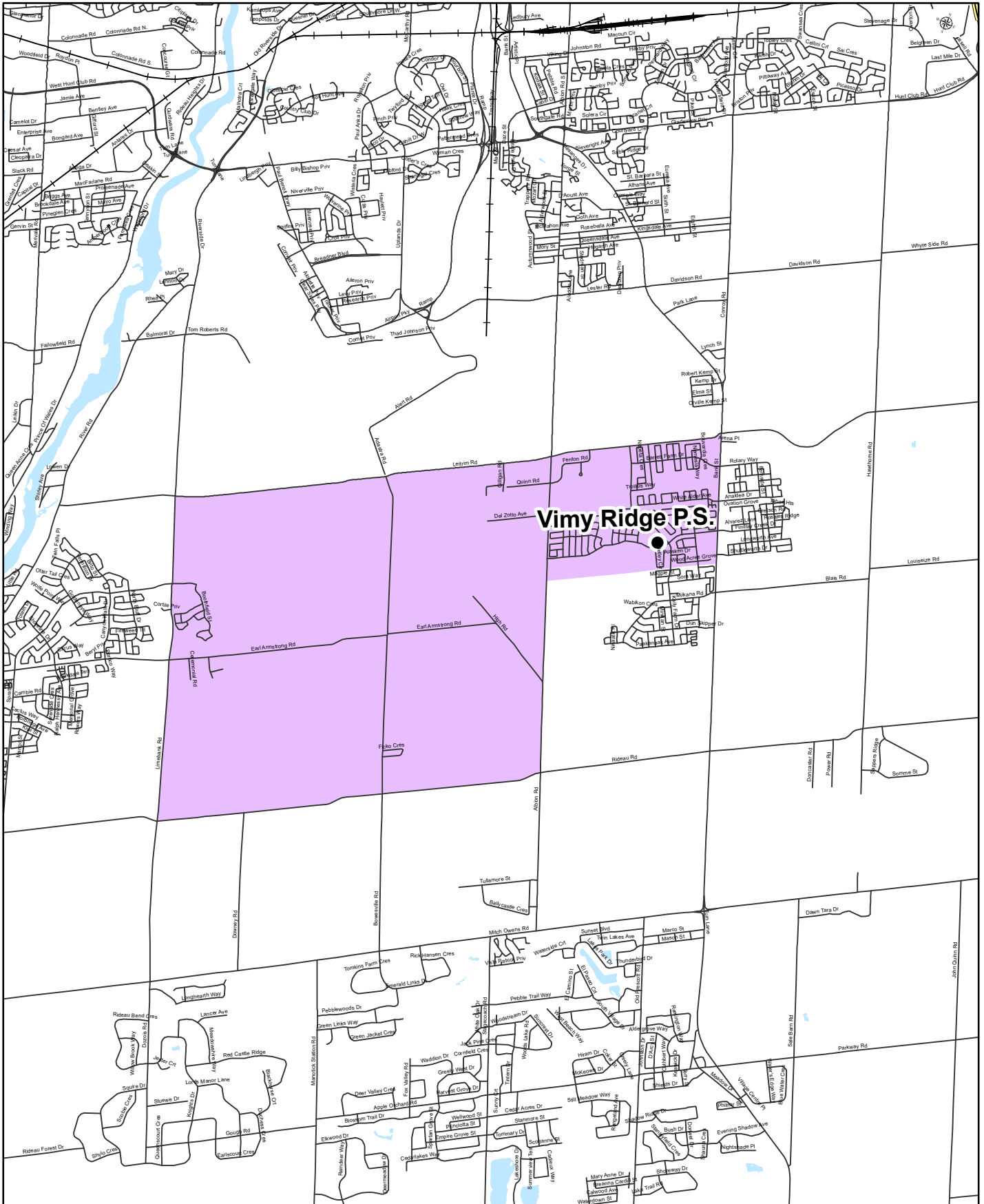




# VIMY RIDGE PUBLIC SCHOOL - Proposed Attendance Boundary

## Junior Kindergarten to Grade 6

### English Program with Core French and Early French Immersion Attendance Boundary



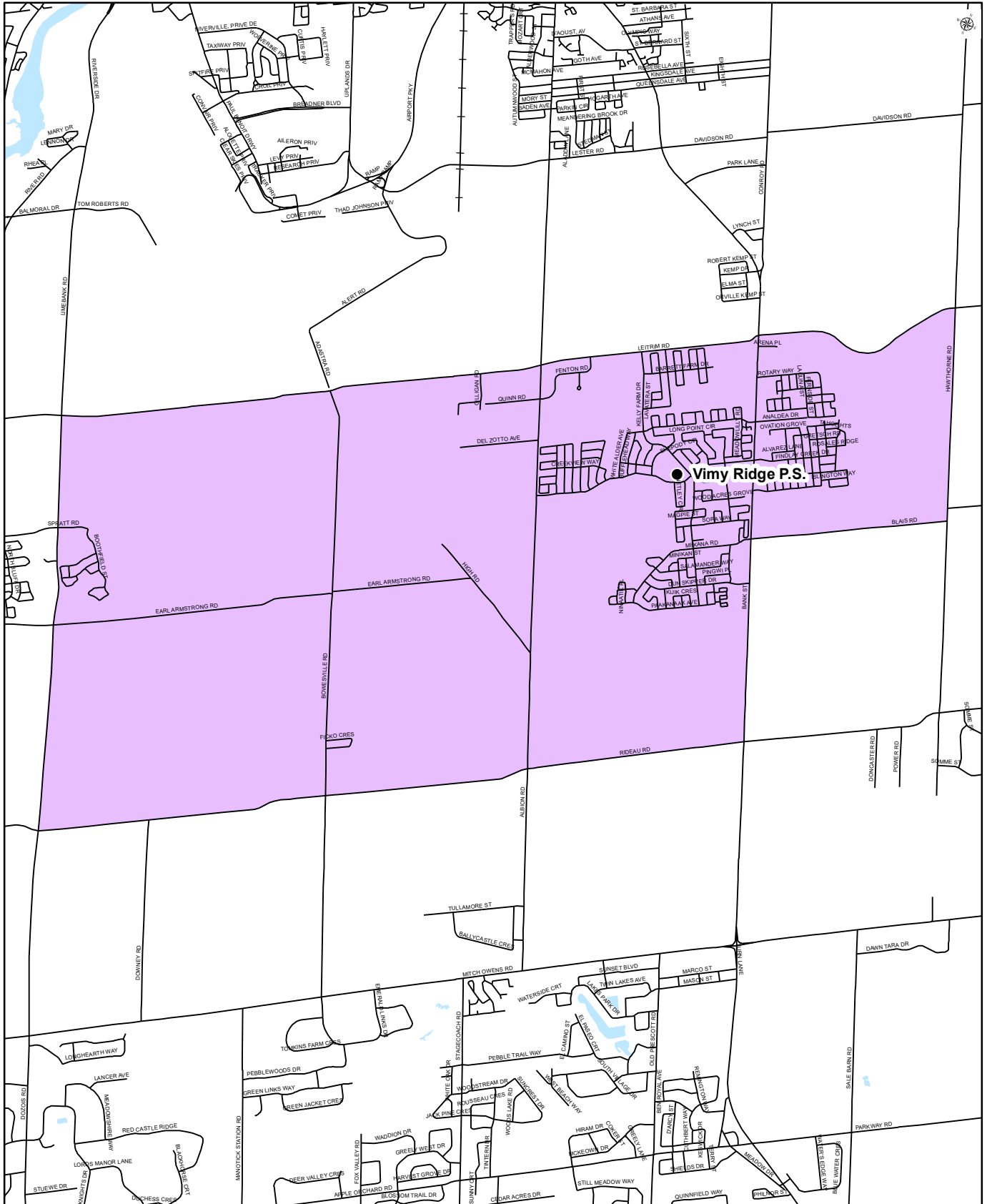




# VIMY RIDGE PUBLIC SCHOOL

## Grade 7 and 8 (September 2024 only - redirected to New Riverside South SS in September 2025)

### English Program with Core French and Early French Immersion Attendance Boundary



Vimy Ridge Public School  
 4180 Kelly Farm Drive  
 Ottawa, Ontario  
 K1T 4J2  
 (613) 425-4400

Map is for illustrative purposes only.  
 For further information, visit [www.ocdsb.ca](http://www.ocdsb.ca)  
 September 2023

**The New Findlay Creek Elementary School opens in September 2024  
with a dual-track Junior Kindergarten to Grade 5 structure (Grade 6  
Phases in September 2025**

Impact by School

**New Findlay Creek Elementary School**

- The new school opens with a Junior Kindergarten to Grade 5 structure for the September 2024 school year with a projected enrolment of 394 students.
- Grade 6 would phase into the school as of September 2025.

**Vimy Ridge Public School**

- A block move of Junior Kindergarten to Grade 5 students who reside within the proposed attendance boundary for the New Findlay Creek ES would take place.
- Students in Grades 6, 7, and 8 who reside within the New Findlay Creek ES attendance boundary will remain at Vimy Ridge PS. This will allow Grade 6 students to complete their final year at Vimy Ridge PS and avoid those students having to attend three schools in three years.
- A sibling provision would **not** exist for those Grade 6 students at Vimy Ridge PS in September 2024 who have a younger sibling that will attend the New Findlay Creek ES. As with new school openings, the Ministry will have an expectation of enrolment at that school upon its opening.
- As of September 2025 as per the opening of the New Riverside South Secondary School, all Grade 7 and 8 students at Vimy Ridge PS will be block moved to the new secondary school.
- In this option, the projection for Vimy Ridge PS in September 2024 is 649.

### **Robert Bateman Public School**

- Under this option, all Junior Kindergarten to Grade 5 students that are temporarily located at Robert Bateman PS would be block moved to Vimy Ridge PS or the New Findlay Creek ES based on their home address for the start of the September 2024 school year.
- Grade 6 students as of September 2024 would be grandparented at Robert Bateman PS, and then feed to the New Riverside South SS upon its opening in September 2025 for Grade 7.
- Those Grade 6 students would continue to be provided transportation to Robert Bateman PS.

### **Roberta Bondar Public School**

- Grade 7 students enrolled at Roberta Bondar PS based on the interim measures, will be given a one-time option to remain at that school for their graduating year or attend Vimy Ridge PS should they choose to.
- Upon completing Grade 8, these students will feed into the New Riverside South SS for the 2025 school year.
- Transportation would be provided to Roberta Bondar PS students who choose to remain at Roberta Bondar PS for their grade 8 year.



## New Findlay Creek Elementary School Study - JK to Grade 5 Opening Grade Structure (Grade 6 Phasing in September 2025)

### 2024 Projected Enrolments

School	Capacity	Program	JK	SK	1	2	3	4	5	6	7	8	SE	Total	UF(%)
NEW Findlay Creek ES	674	KGTN	60	52										112	58.5%
		ENG			15	15	31	29	25					115	
		EFI			47	36	33	26	25					167	
		TOTAL	60	52	62	51	64	55	50					394	
Vimy Ridge PS	674	KGTN	60	42										102	96.3%
		ENG			14	21	26	23	35	39	22	40	18	238	
		EFI			54	36	38	41	39	56	22	23		309	
		Total	60	42	68	57	64	64	74	95	44	63	18	649	
Robert Bateman PS	621	KGTN	23	36										59	49.9%
		ENG			17	13	20	19	14	33			9	125	
		EFI			34	16	21	18	13	24				126	
		Total	23	36	51	29	41	37	27	57			9	310	
Roberta Bondar PS	732	KGTN	50	42										92	86.1%
		ENG			7	20	22	19	22	10	38	72	20	230	
		EFI			40	40	31	42	32	37	48	38		308	
		Total	50	42	47	60	53	61	54	47	86	110	20	630	

Utilization (UF%) = Total enrolment/capacity.

Programs: ENG = English Program with Core French, EFI = Early French Immersion, SE = Special Education

Note: New Findlay Creek ES opens as JK-5 to allow Grade 6's at Vimy Ridge PS to complete final year at their school.

**New Findlay Creek Elementary School Study - JK to Grade 5 Opening Grade Structure (Grade 6 Phasing in September 2025)**

**2025 Projected Enrolments**

School	Capacity	Program	JK	SK	1	2	3	4	5	6	7	8	SE	Total	UF(%)
NEW Findlay Creek ES	674	KGTN	72	69										141	74.2%
		ENG			14	19	19	39	30	28				149	
		EFI			44	43	34	34	26	29				210	
		TOTAL	72	69	58	62	53	73	56	57				500	
Vimy Ridge PS	674	KGTN	65	61										126	82.9%
		ENG			10	25	28	27	31	43			18	182	
		EFI			55	49	34	35	40	38				251	
		Total	65	61	65	74	62	62	71	81			18	559	
Robert Bateman PS	621	KGTN	26	26										52	44.1%
		ENG			12	15	12	22	19	16			8	104	
		EFI			25	27	15	19	18	14				118	
		Total	26	26	37	42	27	41	37	30			8	274	
Roberta Bondar PS	732	KGTN	43	54										97	86.7%
		ENG			7	13	27	23	21	23	61	41	20	236	
		EFI			37	37	36	27	38	31	48	48		302	
		Total	43	54	44	50	63	50	59	54	109	89	20	635	

*Utilization (UF%) = Total enrolment/capacity.*

*Programs: ENG = English Program with Core French, EFI = Early French Immersion, SE = Special Education*

*Note: Riverside South Secondary School scheduled opening in September 2025 - block move of Grades 7-8 from Vimy Ridge PS;*

*Grade 6 phases into New Findlay Creek ES.*

**New Findlay Creek Elementary School Study - JK to Grade 5 Opening Grade Structure (Grade 6 Phasing in September 2025)**

**2026 Projected Enrolments**

School	Capacity	Program	JK	SK	1	2	3	4	5	6	7	8	SE	Total	UF(%)
NEW Findlay Creek ES	674	KGTN	75	83										158	82.2%
		ENG			19	17	23	23	41	33				156	
		EFI			59	41	41	35	35	29				240	
		TOTAL	75	83	78	58	64	58	76	62				554	
Vimy Ridge PS	674	KGTN	65	66										131	85.2%
		ENG			15	18	33	29	36	38			18	187	
		EFI			55	50	46	31	35	39				256	
		Total	65	66	70	68	79	60	71	77			18	574	
Robert Bateman PS	621	KGTN	26	30										56	43.2%
		ENG			9	11	13	13	22	22			9	99	
		EFI			18	20	25	13	19	18				113	
		Total	26	30	27	31	38	26	41	40			9	268	
Roberta Bondar PS	732	KGTN	45	46										91	86.6%
		ENG			9	11	16	28	25	22	55	66	20	252	
		EFI			47	34	33	32	25	37	35	48		291	
		Total	45	46	56	45	49	60	50	59	90	114	20	634	

*Utilization (UF%) = Total enrolment/capacity.*

*Programs: ENG = English Program with Core French, EFI = Early French Immersion, SE = Special Education*

**New Findlay Creek Elementary School Study - JK to Grade 5 Opening Grade Structure (Grade 6 Phasing in September 2025)**

**2027 Projected Enrolments**

School	Capacity	Program	JK	SK	1	2	3	4	5	6	7	8	SE	Total	UF(%)
NEW Findlay Creek ES	674	KGTN	77	86										163	90.7%
		ENG			22	23	22	29	25	45				166	
		EFI			70	55	39	43	36	39				282	
		TOTAL	77	86	92	78	61	72	61	84				611	
Vimy Ridge PS	674	KGTN	67	66										133	88.1%
		ENG			16	26	24	34	38	43			18	199	
		EFI			57	50	47	43	31	34				262	
		Total	67	66	73	76	71	77	69	77			18	594	
Robert Bateman PS	621	KGTN	26	29										55	40.6%
		ENG			10	8	10	15	13	26			9	91	
		EFI			20	14	18	22	13	19				106	
		Total	26	29	30	22	28	37	26	45			9	252	
Roberta Bondar PS	732	KGTN	45	49										94	84.4%
		ENG			7	15	15	17	30	27	60	59	20	250	
		EFI			40	43	30	29	29	24	44	35		274	
		Total	45	49	47	58	45	46	59	51	104	94	20	618	

*Utilization (UF%) = Total enrolment/capacity.*

*Programs: ENG = English Program with Core French, EFI = Early French Immersion, SE = Special Education*

**New Findlay Creek Elementary School Study - JK to Grade 5 Opening Grade Structure (Grade 6 Phasing in September 2025)**

**2028 Projected Enrolments**

School	Capacity	Program	JK	SK	1	2	3	4	5	6	7	8	SE	Total	UF(%)
NEW Findlay Creek ES	674	KGTN	80	89										169	96.0%
		ENG			23	28	29	27	30	27				164	
		EFI			73	65	52	40	43	41				314	
		TOTAL	80	89	96	93	81	67	73	68				647	
Vimy Ridge PS	674	KGTN	67	68										135	91.5%
		ENG			16	28	34	24	45	46			18	211	
		EFI			57	52	47	43	42	30				271	
		Total	67	68	73	80	81	67	87	76			18	617	
Robert Bateman PS	621	KGTN	26	29										55	40.6%
		ENG			10	8	10	15	13	26			9	91	
		EFI			20	14	18	22	13	19				106	
		Total	26	29	30	22	28	37	26	45			9	252	
Roberta Bondar PS	732	KGTN	45	49										94	84.4%
		ENG			7	15	15	17	30	27	60	59	20	250	
		EFI			40	43	30	29	29	24	44	35		274	
		Total	45	49	47	58	45	46	59	51	104	94	20	618	

*Utilization (UF%) = Total enrolment/capacity.*

*Programs: ENG = English Program with Core French, EFI = Early French Immersion, SE = Special Education*

**The New Findlay Creek Elementary School opens in 2024 with a dual-track Junior Kindergarten to Grade 6 structure**

Impact by School

**New Findlay Creek Elementary School**

- The new school opens with a Junior Kindergarten to Grade 6 structure for the September 2024 school year with a projected enrolment of 443 students.

**Vimy Ridge Public School**

- A block move of all Junior Kindergarten to Grade 6 students that reside within the proposed New Findlay Creek ES attendance boundary who currently attend Vimy Ridge PS for the start of September 2024.
- Vimy Ridge PS would still offer Grade 7 and 8 programs until the New Riverside South SS opens in 2025. At that time, the Grade 7 and 8 students from Vimy Ridge PS will be redirected to the new secondary school in a block move.
- This scenario would allow for more students to be able to attend school with their siblings, with the exception of having an older sibling in grade 7 and 8 who would attend Vimy Ridge PS for the 2024 school year.
- In this option, Vimy Ridge PS' is projected at 616 students for September 2024.

### **Robert Bateman Public School**

- Under this option, all Junior Kindergarten to Grade 6 students that are temporarily located at Robert Bateman PS would be block moved to Vimy Ridge PS or the New Findlay Creek ES based on their home address for the start of the September 2024 school year.
- Block moving the students enrolled at Robert Bateman PS due to the interim measures would direct students back to their local community schools, all siblings would remain together.

### **Roberta Bondar Public School**

- Grade 7 students enrolled at Roberta Bondar PS based on the interim measures, will be given a one-time option to remain at that school for their graduating year or attend Vimy Ridge PS should they choose to.
- Upon completing Grade 8, these students will feed into the New Riverside South SS for the 2025 school year.
- Transportation would be provided to Roberta Bondar PS students who choose to remain at Roberta Bondar PS for their grade 8 year.

**\*Planning staff do have a preference for Option #2. The option opens the New Findlay Creek Elementary School with a full complement of Junior Kindergarten to Grade 6 with a robust enrolment, and will result in more siblings remaining together at one school. This option also relieves more of the accommodation pressure on Vimy Ridge Public School. The option also repatriates all those students holding at Robert Bateman Public School in the interim, and provides those students holding at Roberta Bondar Public School an option to return to Vimy Ridge Public School or remain at Roberta Bondar Public School for their graduating year.**

## New Findlay Creek Elementary School Study - JK to Grade 6 Opening Grade Structure

### 2024 Projected Enrolments

School	Capacity	Program	JK	SK	1	2	3	4	5	6	7	8	SE	Total	UF(%)
NEW Findlay Creek ES	674	KGTN	60	52										112	65.7%
		ENG			15	15	31	29	25	25				140	
		EFI			47	36	33	26	25	24				191	
		TOTAL	60	52	62	51	64	55	50	49				443	
Vimy Ridge PS	674	KGTN	60	42										102	91.4%
		ENG			14	21	26	23	35	25	22	40	18	224	
		EFI			54	36	38	41	39	37	22	23		290	
		Total	60	42	68	57	64	64	74	62	44	63	18	616	
Robert Bateman PS	621	KGTN	23	36										59	47.3%
		ENG			17	13	20	19	14	22			9	114	
		EFI			34	16	21	18	13	19				121	
		Total	23	36	51	29	41	37	27	41			9	294	
Roberta Bondar PS	732	KGTN	50	42										92	86.1%
		ENG			7	20	22	19	22	10	38	72	20	230	
		EFI			40	40	31	42	32	37	48	38		308	
		Total	50	42	47	60	53	61	54	47	86	110	20	630	

*Utilization (UF%) = Total enrolment/capacity.*

*Programs: ENG = English Program with Core French, EFI = Early French Immersion, SE = Special Education*

*Note: New Findlay Creek ES opens with a full JK-6 Grade Structure*



## New Findlay Creek Elementary School Study - JK to Grade 6 Opening Grade Structure

### 2025 Projected Enrolments

School	Capacity	Program	JK	SK	1	2	3	4	5	6	7	8	SE	Total	UF(%)
NEW Findlay Creek ES	674	KGTN	72	69										141	74.2%
		ENG			14	19	19	39	30	28				149	
		EFI			44	43	34	34	26	29				210	
		TOTAL	72	69	58	62	53	73	56	57				500	
Vimy Ridge PS	674	KGTN	65	61										126	82.9%
		ENG			10	25	28	27	31	43			18	182	
		EFI			55	49	34	35	40	38				251	
		Total	65	61	65	74	62	62	71	81			18	559	
Robert Bateman PS	621	KGTN	26	26										52	44.1%
		ENG			12	15	12	22	19	16			8	104	
		EFI			25	27	15	19	18	14				118	
		Total	26	26	37	42	27	41	37	30			8	274	
Roberta Bondar PS	732	KGTN	43	54										97	86.7%
		ENG			7	13	27	23	21	23	61	41	20	236	
		EFI			37	37	36	27	38	31	48	48		302	
		Total	43	54	44	50	63	50	59	54	109	89	20	635	

*Utilization (UF%) = Total enrolment/capacity.*

*Programs: ENG = English Program with Core French, EFI = Early French Immersion, SE = Special Education*

*Note: Riverside South Secondary School scheduled opening in September 2025 - block move of Grades 7-8 from Vimy Ridge PS;*

*Grade 6 phases into New Findlay Creek ES.*

## New Findlay Creek Elementary School Study - JK to Grade 6 Opening Grade Structure

### 2026 Projected Enrolments

School	Capacity	Program	JK	SK	1	2	3	4	5	6	7	8	SE	Total	UF(%)
NEW Findlay Creek ES	674	KGTN	75	83										158	82.2%
		ENG			19	17	23	23	41	33				156	
		EFI			59	41	41	35	35	29				240	
		TOTAL	75	83	78	58	64	58	76	62				554	
Vimy Ridge PS	674	KGTN	65	66										131	85.2%
		ENG			15	18	33	29	36	38			18	187	
		EFI			55	50	46	31	35	39				256	
		Total	65	66	70	68	79	60	71	77			18	574	
Robert Bateman PS	621	KGTN	26	30										56	43.2%
		ENG			9	11	13	13	22	22			9	99	
		EFI			18	20	25	13	19	18				113	
		Total	26	30	27	31	38	26	41	40			9	268	
Roberta Bondar PS	732	KGTN	45	46										91	86.6%
		ENG			9	11	16	28	25	22	55	66	20	252	
		EFI			47	34	33	32	25	37	35	48		291	
		Total	45	46	56	45	49	60	50	59	90	114	20	634	

Utilization (UF%) = Total enrolment/capacity.

Programs: ENG = English Program with Core French, EFI = Early French Immersion, SE = Special Education

## New Findlay Creek Elementary School Study - JK to Grade 6 Opening Grade Structure

### 2027 Projected Enrolments

School	Capacity	Program	JK	SK	1	2	3	4	5	6	7	8	SE	Total	UF(%)
NEW Findlay Creek ES	674	KGTN	77	86										163	90.7%
		ENG			22	23	22	29	25	45				166	
		EFI			70	55	39	43	36	39				282	
		TOTAL	77	86	92	78	61	72	61	84				611	
Vimy Ridge PS	674	KGTN	67	66										133	88.1%
		ENG			16	26	24	34	38	43			18	199	
		EFI			57	50	47	43	31	34				262	
		Total	67	66	73	76	71	77	69	77			18	594	
Robert Bateman PS	621	KGTN	26	29										55	40.6%
		ENG			10	8	10	15	13	26			9	91	
		EFI			20	14	18	22	13	19				106	
		Total	26	29	30	22	28	37	26	45			9	252	
Roberta Bondar PS	732	KGTN	45	49										94	84.4%
		ENG			7	15	15	17	30	27	60	59	20	250	
		EFI			40	43	30	29	29	24	44	35		274	
		Total	45	49	47	58	45	46	59	51	104	94	20	618	

*Utilization (UF%) = Total enrolment/capacity.*

*Programs: ENG = English Program with Core French, EFI = Early French Immersion, SE = Special Education*

## New Findlay Creek Elementary School Study - JK to Grade 6 Opening Grade Structure

### 2028 Projected Enrolments

School	Capacity	Program	JK	SK	1	2	3	4	5	6	7	8	SE	Total	UF(%)
NEW Findlay Creek ES	674	KGTN	80	89										169	96.0%
		ENG			23	28	29	27	30	27				164	
		EFI			73	65	52	40	43	41				314	
		TOTAL	80	89	96	93	81	67	73	68				647	
Vimy Ridge PS	674	KGTN	67	68										135	91.5%
		ENG			16	28	34	24	45	46			18	211	
		EFI			57	52	47	43	42	30				271	
		Total	67	68	73	80	81	67	87	76			18	617	
Robert Bateman PS	621	KGTN	26	29										55	40.6%
		ENG			10	8	10	15	13	26			9	91	
		EFI			20	14	18	22	13	19				106	
		Total	26	29	30	22	28	37	26	45			9	252	
Roberta Bondar PS	732	KGTN	45	49										94	84.4%
		ENG			7	15	15	17	30	27	60	59	20	250	
		EFI			40	43	30	29	29	24	44	35		274	
		Total	45	49	47	58	45	46	59	51	104	94	20	618	

*Utilization (UF%) = Total enrolment/capacity.*

*Programs: ENG = English Program with Core French, EFI = Early French Immersion, SE = Special Education*

# **ADDITIONAL INFORMATION**

School: Vimy Ridge

## Historical Enrolment - All Programs

Year	JK	SK	1	2	3	4	5	6	7	8	Spec	JK/SK Total	1-6 Total	7&8 Total	TOTAL
2012															
2013															
2014															
2015															
2016															
2017	75	64	69	72	48	72	55	46	39	26	14	139	362	65	580
2018	99	85	68	74	75	54	70	62	50	47	15	184	403	97	699
2019	105	97	85	77	79	79	58	74	63	54	20	202	452	117	791
2020	101	112	109	91	91	85	85	63	69	75	23	213	524	144	904
2021	112	135	128	133	109	105	94	104	67	70	21	247	673	137	1078
2022	135	125	148	128	128	115	110	103	67	72	18	260	732	139	1149

## Historical Enrolment - Kindergarten

Year	JK	SK	1	2	3	4	5	6	7	8	Spec	JK/SK Total	1-6 Total	7&8 Total	TOTAL
2016															
2017	75	64										139			139
2018	99	85										184			184
2019	105	97										202			202
2020	101	112										213			213
2021	112	135										247			247
2022	135	125										260			260

## Historical Enrolment - English

Year	JK	SK	1	2	3	4	5	6	7	8	Spec	JK/SK Total	1-6 Total	7&8 Total	TOTAL
2012															
2013															
2014															
2015															
2016															
2017			24	23	24	35	29	23	21	20	14		158	41	213
2018			16	32	26	27	33	37	30	28	15		171	58	244
2019			16	26	38	36	32	33	35	33	20		181	68	269
2020			19	32	42	40	46	37	37	48	23		216	85	324
2021			34	44	45	55	51	64	41	39	21		394	80	394
2022			45	50	53	53	59	61	42	48	18		429	90	429

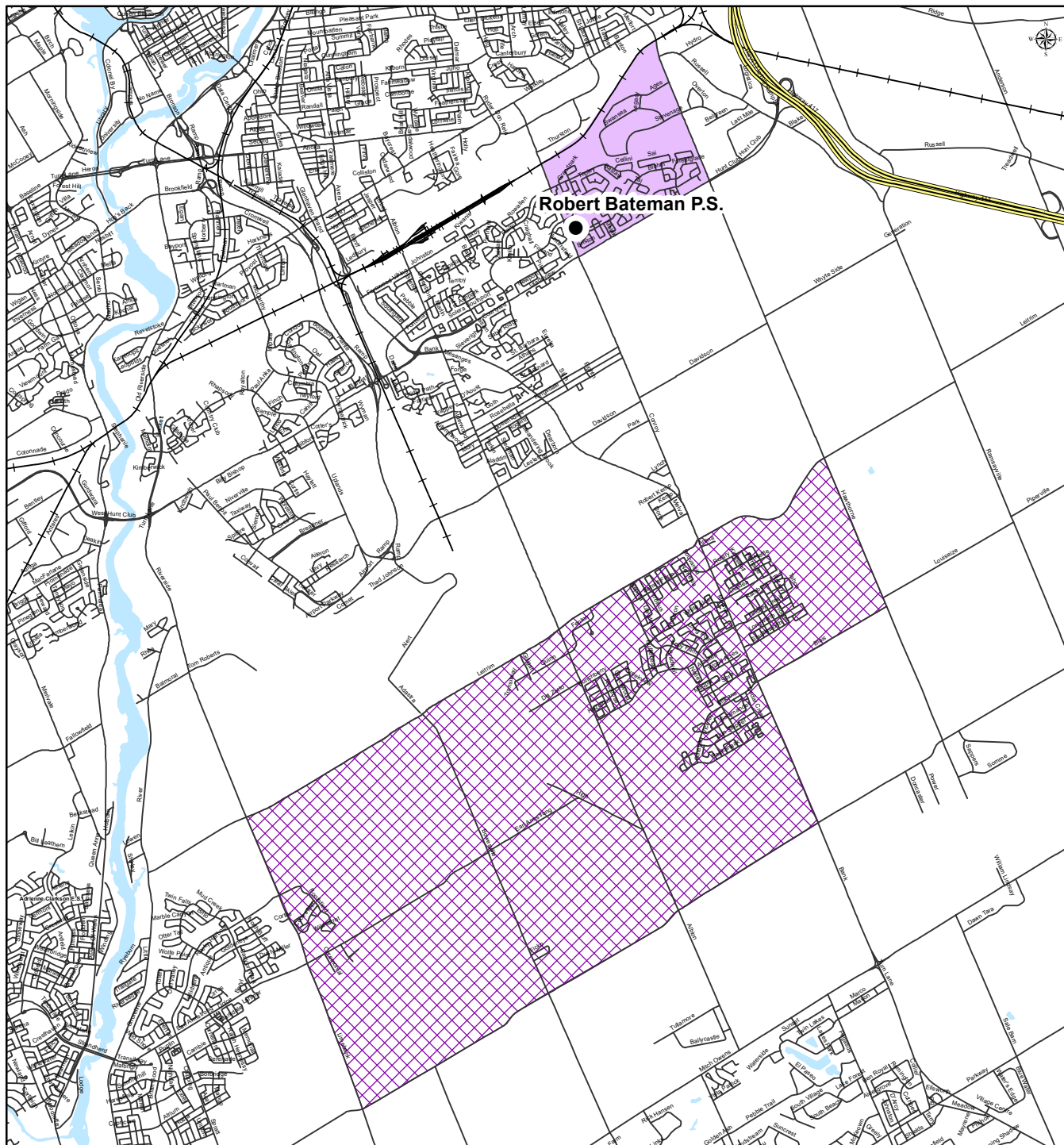
## Historical Enrolment - Early French Immersion


Year	JK	SK	1	2	3	4	5	6	7	8	Spec	JK/SK Total	1-6 Total	7&8 Total	TOTAL
2012															
2013															
2014															
2015															
2016															
2017			45	49	24	37	26	23	18	6			204	24	228
2018			52	42	49	27	37	25	20	19			232	39	271
2019			69	51	41	43	26	41	28	21			271	49	320
2020			90	59	49	45	39	26	32	27			308	59	367
2021			94	89	64	50	43	40	26	31			437	57	437
2022			103	78	75	62	51	42	25	24			460	49	460



**ROBERT BATEMAN PUBLIC SCHOOL**  
 Junior Kindergarten to Grade 6

**English Program with Core French and Early French Immersion Attendance Boundary**



 **NOTE :** An interim accommodation measure has been put in place in advance of the opening of the new Findlay Creek elementary school:

Commencing on 1 January 2023 students moving into the Vimy Ridge PS attendance boundary will be directed to Robert Bateman PS (Kindergarten to Grade 6) and Roberta Bondar PS (Grades 7 and 8). A sibling provision is outlined in Report 22-037 Vimy Ridge Public School – Interim Accommodation Measures.

Robert Bateman Public School  
 1250 Blohm Drive  
 Ottawa, Ontario  
 K1G 5R8  
 (613) 737-3169

Map is for illustrative purposes only.  
 For further information, visit [www.ocdsb.ca](http://www.ocdsb.ca)  
 September 2023

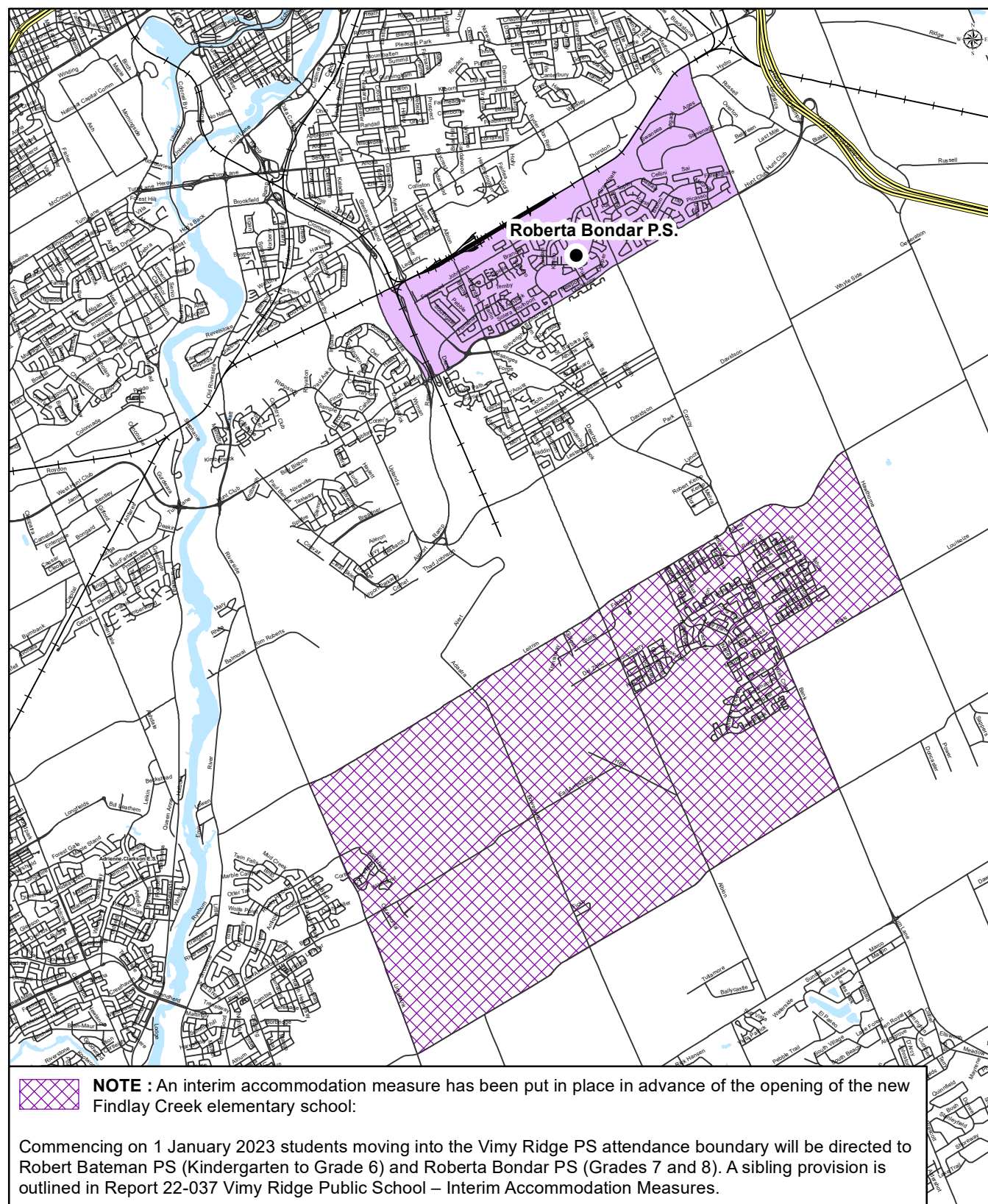




# ROBERTA BONDAR PUBLIC SCHOOL

Grade 7 to 8

English Program with Core French and Early French Immersion Attendance Boundary



Roberta Bondar Public School  
159 Lorry Greenberg Drive  
Ottawa, Ontario  
K1T 3J6  
(613) 736-7334

Map is for illustrative purposes only.  
For further information, visit [www.ocdsb.ca](http://www.ocdsb.ca)  
September 2023



## **Question & Answer Section**

**Q – When will the New Findlay Creek Elementary School open?**

*A – The New Findlay Creek Elementary School is currently under construction and scheduled to open for the September 2024 school year. The school is located at 820 Miikana Road. The new school will have 674 pupil spaces and include seven kindergarten classrooms, 21 regular classrooms, and additional ancillary spaces.*

**Q – Will you consider permitting students who are directed to the New Findlay Creek Elementary School to remain at Vimy Ridge Public School?**

*A – The proposal would open the new school with a JK to Grade 5 (Grade 6 phasing in the following year), or JK to Grade 6 structure (staff are seeking input on the opening grade structure).*

*If the new school opens as a JK to Grade 5, Grade 5 students attending Vimy Ridge Public School (in the year prior to opening) who reside within the new school's attendance area would stay at Vimy Ridge Public School for Grade 6.*

*Permitting younger students to remain at Vimy Ridge Public School would reduce the new school building's enrolment for a number of years, and would also not alleviate accommodation pressures at Vimy Ridge Public School.*

**Q – Will Vimy Ridge Public School continue to be overcrowded once the New Findlay Creek Elementary School opens?**

*A – Enrolment at Vimy Ridge Public School is expected to decrease to much more stable numbers upon the opening of the New Findlay Creek Elementary School, and the need for portables will be significantly reduced.*

**Q – Why is the New Findlay Creek Elementary School not opening as a Junior Kindergarten to Grade 8 school?**

*A – The OCDSB will be opening the New Riverside South Secondary School in September 2025. This school will offer Grades 7 to 12. All students who reside within the Vimy Ridge Public School attendance boundary and New Findlay Creek Elementary School attendance boundary will feed*

*to the secondary school upon completion of Grade 6. In September 2025, those Grade 7 and 8 students attending Vimy Ridge Public School will be block moved to the new secondary school.*

**Q – What is the accommodation plan for those students currently attending Robert Bateman Public School and Roberta Bondar Public School as a result of the interim measures implemented as of January 1<sup>st</sup>, 2023?**

*A – Staff anticipate that those students currently holding at Robert Bateman Public School will be repatriated to their home school for September 2024. Staff are seeking input on providing those current Grade 5's attending Robert Bateman Public School as a result of the interim measures the option to remain at that school for Grade 6, or simply sending all students back to their home school.*

*For those current Grade 7's attending Roberta Bondar Public School as a result of the interim measures, staff are seeking input on providing those students a one-time option to remain at Roberta Bondar Public School or to attend Vimy Ridge Public School for Grade 8 in September 2024.*

**Q – How would the naming of the New Findlay Creek Elementary School be determined?**

*A - The OCDSB has a policy and procedure which outlines key elements to be followed in the process of naming a new school. The Superintendent of Instruction would establish a School Naming Task Force for the new school, and would ultimately recommend an appropriate name.*

*The School Naming Task Force (comprised of a number of representatives) would recommend a proposed name to Senior Staff at the Board, along with a list of alternative names. They would in turn provide a recommendation report to the appropriate Board Standing Committee for review and discussion. The report which includes a proposed name and possible alternatives would include background information for the consideration of the Board of Trustees.*

