

# NEW FINDLAY CREEK ELEMENTARY SCHOOL STUDY

Opening Grade Structure, Program Offering,  
Attendance Boundary, and  
Other Related Changes



## Working Group Meeting #1

### Information Package

Wednesday, October 18, 2023  
7:00 to 9:00 pm

Library  
Vimy Ridge Public School  
4180 Kelly Farm Drive, Gloucester, ON K1T 4J2





---

---

## Table of Contents

	Page
1. Introduction and Background	1
2. Planning Considerations	1-2
3. Study Objectives	2
4. The Working Group	2-3
5. Consultative Process and Next Steps	3-4
6. Study Timeline	5
7. General Location Map of Study Area	6
8. Vimy Ridge Public School – Attendance Boundary	7
9. Status Quo Enrolment Projections	8-13
10. Estimate of Total Dwelling Units – Leitrim/Findlay Creek	14
11. New Findlay Creek Elementary School – Proposed Attendance Boundary	15
12. Historical Data – New Findlay Creek ES Proposed Attendance Area	16-19
13. Vimy Ridge Public School – Proposed Revised Attendance Boundary	20
14. Historical Data – Vimy Ridge PS Proposed Revised Attendance Area	21-24
15. 2024-2028 Projected Enrolments- New Findlay Creek and Study Area Schools	25-29
<b>16. Additional Information</b>	<b>31</b>
Vimy Ridge PS Historical Enrolment Information	32
Robert Bateman PS Attendance Boundary	33
Roberta Bondar PS Attendance Boundary	34
Report #23-061 – New Findlay Creek Elementary School Study	35-38



## **Introduction and Background**

This study has been initiated in order to set the attendance boundary, opening grade structure, and program offering for a future new Ottawa-Carleton District School Board (OCDSB) elementary school to be opened in the Findlay Creek development area of Leitrim.

The need for a new elementary school in the development area was first identified in the City of Ottawa's Findlay Creek Community Design Plan (CDP). In total the CDP process resulted in the identification of a requirement for two future elementary school sites. One of those sites is currently operating – Vimy Ridge Public School, which opened in September 2017. As of 31 October 2022, Vimy Ridge PS was operating at a utilization rate of 169% with 23 portables on site. Unofficial enrolment at the start of the 2023 school year has shown a decline in the total number of students.

In April 2022, funding for the new school was announced by the Ministry of Education. The 2.55 ha (6.3 acre) site is located at 820 Miikana Rd, at the southeast intersection of Kelly Farm Drive and Miikana Road. The scheduled opening date of the new school is September 2024.

The completion of this study will confirm the new school's program offering and attendance boundary, as well as the opening grade structure.

## **Planning Considerations**

Findlay Creek is a rapidly developing residential area expected to contain approximately 11,000 new homes at full build-out. The second elementary school to be opened is the final of two planned schools for the OCDSB in the community.

Current Kindergarten to Grade 8 students residing in Findlay Creek are directed to Vimy Ridge Public School for the English with Core French and Early French Immersion programs. The school is located at 4180 Kelly Farm Drive in Findlay Creek. In addition to serving students in the Findlay Creek area, the school's attendance boundary area also includes areas extending west to Limebank Road, North of Rideau Road, and South of Leitrim Road.

As a result of being the only OCDSB school in the community, Vimy Ridge Public School is experiencing significant enrolment pressures. For the start of the 2023 school year, the school currently requires the use of 21 portable classrooms on site and is

accommodating approximately 985 students in a facility with a pupil capacity of 674 students. Enrolment at the school and the need for additional instructional space is expected to continue to grow as the neighborhood continues to develop.

It should be noted that the New Riverside South Secondary School is anticipated to open in September of 2025. The opening grade structure, attendance boundary, and program offering was approved by Board in September 2023. As a result, Vimy Ridge Public School's grade structure will be reduced to Kindergarten to Grade 6 in September 2025, easing some of the accommodation pressures on the school.

As a result of the continued pressures at Vimy Ridge Public School, an interim accommodation measure has been in place until the new Findlay Creek Elementary School is open and operating. As per report 22-037, new students moving into the Vimy Ridge PS attendance boundary area as of January 1<sup>st</sup>, 2023 and beyond are currently being directed to Robert Bateman Public School for Kindergarten to Grade 6 English with Core French and Early French Immersion programs, and to Roberta Bondar Public School for Grades 7 and 8 English with Core French and Early French Immersion programs.

As indicated earlier, there are two elementary school sites identified for the OCDSB within the Leitrim CDP area. The map found on Page 6 of the package identifies the locations for Vimy Ridge PS and the New Findlay Creek ES site, which is currently under construction.

### **Study Objectives**

The study's objective is to gain Board approval for the setting of an attendance boundary, opening grade structure and program offering for the new Findlay Creek Elementary School.

In doing so, we should ensure that we create attendance boundaries which make sense from a longer-term planning perspective, have regard for intermediate and secondary student feeding patterns, and account for future new schools.

### **The Working Group**

The working group is to be comprised of Board staff and two representatives from each of the following study schools:

- Vimy Ridge Public School;

- Robert Bateman Public School; and
- Roberta Bondar Public School.

Should it be necessary, representation on the working group from other local area schools may be sought.

Representatives from local community associations will also be invited to sit on the working group. The trustee (s) for the area will be notified and invited to attend all working group meetings.

The working group's role will be to provide localized input and advice to planning staff with regard to the preparation and evaluation of options, community alignments, and parental and family preferences as they relate to student movement.

Representatives will also update their school councils and organizations regarding the study process and the direction it is taking, and in some cases request feedback on specific areas of discussion.

### **Consultative Process and Next Steps**

The working group will meet on a number of occasions throughout the fall of 2023 and at local area schools. The goal of the working group will be to come to a consensus regarding proposed options which could then be presented at a Public Consultation Meeting currently scheduled to take place in December 2023.

These options will address key study objectives and any relevant associated issues.

The purpose of the Public Consultation Meeting is to receive input from affected school communities and members of the public with regard to the presented proposals. Parents and community members will be encouraged to provide input at the meeting held that evening, however, feedback is appreciated and valued throughout the entire consultative process.

Once input from the community is reviewed, planning staff will prepare a recommendation report scheduled to go to the Board's Committee of the Whole in January 2023. That meeting will include an opportunity for delegations from the public and Trustee debate regarding staff's recommendations.

A final decision by the Board regarding the study is also currently scheduled to take place in January 2023.

Public comments and/or questions regarding the study may be sent in to the following:

**Email:** [NewFindlayCreekES2@ocdsb.ca](mailto:NewFindlayCreekES2@ocdsb.ca)

**Fax:** 613-820-6968

**Mail:** New Findlay Creek ES  
Planning Department  
133 Greenbank Road  
Ottawa ON  
K2H 6L3



---

## NEW FINDLAY CREEK ELEMENTARY SCHOOL STUDY TIMELINE

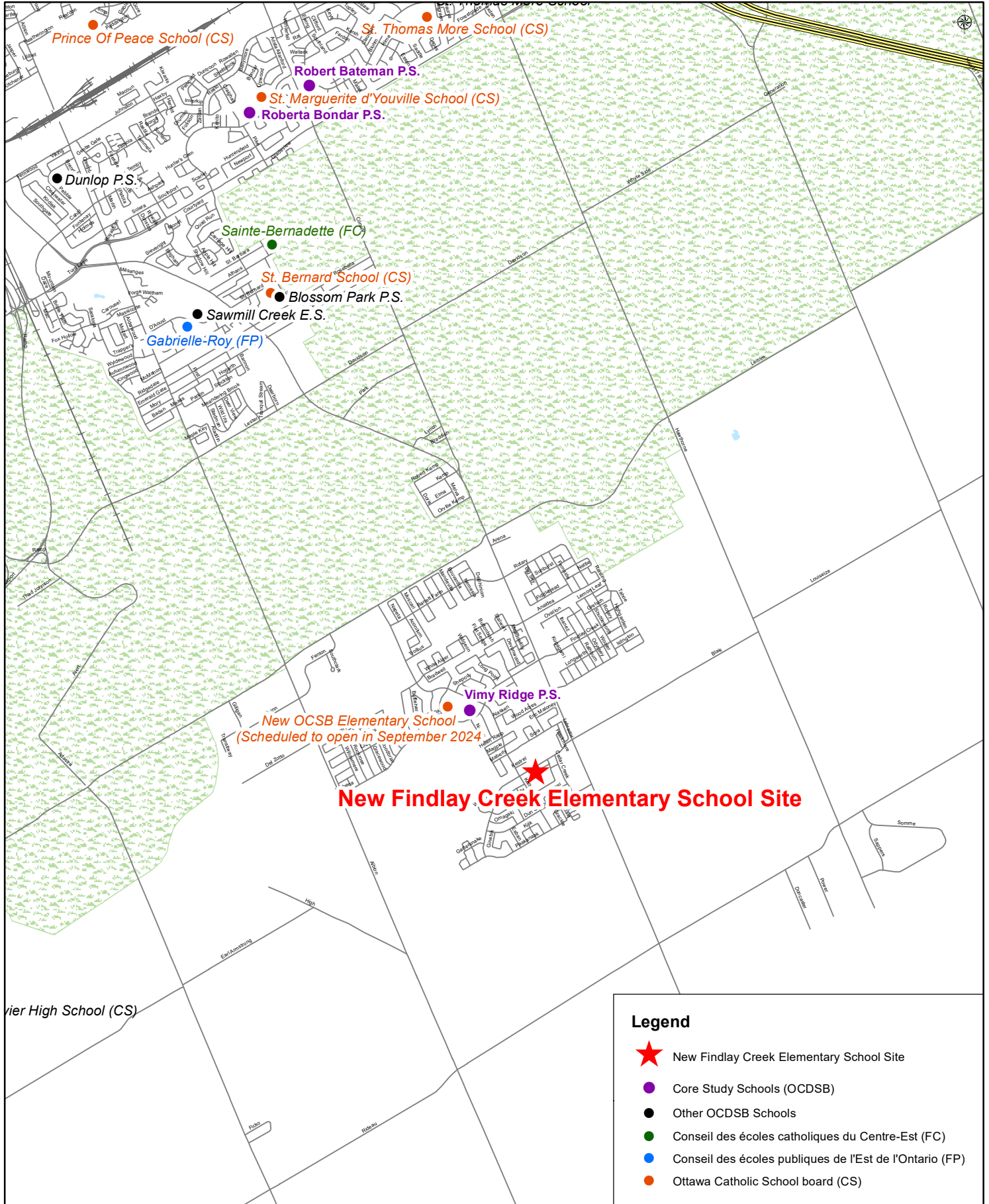
Activity	Date
<p><b>Notice of Intention to Commence Study and Approve Study and Timeline</b></p> <ul style="list-style-type: none"> <li>➤ Committee of the Whole Meeting</li> <li>➤ Board Approval of Study Consultation Plan and Timeline</li> </ul>	<p style="text-align: center;">September 2023</p> <p style="text-align: center;">September 2023</p>
<p><b>Consultative Stage</b></p> <ul style="list-style-type: none"> <li>➤ Formation of Working Group</li> <li>➤ Working Group Meeting #1</li> <li>➤ Working Group Meeting #2</li> <li>➤ Working Group Meeting #3 <i>(If required)</i></li> <li>➤ <b>Public Consultation Meeting</b></li> </ul>	<p style="text-align: center;">September 2023</p> <p style="text-align: center;">October 2023</p> <p style="text-align: center;">November 2023</p> <p style="text-align: center;">November 2023</p> <p style="text-align: center;">December 2023</p>
<p><b>Recommendation and Decision Making Stage</b></p> <ul style="list-style-type: none"> <li>➤ Regular Committee of the Whole Meeting – Presentation of Staff Recommendation Report</li> <li>➤ Regular Board Meeting – Final Study Decisions</li> </ul>	<p style="text-align: center;">January 2024</p> <p style="text-align: center;">January 2024</p>
<p><b>Communication and Implementation Stage</b></p> <ul style="list-style-type: none"> <li>➤ Communication of Board Approved Decision</li> <li>➤ Implementation of Board Approved Decision – School Opening</li> </ul>	<p style="text-align: center;">February 2024</p> <p style="text-align: center;">September 2024</p>

---



OTTAWA-CARLETON  
DISTRICT SCHOOL BOARD

# New Findlay Creek E.S. General Location Map

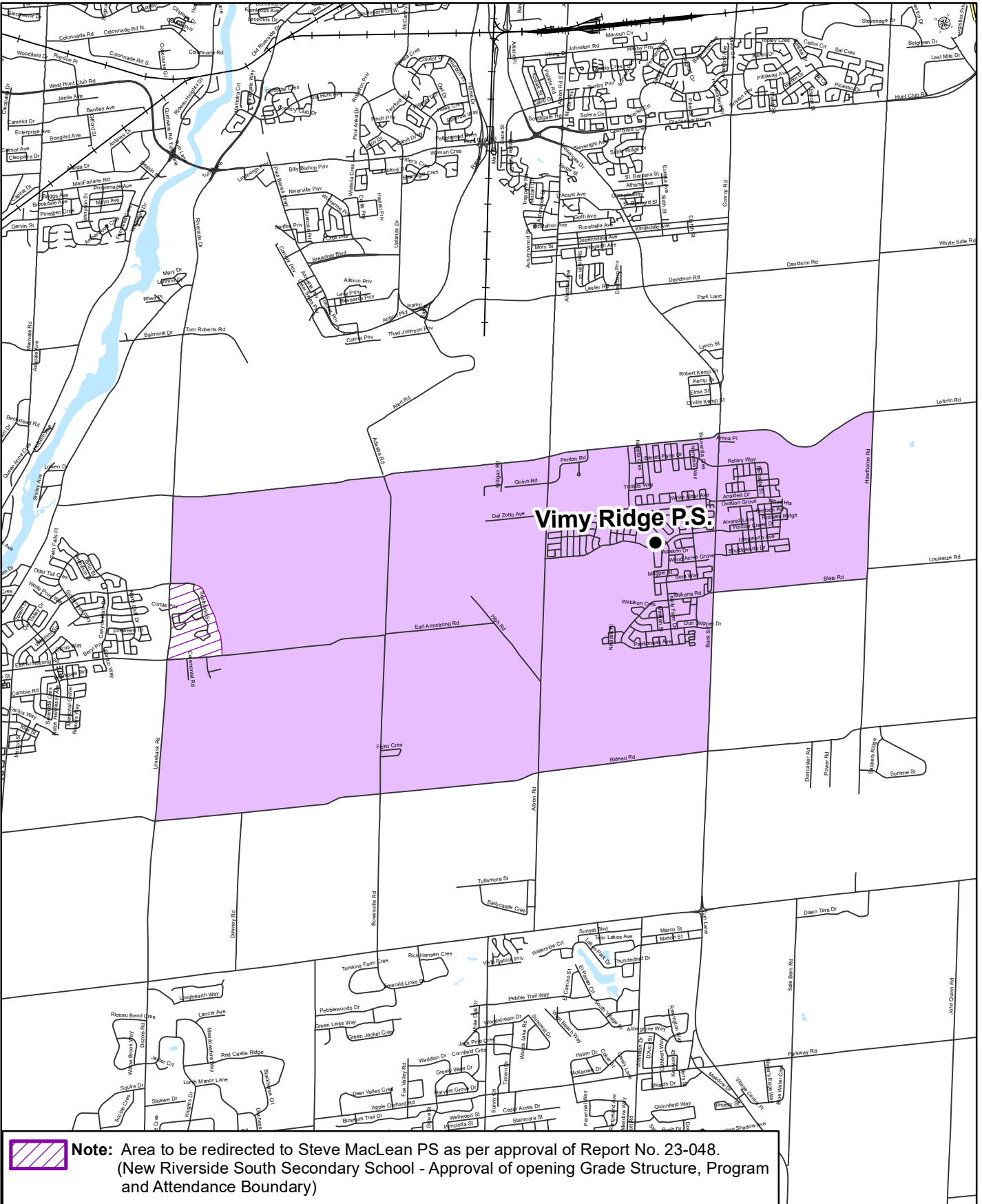




# VIMY RIDGE PUBLIC SCHOOL

Junior Kindergarten to Grade 8

English Program with Core French and Early French Immersion Attendance Boundary



## New Findlay Creek Elementary School Study

### 31 October 2022 Enrolments

School	Capacity	Portables	Program	JK	SK	1	2	3	4	5	6	7	8	SE	Total	UF(%)
Vimy Ridge PS	674	23	KGTN	135	125										260	170.8%
			ENG			45	50	53	54	60	61	42	48	17	430	
			EFI			104	78	75	62	51	42	25	24		461	
			Total	135	125	149	128	128	116	111	103	67	72	17	1151	
Robert Bateman PS	621	0	KGTN	33	27										60	42.0%
			ENG			16	10	7	14	15	19			9	90	
			EFI			26	21	15	19	16	14				111	
			Total	33	27	42	31	22	33	31	33			9	261	
Roberta Bondar PS	732	0	KGTN	42	57										99	90.0%
			ENG			10	14	19	9	9	25	54	61	20	221	
			EFI			37	51	39	41	36	26	53	56		339	
			Total	42	57	47	65	58	50	45	51	107	117	20	659	

*Utilization (UF%) = Total enrolment/capacity.*

*Programs: ENG = English Program with Core French, EFI = Early French Immersion, SE = Special Education*

*Portable numbers reflect those required for instruction as of fall 2022.*

## New Findlay Creek Elementary School Study

### 30 September 2023 Enrolments

School	Capacity	Portables	Program	JK	SK	1	2	3	4	5	6	7	8	SE	Total	UF(%)
Vimy Ridge PS	674	21	KGTN	87	114										201	146.3%
			ENG			24	45	46	51	45	46	39	31	18	345	
			EFI			79	76	69	65	59	45	25	22		440	
			Total	87	114	103	121	115	116	104	91	64	53	18	986	
Robert Bateman PS	621	0	KGTN	37	46										83	55.7%
			ENG			12	25	20	17	24	21			10	129	
			EFI			26	27	22	19	25	15				134	
			Total	37	46	38	52	42	36	49	36			10	346	
Roberta Bondar PS	732	0	KGTN	52	44										96	88.1%
			ENG			14	13	17	24	11	14	57	63	20	233	
			EFI			42	35	44	30	32	36	45	52		316	
			Total	52	44	56	48	61	54	43	50	102	115	20	645	

*Utilization (UF%) = Total enrolment/capacity.*

*Programs: ENG = English Program with Core French, EFI = Early French Immersion, SE = Special Education*

## New Findlay Creek Elementary School Study

### 2024 Projected Enrolments

School	Capacity	Program	JK	SK	1	2	3	4	5	6	7	8	SE	Total	UF(%)
Vimy Ridge PS	674	KGTN	120	94										214	157.3%
		ENG			29	36	58	52	60	50	22	40	18	365	
		EFI			101	73	71	66	64	61	22	23		481	
		Total	120	94	130	109	129	118	124	111	44	63	18	1060	
Robert Bateman PS	621	KGTN	23	36										59	47.3%
		ENG			17	13	20	19	14	22			9	114	
		EFI			34	16	21	18	13	19				121	
		Total	23	36	51	29	41	37	27	41			9	294	
Roberta Bondar PS	732	KGTN	50	42										92	86.1%
		ENG			7	20	22	19	22	10	38	72	20	230	
		EFI			40	40	31	42	32	37	48	38		308	
		Total	50	42	47	60	53	61	54	47	86	110	20	630	

*Utilization (UF%) = Total enrolment/capacity.*

*Programs: ENG = English Program with Core French, EFI = Early French Immersion, SE = Special Education*

## New Findlay Creek Elementary School Study

### 2025 Projected Enrolments

School	Capacity	Program	JK	SK	1	2	3	4	5	6	7	8	SE	Total	UF(%)
Vimy Ridge PS	674	KGTN	137	130										267	157.3%
		ENG			24	44	47	66	61	70			18	330	
		EFI			99	93	68	70	66	67				463	
		Total	137	130	123	137	115	136	127	137			18	1060	
Robert Bateman PS	621	KGTN	26	26										52	44.1%
		ENG			12	15	12	22	19	16			8	104	
		EFI			25	27	15	19	18	14				118	
		Total	26	26	37	42	27	41	37	30			8	274	
Roberta Bondar PS	732	KGTN	43	54										97	86.7%
		ENG			7	13	27	23	21	23	61	41	20	236	
		EFI			37	37	36	27	38	31	48	48		302	
		Total	43	54	44	50	63	50	59	54	109	89	20	635	

*Utilization (UF%) = Total enrolment/capacity.*

*Programs: ENG = English Program with Core French, EFI = Early French Immersion, SE = Special Education*

*Note: Riverside South Secondary School scheduled opening in September 2025 - block move of Grades 7-8 from Vimy Ridge PS.*

## New Findlay Creek Elementary School Study

### 2026 Projected Enrolments

School	Capacity	Program	JK	SK	1	2	3	4	5	6	7	8	SE	Total	UF(%)
Vimy Ridge PS	674	KGTN	140	148										288	166.9%
		ENG			33	35	56	52	77	71			17	341	
		EFI			114	91	87	67	69	68				496	
		Total	140	148	147	126	143	119	146	139			17	1125	
Robert Bateman PS	621	KGTN	26	30										56	43.2%
		ENG			9	11	13	13	22	22			9	99	
		EFI			18	20	25	13	19	18				113	
		Total	26	30	27	31	38	26	41	40			9	268	
Roberta Bondar PS	732	KGTN	45	46										91	86.6%
		ENG			9	11	16	28	25	22	55	66	20	252	
		EFI			47	34	33	32	25	37	35	48		291	
		Total	45	46	56	45	49	60	50	59	90	114	20	634	

*Utilization (UF%) = Total enrolment/capacity.*

*Programs: ENG = English Program with Core French, EFI = Early French Immersion, SE = Special Education*



## New Findlay Creek Elementary School Study

### 2027 Projected Enrolments

School	Capacity	Program	JK	SK	1	2	3	4	5	6	7	8	SE	Total	UF(%)
Vimy Ridge PS	674	KGTN	144	152										296	178.3%
		ENG			38	49	46	63	63	88			17	364	
		EFI			127	105	85	85	67	73				542	
		Total	144	152	165	154	131	148	130	161			17	1202	
Robert Bateman PS	621	KGTN	26	29										55	40.6%
		ENG			10	8	10	15	13	26			9	91	
		EFI			20	14	18	22	13	19				106	
		Total	26	29	30	22	28	37	26	45			9	252	
Roberta Bondar PS	732	KGTN	45	49										94	84.4%
		ENG			7	15	15	17	30	27	60	59	20	250	
		EFI			40	43	30	29	29	24	44	35		274	
		Total	45	49	47	58	45	46	59	51	104	94	20	618	

*Utilization (UF%) = Total enrolment/capacity.*

*Programs: ENG = English Program with Core French, EFI = Early French Immersion, SE = Special Education*

**Estimate of Total Dwelling Units, 2011 to 2022**

Traffic Zone	Total Units Year End 2011	Net New Units											Total Units Year End 2022	mid yr 2022
		2012	2013	2014	2015	2016	2017	2018	2019	2020	2021	2022		
4001	345	190	202	116	17	14	8	1	0	0	0	0	893	0
4002	1,101	192	48	114	26	18	38	127	516	434	392	349	3,355	214
4003	317	0	-2	121	73	135	175	293	128	242	298	220	2,000	104
4010	166	2	3	1	-1	3	12	3	1	4	2	0	196	0
Total Leitrim	1,929	384	251	352	115	170	233	424	645	680	692	569	6,444	318
	<i>+/-</i>		<i>-133</i>	<i>101</i>	<i>-237</i>	<i>55</i>	<i>63</i>	<i>191</i>	<i>221</i>	<i>35</i>	<i>12</i>	<i>-123</i>		
<b>Total Numb</b>	<b>1,929</b>	<b>2,313</b>	<b>2,564</b>	<b>2,916</b>	<b>3,031</b>	<b>3,201</b>	<b>3,434</b>	<b>3,858</b>	<b>4,503</b>	<b>5,183</b>	<b>5,875</b>	<b>6,444</b>		



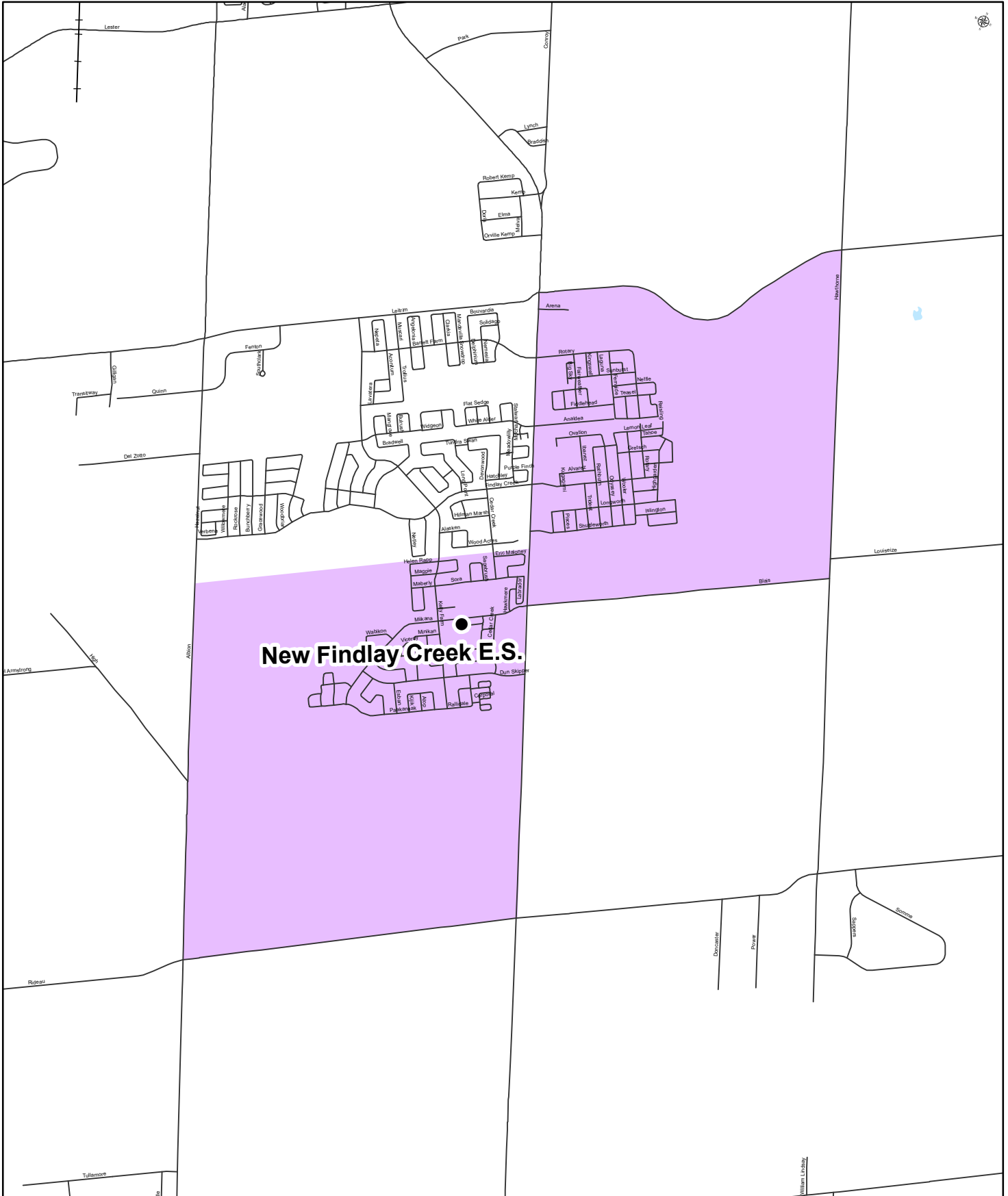
# New Findlay Creek Elementary School

## Proposed Attendance Boundary

### Junior Kindergarten to Grade 6

OTTAWA-CARLETON  
DISTRICT SCHOOL BOARD

### English Program with Core French and Early French Immersion Attendance Boundary



**Student Counts by Grade of Where Study Area Residents Attend**

Study Area: NEW Findlay Creek ES #2

Year: 2022-23

**Program: Regular**

Students Included:

Schools of Attendance : Vimy Ridge PS

School of Attendance	Enrolment														Subtotal s JK-8
	JK	SK	1	2	3	4	5	6	7	8	9	10	11	12	
Vimy Ridge PS	26	23	2	6	9	4	3	4	7	4					88
2018-19	33	30	4	6	7	16	9	5	7	12					129
2019-20	38	39	6	11	11	13	18	10	6	15					167
2020-21	49	63	12	18	15	15	17	24	13	9					235
2021-22	67	62	24	24	27	26	16	27	20	21					314
2022-23															

**Totals by Grade**

2018-19	26	23	2	6	9	4	3	4	7	4					88
2019-20	33	30	4	6	7	16	9	5	7	12					129
2020-21	38	39	6	11	11	13	18	10	6	15					167
2021-22	49	63	12	18	15	15	17	24	13	9					235
2022-23	67	62	24	24	27	26	16	27	20	21					314

**Student Counts by Grade of Where Study Area Residents Attend**

Study Area: NEW Findlay Creek ES #2

Year: 2022-23

Program: Board

Students Included:

Schools of Attendance : Vimy Ridge PS

School of Attendance Vimy Ridge PS	Enrolment													Subtotal s	
	JK	SK	1	2	3	4	5	6	7	8	9	10	11	12	JK-8
2018-19			9	8	10	1	8	3	2	2					43
2019-20			22	12	10	14	2	11	6	2					79
2020-21			31	20	9	14	16	3	9	7					109
2021-22			35	31	22	12	12	18	7	9					146
2022-23			48	31	30	23	14	14	13	8					181

**Totals by Grade**

2018-19			9	8	10	1	8	3	2	2					43
2019-20			22	12	10	14	2	11	6	2					79
2020-21			31	20	9	14	16	3	9	7					109
2021-22			35	31	22	12	12	18	7	9					146
2022-23			48	31	30	23	14	14	13	8					181

**Student Counts by Grade of Where Study Area Residents Attend**

Study Area: NEW Findlay Creek ES #2

Year: 2022-23

**Program: Congregated Special Ed.**

Students Included:

Schools of Attendance : Vimy Ridge PS

School of Attendance	Enrolment													Subtotal s JK-8		
	JK	SK	1	2	3	4	5	6	7	8	9	10	11		12	
<b>Vimy Ridge PS</b>								1								1
2018-19								1								1
2019-20									1							1
2020-21							1		1							2
2021-22								1								1
2022-23																0
<b>Totals by Grade</b>								1		1						1
2018-19								1								1
2019-20									1							1
2020-21							1		1							2
2021-22								1								1
2022-23																0

**Student Counts by Grade of Where Study Area Residents Attend**

Study Area: NEW Findlay Creek ES #2

Year: 2022-23

Program: Sum of all Programs

Students Included:

Schools of Attendance : Vimy Ridge PS

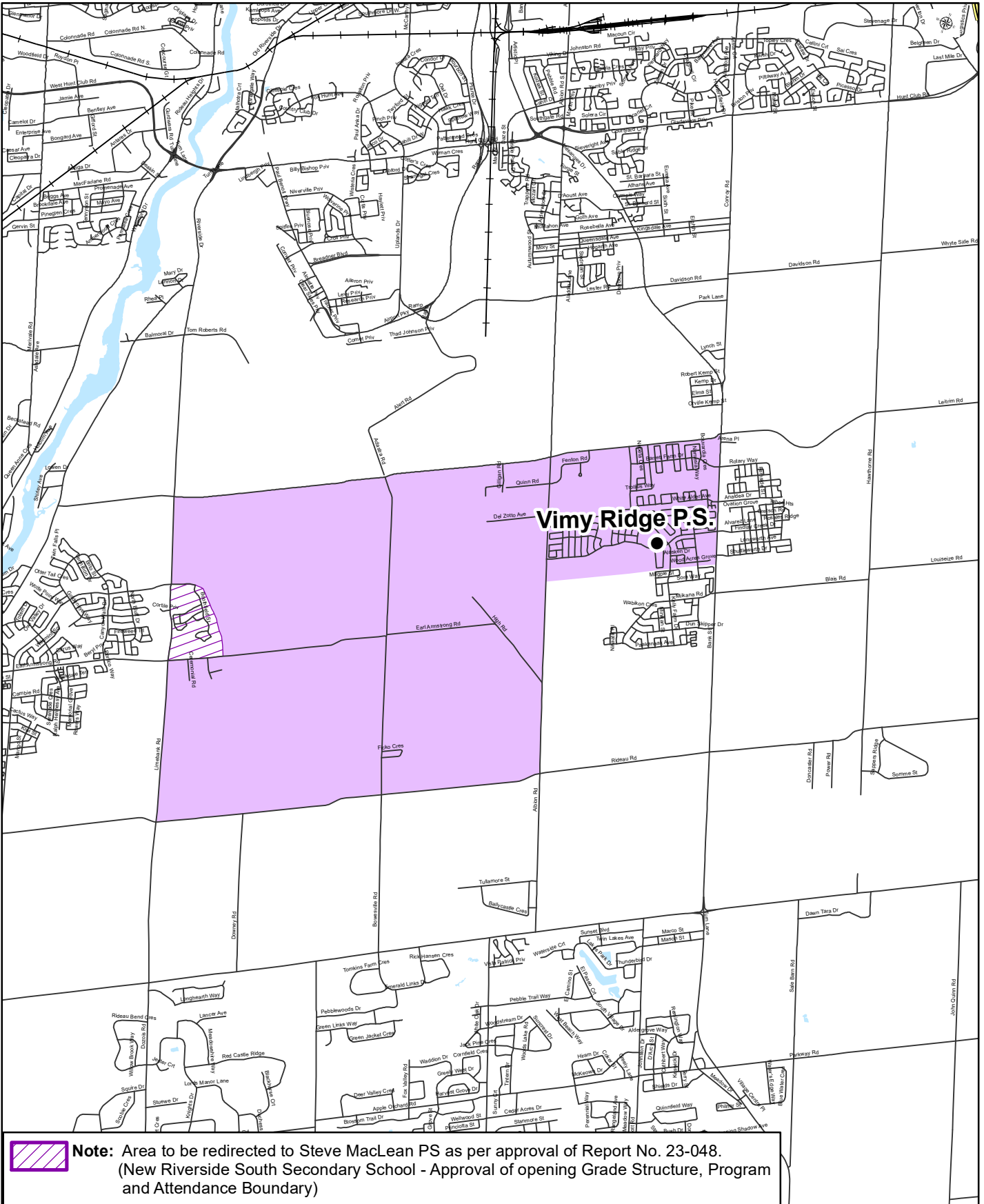
School of Attendance	Enrolment													Subtotal s		
	JK	SK	1	2	3	4	5	6	7	8	9	10	11		12	JK-8
Vimy Ridge PS	2018-19	26	23	11	14	19	5	11	8	9	6					132
	2019-20	33	30	26	18	17	30	11	16	14	14					209
	2020-21	38	39	37	31	20	27	35	13	16	22					278
	2021-22	49	63	47	49	37	27	29	43	20	18					382
	2022-23	67	62	72	55	57	49	30	41	33	29					495
<b>Totals by Grade</b>																
2018-19	26	23	11	14	19	5	11	8	9	6						132
2019-20	33	30	26	18	17	30	11	16	14	14						209
2020-21	38	39	37	31	20	27	35	13	16	22						278
2021-22	49	63	47	49	37	27	29	43	20	18						382
2022-23	67	62	72	55	57	49	30	41	33	29						495



# VIMY RIDGE PUBLIC SCHOOL - Proposed Attendance Boundary

## Junior Kindergarten to Grade 8

### English Program with Core French and Early French Immersion Attendance Boundary





**Student Counts by Grade of Where Study Area Residents Attend**

Study Area: Vimy Ridge PS - Reduced Boundary

Year: 2022-23

Program: Regular

Students Included:

Schools of Attendance : Vimy Ridge PS

School of Attendance Vimy Ridge PS	Enrolment													Subtotal s	
	JK	SK	1	2	3	4	5	6	7	8	9	10	11	12	JK-8
2018-19	66	59	9	15	14	19	22	24	21	14					263
2019-20	66	61	12	16	21	17	21	23	22	20					279
2020-21	60	67	10	18	28	18	25	25	26	26					303
2021-22	63	67	19	24	28	34	26	36	26	24					347
2022-23	66	62	18	23	21	28	35	30	21	24					328

**Totals by Grade**

2018-19	66	59	9	15	14	19	22	24	21	14					263
2019-20	66	61	12	16	21	17	21	23	22	20					279
2020-21	60	67	10	18	28	18	25	25	26	26					303
2021-22	63	67	19	24	28	34	26	36	26	24					347
2022-23	66	62	18	23	21	28	35	30	21	24					328

**Student Counts by Grade of Where Study Area Residents Attend**

Study Area: Vimy Ridge PS - Reduced Boundary

Year: 2022-23

Program: Board

Students Included:

Schools of Attendance : Vimy Ridge PS

School of Attendance	Enrolment													Subtotal s JK-8	
	JK	SK	1	2	3	4	5	6	7	8	9	10	11		12
Vimy Ridge PS			37	28	34	21	28	21	16	13					198
2018-19			44	33	26	26	21	29	21	17					217
2019-20			55	39	35	27	22	19	23	18					238
2020-21			54	54	41	34	27	21	16	21					268
2021-22			52	44	42	37	34	25	11	12					257
2022-23															
<b>Totals by Grade</b>			37	28	34	21	28	21	16	13					198
2018-19			44	33	26	26	21	29	21	17					217
2019-20			55	39	35	27	22	19	23	18					238
2020-21			54	54	41	34	27	21	16	21					268
2021-22			52	44	42	37	34	25	11	12					257
2022-23															

**Student Counts by Grade of Where Study Area Residents Attend**

Study Area: Vimy Ridge PS - Reduced Boundary

Year: 2022-23

Program: Congregated Special Ed.

Students Included:

Schools of Attendance : Vimy Ridge PS

School of Attendance	Enrolment													Subtotal	
	JK	SK	1	2	3	4	5	6	7	8	9	10	11	12	JK-8
Vimy Ridge PS	2018-19							1							1
	2019-20								3						3
	2020-21								1	1					2
	2021-22								1	1					2
	2022-23								1	1	1				3
<b>Totals by Grade</b>	2018-19							1							1
2019-20									3						3
2020-21									1	1					2
2021-22									1	1					2
2022-23									1	1	1				3

**Student Counts by Grade of Where Study Area Residents Attend**

Study Area: Vimy Ridge PS - Reduced Boundary

Year: 2022-23

Program: Sum of all Programs

Students Included:

Schools of Attendance : Vimy Ridge PS

School of Attendance	Enrolment														Subtotal s JK-8
	JK	SK	1	2	3	4	5	6	7	8	9	10	11	12	
<b>Vimy Ridge PS</b>															
2018-19	66	59	46	43	48	40	51	45	37	27					462
2019-20	66	61	56	49	47	43	42	55	43	37					499
2020-21	60	67	65	57	63	45	47	45	50	44					543
2021-22	63	67	73	78	69	68	53	58	43	45					617
2022-23	66	62	70	67	63	65	69	56	33	37					588
<b>Totals by Grade</b>															
2018-19	66	59	46	43	48	40	51	45	37	27					462
2019-20	66	61	56	49	47	43	42	55	43	37					499
2020-21	60	67	65	57	63	45	47	45	50	44					543
2021-22	63	67	73	78	69	68	53	58	43	45					617
2022-23	66	62	70	67	63	65	69	56	33	37					588

## New Findlay Creek Elementary School Study

### 2024 Projected Enrolments

School	Capacity	Program	JK	SK	1	2	3	4	5	6	7	8	SE	Total	UF(%)
NEW Findlay Creek ES	674	KGTN	60	52										112	58.5%
		ENG			15	15	31	29	25					115	
		EFI			47	36	33	26	25					167	
		TOTAL	60	52	62	51	64	55	50					394	
Vimy Ridge PS	674	KGTN	60	42										102	98.7%
		ENG			14	21	26	23	35	50	22	40	18	249	
		EFI			54	36	38	41	39	61	22	23		314	
		Total	60	42	68	57	64	64	74	111	44	63	18	665	
Robert Bateman PS	621	KGTN	23	36										59	47.3%
		ENG			17	13	20	19	14	22			9	114	
		EFI			34	16	21	18	13	19				121	
		Total	23	36	51	29	41	37	27	41			9	294	
Roberta Bondar PS	732	KGTN	50	42										92	86.1%
		ENG			7	20	22	19	22	10	38	72	20	230	
		EFI			40	40	31	42	32	37	48	38		308	
		Total	50	42	47	60	53	61	54	47	86	110	20	630	

Utilization (UF%) = Total enrolment/capacity.

Programs: ENG = English Program with Core French, EFI = Early French Immersion, SE = Special Education

Note: New Findlay Creek ES opens as JK-5 to allow Grade 6's at Vimy Ridge PS to complete final year at their school.

**New Findlay Creek Elementary School Study**  
**2025 Projected Enrolments**

School	Capacity	Program	JK	SK	1	2	3	4	5	6	7	8	SE	Total	UF(%)
NEW Findlay Creek ES	674	KGTN	72	69										141	74.2%
		ENG			14	19	19	39	30	28				149	
		EFI			44	43	34	34	26	29				210	
		TOTAL	72	69	58	62	53	73	56	57				500	
Vimy Ridge PS	674	KGTN	65	61										126	82.9%
		ENG			10	25	28	27	31	43			18	182	
		EFI			55	49	34	35	40	38				251	
		Total	65	61	65	74	62	62	71	81			18	559	
Robert Bateman PS	621	KGTN	26	26										52	44.1%
		ENG			12	15	12	22	19	16			8	104	
		EFI			25	27	15	19	18	14				118	
		Total	26	26	37	42	27	41	37	30			8	274	
Roberta Bondar PS	732	KGTN	43	54										97	86.7%
		ENG			7	13	27	23	21	23	61	41	20	236	
		EFI			37	37	36	27	38	31	48	48		302	
		Total	43	54	44	50	63	50	59	54	109	89	20	635	

*Utilization (UF%) = Total enrolment/capacity.*

*Programs: ENG = English Program with Core French, EFI = Early French Immersion, SE = Special Education*

*Note: Riverside South Secondary School scheduled opening in September 2025 - block move of Grades 7-8 from Vimy Ridge PS;*

*Grade 6 phases into New Findlay Creek ES.*

## New Findlay Creek Elementary School Study

### 2026 Projected Enrolments

School	Capacity	Program	JK	SK	1	2	3	4	5	6	7	8	SE	Total	UF(%)
NEW Findlay Creek ES	674	KGTN	75	83										158	82.2%
		ENG			19	17	23	23	41	33				156	
		EFI			59	41	41	35	35	29				240	
		TOTAL	75	83	78	58	64	58	76	62				554	
Vimy Ridge PS	674	KGTN	65	66										131	85.2%
		ENG			15	18	33	29	36	38			18	187	
		EFI			55	50	46	31	35	39				256	
		Total	65	66	70	68	79	60	71	77			18	574	
Robert Bateman PS	621	KGTN	26	30										56	43.2%
		ENG			9	11	13	13	22	22			9	99	
		EFI			18	20	25	13	19	18				113	
		Total	26	30	27	31	38	26	41	40			9	268	
Roberta Bondar PS	732	KGTN	45	46										91	86.6%
		ENG			9	11	16	28	25	22	55	66	20	252	
		EFI			47	34	33	32	25	37	35	48		291	
		Total	45	46	56	45	49	60	50	59	90	114	20	634	

Utilization (UF%) = Total enrolment/capacity.

Programs: ENG = English Program with Core French, EFI = Early French Immersion, SE = Special Education

**New Findlay Creek Elementary School Study**  
**2027 Projected Enrolments**

School	Capacity	Program	JK	SK	1	2	3	4	5	6	7	8	SE	Total	UF(%)
NEW Findlay Creek ES	674	KGTN	77	86										163	90.7%
		ENG			22	23	22	29	25	45				166	
		EFI			70	55	39	43	36	39				282	
		TOTAL	77	86	92	78	61	72	61	84				611	
Vimy Ridge PS	674	KGTN	67	66										133	88.1%
		ENG			16	26	24	34	38	43			18	199	
		EFI			57	50	47	43	31	34				262	
		Total	67	66	73	76	71	77	69	77			18	594	
Robert Bateman PS	621	KGTN	26	29										55	40.6%
		ENG			10	8	10	15	13	26			9	91	
		EFI			20	14	18	22	13	19				106	
		Total	26	29	30	22	28	37	26	45			9	252	
Roberta Bondar PS	732	KGTN	45	49										94	84.4%
		ENG			7	15	15	17	30	27	60	59	20	250	
		EFI			40	43	30	29	29	24	44	35		274	
		Total	45	49	47	58	45	46	59	51	104	94	20	618	

*Utilization (UF%) = Total enrolment/capacity.*

*Programs: ENG = English Program with Core French, EFI = Early French Immersion, SE = Special Education*



**New Findlay Creek Elementary School Study**  
**2028 Projected Enrolments**

School	Capacity	Program	JK	SK	1	2	3	4	5	6	7	8	SE	Total	UF(%)
NEW Findlay Creek ES	674	KGTN	80	89										169	96.0%
		ENG			23	28	29	27	30	27				164	
		EFI			73	65	52	40	43	41				314	
		TOTAL	80	89	96	93	81	67	73	68				647	
Vimy Ridge PS	674	KGTN	67	68										135	91.5%
		ENG			16	28	34	24	45	46			18	211	
		EFI			57	52	47	43	42	30				271	
		Total	67	68	73	80	81	67	87	76			18	617	
Robert Bateman PS	621	KGTN	26	29										55	40.6%
		ENG			10	8	10	15	13	26			9	91	
		EFI			20	14	18	22	13	19				106	
		Total	26	29	30	22	28	37	26	45			9	252	
Roberta Bondar PS	732	KGTN	45	49										94	84.4%
		ENG			7	15	15	17	30	27	60	59	20	250	
		EFI			40	43	30	29	29	24	44	35		274	
		Total	45	49	47	58	45	46	59	51	104	94	20	618	

*Utilization (UF%) = Total enrolment/capacity.*

*Programs: ENG = English Program with Core French, EFI = Early French Immersion, SE = Special Education*



# **ADDITIONAL INFORMATION**

School: Vimy Ridge

## Historical Enrolment - All Programs

Year	JK	SK	1	2	3	4	5	6	7	8	Spec	JK/SK Total	1-6 Total	7&8 Total	TOTAL
2012															
2013															
2014															
2015															
2016															
2017	75	64	69	72	48	72	55	46	39	26	14	139	362	65	580
2018	99	85	68	74	75	54	70	62	50	47	15	184	403	97	699
2019	105	97	85	77	79	79	58	74	63	54	20	202	452	117	791
2020	101	112	109	91	91	85	85	63	69	75	23	213	524	144	904
2021	112	135	128	133	109	105	94	104	67	70	21	247	673	137	1078
2022	135	125	148	128	128	115	110	103	67	72	18	260	732	139	1149

## Historical Enrolment - Kindergarten

Year	JK	SK	1	2	3	4	5	6	7	8	Spec	JK/SK Total	1-6 Total	7&8 Total	TOTAL
2016															
2017	75	64										139			139
2018	99	85										184			184
2019	105	97										202			202
2020	101	112										213			213
2021	112	135										247			247
2022	135	125										260			260

## Historical Enrolment - English

Year	JK	SK	1	2	3	4	5	6	7	8	Spec	JK/SK Total	1-6 Total	7&8 Total	TOTAL
2012															
2013															
2014															
2015															
2016															
2017			24	23	24	35	29	23	21	20	14		158	41	213
2018			16	32	26	27	33	37	30	28	15		171	58	244
2019			16	26	38	36	32	33	35	33	20		181	68	269
2020			19	32	42	40	46	37	37	48	23		216	85	324
2021			34	44	45	55	51	64	41	39	21		394	80	394
2022			45	50	53	53	59	61	42	48	18		429	90	429

## Historical Enrolment - Early French Immersion

Year	JK	SK	1	2	3	4	5	6	7	8	Spec	JK/SK Total	1-6 Total	7&8 Total	TOTAL
2012															
2013															
2014															
2015															
2016															
2017			45	49	24	37	26	23	18	6			204	24	228
2018			52	42	49	27	37	25	20	19			232	39	271
2019			69	51	41	43	26	41	28	21			271	49	320
2020			90	59	49	45	39	26	32	27			308	59	367
2021			94	89	64	50	43	40	26	31			437	57	437
2022			103	78	75	62	51	42	25	24			460	49	460

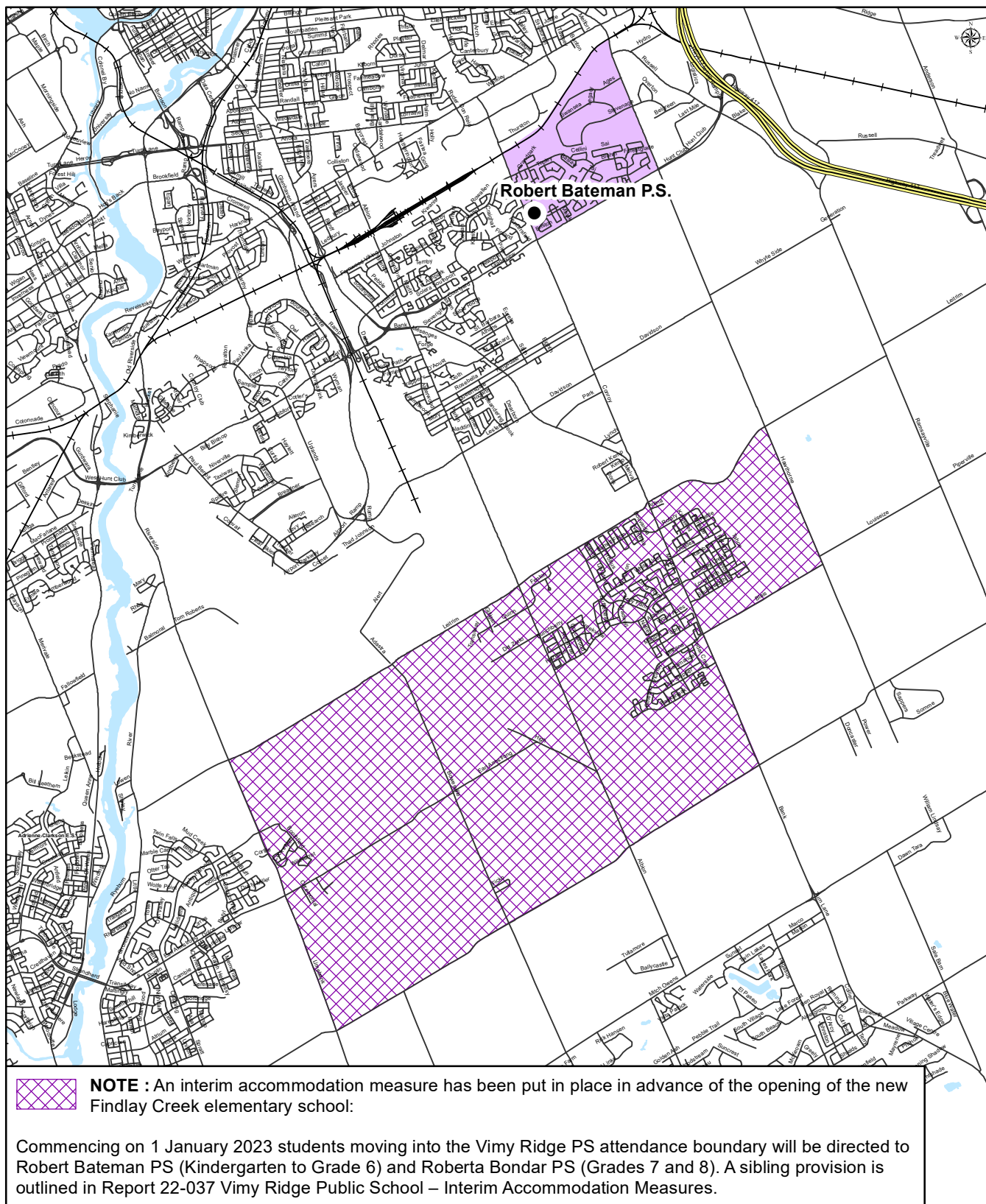


# ROBERT BATEMAN PUBLIC SCHOOL

Junior Kindergarten to Grade 6

OTTAWA-CARLETON  
DISTRICT SCHOOL BOARD

English Program with Core French and Early French Immersion Attendance Boundary



Robert Bateman Public School  
1250 Blohm Drive  
Ottawa, Ontario  
K1G 5R8  
(613) 737-3169

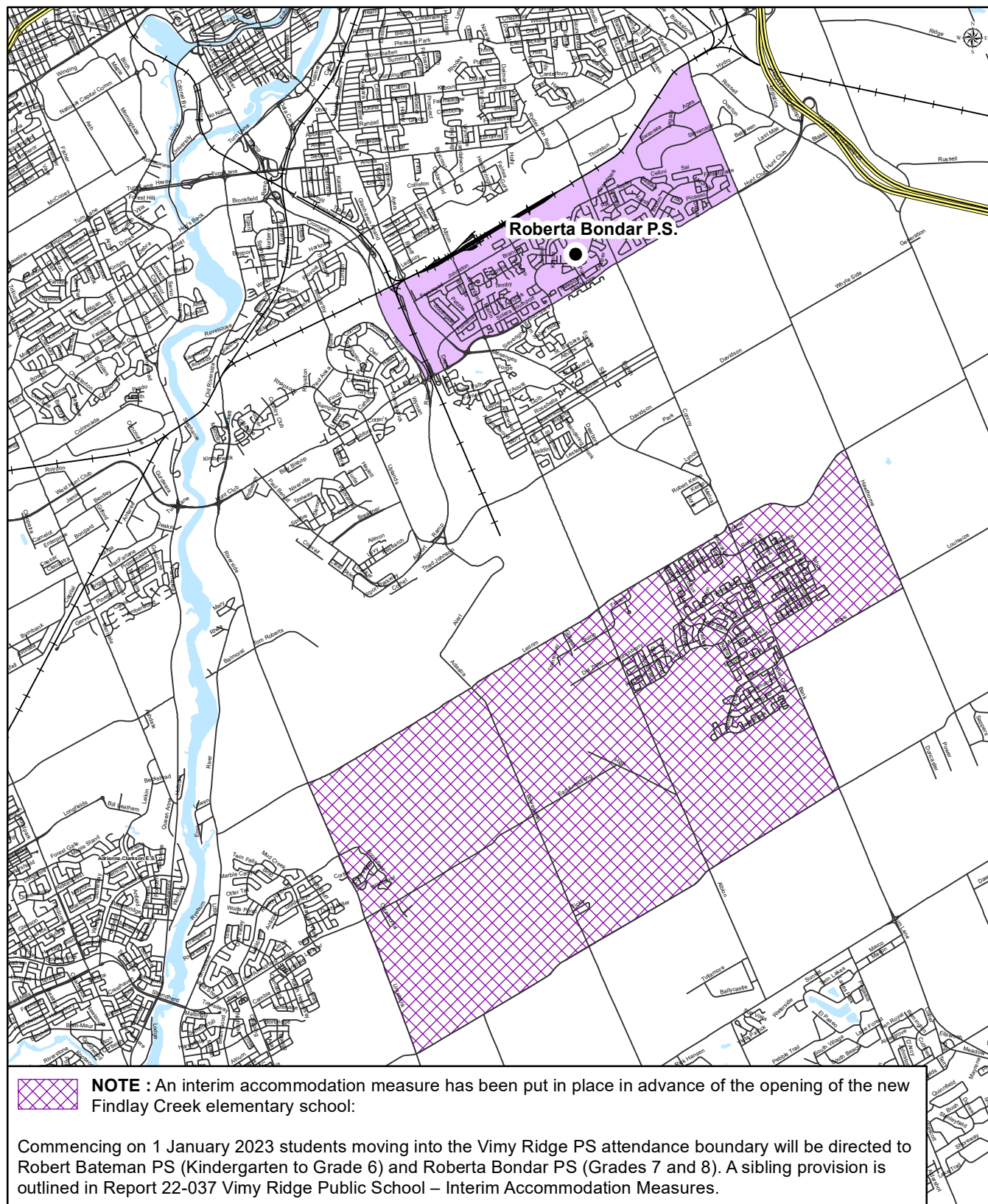
Map is for illustrative purposes only.  
For further information, visit [www.ocdsb.ca](http://www.ocdsb.ca)  
September 2023



# ROBERTA BONDAR PUBLIC SCHOOL

## Grade 7 to 8

English Program with Core French and Early French Immersion Attendance Boundary



Roberta Bondar Public School  
159 Lorry Greenberg Drive  
Ottawa, Ontario  
K1T 3J6  
(613) 736-7334

Map is for illustrative purposes only.  
For further information, visit [www.ocdsb.ca](http://www.ocdsb.ca)  
September 2023

**COMMITTEE OF THE WHOLE**  
**Report No. 23-061**

**12 September 2023**

**New Findlay Creek Elementary School Study – Consultation Plan Approval**

**Key Contact: Randall Gerrior, Associate Director, Business Operations 613-596-8211 ext. 8881**

**PURPOSE:**

1. To obtain Board approval of a consultation process and timeline to establish the opening grade structure, program offering, and attendance boundary for a future elementary school to be opened in the Findlay Creek community.

**CONTEXT:**

2. The Findlay Creek-Leitrim community is a rapidly growing development area within the City of Ottawa. By the end of 2022, there were approximately 6,400 homes built and occupied in the neighborhood. A significant number of building permits for new residential units have also been issued so far in 2023, and an additional 2,500 units are still expected to be constructed over the next several years.

The community is currently serviced by one elementary school, Vimy Ridge Public School (PS), which offers Kindergarten to Grade 8 English with Core French and Early French Immersion programs, and has a capacity of 674 students. Vimy Ridge PS opened in 2017 as the first of the two planned Ottawa-Carleton District School Board (OCDSB) elementary schools for the community. It remains the only public elementary school within the Findlay Creek Community serving local students.

Significant enrolment pressures exist at Vimy Ridge PS. As at 31 October 2022, enrolment at the school was 1,151, a utilization rate of 171%. The school is currently operating with 23 portables on site which is the absolute maximum that can be placed.

The need for a second 674 pupil place elementary school within the Findlay Creek Community was first identified as a capital priority in 2018. In April 2022, funding for the new school was announced by the Ministry of Education. The 2.55 ha (6.3 acre) site is located at 4501 Kelly Farm Drive, at the southeast intersection of Kelly Farm Drive and Miikana Road. Please refer to the general location map attached as Appendix A. The site was acquired on 22 October 2021.



As per Report No. 22-037, interim accommodation measures currently exist for Vimy Ridge PS area students. Until the new Findlay Creek Elementary School (ES) is open and operating, new students moving into the Vimy Ridge PS attendance boundary area as of 1 January 2023 and beyond are currently being directed to Robert Bateman Public School (PS) for Kindergarten to Grade 6 English with Core French and Early French Immersion programs, and to Roberta Bondar Public School (PS) for Grades 7 and 8 English with Core French and Early French Immersion programs.

Discussion regarding the future accommodation of those current students who are being redirected to Robert Bateman PS and Roberta Bondar PS who find their addresses in the to-be-amended Vimy Ridge PS attendance boundary and new Findlay Creek ES attendance boundary will take place as a result of this study.

The purpose of this study is to gain approval for the opening grade structure, program offering, and attendance boundary of the new Findlay Creek ES, which is anticipated to open and welcome new students by September 2024.

## **KEY CONSIDERATIONS:**

3. A general location map for the study area showing all school sites situated within Findlay Creek area is attached as Appendix A.

Vimy Ridge PS is located on Kelly Farm Drive in Findlay Creek. In addition to serving students in the Findlay Creek area, the school's attendance boundary area also includes areas extending west to Limebank Road, North of Rideau Road, and South of Leitrim Road (as outlined in Appendix B).

In fall 2020 capital funding for the construction of a grade 7 to 12 secondary school in Riverside South was approved by the Ministry of Education. The approved attendance boundary area will include the entire Vimy Ridge PS attendance boundary area, with the exception of a minor adjustment for the Boothfield Community, which will be redirected to Steve MacLean Public School (PS) upon approval of Report No. 23-048. Upon opening of the new Riverside South Secondary School, Vimy Ridge PS's grade structure will adjust to Kindergarten to Grade 6. Future students attending Vimy Ridge PS will feed to the new secondary school upon its opening.

To facilitate discussion, a preliminary attendance boundary for the new Findlay Creek ES has been included (attached as Appendix E). The preliminary attendance boundary includes a section of the currently existing Vimy Ridge PS attendance boundary. This attendance boundary is not final, however it will serve to stimulate discussion as part of the advisory group meetings and will be subject to revision over the course of the study.

This study does not qualify as a Pupil Accommodation Review (PAR) under Policy P.118.PLG Pupil Accommodation Review, and will include a different consultative process.



Policy P.118.PLG states that a PAR is not required when the Board is planning the relocation of grades or programs in which the enrolment constitutes less than 50% of the school's total enrolment. Staff does not foresee an attendance boundary for the new Findlay Creek ES which would result in the movement of more than 50% of a school's enrolment.

## **RESOURCE IMPLICATIONS:**

4. The cost of conducting the study will be managed within existing departmental budgets.

## **COMMUNICATION/CONSULTATION ISSUES:**

5. It is proposed that a working group will be formed in fall 2023 and that it will be comprised of District staff and two representatives from each study school.

In addition to impacting Vimy Ridge PS, the opening of a new elementary school in the Findlay Creek development area may affect enrolment at both Robert Bateman PS and Roberta Bondar PS as a result of temporary accommodation measures identified previously in this report.

Middle French Immersion program students residing within the Vimy Ridge PS attendance boundary area are directed to Blossom Park Public School (PS). It is not anticipated that the new Findlay Creek Elementary School will include a Middle French Immersion Program. Given this consultation with the Blossom Park PS community is not expected to be required as a part of this study.

It is therefore recommended that the working group include representatives from each of the above-mentioned schools: Vimy Ridge PS, Robert Bateman PS and Roberta Bondar PS.

Appendix C provides a snapshot of current enrolment and accommodation data for those schools which are expected to be included in the study process.

Local community associations will also be invited to provide a representative on the working group. Area trustees will be notified and invited to attend all working group meetings.

According to the recommended consultation plan, a study working group will meet on several occasions over the course of the fall 2023. Meetings have been preliminarily scheduled for the months of October and November 2023. Additional meetings of the working group may be convened should they be necessary.

A public consultation meeting is tentatively scheduled to be held within the local community in December 2023. Final decisions regarding the study are scheduled to be made by the Board in January 2024.

A detailed study consultation plan and timeline for the study is attached as Appendix D to this report.

## **STRATEGIC LINKS:**

6. The opening of a new elementary school within the developing Findlay Creek community will serve to provide students with improved access to learning environments and optimize the use of District resources. This is consistent with stewardship objectives of the 2023-2027 Strategic Plan.

## **RECOMMENDATION:**

THAT the New Findlay Creek Elementary School Study Consultation Plan and Timeline, attached as Appendix D to Report No. 23-061, be approved.

---

Randall Gerrior  
Associate Director, Business Operations

---

Pino Buffone  
Director of Education and  
Secretary of the Board

## **APPENDICES**

- Appendix A General Location Map – Study Area
- Appendix B School Attendance Boundary Map – Vimy Ridge Public School
- Appendix C Current Enrolment and Accommodation Chart
- Appendix D Study Consultation Plan and Timeline
- Appendix E Proposed Attendance Boundary – New Findlay Creek Elementary School