

STITTSVILLE SECONDARY SCHOOL STUDY

Opening Grade Structure, Program,
Attendance Boundary, and
Other Related Changes



Working Group Meeting #3

Information Package

9 March 2020
6:30 to 8:30 pm

Library
AY Jackson SS
150 Abbeyhill Drive, Kanata



Table of Contents

	Page
1. Study Objectives and Considerations.....	1
2. Two Potential Kindergarten to Grade 6 Attendance Boundary Revisions	2-3
• <i>Between Castlefrank ES/Katimavik ES and Stittsville PS</i>	
• <i>Between A. Lorne Cassidy ES and Stittsville PS</i>	
○ K to 6 ENG Redirection Options Map.....	4
○ K to 6 EFI Redirection Options Map.....	5
○ 4 to 6 MFI Previously Approved Redirection Map.....	6
○ Potential Areas for K to 6 Redirections Map.....	7
○ Kindergarten to Grade 6 Enrolment by Areas Chart.....	8-9
3. Input Received From Public After Working Group Meeting #2.....	10
4. An East-West Attendance Boundary for New Stittsville SS	11-12
• <i>Pros versus Cons</i>	
○ 7 to 8 ENG East-West Option Map.....	13
○ 7 to 8 EFI East-West Option Map.....	14
○ 7 to 8 MFI East-West Option Map.....	15
○ Secondary School East-West Option Map.....	16
○ Potential Areas for 7 to 12 Redirections Map.....	17
○ Grades 7 to 12 Enrolment by Areas Chart.....	18
5. Review Designated Schools for Fallowfield Village	19-20
• <i>As part of this study should consideration be given to reviewing the designated schools for Fallowfield Village?</i>	
○ K to 6 ENG Redirection Area Map.....	21
○ K to 6 EFI Redirection Area Map.....	22
○ 4 to 6 MFI Redirection Area Map.....	23
○ Number of OCDSB Students in Fallowfield Village Chart.....	24
○ Distance Chart from Fallowfield Village to Area Schools.....	25
6. Supplemental Information.....	26
• Working Option A – Summary & Secondary School Composite Map.....	27-28
• Working Option B – Summary & Secondary School Composite Map	29-30
• 31 October 2019 Enrolment.....	31
• Summary of Residential Permits and Enrolment by Study Planning Areas.....	32
• Study Planning Areas Maps.....	33-34
• Revised Study Timeline.....	35

Study Objectives

1. Determine an attendance boundary, program offering, and opening grade structure for the new Stittsville secondary school.
2. The creation of a set of attendance boundaries and programs for local schools which:
 - i) help to balance enrolments at local area schools;
 - ii) are logical and sustainable in the longer-term;
 - iii) align program feeding patterns;
 - iv) provide for viable student programming; and
 - v) account for future planning considerations such as the opening of additional schools in future years.
3. The examination of designated school directions for new and future residential development areas. Are there any boundary adjustments that should be considered to create more geographically logical attendance boundaries and/or better balance future enrolments between area schools?

Considerations

Capital Funding Strategy and Attendance Boundary Size

- *Should we set a smaller and more sustainable long-term attendance boundary for the new school which would result in only parts of the Stittsville area being directed to the new school; or*
- *Should we set a larger attendance boundary which would result in accommodation pressures earlier – these site pressures, however, would support a business case submission to the Ministry of Education in order to help secure capital funding to build a future addition at the New Stittsville SS, or the construction of a second area high school (Kanata West SS).*

A Family of Schools

- *Attendance boundary changes proposed in Option A and B would move towards creating a family of schools for the Stittsville area.*

At this time however, we are not able to fully align all area school attendance boundaries to make a Family of Schools. EFI students residing south of Fallowfield Road are currently directed to Stittsville area schools (A. Lorne Cassidy ES or Westwind PS) while ENG and MFI students are directed to Richmond PS. A future elementary school site has been reserved within the developing residential lands in the Village of Richmond. A new elementary school would provide the OCDSB with the opportunity to add a local EFI program in the Village of Richmond and revise existing EFI attendance boundaries and grade structures, potentially resulting in a more complete Family of Schools set-up for students in this part of the District.

Two Potential Kindergarten to Grade 6 Attendance Boundary Revisions

- 1. A kindergarten to grade 6 attendance boundary revision between Stittsville PS and Castlefrank ES /Katimavik ES - Carp River, Terry Fox Drive area.**
Would redirect students residing in approximately 1,825 future residential units located within the current Castlefrank ES/Katimavik ES/Earl of March SS attendance areas, to Stittsville PS/New Stittsville SS. This revision was discussed previously.

- 2. A kindergarten to grade 6 attendance boundary revision between A. Lorne Cassidy ES and Stittsville PS.** *Would redirect a portion of the students residing in existing and future residential units north of Hazeldean Road from Stittsville PS to A. Lorne Cassidy ES. There are over 3,000 future residential units expected within the current attendance boundary for Stittsville PS. This change could be phased in and a sibling provision considered.*

Factors to Consider:

If the grade 7 and 8 program at A. Lorne Cassidy ES were to be relocated to the New Stittsville Secondary School, it would result in additional available instructional space at A. Lorne Cassidy ES. In order to make best use of this surplus space, a kindergarten to grade 6 attendance boundary revision to increase enrolment at the school, and better balance new and future residential development areas could be considered.

Stittsville (including Fernbank) is the fastest growing development area in the City of Ottawa. Over the past three years the city has approved building permits for approximately 1,500 new residential units per year in this part of the District.

There are no large new residential development areas within the current A. Lorne Cassidy ES attendance boundary. Most of the new residential development located north of Hazeldean Road is directed to Stittsville PS.

Approximately a third of the Fernbank Community Design Plan (CDP) lands are located within the attendance boundary for Westwind PS. The remainder are to be directed to the new Fernbank ES upon its opening.

In the past, input received from the A. Lorne Cassidy ES school council expressed interest in expanding the school's attendance boundary to include more future residential development areas (for example, the Potter's Key subdivision area).

An attendance boundary revision between A. Lorne Cassidy ES and Stittsville PS could help to better balance enrolment and accommodation between the two schools in future years. This change would result in an increase in enrolment for A. Lorne Cassidy ES.

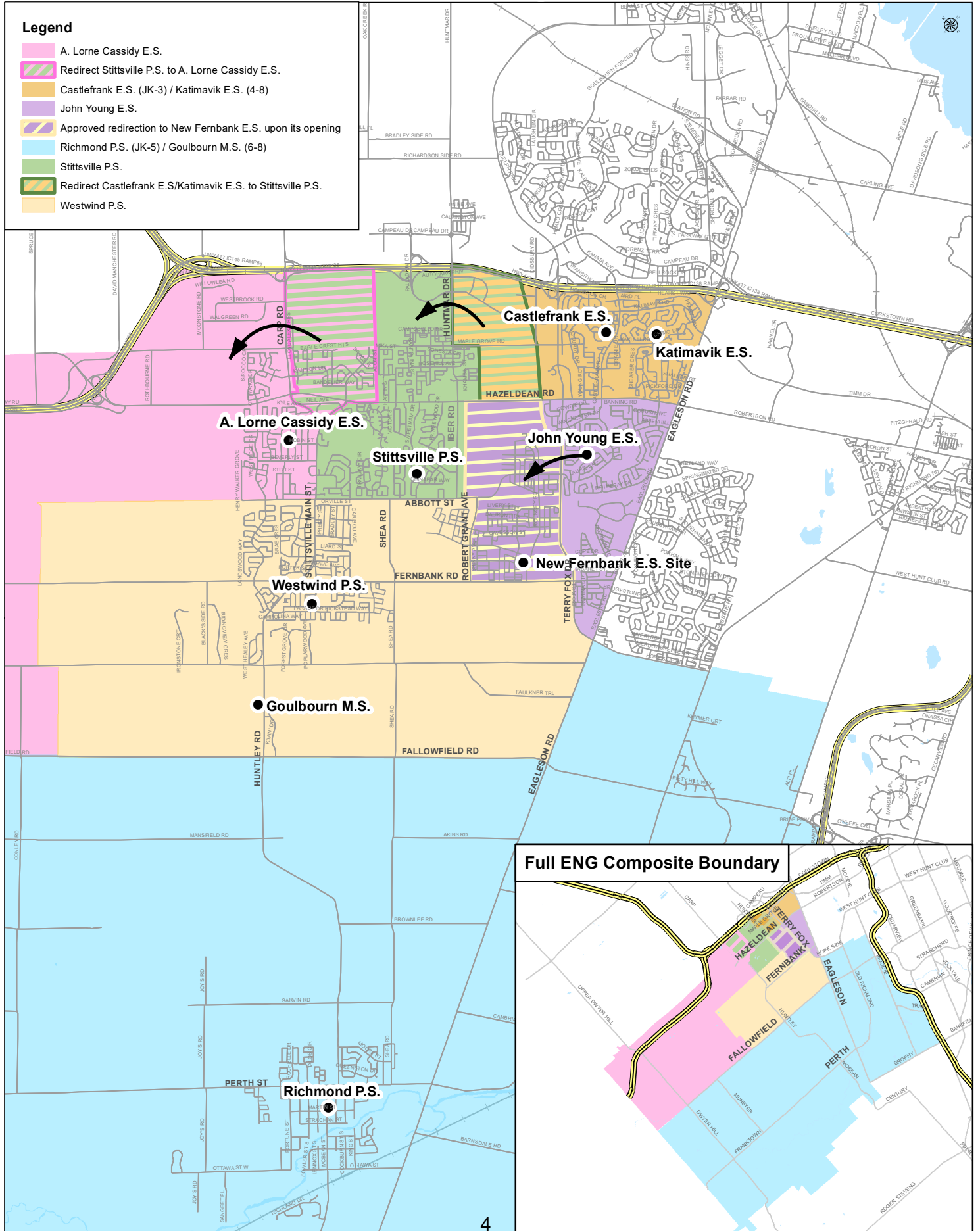
When considering where best to draw a new boundary division between these two schools, we should have regard for the potential number of future residential units and the location of the two designated future elementary school north of Hazeldean Road (Kanata West ES 1 and Kanata West ES 2). If possible, we should attempt to minimize the number of transitions for students who may be impacted by the opening of new schools.



Current K to 6 ENG Composite Map Redirection Options

Legend

- A. Lorne Cassidy E.S.
- Redirect Stittville P.S. to A. Lorne Cassidy E.S.
- Castlefrank E.S. (JK-3) / Katimavik E.S. (4-8)
- John Young E.S.
- Approved redirection to New Fernbank E.S. upon its opening
- Richmond P.S. (JK-5) / Goulbourn M.S. (6-8)
- Stittville P.S.
- Redirect Castlefrank E.S./Katimavik E.S. to Stittville P.S.
- Westwind P.S.

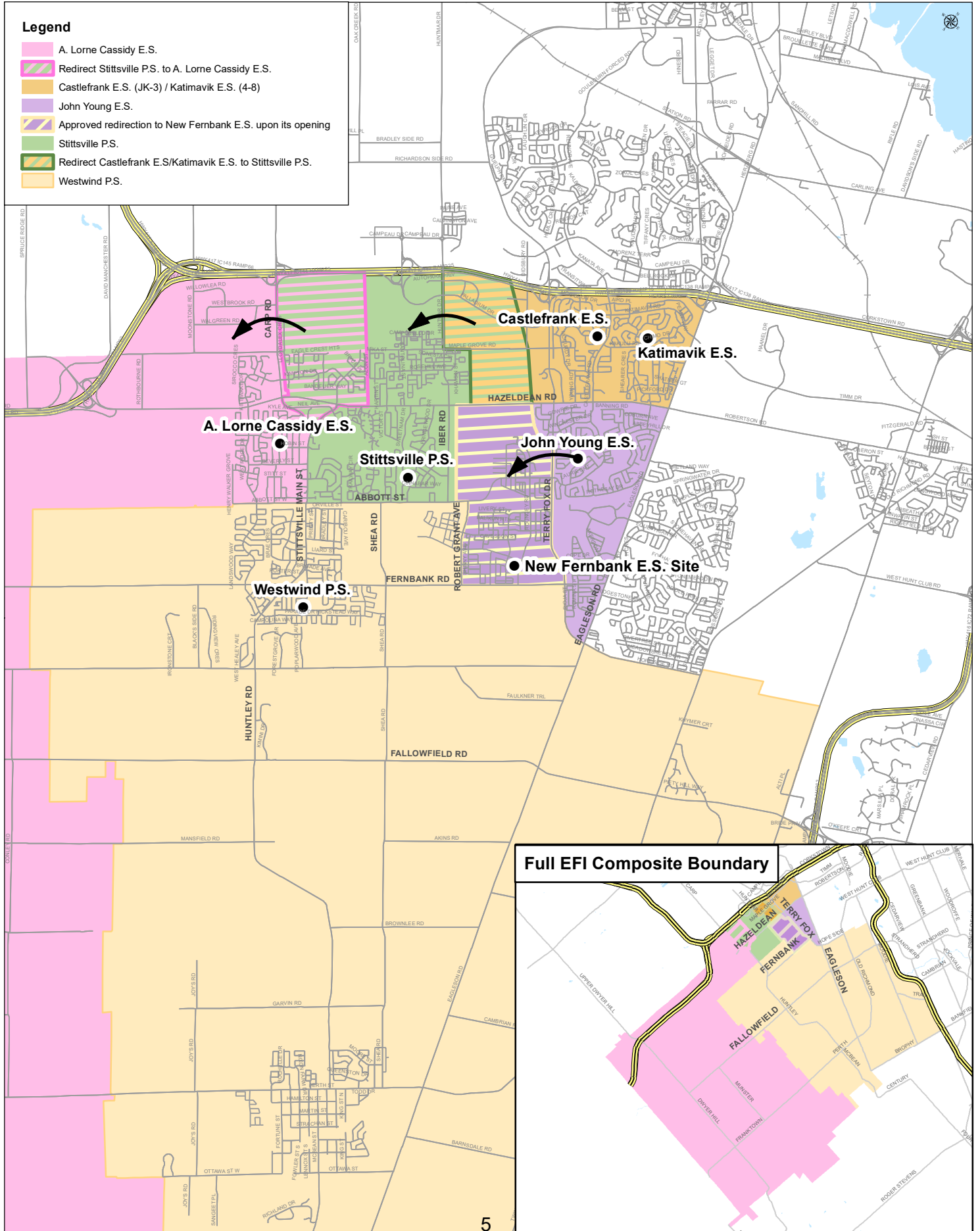




Current K to 6 EFI Composite Map Redirection Options

Legend

- A. Lorne Cassidy E.S.
- Redirect Stittville P.S. to A. Lorne Cassidy E.S.
- Castlefrank E.S. (JK-3) / Katimavik E.S. (4-8)
- John Young E.S.
- Approved redirection to New Fernbank E.S. upon its opening
- Stittville P.S.
- Redirect Castlefrank E.S./Katimavik E.S. to Stittville P.S.
- Westwind P.S.

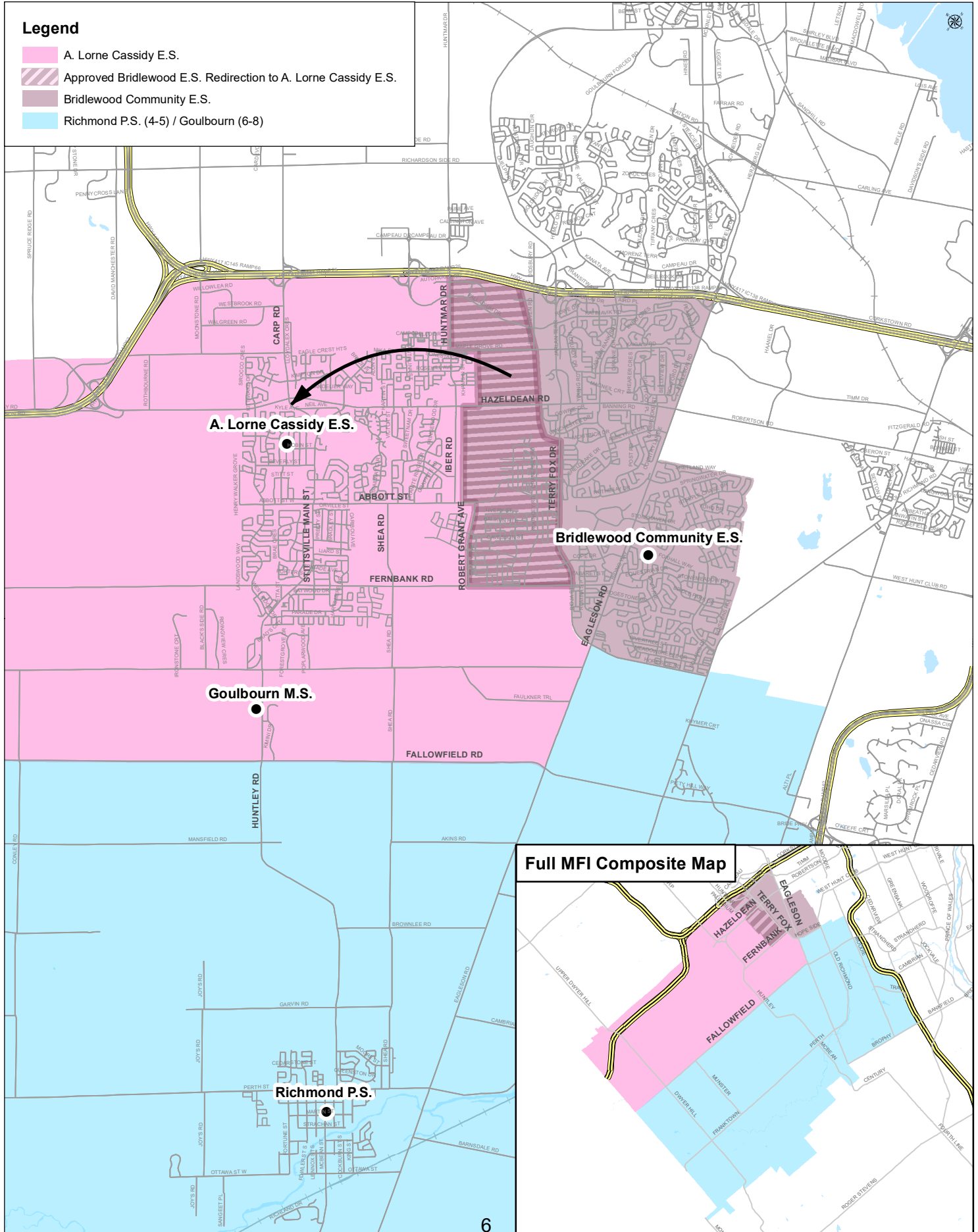




Current 4 to 6 MFI Composite Map Previously Approved Redirection

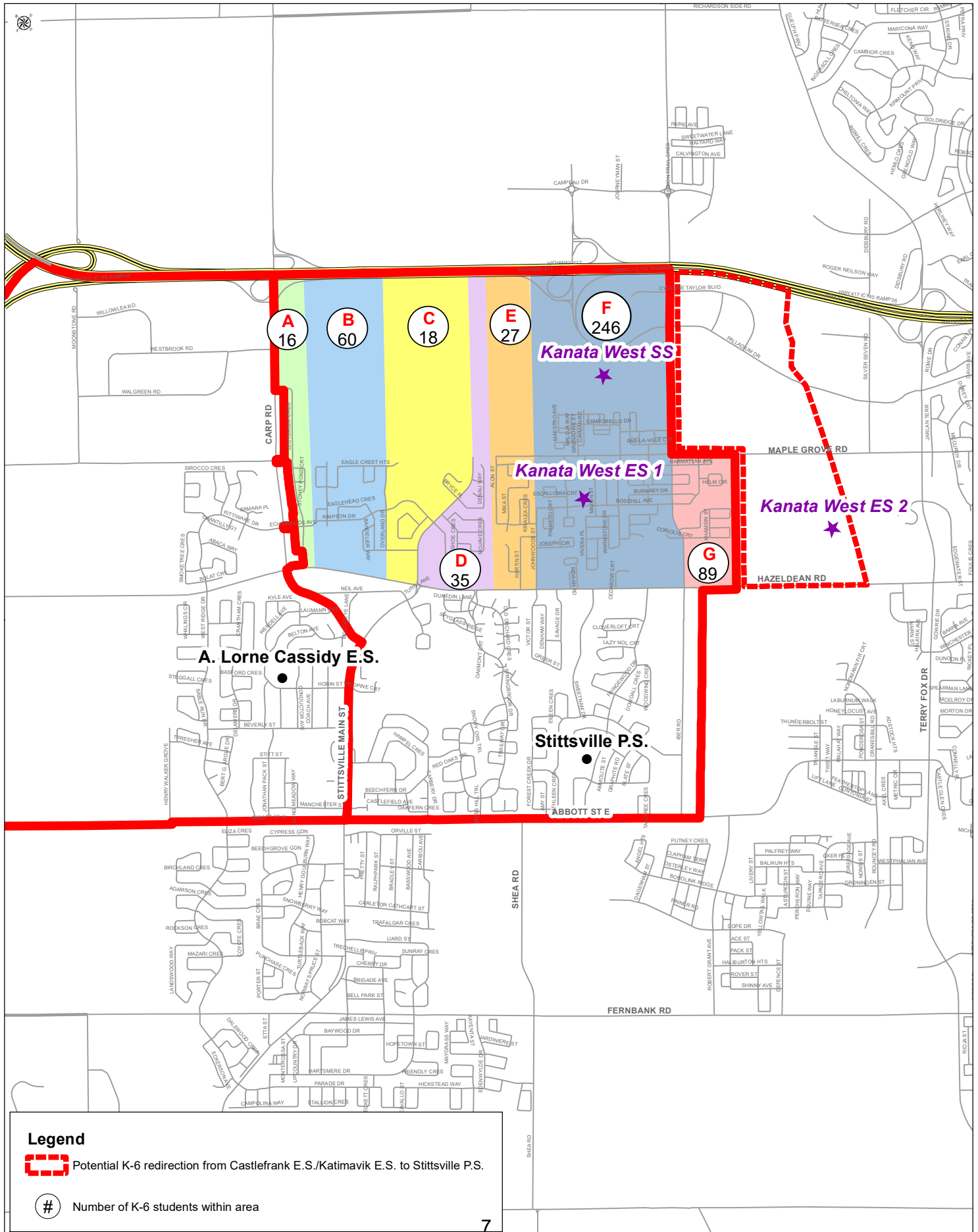
Legend

- A. Lorne Cassidy E.S.
- Approved Bridlewood E.S. Redirection to A. Lorne Cassidy E.S.
- Bridlewood Community E.S.
- Richmond P.S. (4-5) / Goulbourn (6-8)





Potential Areas for K to 6 Redirections



Legend

- Potential K-6 redirection from Castlefrank E.S./Katimavik E.S. to Stittville P.S.
- Number of K-6 students within area

Kindergarten to Grade 6 Enrolment by Areas
31 October 2019

Area	All Programs	Elementary								
		Yr1	Yr 2	1	2	3	4	5	6	Total
A	Echowoods	0	3	1	0	4	3	4	1	16
B	Potter's Key	8	13	6	7	5	8	5	8	60
C	Jackson Trails - West	1	3	1	2	2	2	3	4	18
D	Jackson Trails - East	3	4	4	3	3	8	6	4	35
E	Bryanston Gate	2	1	6	1	4	3	5	5	27
F	Fairwinds/Poole Creek	23	35	31	30	29	35	36	27	246
G	East of Huntmar	9	14	9	9	14	13	7	14	89
	Total	46	73	58	52	61	72	66	63	491

Five Year Historical Enrolment by Area

A Echowoods										
School Year	Yr1	Yr 2	1	2	3	4	5	6	Total	
2015-2016	4	2	5	1	4	4	0	6	26	
2016-2017	0	4	1	3	1	4	3	0	16	
2017-2018	1	0	4	2	3	1	4	3	18	
2018-2019	2	1	0	4	2	4	1	4	18	
2019-2020	0	3	1	0	4	3	4	1	16	

B Potter's Key										
School Year	Yr1	Yr 2	1	2	3	4	5	6	Total	
2015-2016	1	2	0	2	0	3	2	1	11	
2016-2017	0	1	1	0	2	0	2	2	8	
2017-2018	2	0	0	1	0	0	0	0	3	
2018-2019	8	4	2	1	3	1	6	1	26	
2019-2020	8	13	6	7	5	8	5	8	60	

C Jackson Trails - West										
School Year	Yr1	Yr 2	1	2	3	4	5	6	Total	
2015-2016	2	4	4	6	5	5	5	3	34	
2016-2017	2	2	3	5	7	5	4	4	32	
2017-2018	1	2	2	2	3	5	3	3	21	
2018-2019	2	0	3	2	2	3	5	3	20	
2019-2020	1	3	1	2	2	2	3	4	18	

D Jackson Trails - East										
School Year	Yr1	Yr 2	1	2	3	4	5	6	Total	
2015-2016	4	8	8	4	6	3	7	3	43	
2016-2017	1	4	6	7	4	6	3	8	39	
2017-2018	3	1	4	6	7	5	4	4	34	
2018-2019	5	3	5	4	6	4	6	4	37	
2019-2020	3	4	4	3	3	8	6	4	35	

E Bryantson's Gate										
School Year	Yr1	Yr 2	1	2	3	4	5	6	Total	
2015-2016	3	1	9	3	3	4	4	4	31	
2016-2017	2	3	2	9	4	2	4	5	31	
2017-2018	5	3	4	3	9	4	2	4	34	
2018-2019	3	5	2	5	3	8	5	2	33	
2019-2020	2	1	6	1	4	3	5	5	27	

F Fairwinds/Poole Creek										
School Year	Yr1	Yr 2	1	2	3	4	5	6	Total	
2015-2016	27	37	27	25	18	12	25	12	183	
2016-2017	26	31	41	28	30	19	21	26	222	
2017-2018	29	30	32	41	29	34	30	22	247	
2018-2019	39	34	31	33	39	32	32	28	268	
2019-2020	23	35	31	30	29	35	36	27	246	

G East of Huntmar										
School Year	Yr1	Yr 2	1	2	3	4	5	6	Total	
2015-2016	22	17	15	25	10	10	10	9	118	
2016-2017	12	22	18	10	24	13	10	8	117	
2017-2018	9	11	18	17	9	18	13	10	105	
2018-2019	16	9	11	15	17	10	15	10	103	
2019-2020	9	14	9	9	14	13	7	14	89	

Input Received From Public After Working Group Meeting #2

- An East-West Attendance Boundary for New Stittsville SS
- Review Designated Schools for Fallowfield Village

An East-West Attendance Boundary for New Stittsville SS

Input was received asking if an East-West attendance boundary division could be considered for the New Stittsville Secondary School (SS). The suggestion was to use Stittsville Main Street as the attendance boundary division between South Carleton High School (HS) and New Stittsville SS.

Staff had previously reviewed an East-West attendance boundary option for the new school. Although a boundary such as this would assist with reducing enrolment at the new school in the first few years, it was felt that directing the entire Village of Stittsville to the new grades 7 to 12 secondary school made more sense in the longer term and would be more inline with the expectations of the community.

Capital funding was provided by the Ministry of Education for a grade 7 to 12 secondary school to serve students residing in Stittsville.

If an East-West attendance boundary option is to be considered, the location of the future Kanata West secondary school would need to be kept in mind during the examination, to ensure logical geographic attendance boundaries and feeding patterns for area schools into the future.

Factors to Consider:

Pros:

- Set a long-term sustainable attendance boundary for New Stittsville SS immediately, rather than right sizing it in the future when a second area secondary school is opened.
- It would take longer for accommodation pressures to build at new Stittsville SS.
- A portion of Stittsville would not be redirected twice – once from South Carleton HS to New Stittsville SS and then from New Stittsville SS to a second new secondary school (Kanata West SS) upon its opening.
- More students would remain at A. Lorne Cassidy ES, Goulbourn MS and South Carleton HS until more new schools could be built in the future. Goulbourn MS and South Carleton HS would be better able to maintain robust programs, student placement flexibility, extra curricular activity opportunities, etc.

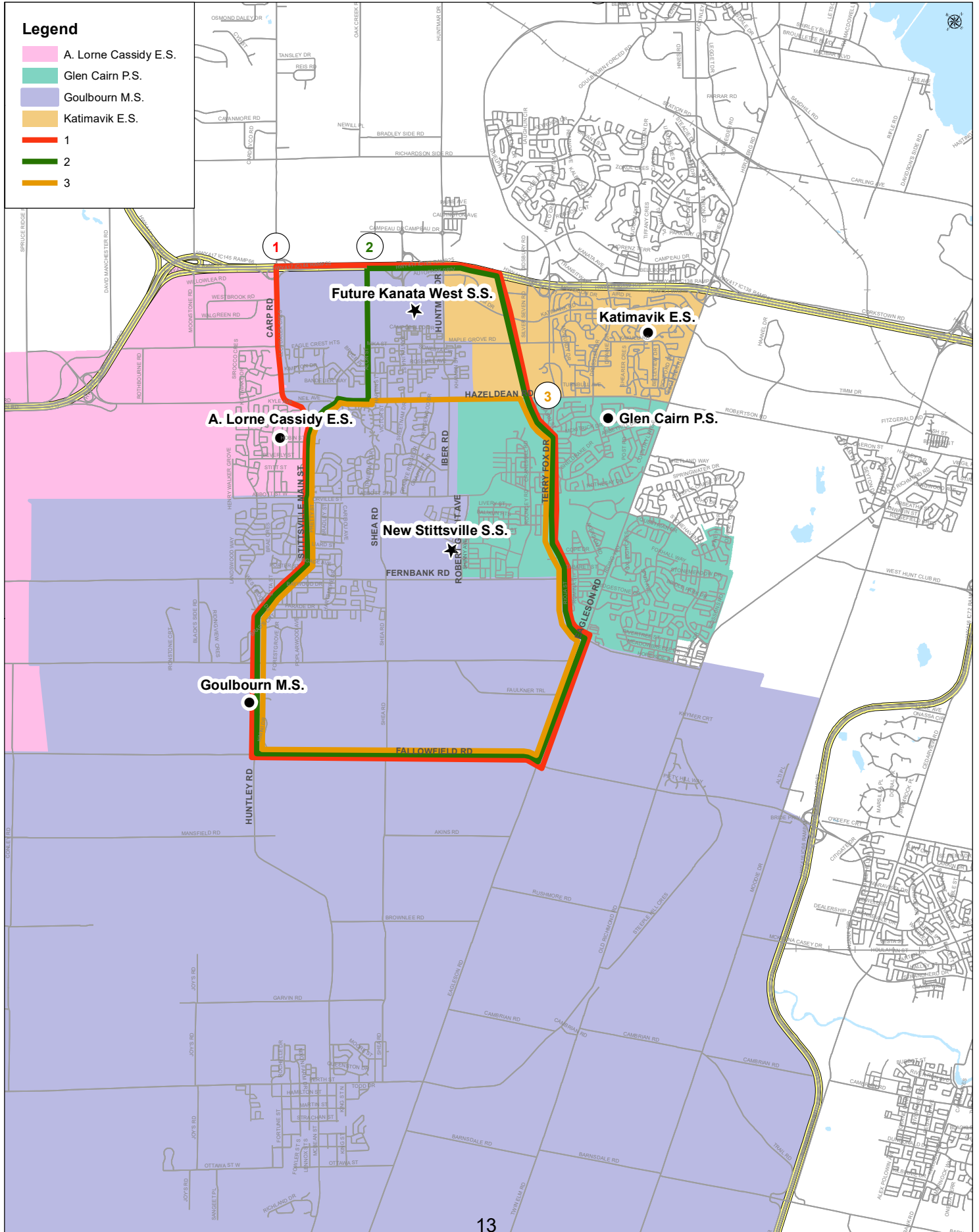
Cons:

- Funding was provided for a secondary school to serve students residing in Stittsville – under this option not all Stittsville area students would be accommodated at the new school.

- Students in longer established Stittsville neighbourhoods (west of Stittsville Main Street) would not attend the new school.
 - Would it make more sense to exclude newer neighbourhoods such as those north of Hazeldean Road and a portion of Fernbank (north of the Trans Canada Trail and east of Iber) from the new Stittsville SS attendance boundary and have them attend the new Kanata West SS upon its opening?
- Under an East-West attendance boundary option it would introduce a split feeding pattern for Westwind PS and possibly Stittsville PS (and/or new Fernbank ES) grade 6 students moving to grade 7 (see map on page 17). Some students would feed to the New Stittsville SS while others would continue to feed to Goulbourn MS/South Carleton. Creating a split feeding pattern goes against the premise of working towards creating a family of schools for the Stittsville area.
 - Extending the time for accommodation pressure to build at the new school would most likely delay the ability to establish a strong business case and secure capital funding required for an addition at the new school and/or a second secondary school in Stittsville.
 - In the past, the Ministry has funded a new Ottawa-Carleton District School Board (OCDSB) secondary school approximately every ten years. It could therefore be at least 10 years before another area secondary school would open allowing all Stittsville area students to be accommodated in Stittsville.
 - When securing capital funding for a second Stittsville area secondary school, the need would most likely be competing against other OCDSB secondary accommodation needs – such as new secondary schools in Riverside South, Half Moon Bay and/or Kanata North.



East - West Option: New Stittsville S.S. Study Current 7 to 8 ENG Composite Map

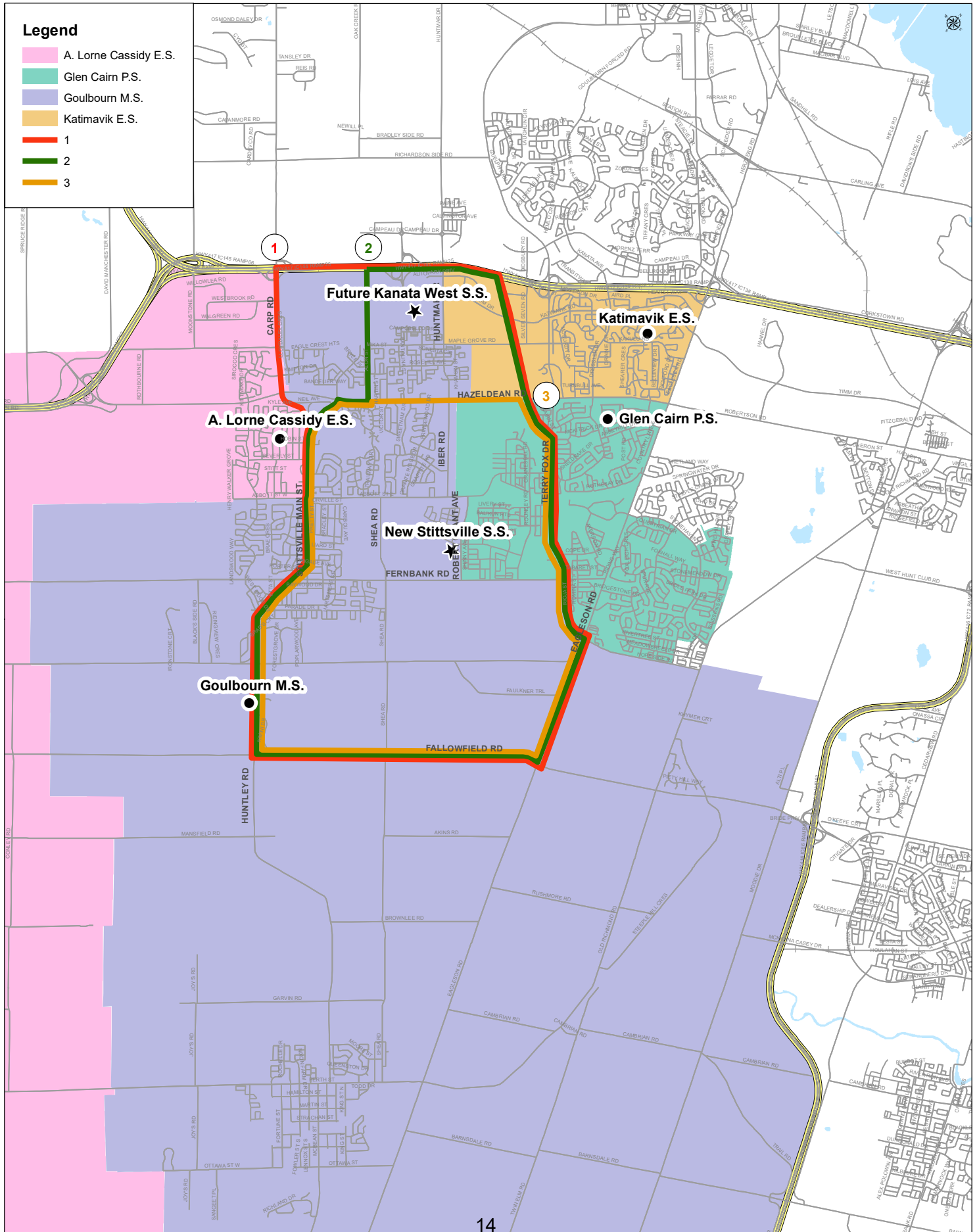




OTTAWA-CARLETON
DISTRICT SCHOOL BOARD

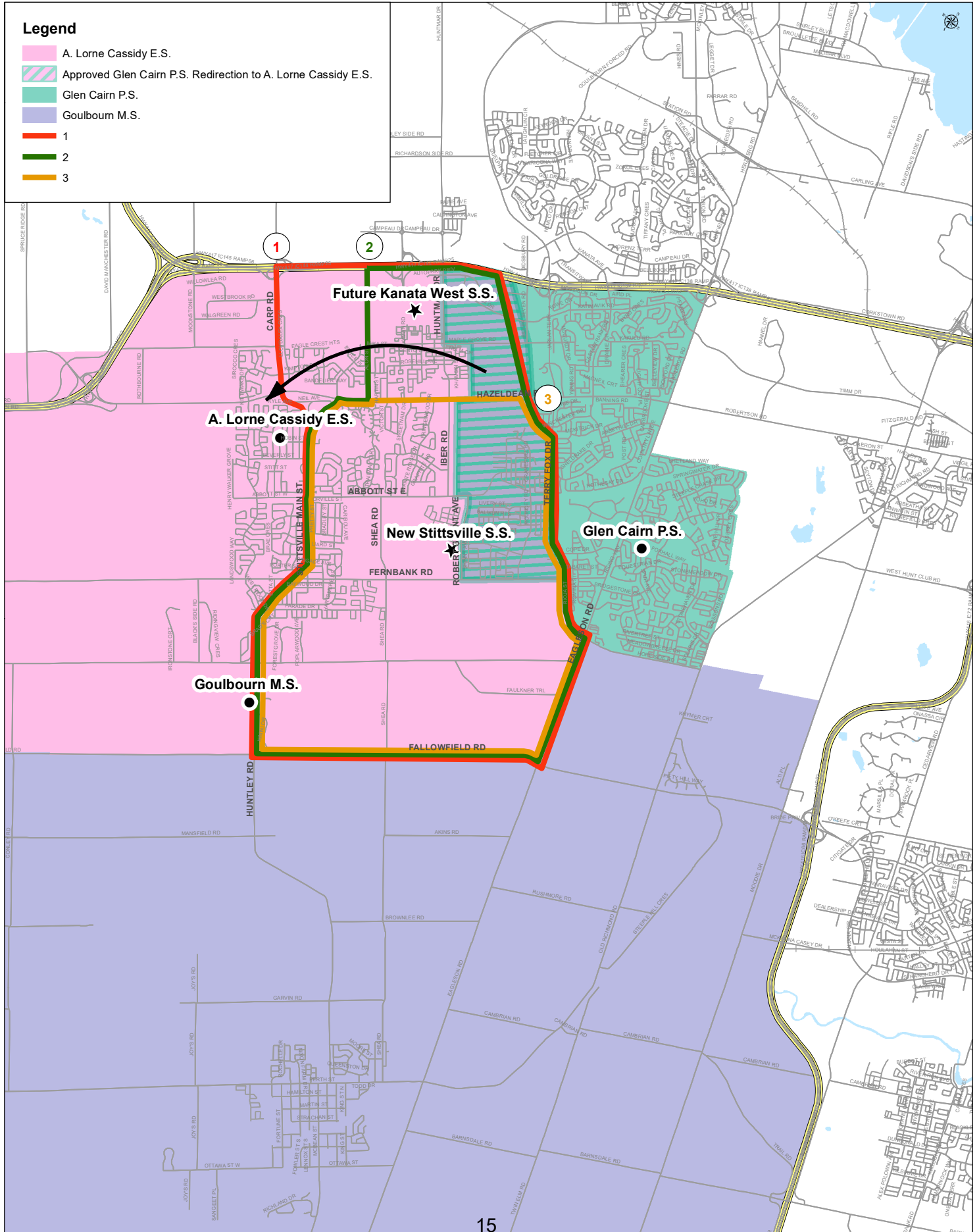
East - West Option: New Stittsville S.S. Study

Current 7 to 8 EFI Composite Map





East - West Option: New Stittsville S.S. Study Current 7 to 8 MFI Composite Map



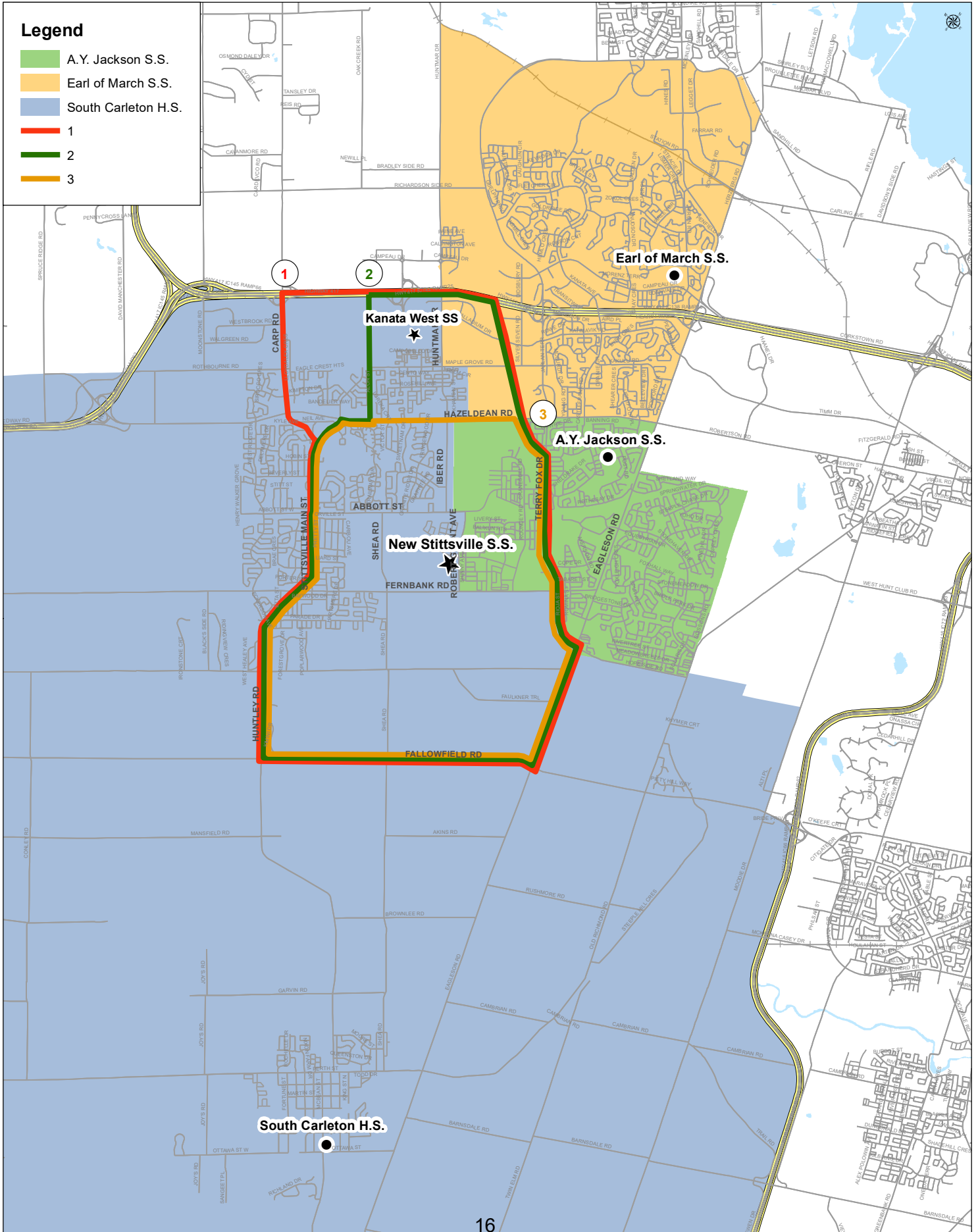


OTTAWA-CARLETON DISTRICT SCHOOL BOARD

East - West Option: New Stittsville S.S. Study Secondary School Composite Map

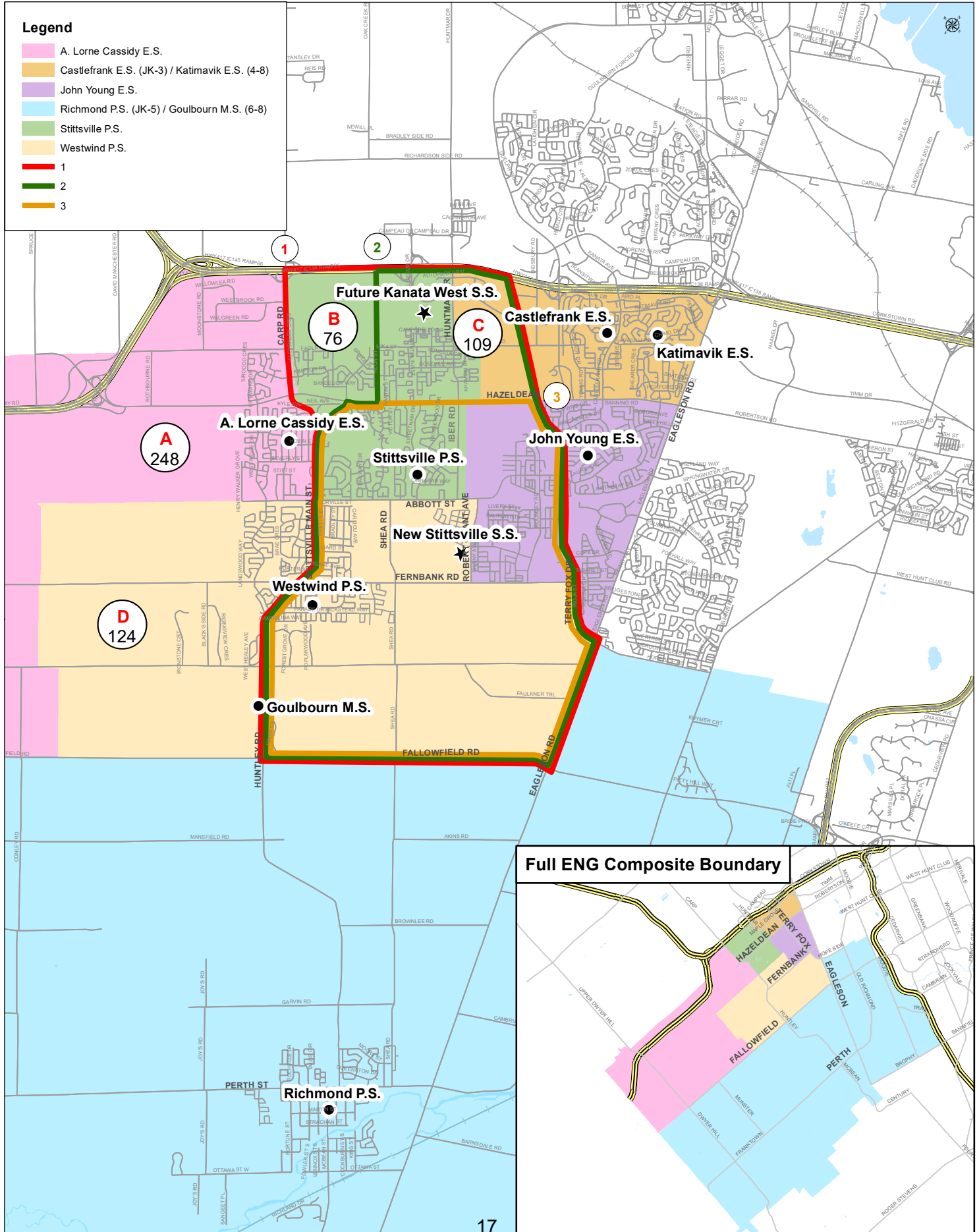
Legend

- A.Y. Jackson S.S.
- Earl of March S.S.
- South Carleton H.S.
- 1
- 2
- 3





Potential Areas for 7 to 12 Redirections



**Grades 7 to 12 Enrolment by Areas
31 October 2019**

Area	All Programs	Elementary						
		7	8	9	10	11	12	Total
A	A Lorne Cassidy ES	52	47	38	46	24	41	248
B	Stittsville PS - Echowoods to Byranston Gate	12	20	12	15	6	11	76
C	Stittsville PS - Fairwinds & Poole Creek	27	24	19	18	9	12	109
D	Westwind PS - West of Stittsville Main	27	27	15	17	18	20	124
	Total	118	118	84	96	57	84	557

Five Year Historical Enrolment by Area

A A Lorne Cassidy ES								
School Year	7	8	9	10	11	12	Total	
2015-2016	26	36	33	46	37	54	232	
2016-2017	45	24	37	32	42	36	216	
2017-2018	36	45	52	38	33	44	248	
2018-2019	46	35	44	23	38	34	220	
2019-2020	52	47	38	46	24	41	248	

B Stittsville PS - Echowoods to Byranston Gate								
School Year	7	8	9	10	11	12	Total	
2015-2016	6	15	19	10	16	6	72	
2016-2017	13	7	13	21	10	16	80	
2017-2018	12	12	6	14	17	11	72	
2018-2019	14	11	14	8	13	16	76	
2019-2020	12	20	12	15	6	11	76	

C Stittsville PS - Fairwinds & Poole Creek								
School Year	7	8	9	10	11	12	Total	
2015-2016	8	10	8	9	12	6	53	
2016-2017	24	8	11	6	8	10	67	
2017-2018	34	23	9	12	14	8	100	
2018-2019	24	31	19	8	12	14	108	
2019-2020	27	24	19	18	9	12	109	

D Westwind PS - West of Stittsville Main Street								
School Year	7	8	9	10	11	12	Total	
2015-2016	25	24	16	15	20	23	123	
2016-2017	25	18	22	20	16	20	121	
2017-2018	16	18	18	22	20	16	110	
2018-2019	25	15	13	19	21	17	110	
2019-2020	27	27	15	17	18	20	124	

Review Designated Schools for Fallowfield Village

Input was received asking if as part of this study the OCDSB would be willing to review the designated schools for Fallowfield Village (located within the former City of Nepean) area students. On 31 October 2019 there were 25 kindergarten to grade 12 OCDSB students residing within Fallowfield Village (see chart on page 24).

Currently students residing within Fallowfield Village are designated to attend the following schools:

- **Richmond PS** for K to 5 ENG, 4 to 5 MFI
- **Westwind PS** for K to 6 EFI
- **Goulbourn MS** for 6 to 8 ENG & MFI, 7 to 8 EFI
- **South Carleton HS** for 9 to 12

Fallowfield Village is geographically closer to some schools in Kanata South, South Nepean and Stittsville (see distance chart on page 25).

Should consideration be given at this time to revising the designated schools for the Fallowfield Village area?

Kanata South Schools – limited new residential growth and relatively stable enrolment at K to 6 schools, the opening of the new Stittsville SS will alleviate some accommodation pressure at Glen Cairn PS and AY Jackson SS.

School	Grade and Program	Cap	Port	Enrol	Util
Bridlewood CES	K to 6 ENG & EFI, 4 to 6 MFI	459	0	406	88%
Roch Carrier ES	K to 6 ENG & EFI, G.ENG	430	6	460	107%
W.O. Mitchell ES	K to 8 ENG & EFI	516	6	580	112%
Glen Cairn PS	7 to 8 ENG, EFI, MFI	352	0	312	89%
A.Y. Jackson SS	9 to 12	759	12	897	118%

Stittsville Schools – Stittsville is the fastest growing residential development area in Ottawa. There are accommodation pressures or expected future accommodation pressures at most area schools. An interim boundary revision between John Young ES and Westwind PS is being implemented for September 2020. It will alleviate some of the accommodation pressure at John Young ES until a new elementary school can be opened in Fernbank (top capital priority of the OCDSB – funding request has been submitted, waiting for response from the Ministry). This change will result in accommodation pressures at Westwind PS for at least one to two years.

School	Grade and Program	Cap	Port	Enrol	Util
A Lorne Cassidy ES	K to 8 ENG, EFI, 4 to 8 MFI	600	4	589	98%
New Fernbank ES	K to 6 ENG & EFI	na	na	na	na
Stittsville PS	K to 6 ENG & EFI	626	3	655	105%
Westwind PS	K to 6 ENG & EFI	628	0	521	83%
New Stittsville SS	7 to 8 ENG, EFI & MFI, 9 to 12	na	na	na	na

South Nepean Schools – Accommodation pressures exist or are expected at area schools. There is continuing significant new residential development expected into the foreseeable future. An intermediate/secondary attendance boundary revision is being implemented for September 2020 to better balance enrolment between Cedarview MS, John McCrae SS and Longfields-Davidson Heights SS.

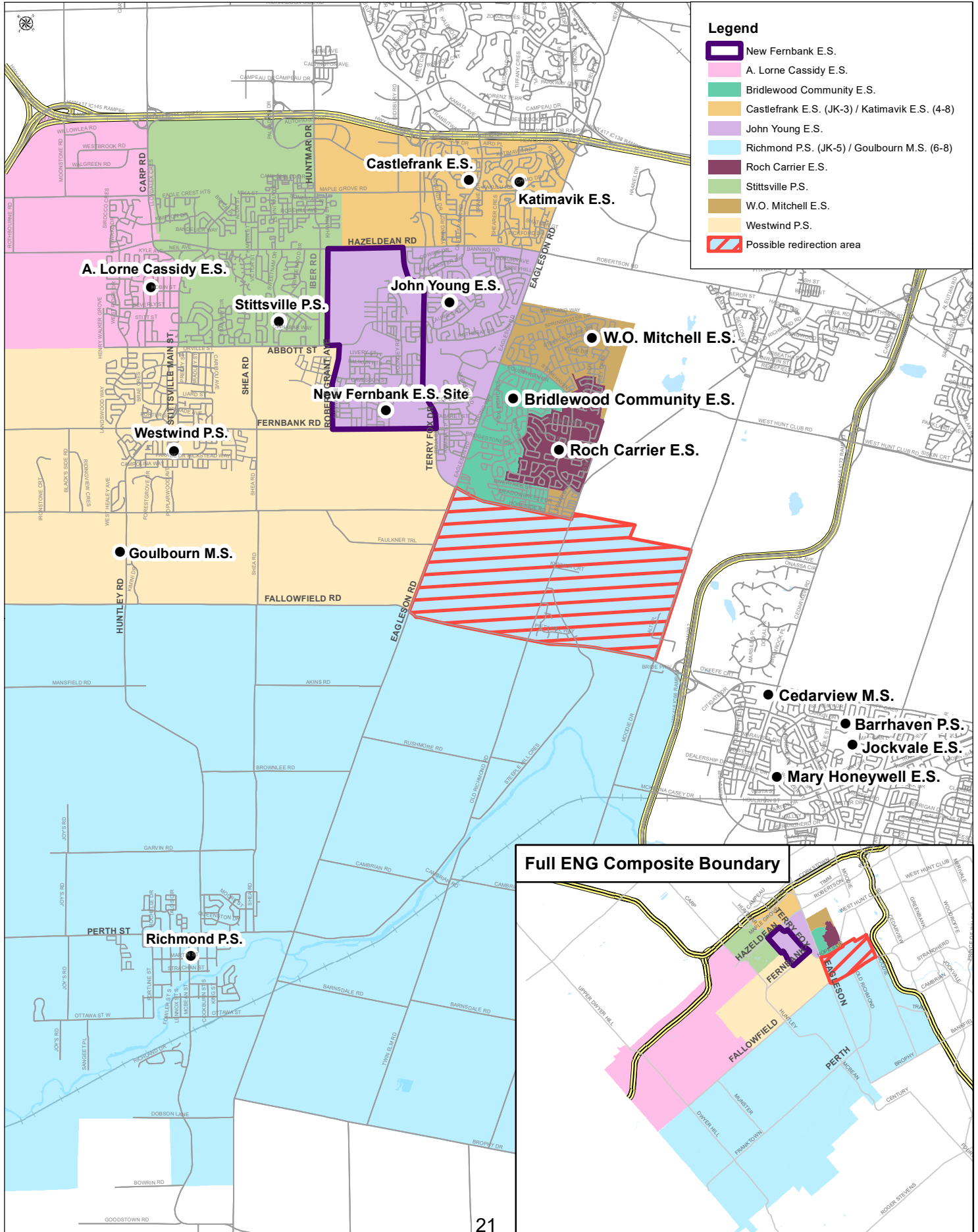
School	Grade and Program	Cap	Port	Enrol	Util
Barrhaven PS	K to 6 ENG, EFI, 4 to 8 MFI	409	7	512	125%
Jockvale ES	K to 6 ENG & EFI	479	0	360	75%
Mary Honeywell PS	K to 6 ENG & EFI	580	7	617	106%
Cedarview MS	7 to 8 ENG, EFI, & MFI	711	7	773	109%
John McCrae SS	9 to 12	996	15	1391	140%

Notes: Enrolment in charts is as of 31 October 2019

Cap = Capacity, Port = Portables, Enrol = 31 October 2019 Enrolment, Util = Utilization which is calculated as Enrolment (Head Count Total)/Capacity

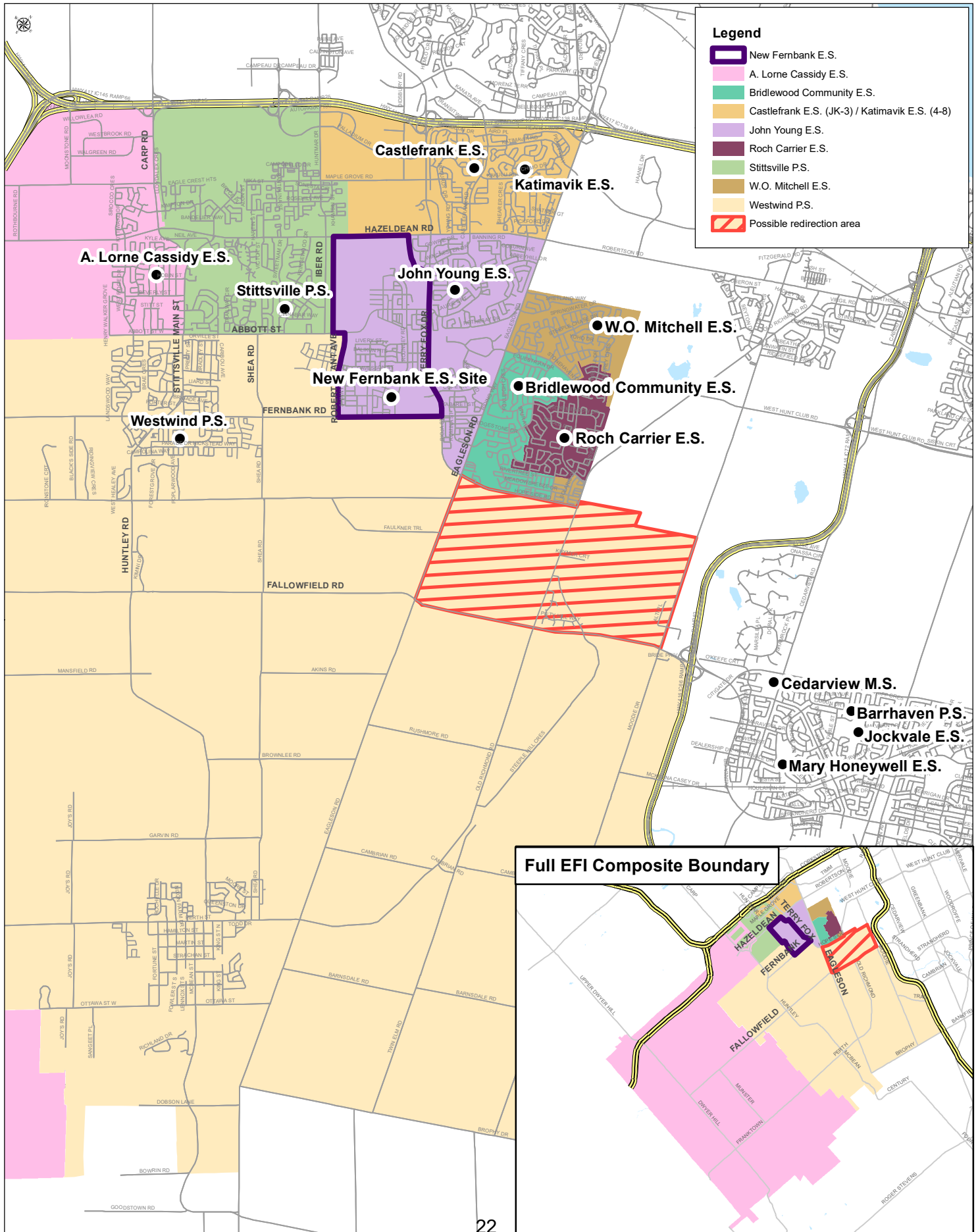


Current K to 6 ENG Composite Map Possible Fallowfield Village Redirection

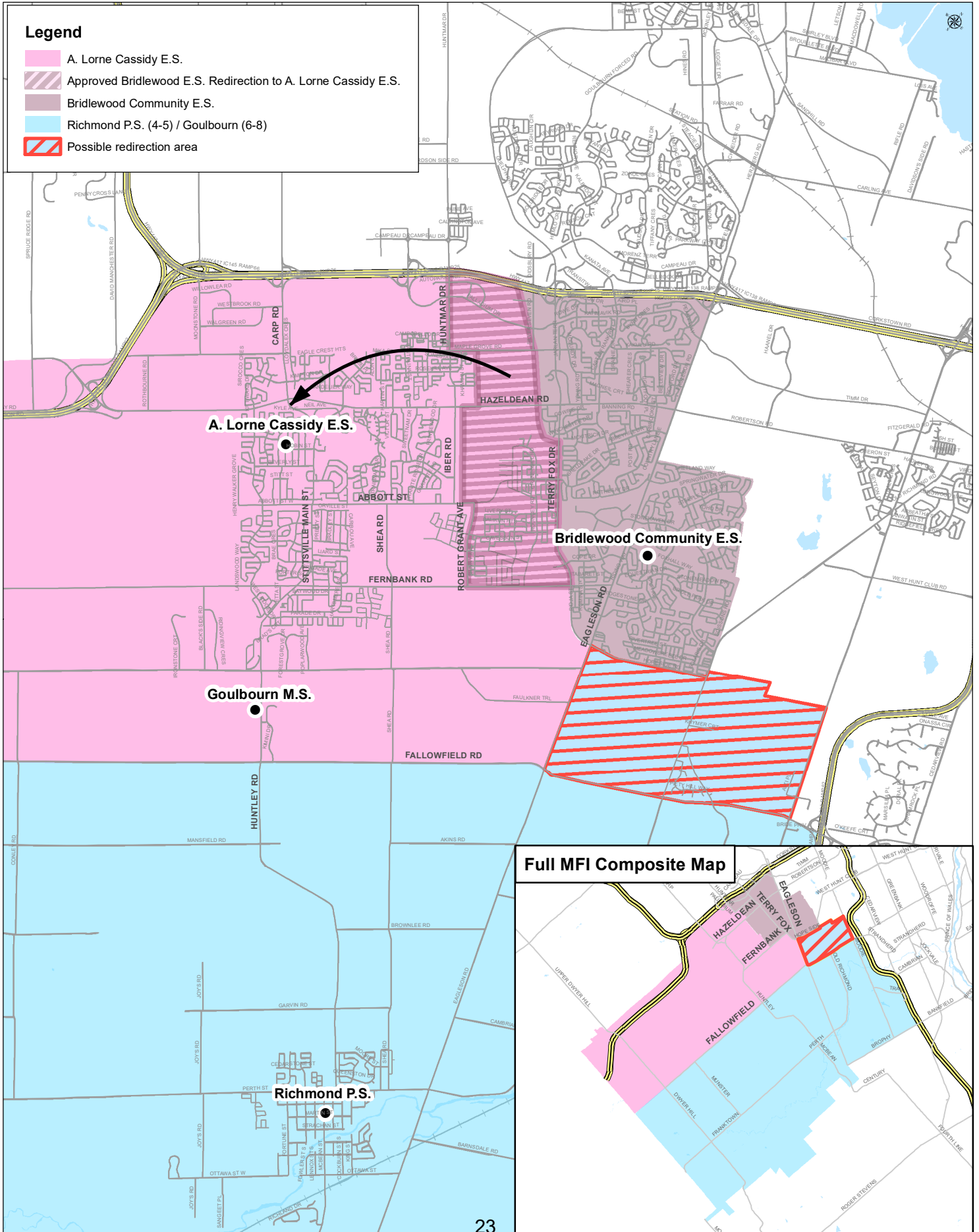




Current K to 6 EFI Composite Map Possible Fallowfield Village Redirection



Current 4 to 6 MFI Composite Map Possible Fallowfield Village Redirection



**Number of OCDSB Students Residing in Fallowfield Village
31 October 2019**

School Year	Yr1	Yr 2	1	2	3	4	5	6	7	8	9	10	11	12	Yr1-12	Yr1-6	7&8	9-12
															Total	Total	Total	Total
2015-2016	0	1	1	1	0	2	2	0	4	1	1	0	1	1	15	7	5	3
2016-2017	0	1	1	1	1	0	2	2	0	4	1	1	0	1	15	8	4	3
2017-2018	0	0	0	1	1	1	0	3	2	2	4	1	1	1	17	6	4	7
2018-2019	1	0	0	0	1	1	1	2	3	2	1	4	2	1	19	6	5	8
2019-2020	1	1	2	0	1	1	2	1	2	3	4	1	4	2	25	9	5	11

School	Distance From Fallowfield Village (Center)
A Lorne Cassidy ES	12.8
Barrhaven PS	5.4
Bridlewood CES	5.1
Glen Cairn PS	8.6
Jockvale ES	6.1
Mary Honywell ES	5.2
New Fernbank ES	6.0
Richmond PS	10.3
Roch Carrier ES	3.2
Stittsville PS	11.0
Westwind PS	10.4
Cedarview MS	4.1
Glen Cairn PS	8.5
Goulbourn MS	8.8
AY Jackson SS	8.4
John McCrae SS	5.7
South Carleton HS	10.9
NEW STITTSVILLE SS	7.2

Notes:

1) Distance is measured in Kilometres and measured using Google Maps based on a central address located in Fallowfield Village. Distances noted are shortest but may not be the most direct or practical.

2) Bolded school names are the current designated schools for the area of Fallowfield Village

Supplemental Information

- Working Option A
 - Summary & 9-12 Map
- Working Option B
 - Summary & 9-12 Map
- 31 October 2019 Enrolment
- Summary of Residential Permits and Enrolment by Study Planning Areas
- Study Planning Areas Maps
- Revised Study Timeline

Working Option A

**New Stittsville SS is Grade 7 to 8 ENG/EFI/MFI and Grade 9 to 12
ENG/IMM
with an attendance boundary that includes all Planning Areas (1-13)*
west of the Carp River/Terry Fox Drive**

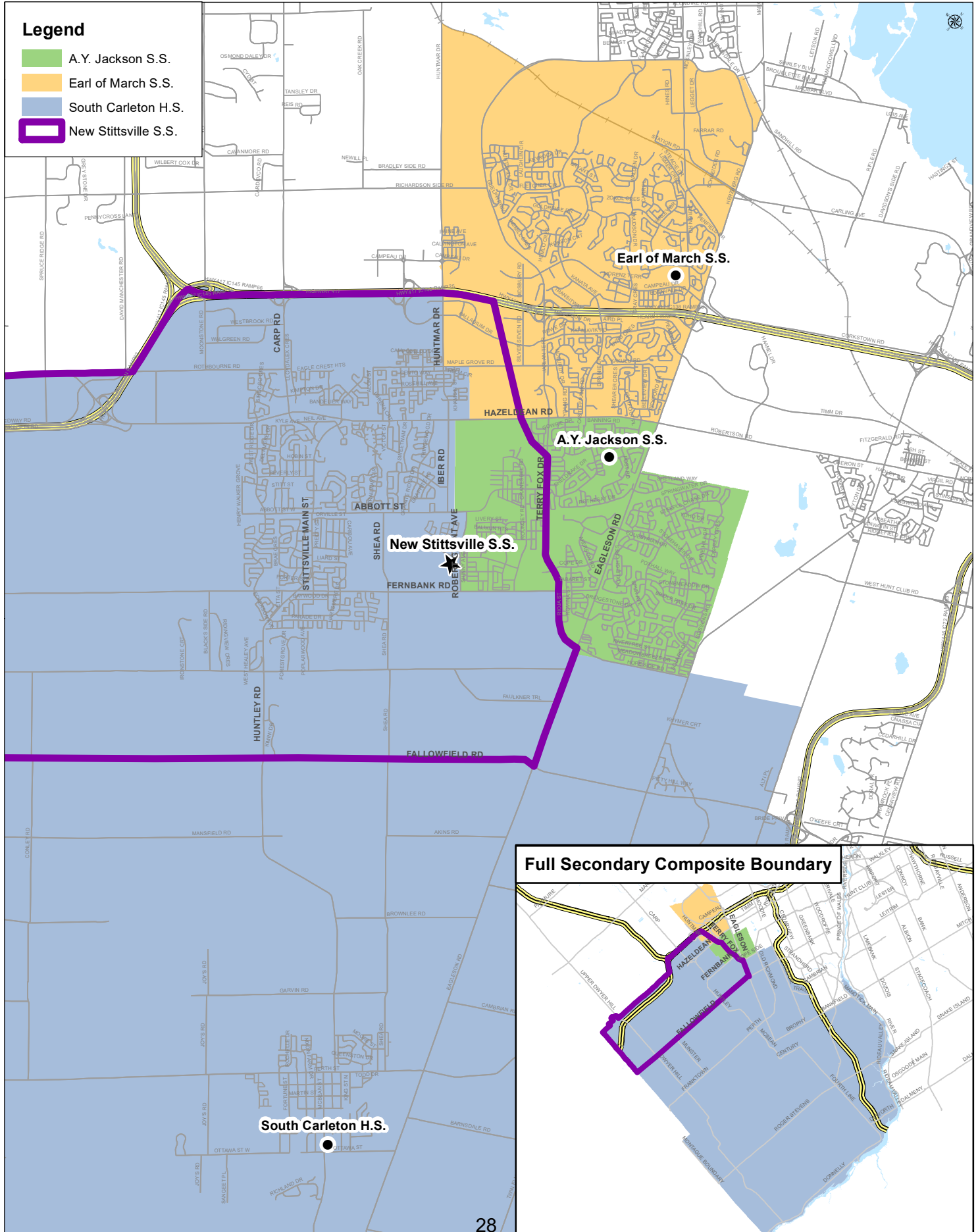
- **A. Lorne Cassidy ES** becomes a K to 6 ENG/EFI/MFI school.
 - Grade 7 and 8 program is relocated to New Stittsville SS.
 - Students residing north of Fallowfield Road would feed to New Stittsville SS for 7 to 12.
 - Students residing south of Fallowfield Road would feed to Goulbourn MS for 7 & 8, and continue to feed to South Carleton HS for 9 to 12.
- **New Fernbank ES and Stittsville PS** remain K to 6 ENG/EFI schools and students would feed to New Stittsville SS for 7 to 12.
- **Westwind PS** remains K to 6 ENG/EFI school.
 - Students residing north of Fallowfield Road would feed to New Stittsville SS for 7 to 12.
 - Students residing south of Fallowfield Road would continue to feed to Goulbourn MS for 7 & 8, and South Carleton HS for 9 to 12.

* *Planning Areas were included in Working Group Meeting #1 information package, dated November 27th, 2019.*



OTTAWA-CARLETON DISTRICT SCHOOL BOARD

Working Option A: New Stittsville S.S. Study Secondary School Composite Map



Working Option B

**New Stittsville SS is Grade 7 to 8 ENG/EFI/MFI and Grade 9 to 12
ENG/IMM**

**with an attendance boundary that includes all Planning Areas* west of
the Carp River/Terry Fox Drive, except for only a portion of Area 12**

- Students residing within the western portion of the current **A. Lorne Cassidy ES** K to 8 ENG boundary (west of Spruce Ridge Road) would attend A. Lorne Cassidy ES for K to 6 ENG/EFI/MFI and then feed to Goulbourn MS for 7 & 8 and then continue to feed to South Carleton HS for 9 to 12.
- Students residing within the eastern portion of the current **A. Lorne Cassidy ES** K to 8 ENG boundary (east of Spruce Ridge Road) and north of Fallowfield Road would attend A. Lorne Cassidy ES for K to 6 ENG/EFI/MFI and feed to New Stittsville SS for 7 to 12.

* *Planning Areas were included in Working Group Meeting #1 information package, dated November 27th, 2019.*

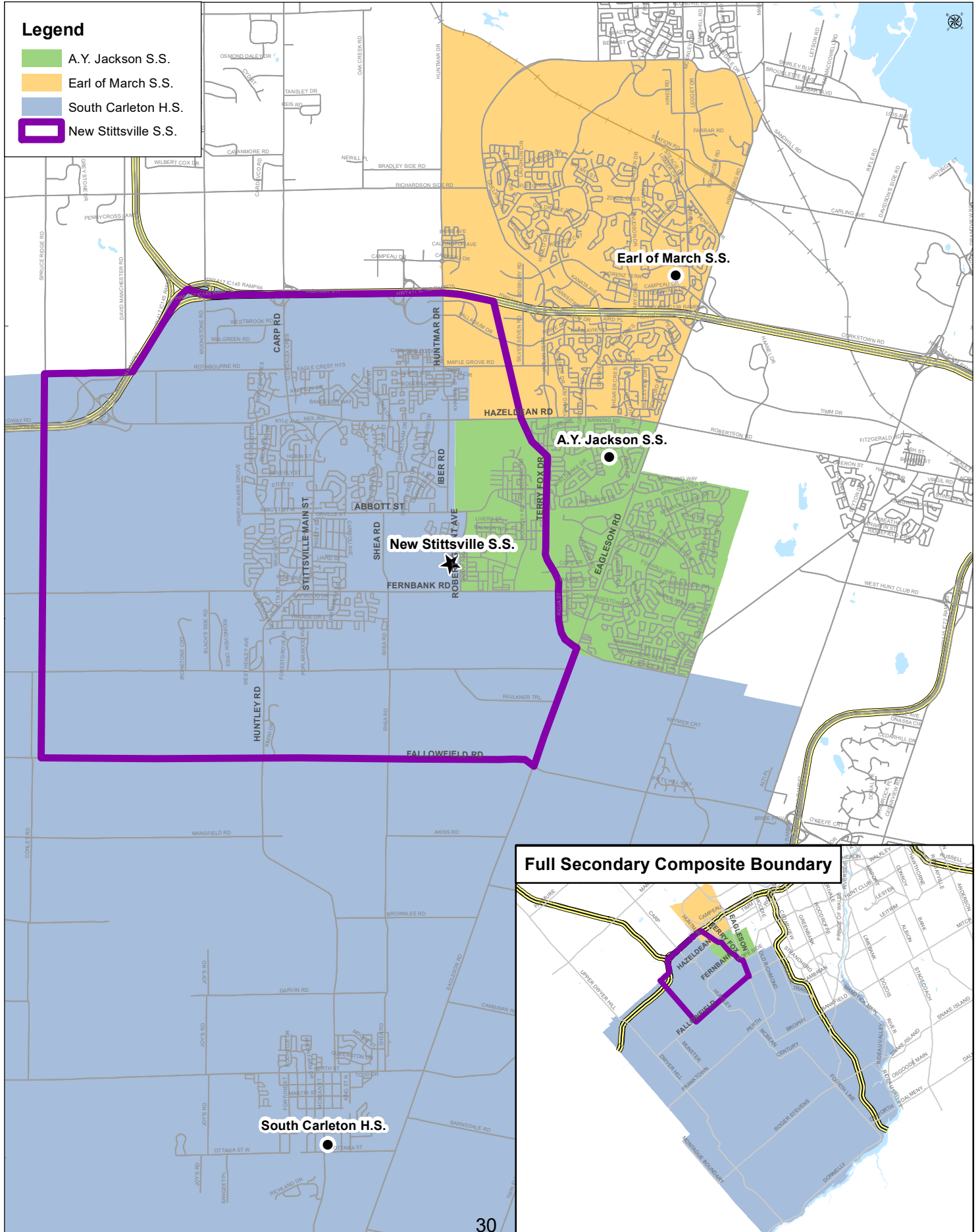


OTTAWA-CARLETON DISTRICT SCHOOL BOARD

Working Option B: New Stittsville S.S. Study Secondary School Composite Map

Legend

- A.Y. Jackson S.S.
- Earl of March S.S.
- South Carleton H.S.
- New Stittsville S.S.



Stittsville Secondary School Study 31 October 2019 Enrolment

School	Capacity	Program	Yr 1	Yr 2	1	2	3	4	5	6	7	8	9	10	11	12	SE	Total	UF(%)
A. Lorne Cassidy ES	600	KGTN	41	51														92	98%
		ENG			3	13	13	14	15	15	16	10						99	
		EFI			45	44	43	36	38	41	37	33						317	
		MFI						19	21	9	10	22						81	
		Total	41	51	48	57	56	69	74	65	63	65							
Goulbourn MS	400	KGTN																0	109%
		ENG								21	74	78					16	189	
		EFI									77	55						132	
		MFI								34	34	23						91	
		Total								55	195	168					16	434	
Stittsville PS	626	KGTN	69	91														160	105%
		ENG			18	21	25	35	30	33								162	
		EFI			60	50	55	56	60	52								333	
		Total	69	91	78	71	80	91	90	85									
South Carleton HS	1344	9-12											277	328	265	267	5	1142	85%
Total	2970		110	142	126	128	136	160	164	205	258	233	277	328	265	267	21	2820	95%

Glen Cairn PS	352	KGTN																0	89%
		ENG								75	75						8	158	
		EFI								82	52							134	
		MFI								8	12							20	
		Total								165	139						8	312	
A.Y. Jackson SS	759	9-12											211	232	231	211	12	897	118%
Total	1111									165	139	211	232	231	211	20	1209	109%	

Castlefrank ES	416	KGTN	55	62														117	77%	
		ENG			13	22	16										10	61		
		EFI			60	50	34											144		
		Total	55	62	73	72	50										10	322		
Katimavik ES	387	KGTN																0	87%	
		ENG					21	21	18	24	22						28	134		
		EFI					41	42	38	45	36							202		
		Total					62	63	56	69	58						28	336		
Earl of March SS	1484	ENG									119	135					5	259	133%	
		EFI									98	92						190		
		MFI									84	67						151		
		9-12												311	347	345	356	17		1376
		Total									301	294	311	347	345	356	22	1976		
Total	2287		55	62	73	72	50	62	63	56	370	352	311	347	345	356	60	2634	115%	

Note: SE = Congregated Special Education
UF% - Utilization (Head Count Total/Capacity)

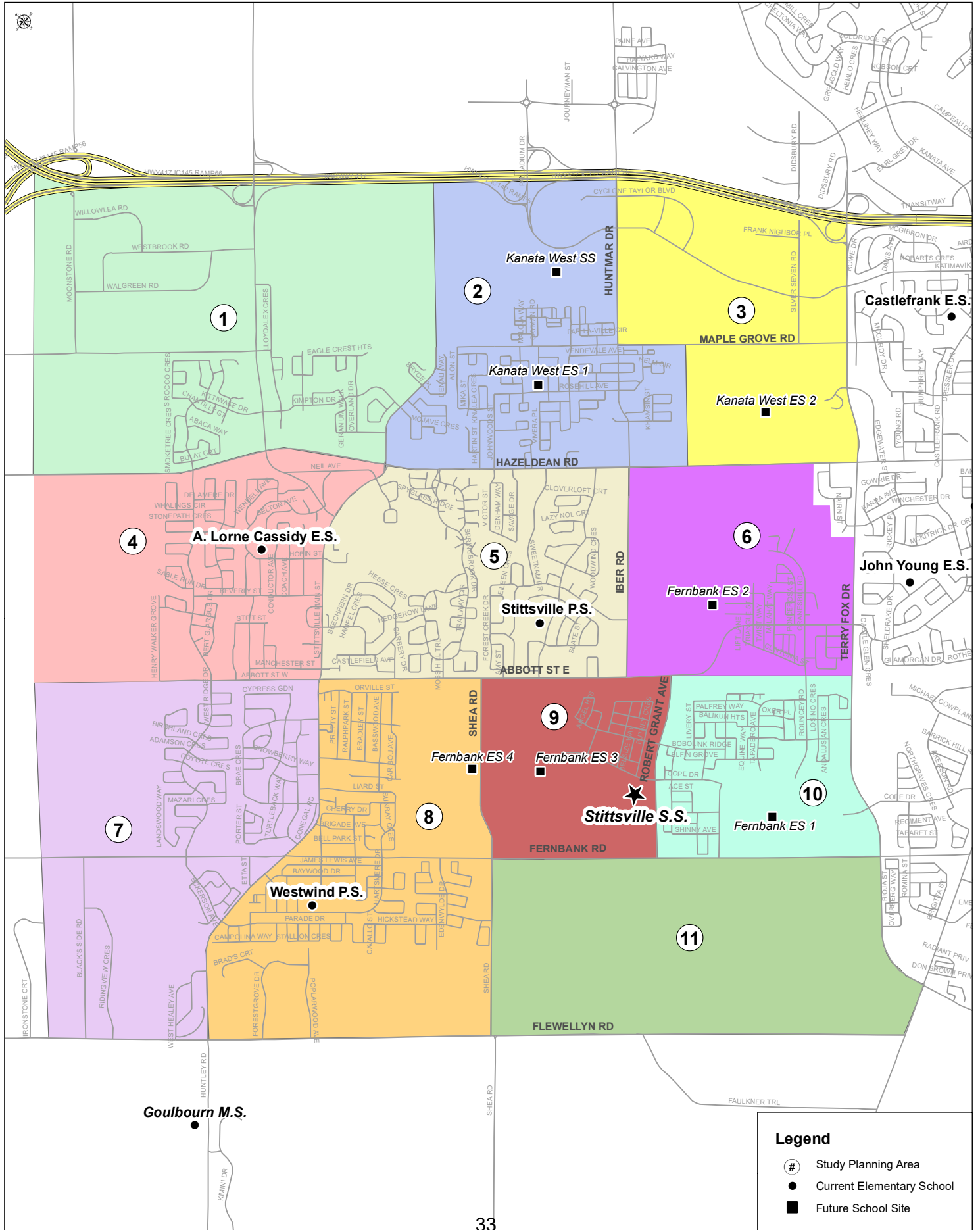
OTTAWA-CARLETON DISTRICT SCHOOL BOARD
Summary of Residential Permits and Enrolment by Planning Areas

Study Planning Area #	Total Number of Residential Permits Issued at End of 2018	Total Number of Residential Permits Issued at End of 2019	+/-	OCDSB Enrolment 31-Oct-18				OCDSB Enrolment 31-Oct-19				OCDSB Enrolment +/-			
				JK-6	7&8	9-12	7-12	JK-6	7&8	9-12	7-12	JK-6	7&8	9-12	7-12
1	1,370	1,414	44	172	44	65	109	198	50	68	118	26	6	3	9
2	3,055	3,188	133	441	69	110	179	397	68	119	187	-44	-1	9	8
3	0	0	0	0	0	0	0	0	0	0	0	0	0	0	0
4	1,792	1,796	4	204	47	101	148	202	58	98	156	-2	11	-3	8
5	2,777	2,777	0	211	44	106	150	208	40	94	134	-3	-4	-12	-16
6	754	1,076	322	32	12	10	22	94	22	39	61	62	10	29	39
7	1,552	1,594	42	237	40	93	133	226	54	89	143	-11	14	-4	10
8	1,648	1,919	271	208	33	103	136	216	64	108	172	8	31	5	36
9	34	246	212	0	0	0	0	1	1	1	2	1	1	1	2
10	1,568	2,095	527	163	24	59	83	211	26	73	99	48	2	14	16
11	28	28	0	0	0	0	0	0	0	0	0	0	0	0	0
12	na	na	na	73	13	35	48	77	20	32	52	4	7	-3	4
13	na	na	na	5	1	7	8	4	4	9	13	-1	3	2	5
Total	14,578	16,133	1,555	1746	327	689	1016	1834	407	730	1137	88	80	41	121

Sources: City of Ottawa - Residential Building Permits issued at the end of 2018 & 2019
Ottawa-Carleton District School Board - Enrolment data



Study Planning Areas

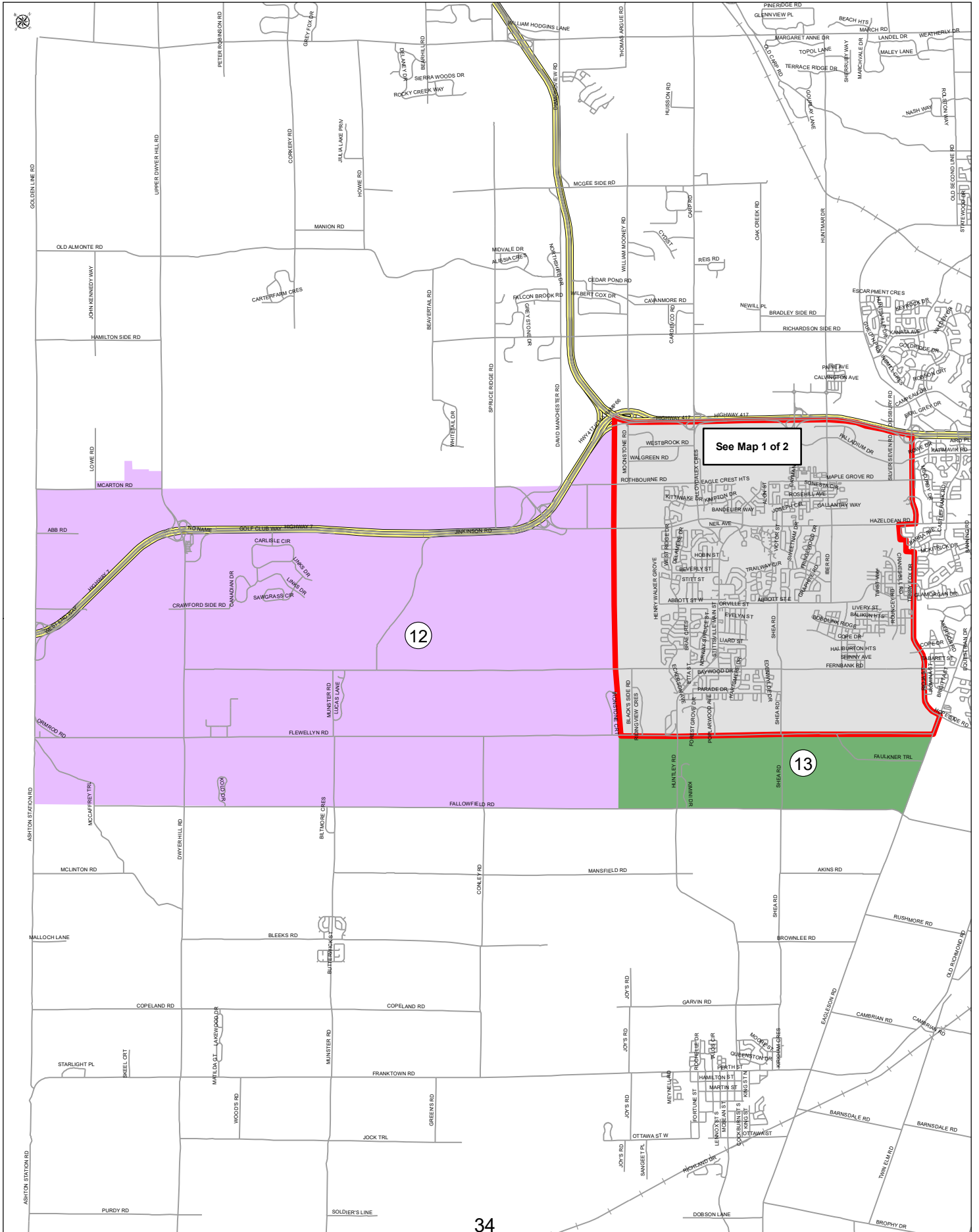


Legend

- # Study Planning Area
- Current Elementary School
- Future School Site



Study Planning Areas



NEW STITTSVILLE SECONDARY SCHOOL STUDY Revised TIMELINE

Activity	Date
<p>Notice of Intention to Commence Study and Approve Study</p> <ul style="list-style-type: none"> ➤ Board Approval of Study Consultation Plan and Timeline 	<p>22 October 2019</p>
<p>Consultative Stage</p> <ul style="list-style-type: none"> ➤ Formation of Working Group ➤ Working Group Meetings ➤ Public Consultation Meeting 	<p>November 2019</p> <p>27 November 2019 27 January 2020 9 March 2020 April 2020</p> <p>April 2020</p>
<p>Recommendation and Decision Making Stage</p> <ul style="list-style-type: none"> ➤ Regular Committee of the Whole Meeting – Presentation of Staff Recommendation Report ➤ Regular Board Meeting – Final Decisions 	<p>June 2020</p> <p>June 2020</p>
<p>Communication and Implementation Stage</p> <ul style="list-style-type: none"> ➤ Communication of Board Approved Decision ➤ Implementation of Board Approved Decision 	<p>June 2020</p> <p>September 2022</p>