



**BOARD  
Report No. 20-042**

**22 June 2020**

**New Stittsville Secondary School – Approval of Opening Grade Structure, Program, and Attendance Boundary**

**Key Contact: Michael Carson, Chief Financial Officer, 613-596-8211 ext. 8881**

**PURPOSE:**

1. To seek approval of the program, attendance boundary, and opening grade structure for the new Stittsville secondary school, and other associated changes.

**CONTEXT:**

2. In March 2018, the District received confirmation of capital funding from the Ministry of Education (MOE) for the construction of a 1353 pupil place secondary school to serve grade 7 to 12 students in the Stittsville area. The new school is currently scheduled to open to students in September 2022.

The District acquired the land for the new school in May 2019. The site is 6.54 hectares in size or just over 16 acres. It is located at the southwest corner of Robert Grant Avenue and Cope Drive, in the western portion of the Fernbank development area (see General Location Map attached as Appendix A).

At the Board meeting of 22 October 2019, trustees approved a consultation plan and timeline for the new Stittsville secondary school study (Report No.19-078) to determine the program, attendance boundary and opening grade structure, and other associated changes.

As part of the approved study process a public consultation meeting was to be held in April 2020. Given the restrictions in place in response to the current Covid-19 pandemic, the Board's ability to hold a standard public consultation meeting in a school setting was not possible.

In order to carry on with this process, the Board, at its meeting of 28 April 2020 approved an amendment to the previously approved consultation plan and timeline (Report No. 20-039). The revision permitted public consultation employing an alternate format of delivery (see Timeline and Consultation Plan attached as Appendix B).

## KEY CONSIDERATIONS:

3. Due to the lack of a local English public secondary school in Stittsville, secondary school students from this area are currently directed to either A.Y. Jackson Secondary School (SS) in Kanata or South Carleton High School (HS) in the Village of Richmond for grades 9 to 12. Intermediate students (grades 7 & 8) are directed to A. Lorne Cassidy Elementary School (ES), Goulbourn Middle School (MS), or Glen Cairn PS.

Stittsville (including the Fernbank area) is currently the fastest growing development area in the City of Ottawa. Over the past three years, building permits have been issued for an average of approximately 1,500 new residential units per year for this part of the District. As part of this study, future residential development was examined to determine if any changes to attendance boundaries were required to better balance enrolment growth among area schools.

Consideration was given to redirecting a future residential development area located west of the Carp River/Terry Fox Drive. This area is currently located within the attendance boundaries for Kanata area schools - Castlefrank Elementary School (ES) (K-3), Katimavik ES (4-8) and Earl of March SS (9-12). This area is more geographically aligned with Stittsville.

Where possible, the District prefers to have a family of schools configuration in place with uniform feeding patterns. The opening of a new secondary school in Stittsville allows for the opportunity to take steps towards creating this type of model for the Stittsville area.

At this time, it is not possible to fully align all area school attendance boundaries. Students in English with Core French (ENG) and Middle French Immersion (MFI) programs, residing south of Fallowfield Road are directed to Richmond Public School (PS)/Goulbourn Middle School (MS). Due to a lack of elementary instructional space south of Fallowfield Road, Early French Immersion (EFI) program students are directed to Stittsville area schools (A. Lorne Cassidy ES or Westwind PS/Goulbourn MS). All of these students residing south of Fallowfield Road feed to South Carleton HS for grades 9 to 12.

A future elementary school site has been reserved within the developing residential lands in the Village of Richmond. A new school in this area would provide the District with the opportunity to add a local EFI program south of Fallowfield Road and revise existing attendance boundaries and grade structures to potentially create a family of schools.

The opening of the new grade 7 to 12 secondary school in Stittsville will significantly impact the attendance boundaries and school enrolments of both South Carleton HS and Goulbourn MS.

Upon completion of the current MOE moratorium on pupil accommodation reviews, a comprehensive review of that part of the District, including South Carleton HS and Goulbourn MS, could be initiated.

4. The Working Group

The Board-approved consultation plan included the formation of a local working group. This group met three times between November 2019 and March 2020. The working group was comprised of school council representatives and principals from potentially impacted schools, Board staff, and local community association members. Trustees who represent potentially affected school communities were also invited to attend the meetings.

The role of the working group was to provide localized input and advice with regard to proposed options, community and neighbourhood alignments, and parental and family preferences as they relate to student movement.

Representatives provided their school councils with updates regarding the study and its on-going progress. They also collected feedback from their school communities to share with the working group.

The following summarizes the study objectives that helped guide the working group through this process:

- examine options for an opening grade structure, program offering, and attendance boundary for the new Stittsville secondary school;
- analyze options with consideration given to existing school and program feeding patterns and neighbourhood alignments;
- create a set of attendance boundaries and programs for local schools which, if possible, will help balance enrolments at local area schools, are logical and sustainable in the longer-term, and provide for viable student programming;
- account for future planning considerations such as the opening of additional schools in future years; and
- examine designated school directions for new and future residential development areas - are there boundary adjustments that could be considered to create more geographically logical attendance boundaries and/or better balance future enrolments between area schools?

The working group process was collegial and informative in providing local input regarding a variety of options. The options discussed took into account updated student enrolment and school-age population trends, residential development patterns, and student distribution data.

5. The Proposed Plan

At its last meeting in March 2020, the working group came to a consensus with respect to a proposed plan to be shared at the public consultation meeting. The plan was to be presented for the purpose of receiving input from parents/guardians, students, and members of the broader community.

The proposed plan that was to be presented at the public meeting was to include two possible opening grade structure options (grades 7 to 9 or grades 7 to 10), two attendance boundary options, and two kindergarten to grade 6 elementary school attendance boundary redirections.

Under a grade 7 to 10 opening grade structure with an attendance boundary that includes all of Stittsville and the rural area to the west, the school would open in September 2022, with a projected enrolment of 945 students and a utilization rate of 70%. If the rural area to the west were excluded from the new school's boundary, the school would open with an enrolment of 910 students and a utilization rate of 67%. Portables for instructional use would likely be required on site upon its second year of operation. The school's first cohort of grade 10 students would have attended grade 9 at another secondary school (A.Y. Jackson SS or South Carleton HS). This group of students would attend three different schools in three successive years, for grades 8, 9, and 10.

Under a grade 7 to 9 opening grade structure with the same attendance boundary, the school would open in September 2022, with a projected enrolment of 723 students and a 53% utilization rate. If the rural area to the west were excluded from the new school's boundary, the school would open with an enrolment of 694 students and a utilization rate of 51%. Portables would most likely not be required until its third year of operation. This option would allow students who started grade 9 at one of the sending schools (A.Y. Jackson SS or South Carleton HS) to remain at that school until the completion of grade 12.

As stated earlier, due to Covid-19 restrictions, holding a standard public meeting to present the proposed plan and receive public feedback was not possible. An online public consultation process was initiated to gather public input on a draft staff recommendation report. The draft recommendations were based on the proposed plan. The feedback received was reviewed and help to inform this recommendation report.

6. The Recommendations – New Stittsville Secondary School

Staff is recommending that the new Stittsville secondary school open with a 7 to 9 grade structure and add one grade per year thereafter until reaching its full complement of grades, 7 to 12. The school would offer an ENG program, an EFI program, and an MFI program for grade 7 and 8 students. It would also offer ENG and French Immersion (FI) programs for grade 9 to 12 students.

The new Stittsville secondary school attendance boundary would generally be comprised of the kindergarten (K) to grade 6 ENG attendance boundaries of A. Lorne Cassidy ES, Stittsville PS, Westwind PS, the future new Fernbank

elementary school and the portion of the Castlefrank ES (K-3)/Katimavik ES (4-8) attendance boundary located west of the Carp River/Terry Fox Drive (see Appendix C).

Under the recommended plan, the school's projected 2022 enrolment as a grade 7 to 9 school would be 723 students with a utilization rate of 53% (see Appendix D). In September 2025 with a full complement of grades (7 to 12), the enrolment is projected to be 1,656 with a utilization rate of 122%. It is anticipated the school would most likely begin to require portables on site for instruction in its third year of operation.

It should be noted that typically, a new school does not open with a full complement of grades. The recommendation would allow existing grade 9 to 12 students from sending schools (A.Y. Jackson SS & South Carleton HS) to remain at that school to graduate with their grade cohort.

The recommended attendance boundaries take steps toward creating a family of schools feeding pattern. All Stittsville area elementary schools would have a standardized K to 6 grade structure. All students at these schools would feed to the new school for grade 7, with the exception of those who reside south of Fallowfield Road or east of Eagleson Road.

7. The Recommendations – Carp River/Terry Fox Drive  
*A kindergarten to grade 6 attendance boundary redirection between Stittsville PS and Castlefrank ES (K-3)/Katimavik ES (4-8) – West of the Carp River/Terry Fox Drive (see Appendix E).*

This portion of the District is more aligned geographically with the Stittsville area than Kanata. The recommended K to 6 redirection to a Stittsville area school, would be consistent with the grade 7 to 12 attendance boundary revisions being recommended for this area. There are currently no students residing within this future residential development area.

It is recommended that this redirection be implemented for September 2020 prior to any students moving into the area.

This change would redirect K to grade 6 students residing west of the Carp River/Terry Fox Drive in approximately 1,825 future residential units located within the current Castlefrank ES/Katimavik ES attendance areas, to Stittsville PS. These students would feed to the new Stittsville SS for grades 7 to 12 upon its opening.

8. The Recommendations – A. Lorne Cassidy ES/Stittsville PS  
*A kindergarten to grade 6 attendance boundary redirection between A. Lorne Cassidy ES and Stittsville PS (see Appendix F).*

Relocating the grade 7 and 8 program at A. Lorne Cassidy ES to the new Stittsville secondary school would result in additional available instructional space at A. Lorne Cassidy ES. In order to make best use of this surplus space, a

kindergarten to grade 6 attendance boundary redirection between A. Lorne Cassidy ES and Stittsville PS, to increase enrolment at the school, and better balance new and future residential development areas, is being recommended.

Students residing in the redirected area, attending Stittsville PS, the year prior to the opening of the new Stittsville secondary school, and their siblings, born the year of the new school's opening or earlier, would be given a one-time option to remain/attend Stittsville PS until the completion of grade 6. These students would be provided transportation if they are eligible under Student Transportation Policy P.127 TRA and Procedure PR.556 TRA.

There is currently no significant future residential development planned within the current A. Lorne Cassidy ES attendance boundary, however, there are over 3,000 future residential units expected within the Stittsville PS catchment. This revision would redirect a portion of the students residing in existing and future residential units north of Hazeldean Road from Stittsville PS to A. Lorne Cassidy ES. It would also redirect a small area of existing homes south of Hazeldean Road and east of Stittsville Main Street (Amberlakes Drive, Slowgrass Crescent, Ravenscroft Court and Wildpine Court).

#### 9. The Recommendations - Individual School Summaries

- **A.Lorne Cassidy ES** would become a K to grade 6 ENG/EFI/MFI school serving all of its existing attendance boundary area, and a redirected portion of the Stittsville PS attendance boundary;
- The grade 7 and 8 program would be relocated to new Stittsville secondary school;
- Students residing north of Fallowfield Road would feed to new Stittsville secondary school for grades 7 to 12, excluding those who live east of Eagleson Road;
- Students residing south of Fallowfield Road or east of Eagleson Road would feed to Goulbourn MS for grades 7 and 8, and continue to feed to South Carleton HS for grades 9 to 12.; and
- MFI students would continue to feed into the school at grade 4 from Stittsville PS, Westwind PS, and new Fernbank elementary school upon its future opening (TBD).
  
- **New Fernbank elementary school** (opening date TBD) would remain a K to grade 6 ENG/EFI school to serve students within its previously approved attendance boundary area;
- Currently, students residing within its attendance boundary are being accommodated at John Young ES, which is experiencing significant accommodation pressures;
- Beginning September 2020, an approved interim measure would redirect some of these students to Westwind PS, until the new elementary school can be opened; and
- Students would feed to new Stittsville secondary school for grades 7 to 12.

- **Stittsville PS** would remain a K to grade 6 ENG/EFI school serving students within its revised attendance boundary area;
  - Students would feed to new Stittsville secondary school for grades 7 to 12; and
  - Students residing in the area being redirected to A. Lorne Cassidy ES and attending Stittsville PS the year prior to the opening of the new Stittsville secondary school and their siblings born the year of the new school's opening or earlier, would be given a one-time option to remain/attend Stittsville PS until the completion of grade 6.
- 
- **Westwind PS** would remain a K to grade 6 ENG/EFI school serving students within its existing attendance boundary area;
  - Students residing north of Fallowfield Road would feed to new Stittsville secondary school for grades 7 to 12, excluding those who live east of Eagleson Road; and
  - Students residing south of Fallowfield Road or east of Eagleson Road would continue to feed to Goulbourn MS for grades 7 and 8, and South Carleton HS for grades 9 to 12.
- 
- **Goulbourn MS** would remain a grade 6 to 8 ENG/MFI and a grade 7 and 8 EFI school with a reduced attendance boundary, generally serving students residing south of Fallowfield Road. The portion of its current attendance boundary north of Fallowfield Road would be redirected to new Stittsville secondary school for grades 7 and 8, except for the portion east of Eagleson Road which would remain directed to Goulbourn MS;
  - Richmond PS ENG/MFI students would continue to feed into the school at grade 6;
  - A. Lorne Cassidy ES students residing south of Fallowfield Road or east of Eagleson Road would feed into the school at grade 7;
  - Westwind PS students residing south of Fallowfield Road or east of Eagleson Road would continue to feed into the school at grade 7; and
  - Grade 8 students would continue to feed to South Carleton HS for grades 9 to 12.
- 
- **South Carleton HS** would remain a grade 9 to 12 ENG/FI school with a reduced attendance boundary, generally serving students residing south of Fallowfield Road. The portion of its attendance boundary north of Fallowfield Road would be redirected to new Stittsville Ssecondary school for grades 9 to 12, except for the portion east of Eagleson Road which would remain directed to South Carleton HS; and
  - Existing students in grades 9, 10, 11, and 12 residing within the New Stittsville SS attendance boundary would remain at South Carleton HS to graduate with their grade cohort.

- **Glen Cairn PS** would remain a grade 7 and 8 ENG/EFI/MFI school with a reduced attendance boundary. The Fernbank portion of its attendance boundary west of the Carp River/Terry Fox Drive would be redirected to new Stittsville secondary school; and
- Students residing east of the Carp River/Terry Fox Drive would continue to feed to A.Y. Jackson SS for grades 9 to 12.
- **A.Y. Jackson SS** would remain a grade 9 to 12 ENG/FI school with a reduced attendance boundary. The Fernbank portion of its attendance boundary west of the Carp River/Terry Fox Drive would be redirected to new Stittsville secondary school; and
- Existing students in grades 9, 10, 11, and 12 residing within the new Stittsville Secondary school attendance boundary would remain at A.Y. Jackson SS to graduate with their grade cohort.
- **Castlefrank ES** would remain a K to 3 ENG/EFI school with a reduced attendance boundary. A future Kanata West residential development area west of the Carp River/Terry Fox Drive would be redirected to Stittsville PS; and
- Students residing east of the Carp River/Terry Fox Drive would continue to feed to Katimavik ES for grades 4 to 8.
- **Katimavik ES** would remain a grade 4 to 8 ENG/EFI school with a reduced attendance boundary. A future Kanata West residential development area west of the Carp River/Terry Fox Drive would be redirected to Stittsville PS for grades 4 to 6 and new Stittsville secondary school for grades 7 and 8; and
- Students residing east of the Carp River/Terry Fox Drive would continue to feed to Earl of March SS for grades 9 to 12.
- **Earl of March SS** would remain a grade 7 to 12 school with a reduced grade 9 to 12 attendance boundary. A future Kanata West residential development area west of the Carp River/Terry Fox Drive would be redirected to new Stittsville secondary school for grades 9 to 12.
- **Special Education Program Classes** - The relocation of current and the placement of future Special Education program classes at study area schools would be made through a separate process coordinated by the Learning Support Services Department.

10. The Recommendations – Considerations

Grade 8 students at new Stittsville secondary school its first year from both Glen Cairn PS and Goulbourn MS would have to attend three different schools in three successive years for grades 6, 7, and 8.

Under the recommendations two different feeding patterns would be created for EFI students attending A. Lorne Cassidy ES and Westwind PS. Students



residing north of Fallowfield Road would feed to the new Stittsville secondary school for grades 7 to 12, excluding those residing east of Eagleson Road. Students residing south of Fallowfield Road or east of Eagleson Road would feed to Goulbourn MS for grades 7 and 8, and South Carleton HS for grades 9 to 12.

An anomaly would be that Goulbourn MS would not be physically located within any of its attendance boundaries (ENG, EFI & MFI). Note that Goulbourn MS is currently not located within its MFI program attendance boundary.

In order to address this situation, the working group discussed setting Flewellyn Road, rather than Fallowfield Road, as the southern attendance boundary limit for new Stittsville secondary school and its feeder schools. It was agreed, however, that Fallowfield Road is the most logical division as it is the one used by most community programs.

11. Alternate Attendance Boundary Options

**Working Option B – Rural Area West of Stittsville**

This option is similar to the recommended plan, with the exception that the rural area west of Stittsville would not be within the attendance boundary for the new Stittsville secondary school.

The students residing in the rural area would remain directed to A. Lorne Cassidy ES for K to 6 ENG, EFI and grades 4 to 6 MFI. They would then feed to Goulbourn MS for grades 7 to 8 ENG, EFI and MFI and on to South Carleton HS for grades 9 to 12 (see Alternate Option B maps as Appendix G). There are approximately 50 grade 7 to 12 students residing in this area.

12. **Working Option C – An East-West Attendance Boundary**

Under an east-west attendance boundary option, more students would remain at A. Lorne Cassidy ES and South Carleton HS, and it would take longer for overcrowding to occur at the new school. Stittsville Main Street was used as the main east-west boundary division for the three options examined by the working group (see Alternate Option C map as Appendix H).

Capital funding was provided to serve Stittsville area students, however, under an east-west attendance boundary option, not all Stittsville area students would be accommodated at the new school. Students residing in the longer established Stittsville neighbourhoods would remain designated to attend South Carleton HS.

While this more compact attendance boundary design would slow accommodation pressures at the new school, it would delay the need for an addition to the new school and/or capital funding for the next secondary school to serve the remaining Stittsville area students.

There are approximately 375 to 560 grade 7 to 12 students currently residing in the areas north of Fallowfield Road that would not be directed to the new Stittsville secondary school under the three east-west attendance boundary options considered.

13. **Designated Schools for Fallowfield Village**

Fallowfield Village is a small residential area located north of Fallowfield Road, between Old Richmond Road and Moodie Drive. The village contains 72 residential lots, and there are approximately 25 K to grade 12 OCDSB students residing there. The students are currently directed to Richmond PS (K-5 ENG, 4-5 MFI), Westwind PS (K-6 EFI), Goulbourn MS (6-8 ENG & MFI, 7-8 EFI), and South Carleton HS (9-12).

A request was received as part of this study regarding whether consideration could be given to redirecting students from the village to Stittsville area schools, including the new Stittsville secondary school (see Appendix I).

Although the number of students in this area is small, significant accommodation pressures are anticipated for the new Stittsville secondary school and its feeder schools. Stittsville (including the Fernbank area) is currently the fastest growing residential development area in the City of Ottawa and it will take many years before full build-out is reached. It would therefore not be prudent to add more students to Stittsville area schools at this time.

There was also discussion about the possibility of considering geographically closer schools in Kanata South or Nepean. Both of these areas have a significant amount of ongoing new residential growth, and accommodation pressures exist at many of the schools in these areas. In this regard, a boundary revision between John McCrae SS/Cedarview MS and Longfields-Davidson Heights SS was recently approved to better balance significant accommodation pressures in Nepean.

Although the issue was raised at the working group level, only one response from the public has been received on the topic to date. Given the accommodation pressures that either exist or are projected at potential areas identified for redirection, staff are of the opinion that it is not the right time to recommend a change to current school designations for Fallowfield Village.

14. Input Received Regarding the Draft Staff Recommended Plan

An online public consultation process was held from 11 May 2020 to 10 June 2020, to gather input from parents/guardians, students, and members of the broader community on the draft staff recommendation report. Feedback was received using a study email address and a Thoughtexchange™ process.

Over 50 emails were received and 190 participants (71% were parents/guardians; 19% students; 4% staff; and 6% community members) took part in the Thoughtexchange™ process sharing 122 thoughts and assigning 2,619 stars to those thoughts.

The following summarizes the most numerous areas of discussion during the online public consultation:

- agreement with the draft staff recommended plan;
- excitement around the opening of the first English public secondary school in Stittsville;
- do not implement Option C;
- why is the new school being built so small?;
- open new school with a 7 to 10 grade structure;
- prefer Option B;
- do not want the September 2022 opening date delayed;
- provide a sibling provision to allow students to attend A.Y. Jackson SS or South Carleton HS with their older sibling;
- provide an option for students to choose to attend the new school or A.Y. Jackson SS/South Carleton HS;
- what is the future plan for South Carleton HS and all of its feeder schools, including Goulbourn MS and Richmond PS?;
- concern over projected enrolment at Goulbourn MS and/or South Carleton HS;
- prefer Option C;
- want a Riverside South Secondary School;
- want a Half Moon Bay Secondary School;
- expand the attendance boundary for South Carleton HS;
- new school attendance boundary is too large;
- expand the new school's attendance boundary;
- open the new school with a 7 to 11 or 7 to 12 grade structure;
- if the opening date is delayed would prefer the new school to open with a 7 to 10 grade structure rather than a 7 to 9, to allow students who thought they would be attending to still attend; and
- include the area behind Sobeys in the attendance boundary for the new school;

Overall the draft staff recommended plan was well received with most responses being in favour of the plan as it is. The least liked option was C (an east-west attendance boundary), which would provide a more compact catchment but excludes portions of the Stittsville area from the attendance boundary of the new school.

There is concern over the size of the new school not being able to accommodate all Stittsville area students in the future. This school design was used previously to build Longfields-Davidson Heights SS in South Nepean. Similar to that school, new Stittsville secondary school is being planned with the option to accommodate a future addition on site. The OCDSB also has a second designated secondary school site in the area where another school could be built and opened in the future.

The amount of new residential development in the larger Stittsville area, in combination with providing local accommodation to students residing in the Village of Stittsville proper, makes it unfeasible to build a single school which could serve all students in those areas at full build-out. The ultimate plan for accommodating grade 7 to 12 students in the area will occur through a staged approach over a long period of time, and will require the funding and construction of additional space.

There are concerns over the impact that the resulting lower enrolments at South Carleton HS and Goulbourn MS will have on the number of classes, breadth of course offerings, and extracurricular activities.

Staff is recommending that upon the completion of the current MOE moratorium on pupil accommodation reviews, a comprehensive review be initiated for this part of the District that includes South Carleton HS and all its elementary feeder schools.

This review would examine the specific needs of this part of the District, and include representatives from South Carleton HS and its feeder schools.

Some families expressed concerns over siblings having to attend different secondary schools - older sibling at A.Y. Jackson SS or South Carleton HS while younger sibling designated to attend the new school. With the long-awaited opening of the new school it is the expectation that students would want to attend their new local school. Not providing a sibling provision will ensure a sufficient number of students in each cohort in order to offer a variety of courses and extracurricular activities at the new school.

15. Staff Recommendation

Staff is recommending a plan which was guided by the study's key objectives while taking into consideration input from the working group, parents/guardians, students, and the public.

The recommended attendance boundaries work towards balancing enrolments at Stittsville area schools, are logical and align program feeding patterns, account for new and future residential development and future school openings, and take steps towards creating a Family of Schools configuration for the Stittsville area.

Note that all of the recommendations would come in to affect upon the opening of the new Stittsville secondary school, except for Recommendation B which would be implemented for September 2020.

Staff also recommends that a future pupil accommodation review of South Carleton High School and all its elementary feeder schools (K-8) be undertaken to examine the needs of these schools.

## **RESOURCE IMPLICATIONS:**

16. The cost of conducting the study has been managed within existing departmental budgets.

## **COMMUNICATION/CONSULTATION ISSUES:**

17. As noted under the context section of this report, an alternate method for conducting the public consultation meeting portion of the study to receive parent/guardian, student, and community input was approved by Board.

This approach included the following:

- Notice to the public of the virtual public consultation format, which included messaging from study school principals, school and school council email notice, OCDSB website notice and local community newspaper(s);
- Posting of a draft staff recommendation report and PowerPoint video presentation based on the draft report;
- Study Reports and working group packages posted for reference;
- Online email address and Thoughtexchange™ to receive public input;
- Updates of FAQs and answers provided on an ongoing basis; and
- Consultation duration of approximately 30 calendar days.

A PowerPoint presentation video was posted on the OCDSB website which presented highlights of a draft staff recommendation report based on input provided by the working group. The report outlined the boundary options being put forth for consideration, included background material considered throughout the working group process.

Over 50 feedback emails were received from the public and 190 participants (71% were parents/guardians; 19% students; 4% staff; and 6% community members) took part in the Thoughtexchange™ process sharing 122 thoughts and assigning 2,619 stars to those thoughts.

The amount of public input received was similar to what we would have expected under a standard public consultation process undertaken by the OCDSB for the opening of a new school.

## **STRATEGIC LINKS:**

18. The opening of a secondary school within the developing Fernbank area will provide the District with the ability to serve Stittsville area students locally.

The addition of a school within its own caring community is consistent with the objectives of the Strategic Plan by improving equity of access to a choice of high quality programs in an environment which fosters innovation and creativity. The provision of additional new school facilities within a growth area of the District provides opportunity for each of the Strategic Plan's three key priority areas to be addressed; creating a culture of innovation, caring and social responsibility.

## RECOMMENDATIONS:

- A. THAT an opening grade structure, program offering, and attendance boundary for the new Stittsville secondary school, and revised attendance boundaries for A. Lorne Cassidy Elementary School, Glen Cairn Public School, Goulbourn Middle School, Katimavik Elementary School, A.Y. Jackson Secondary School, Earl of March Secondary School, and South Carleton High School, be approved according to Appendix C of Report No.20-042, and implemented upon its opening;
- B. THAT revised kindergarten to grade 6 English with Core French Program and Early French Immersion Program attendance boundaries for Castlefrank Elementary School (K-3), Katimavik Elementary School (4-6), and Stittsville Public School (K-6), be approved according to Appendix E of Report No. 20-042, and implemented for September 2020;
- C. THAT revised Kindergarten to Grade 6 English with Core French Program and Early French Immersion Program attendance boundaries for A. Lorne Cassidy Elementary School and Stittsville Public School be approved according to Appendix F of Report No. 20-042, and implemented upon the opening of the new Stittsville secondary school;
- D. THAT students impacted by Recommendation C of Report No. 20-042 and their siblings born in the year new Stittsville secondary school opens or earlier be given a one-time option to remain at /attend Stittsville Public School until the completion of grade 6 and be provided transportation if they are eligible under Student Transportation Policy P.127 TRA and Procedure PR.556 TRA; and
- E. THAT any student on a cross boundary transfer at a school whose program cohort is being relocated to another school as a result of approved recommendations in Report 20-042 be allowed to move with their program cohort without having to reapply for a transfer.

---

Michael Carson  
Chief Financial Officer

---

Camille Williams-Taylor  
Director of Education and  
Secretary of the Board

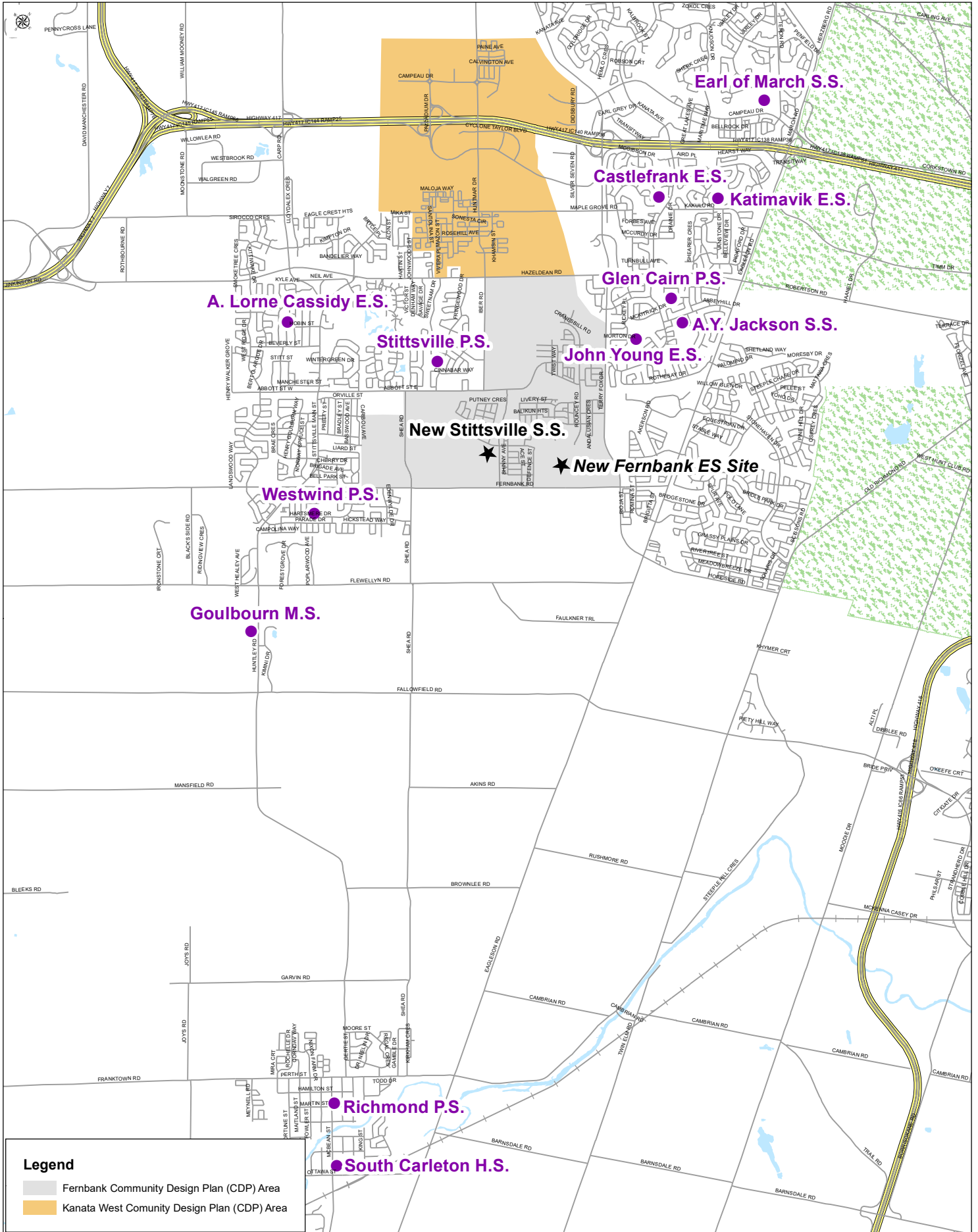
## APPENDICES

- Appendix A General Location Map – New Stittsville Secondary School Study
- Appendix B New Stittsville Secondary School Study Timeline and Consultation Plan
- Appendix C New Stittsville Secondary School Attendance Boundary Maps
- Appendix D Five Year Projected Enrolments for Study Area Schools
- Appendix E K to 6 ENG & EFI Attendance Boundary Redirection Map – Between Castlefrank ES/Katimavik ES and Stittsville PS
- Appendix F K to 6 ENG & EFI Attendance Boundary Redirection Maps – Between A. Lorne Cassidy ES and Stittsville PS
- Appendix G Alternative Option B Attendance Boundary Composite Maps
- Appendix H Alternative Option C East-West Attendance Boundaries New Stittsville Secondary School (9 to 12) Map
- Appendix I Considered Fallowfield Village Redirection Maps



OTTAWA-CARLETON DISTRICT SCHOOL BOARD

# General Location Map - New Stittsville S.S. Site



## NEW STITTSVILLE SECONDARY SCHOOL STUDY TIMELINE – as amended

Activity	Date
<p><b>Notice of Intention to Commence Study and Approve Study</b></p> <ul style="list-style-type: none"> <li>➤ Board Approval of Study Consultation Plan and Timeline</li> </ul>	<p>October 2019</p>
<p><b>Consultative Stage</b></p> <ul style="list-style-type: none"> <li>➤ Formation of Working Group</li> <li>➤ Working Group Meetings</li> <li>➤ Public Consultation Meeting - Revised Consultation &amp; Extended Format</li> </ul>	<p>November 2019</p> <p>27 November 2019 27 January 2020 9 March 2020</p> <p>May-June 2020</p>
<p><b>Recommendation and Decision Making Stage</b></p> <ul style="list-style-type: none"> <li>➤ Regular Committee of the Whole or Special Board – Presentation of Staff Recommendation Report</li> <li>➤ Regular or Special Board Meeting – Final Decisions</li> </ul>	<p>June 2020</p> <p>June 2020</p>
<p><b>Communication and Implementation Stage</b></p> <ul style="list-style-type: none"> <li>➤ Communication of Board Approved Decision</li> <li>➤ Implementation of Board Approved Decision</li> </ul>	<p>June 2020</p> <p>September 2022</p>





# CONSULTATION PLAN(REVISED)

(REFERENCES: POLICY P.110.GOV AND PROCEDURE PR.644.GOV)

<b>DATE:</b>	April 2020
<b>PROJECT:</b> (Project name, Letter of Transmittal, etc.)	<b>New Stittsville Secondary School Study – Approval of Alternate Public Meeting Consultation Format and Amendment to Study Timeline</b>
<b>CONTACT / PROJECT LEAD</b> (Name, telephone, email):	Michael Carson, Chief Financial Officer, (613) 596-8211 ext. 8881, <a href="mailto:Michael.Carson@ocdsb.ca">Michael.Carson@ocdsb.ca</a>
<b>WHAT?</b>	
<b>1. WHAT IS THE PURPOSE OF THE CONSULTATION?</b> (Describe project scope, nature of consultation, decision to be made, and any relevant information)	
Request to proceed to the public consultation meeting, following the series of working group meetings, previously attended by the impacted area school communities, regarding the proposed new Stittsville secondary school boundary and other associated changes. Due to current the Covid 19 Pandemic, and government imposed physical distancing and restrictions to large group gatherings, an alternate means of consultation must be undertaken.	
<i>The scope of the consultation included six elementary and three secondary schools; A. Lorne Cassidy ES, Stittsville PS, Goulbourn MS, South Carleton HS, Glen Cairn PS, AY Jackson SS, Castlefrank ES, Katimavik ES, and Earl of March SS.</i>	
<i>The consultation process will serve to implement recommendations regarding the attendance boundary, program, and opening grade structure for the new grade 7 to 12 secondary school. Those changes may result in associated revisions to some area schools not directly impacted by the new school opening.</i>	
<b>WHY?</b>	
<b>2. WHY ARE YOU CONSULTING?</b> (Check all that apply)	
<input checked="" type="checkbox"/> To seek advice, informed opinion or input for consideration prior to decision-making?	
<input checked="" type="checkbox"/> To share information and/or create awareness about a subject/potential recommendations/decision yet to be made?	
<input type="checkbox"/> To share information and awareness about a subject/recommendation/decision that has been made?	
<input type="checkbox"/> Other? (Please explain)	
<b>3. HOW DOES THIS CONSULTATION LINK TO THE OCDSB STRATEGIC PLAN, DISTRICT IMPROVEMENT PLAN, BUDGET, ANNUAL DISTRICT GOALS AND OBJECTIVES AND/OR RELEVANT MINISTRY / OCDSB POLICIES OR PROCEDURES</b> (if applicable)?	
<i>The consultation will seek to recommend a plan to implement an opening grade structure, program, and attendance boundary for the new school. To minimize disruption to families and students it will also likely recommend the phasing of some of the recommended changes.</i>	
<i>The process will strive to make effective use of District facilities, improve student access to viable programming and appropriate instructional resources. As well, there is the overriding goal of improving student achievement through the provision of strong educational programming in safe, healthy, secure and accessible learning environments.</i>	



# CONSULTATION PLAN

(REFERENCES: POLICY P.110.GOV AND PROCEDURE PR.644.GOV)

## WHO?

### 4. WHO WILL BE CONSULTED? (Key stakeholders) (Check all that apply)

#### OCDSB Community

- Students
- Parents/guardians
- School council(s)
- Ottawa Carleton Assembly of School Councils
- Advisory committees (Specify below)
- Special Education Advisory Committee, etc
- Other \_\_\_\_\_

#### Internal to OCDSB

- Trustees
- Superintendents
- Principals and/or Vice-principals
- Managers
- District staff
- Federations
- Other \_\_\_\_\_

#### External / Other (please identify)

- Agencies/associations \_\_\_\_\_
- Community groups \_\_\_\_\_
- General Public \_\_\_\_\_
- Other governments \_\_\_\_\_
- Other \_\_\_\_\_

Please describe or expand on who will be consulted and any partners in the consultation:

### 5. HAVE ANY OF THESE STAKEHOLDERS BEEN INVOLVED IN INFORMAL CONSULTATION AS PART OF THE DEVELOPMENT OF THIS PLAN?

In accordance with section 4.3 of Policy P.110.GOV, it is expected that informal consultation has taken place with representative stakeholders to obtain their suggestions prior to finalizing this plan. Please describe below. (If this informal consultation did not take place, explain why it was not feasible.)

*Yes, local Trustees, the Superintendent of Instruction for area schools, and the Chief Financial Officer.*

## HOW?

### 6. HOW WILL STAKEHOLDERS BE MADE AWARE OF THIS CONSULTATION PROCESS? (Check all that apply)

- Media advertisement (print and/or radio)
- Letter distribution
- School council(s)
- Ottawa Carleton Assembly of School Councils
- School newsletter
- Website (schools and/or OCDSB sites)
- Other \_\_\_\_\_

Please describe how stakeholders will be made aware of the consultation process and any special requirements for consultation (translation, alternate formats, etc)?

Stakeholders will be informed via school email, school parent council email which will include online format, date and duration and opportunity for feedback for the alternate method of consultation.

### 7. HOW WILL THE CONSULTATION BE CARRIED OUT? (Check all that apply)

- Focus groups
- Interviews
- Mail-out or email circulation
- Open houses / workshops / cafes
- School council(s)
- Ottawa Carleton Assembly of School Councils
- Public meetings : **Online Format only – extended timeframe**
- Survey / questionnaire
- Web-based notice / Web-based comments
- Other \_\_\_\_\_

Please describe:



# CONSULTATION PLAN

(REFERENCES: POLICY P.110.GOV AND PROCEDURE PR.644.GOV)

**Appendix B (2)  
to Report 20-039**

WHEN?		
<b>8. PROJECT PLAN FOR CONSULTATION (KEY ACTIVITIES AND COMMUNICATIONS)<sup>1</sup>:</b> <b>i.e. Identify plan approval dates; Timelines for awareness of consultation; Specific consultation initiatives; Timelines for analysis; Date for Committee/Board deliberation; Evaluation of consultation</b>		
<b>TARGETTED DATE FOR FINAL DECISION:</b>	<b>June 2020</b>	
<b><u>PROJECTED DATE(S)</u></b>	<b><u>ACTIVITY/MILESTONE</u></b>	<b><u>NOTES**</u></b>
October 2019	Board Approval of Study Consultation Plan and Timeline	
November 2019	Formation of Working Group	
November 2019 to March 2020	Working Group Meetings	
May-June 2020	Public Consultation Meeting – Alternate Online Format	
June 2020	Committee of the Whole Meeting – Presentation, Debate, and Recommendations – <span style="color: red;">Format to be determined based on current government imposed group gathering restrictions.</span>	
June 2020	Regular Board Meeting – Final Study Decisions - <span style="color: red;">Format to be determined based on current government imposed group gathering restrictions.</span>	
<b>**In filling out this chart, please note:</b> <ul style="list-style-type: none"> <li>▪ <b>the materials, reports or resources that will be distributed to stakeholders, either in advance or at the session;</b></li> <li>▪ any constraints such as necessary deadlines, availability of stakeholders; and</li> <li>▪ the timelines for communicating the outcome/related decisions reached to those consulted.</li> </ul>		

<sup>1</sup> Outline provides information on the minimal number of activities proposed, which may be amended to intensify the process if required. Further information on the overall project/initiative and the specific consultation plan and process can be provided in the Letter of Transmittal to Board.  
 OCDSB Form 644: Consultation Plan (April 2009)

**9. HOW WILL THE RESULTS OF THE CONSULTATION AND THE RATIONALE OF THE FINAL DECISION BE COMMUNICATED TO ALL CONTRIBUTORS TO THE PROCESS? (Check all that apply)**

- |   |  |
|---|--|
| <input checked="" type="checkbox"/> Email circulation             | <input checked="" type="checkbox"/> School / principal communications / newsletter |
| <input checked="" type="checkbox"/> Letter distribution           | <input checked="" type="checkbox"/> Website (schools and/or OCDSB sites)           |
| <input type="checkbox"/> Letter of Transmittal to committee/Board | <input type="checkbox"/> Media reports   |
|   | <input type="checkbox"/> Other   |

Please describe:

**OTHER**

**10. ESTIMATED COSTS FOR THE CONSULTATION\*** (i.e. advertising, facilities, translation, materials):

*Consultation costs will be managed within existing departmental budgets.*

*\* Note that the consulting body bears responsibility for the costs of the consultation.*

**11. EVALUATION:**

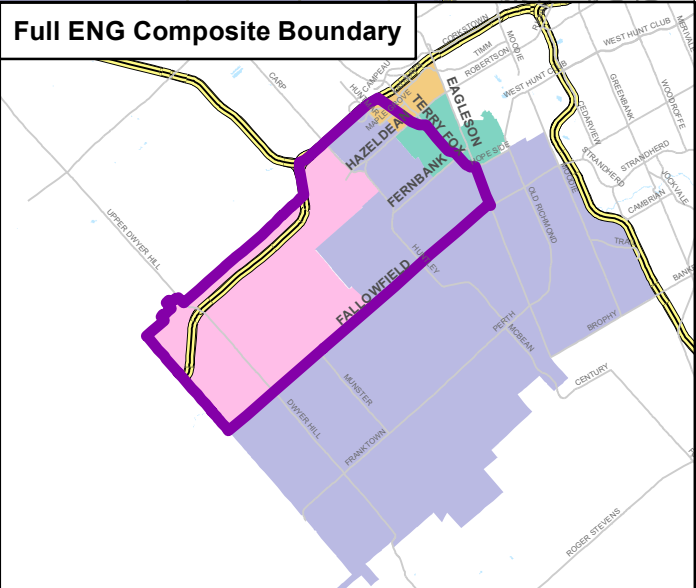
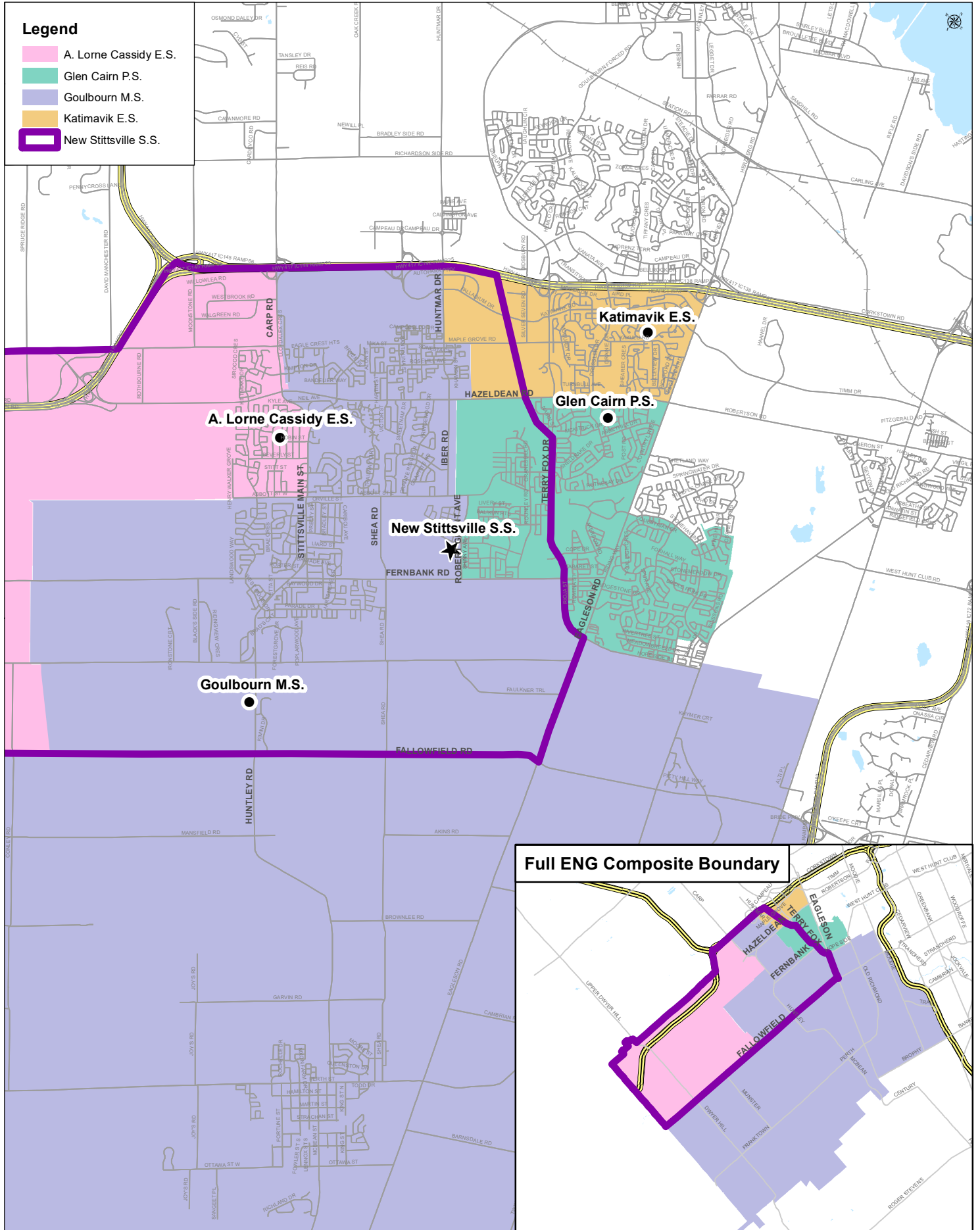
Please specify the method(s) you plan to use to assess the effectiveness and success of this consultation process. (e.g., outcomes/results, satisfaction of participants, debriefs, questionnaires/evaluation sheet collected from participants, peer review, school council meeting discussion with date, etc.)

*As this is an alternate method of Public Meeting Consultation being employed a survey could be issued to participants and study area communities to determine the effectiveness and receipt of comments and ideas for modifications etc.*



OTTAWA-CARLETON  
DISTRICT SCHOOL BOARD

# Recommended Attendance Boundaries New Stittsville SS Study 7 to 8 ENG Composite Map

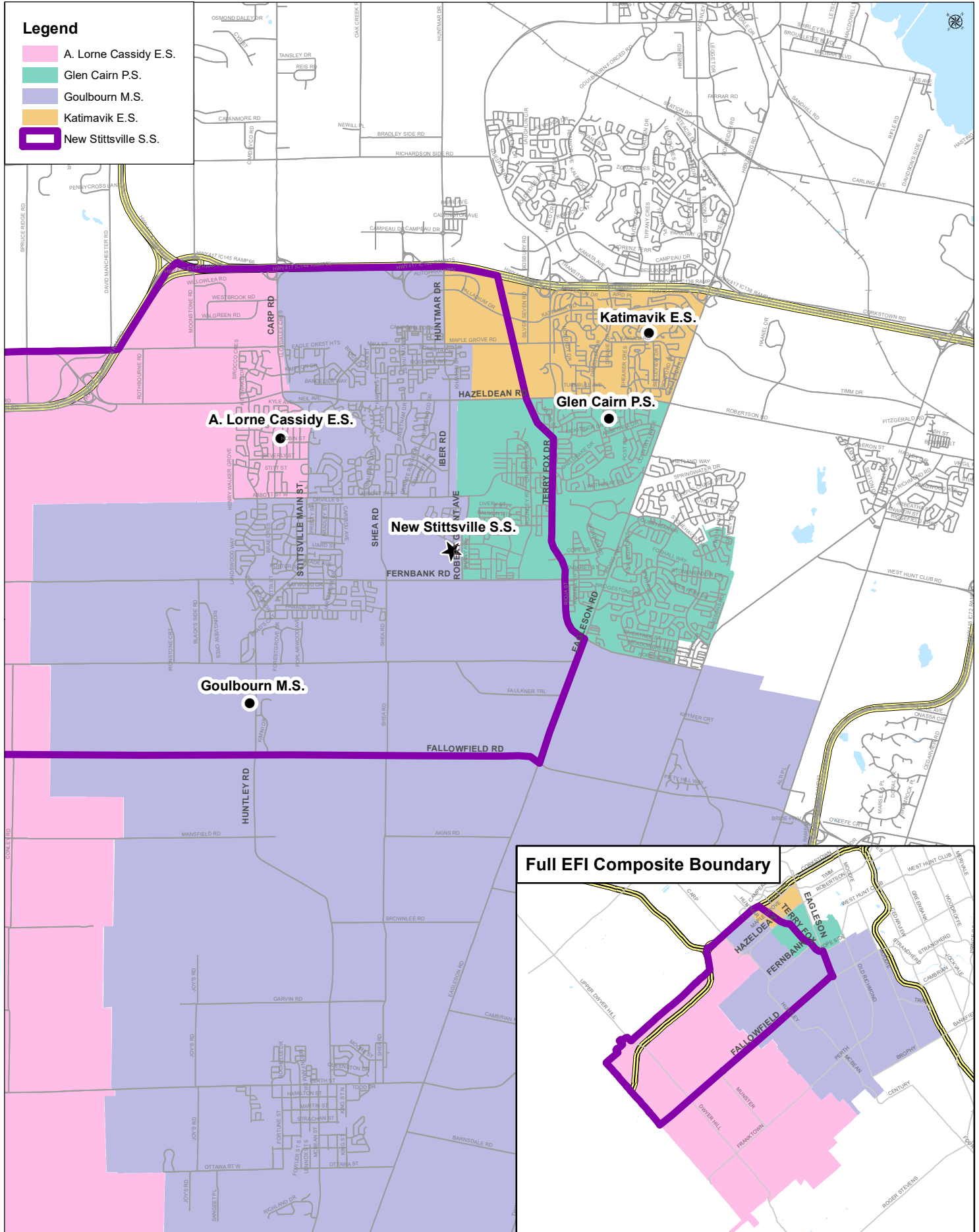




OTTAWA-CARLETON DISTRICT SCHOOL BOARD

# Recommended Attendance Boundaries New Stittsville SS Study 7 to 8 EFI Composite Map

Appendix C (2)  
to Report No. 20-042





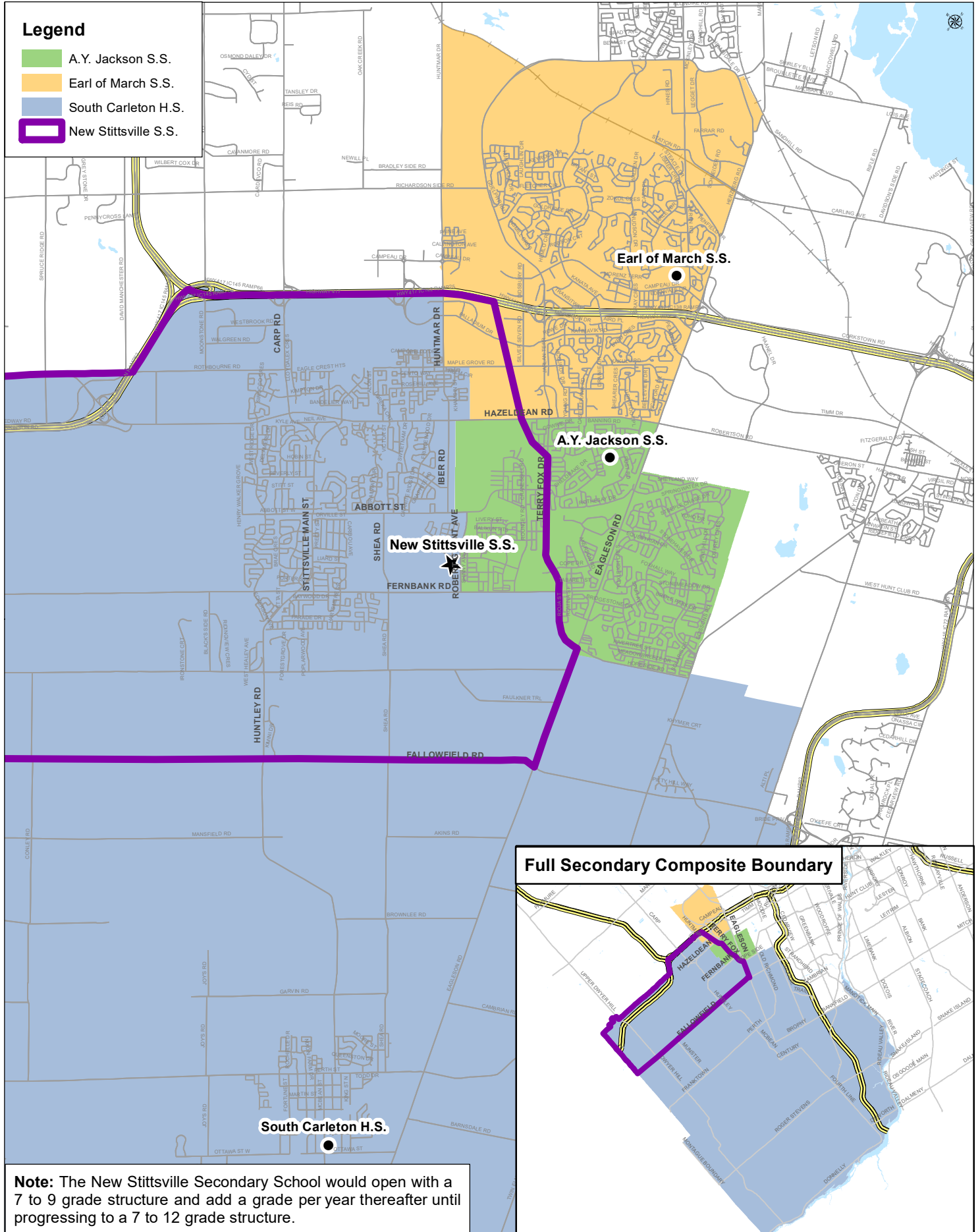




OTTAWA-CARLETON DISTRICT SCHOOL BOARD

# Recommended Attendance Boundaries New Stittsville SS Study Secondary School (Grade 9 to 12) Composite Map

Appendix C (4)  
to Report 20-042





## Stittsville Secondary School Study 2022 Enrolment Projections - Recommended Option

School	Capacity	Program	Yr 1	Yr 2	1	2	3	4	5	6	7	8	9	10	11	12	SE	Total	UF(%)		
A. Lorne Cassidy ES	600	KGTN	45	52															97	75%	
		ENG			7	9	12	5	14	11									58		
		EFI			45	43	47	42	40	36									253		
		MFI						9	15	17									41		
		<b>Total</b>	<b>45</b>	<b>52</b>	<b>52</b>	<b>52</b>	<b>59</b>	<b>56</b>	<b>69</b>	<b>64</b>								<b>449</b>			
Stittsville PS	626	KGTN	72	77															149	99%	
		ENG			18	20	31	27	30	29									155		
		EFI			60	53	63	48	43	51									318		
		MFI																			
		<b>Total</b>	<b>72</b>	<b>77</b>	<b>78</b>	<b>73</b>	<b>94</b>	<b>75</b>	<b>73</b>	<b>80</b>								<b>622</b>			
New Stittsville SS	1353	ENG									97	94							191	53%	
		EFI									146	104							250		
		MFI									25	28							53		
		9-12												229					229		
		<b>Total</b>										<b>268</b>	<b>226</b>	<b>229</b>	<b>0</b>	<b>0</b>	<b>0</b>		<b>723</b>		
<b>TOTAL</b>	3221		117	129	130	125	153	131	142	144	268	226	229	0	0	0	0	1794	56%		
Goulbourn MS	400	KGTN																	0	50%	
		ENG								21	19	25							16		81
		EFI									13	11							24		
		MFI								26	19	23							68		
		G.ENG									13	12							25		
		<b>Total</b>							<b>47</b>	<b>64</b>	<b>71</b>						<b>16</b>	<b>198</b>			
South Carleton HS	1344	<b>Total</b>										<b>190</b>	<b>356</b>	<b>343</b>	<b>302</b>	<b>5</b>	<b>1196</b>	89%			
<b>TOTAL</b>	1744		0	0	0	0	0	0	0	47	64	71	190	356	343	302	21	1394	80%		
Glen Cairn PS	352	KGTN																	0	93%	
		ENG										85	81						8		174
		EFI										66	57						123		
		MFI										13	16						29		
		<b>Total</b>										<b>164</b>	<b>154</b>					<b>8</b>	<b>326</b>		
A.Y. Jackson SS	759	<b>Total</b>										<b>238</b>	<b>262</b>	<b>265</b>	<b>276</b>	<b>11</b>	<b>1052</b>	139%			
<b>TOTAL</b>	2117		0	0	0	0	0	0	0	0	164	154	238	262	265	276	19	1378	65%		
Castlefrank ES	416	KGTN	54	55															109	72%	
		ENG			9	18	21												10		58
		EFI			45	45	44												134		
		<b>Total</b>	<b>54</b>	<b>55</b>	<b>54</b>	<b>63</b>	<b>65</b>												<b>10</b>		<b>301</b>
Katimavik ES	387	KGTN																	0	91%	
		ENG						30	30	21	24	22							28		155
		EFI						47	44	31	38	38							198		
		<b>Total</b>						<b>77</b>	<b>74</b>	<b>52</b>	<b>62</b>	<b>60</b>							<b>28</b>		<b>353</b>
Earl of March SS	1484	ENG									145	156						5	306	148%	
		EFI									93	89							182		
		MFI									86	80							166		
		9-12												358	405	398	367	17	1545		
		<b>Total</b>										<b>324</b>	<b>325</b>	<b>358</b>	<b>405</b>	<b>398</b>	<b>367</b>	<b>22</b>	<b>2199</b>		
<b>TOTAL</b>	2287		54	55	54	63	65	77	74	52	386	385	358	405	398	367	60	2853	125%		

**Note:** SE = Congregated Special Education  
UF% = Utilization (Head Count Total/Capacity)

## Stittsville Secondary School Study 2023 Enrolment Projections - Recommended Option

School	Capacity	Program	Yr 1	Yr 2	1	2	3	4	5	6	7	8	9	10	11	12	SE	Total	UF(%)	
A. Lorne Cassidy ES	600	KGTN	44	53														97	75%	
		ENG			7	9	11	8	6	14										55
		EFI			46	45	44	42	40	39										256
		MFI						13	10	17										40
		<b>Total</b>	<b>44</b>	<b>53</b>	<b>53</b>	<b>54</b>	<b>55</b>	<b>63</b>	<b>56</b>	<b>70</b>										<b>448</b>
Stittsville PS	626	KGTN	73	74														147	99%	
		ENG			18	21	25	33	30	30										157
		EFI			64	54	49	60	47	43										317
		<b>Total</b>	<b>73</b>	<b>74</b>	<b>82</b>	<b>75</b>	<b>74</b>	<b>93</b>	<b>77</b>	<b>73</b>										<b>621</b>
New Stittsville SS	1353	ENG									99	97						196	77%	
		EFI									160	147						307		
		MFI										19	28					47		
		9-12												248	244			492		
		<b>Total</b>										<b>278</b>	<b>272</b>	<b>248</b>	<b>244</b>	<b>0</b>	<b>0</b>			<b>1042</b>
<b>TOTAL</b>	<b>3221</b>		<b>117</b>	<b>127</b>	<b>135</b>	<b>129</b>	<b>129</b>	<b>156</b>	<b>133</b>	<b>143</b>	<b>278</b>	<b>272</b>	<b>248</b>	<b>244</b>	<b>0</b>	<b>0</b>	<b>0</b>	<b>2111</b>	<b>66%</b>	
Goulbourn MS	400	KGTN																0	48%	
		ENG								18	24	19						16		77
		EFI										13	13							26
		MFI									22	26	17							65
		G.ENG											12	13						25
		<b>Total</b>									<b>40</b>	<b>75</b>	<b>62</b>							<b>16</b>
<b>South Carleton HS</b>	<b>1344</b>	<b>Total</b>											<b>193</b>	<b>199</b>	<b>356</b>	<b>357</b>	<b>5</b>	<b>1110</b>	<b>83%</b>	
<b>TOTAL</b>	<b>1744</b>		<b>0</b>	<b>0</b>	<b>0</b>	<b>0</b>	<b>0</b>	<b>0</b>	<b>40</b>	<b>75</b>	<b>62</b>	<b>193</b>	<b>199</b>	<b>356</b>	<b>357</b>	<b>21</b>	<b>1303</b>	<b>75%</b>		
Glen Cairn PS	352	KGTN																0	107%	
		ENG									123	92						8		223
		EFI									61	62								123
		MFI									18	14								32
		<b>Total</b>									<b>202</b>	<b>168</b>						<b>8</b>		<b>378</b>
<b>A.Y. Jackson SS</b>	<b>759</b>	<b>Total</b>										<b>227</b>	<b>261</b>	<b>285</b>	<b>286</b>	<b>11</b>	<b>1070</b>	<b>141%</b>		
<b>TOTAL</b>	<b>2117</b>									<b>202</b>	<b>168</b>	<b>227</b>	<b>261</b>	<b>285</b>	<b>286</b>	<b>19</b>	<b>1448</b>	<b>68%</b>		
Castlefrank ES	416	KGTN	53	57														110	71%	
		ENG			9	17	20											10		56
		EFI			46	41	41													128
		<b>Total</b>	<b>53</b>	<b>57</b>	<b>55</b>	<b>58</b>	<b>61</b>											<b>10</b>		<b>294</b>
Katimavik ES	387	KGTN																0	93%	
		ENG					24	33	32	20	25							28		162
		EFI					41	48	43	29	38									199
		<b>Total</b>					<b>65</b>	<b>81</b>	<b>75</b>	<b>49</b>	<b>63</b>							<b>28</b>		<b>361</b>
Earl of March SS	1484	ENG									122	166						5	293	152%
		EFI									72	90							162	
		MFI									89	85							174	
		9-12												386	376	430	422	17	1631	
		<b>Total</b>										<b>283</b>	<b>341</b>	<b>386</b>	<b>376</b>	<b>430</b>	<b>422</b>	<b>22</b>	<b>2260</b>	
<b>TOTAL</b>	<b>2287</b>		<b>53</b>	<b>57</b>	<b>55</b>	<b>58</b>	<b>61</b>	<b>65</b>	<b>81</b>	<b>75</b>	<b>332</b>	<b>404</b>	<b>386</b>	<b>376</b>	<b>430</b>	<b>422</b>	<b>60</b>	<b>2915</b>	<b>127%</b>	

**Note:** SE = Congregated Special Education  
UF% = Utilization (Head Count Total/Capacity)

## Stittsville Secondary School Study 2024 Enrolment Projections - Working Option A

School	Capacity	Program	Yr 1	Yr 2	1	2	3	4	5	6	7	8	9	10	11	12	SE	Total	UF(%)	
A. Lorne Cassidy ES	600	KGTN	45	52														97	74%	
		ENG			7	9	12	7	10	6								51		
		EFI			47	46	47	40	40	40								260		
		MFI							12	14	12							38		
		<b>Total</b>	<b>45</b>	<b>52</b>	<b>54</b>	<b>55</b>	<b>59</b>	<b>59</b>	<b>64</b>	<b>58</b>										<b>446</b>
Stittsville PS	626	KGTN	72	75														147	100%	
		ENG			18	22	25	25	37	30								157		
		EFI			61	57	50	47	59	47								321		
		<b>Total</b>	<b>72</b>	<b>75</b>	<b>79</b>	<b>79</b>	<b>75</b>	<b>72</b>	<b>96</b>	<b>77</b>										<b>625</b>
New Stittsville SS	1353	ENG									99	101						200	99%	
		EFI									152	161						313		
		MFI									19	20						39		
		9-12											270	263	252			785		
		<b>Total</b>										<b>270</b>	<b>282</b>	<b>270</b>	<b>263</b>	<b>252</b>	<b>0</b>			<b>1337</b>
<b>TOTAL</b>	<b>3221</b>		<b>117</b>	<b>127</b>	<b>133</b>	<b>134</b>	<b>134</b>	<b>131</b>	<b>160</b>	<b>135</b>	<b>270</b>	<b>282</b>	<b>270</b>	<b>263</b>	<b>252</b>	<b>0</b>	<b>0</b>	<b>2408</b>	<b>75%</b>	
Goulbourn MS	400	KGTN																0	50%	
		ENG								20	21	24						16		81
		EFI									11	13						24		
		MFI								25	22	24						71		
		G.ENG									13	12						25		
<b>Total</b>									<b>45</b>	<b>67</b>	<b>73</b>					<b>16</b>	<b>201</b>			
<b>South Carleton HS</b>	<b>1344</b>	<b>Total</b>										<b>211</b>	<b>202</b>	<b>199</b>	<b>370</b>	<b>5</b>	<b>987</b>	<b>73%</b>		
<b>TOTAL</b>	<b>1744</b>		<b>0</b>	<b>0</b>	<b>0</b>	<b>0</b>	<b>0</b>	<b>0</b>	<b>45</b>	<b>67</b>	<b>73</b>	<b>211</b>	<b>202</b>	<b>199</b>	<b>370</b>	<b>21</b>	<b>1188</b>	<b>68%</b>		
Glen Cairn PS	352	KGTN																0	123%	
		ENG									137	133						8		278
		EFI									60	55						115		
		MFI									21	19						40		
		<b>Total</b>									<b>218</b>	<b>207</b>					<b>8</b>	<b>433</b>		
<b>A.Y. Jackson SS</b>	<b>759</b>	<b>Total</b>										<b>235</b>	<b>250</b>	<b>280</b>	<b>308</b>	<b>11</b>	<b>1084</b>	<b>143%</b>		
<b>TOTAL</b>	<b>2117</b>									<b>218</b>	<b>207</b>	<b>235</b>	<b>250</b>	<b>280</b>	<b>308</b>	<b>19</b>	<b>1517</b>	<b>72%</b>		
Castlefrank ES	416	KGTN	53	56														109	70%	
		ENG			10	17	18											10		55
		EFI			48	42	38											128		
		<b>Total</b>	<b>53</b>	<b>56</b>	<b>58</b>	<b>59</b>	<b>56</b>											<b>10</b>		<b>292</b>
Katimavik ES	387	KGTN																0	93%	
		ENG						23	27	35	31	21						28		165
		EFI						39	41	47	40	29						196		
		<b>Total</b>						<b>62</b>	<b>68</b>	<b>82</b>	<b>71</b>	<b>50</b>						<b>28</b>		<b>361</b>
Earl of March SS	1484	ENG									124	140						5	269	153%
		EFI									95	70						165		
		MFI									72	88						160		
		9-12											404	405	398	455	17	1679		
		<b>Total</b>									<b>291</b>	<b>298</b>	<b>404</b>	<b>405</b>	<b>398</b>	<b>455</b>	<b>22</b>	<b>2273</b>		
<b>TOTAL</b>	<b>2287</b>		<b>53</b>	<b>56</b>	<b>58</b>	<b>59</b>	<b>56</b>	<b>62</b>	<b>68</b>	<b>82</b>	<b>362</b>	<b>348</b>	<b>404</b>	<b>405</b>	<b>398</b>	<b>455</b>	<b>60</b>	<b>2926</b>	<b>128%</b>	

**Note:** SE = Congregated Special Education  
UF% = Utilization (Head Count Total/Capacity)

## Stittsville Secondary School Study 2025 Enrolment Projections - Recommended Option

School	Capacity	Program	Yr 1	Yr 2	1	2	3	4	5	6	7	8	9	10	11	12	SE	Total	UF(%)	
A. Lorne Cassidy ES	600	KGTN	44	53														97	76%	
		ENG			7	10	12	8	9	10								56		
		EFI			46	47	48	42	38	39								260		
		MFI							12	13	16							41		
		<b>Total</b>	<b>44</b>	<b>53</b>	<b>53</b>	<b>57</b>	<b>60</b>	<b>62</b>	<b>60</b>	<b>65</b>										<b>454</b>
Stittsville PS	626	KGTN	75	74														149	101%	
		ENG			18	21	27	26	29	37								158		
		EFI			62	55	53	48	46	59								323		
		<b>Total</b>	<b>75</b>	<b>74</b>	<b>80</b>	<b>76</b>	<b>80</b>	<b>74</b>	<b>75</b>	<b>96</b>										<b>630</b>
New Stittsville SS	1353	KGTN										92	101					193	122%	
		EFI										169	152					321		
		MFI										14	20					34		
		9-12												285	287	271	265	1108		
		<b>Total</b>											<b>275</b>	<b>273</b>	<b>285</b>	<b>287</b>	<b>271</b>	<b>265</b>		<b>1656</b>
<b>TOTAL</b>	<b>3221</b>		<b>119</b>	<b>127</b>	<b>133</b>	<b>133</b>	<b>140</b>	<b>136</b>	<b>135</b>	<b>161</b>	<b>275</b>	<b>273</b>	<b>285</b>	<b>287</b>	<b>271</b>	<b>265</b>	<b>0</b>	<b>2740</b>	<b>85%</b>	
Goulbourn MS	400	KGTN																0	47%	
		ENG								16	22	21						16		75
		EFI									10	11								21
		MFI								20	25	20								65
		G.ENG										12	13							25
<b>Total</b>									<b>36</b>	<b>69</b>	<b>65</b>						<b>16</b>	<b>186</b>		
<b>South Carleton HS</b>	<b>1344</b>	<b>Total</b>											<b>205</b>	<b>221</b>	<b>202</b>	<b>207</b>	<b>5</b>	<b>840</b>	<b>63%</b>	
<b>TOTAL</b>	<b>1744</b>		<b>0</b>	<b>0</b>	<b>0</b>	<b>0</b>	<b>0</b>	<b>0</b>	<b>36</b>	<b>69</b>	<b>65</b>	<b>205</b>	<b>221</b>	<b>202</b>	<b>207</b>	<b>21</b>	<b>1026</b>	<b>59%</b>		
Glen Cairn PS	352	KGTN																0	138%	
		ENG										149	148					8		305
		EFI										78	56							134
		MFI										23	22							45
		<b>Total</b>										<b>250</b>	<b>226</b>					<b>8</b>		<b>484</b>
<b>A.Y. Jackson SS</b>	<b>759</b>	<b>Total</b>										<b>244</b>	<b>259</b>	<b>270</b>	<b>302</b>	<b>11</b>	<b>1086</b>	<b>143%</b>		
<b>TOTAL</b>	<b>2117</b>										<b>250</b>	<b>226</b>	<b>244</b>	<b>259</b>	<b>270</b>	<b>302</b>	<b>19</b>	<b>1570</b>	<b>74%</b>	
Castlefrank ES	416	KGTN	55	57														112	73%	
		ENG			11	18	19											10		58
		EFI			48	45	40													133
		<b>Total</b>	<b>55</b>	<b>57</b>	<b>59</b>	<b>63</b>	<b>59</b>													<b>10</b>
Katimavik ES	387	KGTN																0	96%	
		ENG						21	26	29	34	33						28		171
		EFI						36	40	41	44	41								202
		<b>Total</b>						<b>57</b>	<b>66</b>	<b>70</b>	<b>78</b>	<b>74</b>								<b>28</b>
Earl of March SS	1484	ENG										134	144					5	283	154%
		EFI										90	94						184	
		MFI										83	72						155	
		9-12												354	427	434	426	17	1658	
		<b>Total</b>											<b>307</b>	<b>310</b>	<b>354</b>	<b>427</b>	<b>434</b>	<b>426</b>	<b>22</b>	
<b>TOTAL</b>	<b>2287</b>		<b>55</b>	<b>57</b>	<b>59</b>	<b>63</b>	<b>59</b>	<b>57</b>	<b>66</b>	<b>70</b>	<b>385</b>	<b>384</b>	<b>354</b>	<b>427</b>	<b>434</b>	<b>426</b>	<b>60</b>	<b>2956</b>	<b>129%</b>	

**Note:** SE = Congregated Special Education  
UF% = Utilization (Head Count Total/Capacity)

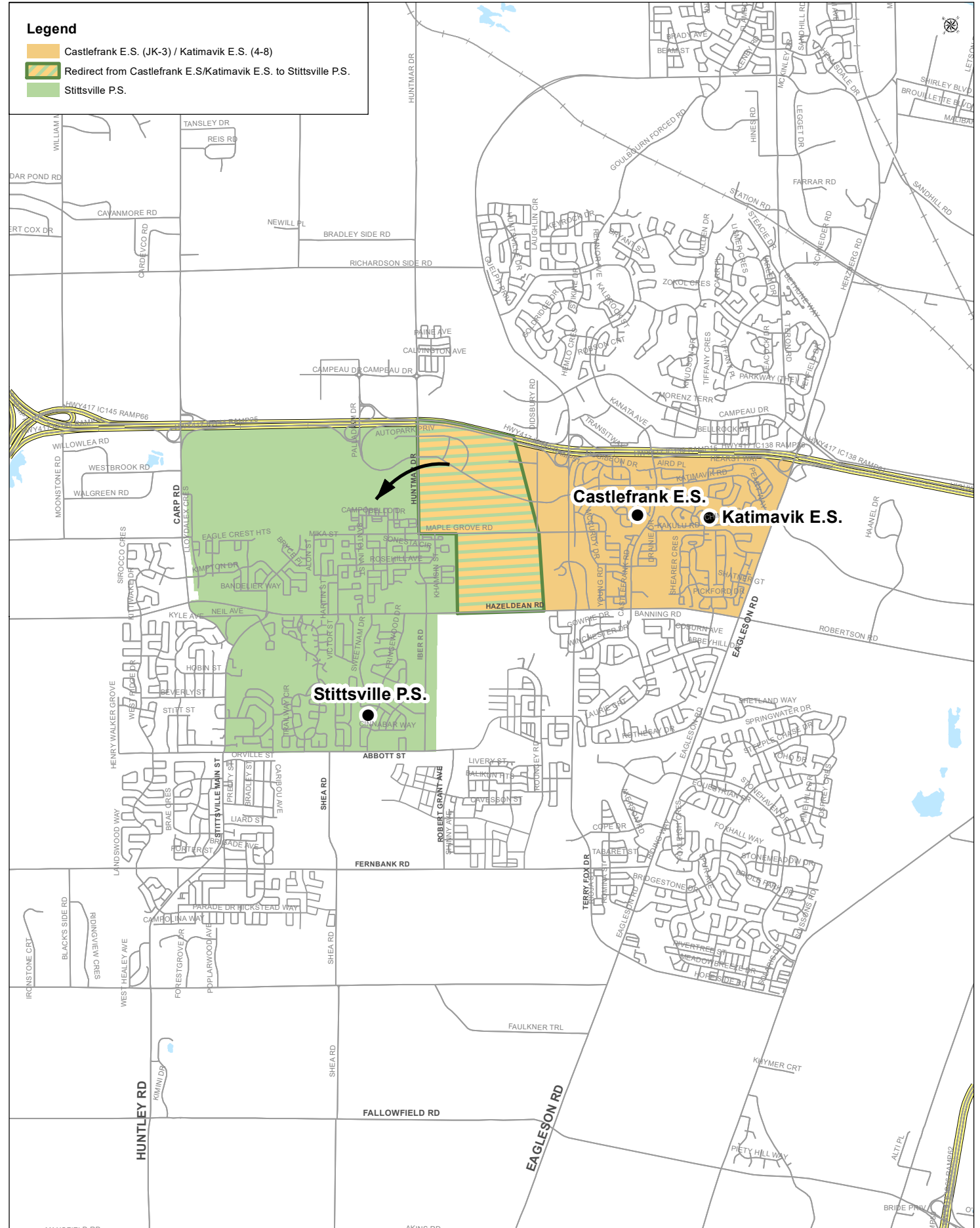
## Stittsville Secondary School Study 2026 Enrolment Projections - Recommended Option

School	Capacity	Program	Yr 1	Yr 2	1	2	3	4	5	6	7	8	9	10	11	12	SE	Total	UF(%)	
A. Lorne Cassidy ES	600	KG TN	45	52														97	76%	
		ENG			7	9	13	8	10	9								56		
		EFI			47	46	49	43	40	38								263		
		MFI						13	14	15								42		
		<b>Total</b>	<b>45</b>	<b>52</b>	<b>54</b>	<b>55</b>	<b>62</b>	<b>64</b>	<b>64</b>	<b>62</b>										<b>458</b>
Stittsville PS	626	KG TN	77	77														154	99%	
		ENG			18	22	26	28	30	29								153		
		EFI			61	56	51	51	47	46								312		
		<b>Total</b>	<b>77</b>	<b>77</b>	<b>79</b>	<b>78</b>	<b>77</b>	<b>79</b>	<b>77</b>	<b>75</b>										<b>619</b>
New Stittsville SS	1353	ENG									122	95						217	131%	
		EFI									189	171						360		
		MFI									18	15						33		
		9-12											286	301	295	284		1166		
		<b>Total</b>									<b>329</b>	<b>281</b>	<b>286</b>	<b>301</b>	<b>295</b>	<b>284</b>		<b>1776</b>		
<b>TOTAL</b>	<b>3221</b>		<b>122</b>	<b>129</b>	<b>133</b>	<b>133</b>	<b>139</b>	<b>143</b>	<b>141</b>	<b>137</b>	<b>329</b>	<b>281</b>	<b>286</b>	<b>301</b>	<b>295</b>	<b>284</b>	<b>0</b>	<b>2853</b>	<b>89%</b>	
Goulbourn MS	400	KG TN																0	48%	
		ENG								21	18	22						16		77
		EFI									11	10								21
		MFI								25	20	23								68
		G.ENG										13	12							25
<b>Total</b>									<b>46</b>	<b>62</b>	<b>67</b>						<b>16</b>	<b>191</b>		
<b>South Carleton HS</b>	<b>1344</b>	<b>Total</b>											<b>198</b>	<b>215</b>	<b>221</b>	<b>211</b>	<b>5</b>	<b>850</b>	<b>63%</b>	
<b>TOTAL</b>	<b>1744</b>		<b>0</b>	<b>0</b>	<b>0</b>	<b>0</b>	<b>0</b>	<b>0</b>	<b>46</b>	<b>62</b>	<b>67</b>	<b>198</b>	<b>215</b>	<b>221</b>	<b>211</b>	<b>21</b>	<b>1041</b>	<b>60%</b>		
Glen Cairn PS	352	KG TN																0	145%	
		ENG									151	161						8		320
		EFI									73	71								144
		MFI									24	24								48
		<b>Total</b>									<b>248</b>	<b>256</b>						<b>8</b>		<b>512</b>
<b>A.Y. Jackson SS</b>	<b>759</b>	<b>Total</b>										<b>258</b>	<b>271</b>	<b>281</b>	<b>292</b>	<b>11</b>	<b>1113</b>	<b>147%</b>		
<b>TOTAL</b>	<b>2117</b>									<b>248</b>	<b>256</b>	<b>258</b>	<b>271</b>	<b>281</b>	<b>292</b>	<b>19</b>	<b>1625</b>	<b>77%</b>		
Castlefrank ES	416	KG TN	57	59														116	75%	
		ENG			11	20	20											10		61
		EFI			49	45	42													136
		<b>Total</b>	<b>57</b>	<b>59</b>	<b>60</b>	<b>65</b>	<b>62</b>											<b>10</b>		<b>313</b>
Katimavik ES	387	KG TN																0	94%	
		ENG						22	24	28	28	36						28		166
		EFI						38	37	40	39	44								198
		<b>Total</b>						<b>60</b>	<b>61</b>	<b>68</b>	<b>67</b>	<b>80</b>						<b>28</b>		<b>364</b>
Earl of March SS	1484	ENG									115	156						5	276	156%
		EFI									97	89							186	
		MFI									73	83							156	
		9-12											383	375	457	464	17	1696		
		<b>Total</b>									<b>285</b>	<b>328</b>	<b>383</b>	<b>375</b>	<b>457</b>	<b>464</b>	<b>22</b>	<b>2314</b>		
<b>TOTAL</b>	<b>2287</b>		<b>57</b>	<b>59</b>	<b>60</b>	<b>65</b>	<b>62</b>	<b>60</b>	<b>61</b>	<b>68</b>	<b>352</b>	<b>408</b>	<b>383</b>	<b>375</b>	<b>457</b>	<b>464</b>	<b>60</b>	<b>2991</b>	<b>131%</b>	

**Note:** SE = Congregated Special Education  
UF% = Utilization (Head Count Total/Capacity)



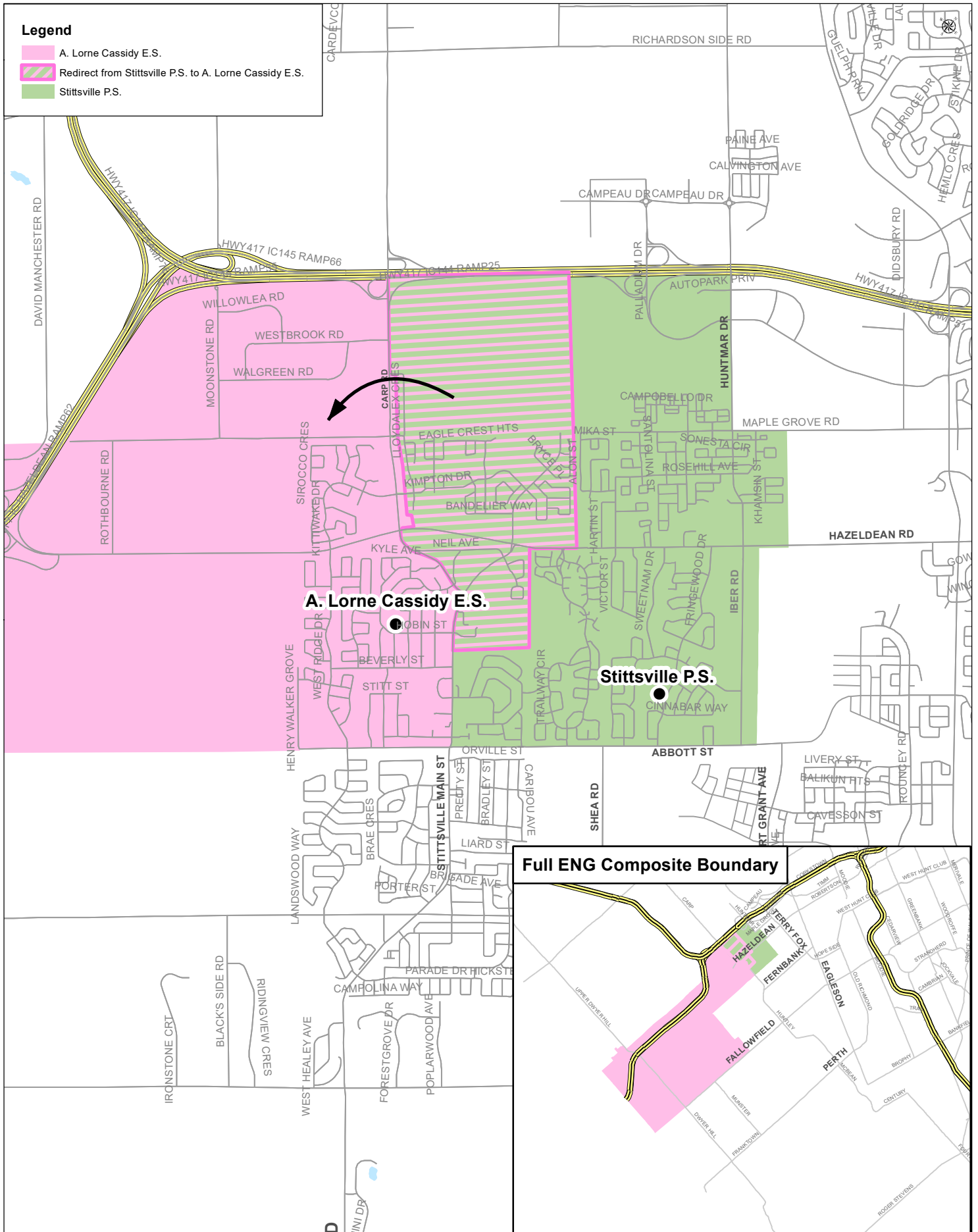
# Recommended K to 6 ENG and EFI Attendance Boundary Revision Between Castlefrank ES /Katimavik ES and Stittsville PS





OTTAWA-CARLETON DISTRICT SCHOOL BOARD

# Recommended K to 6 ENG Attendance Boundary Revision Between A. Lorne Cassidy ES and Stittsville PS

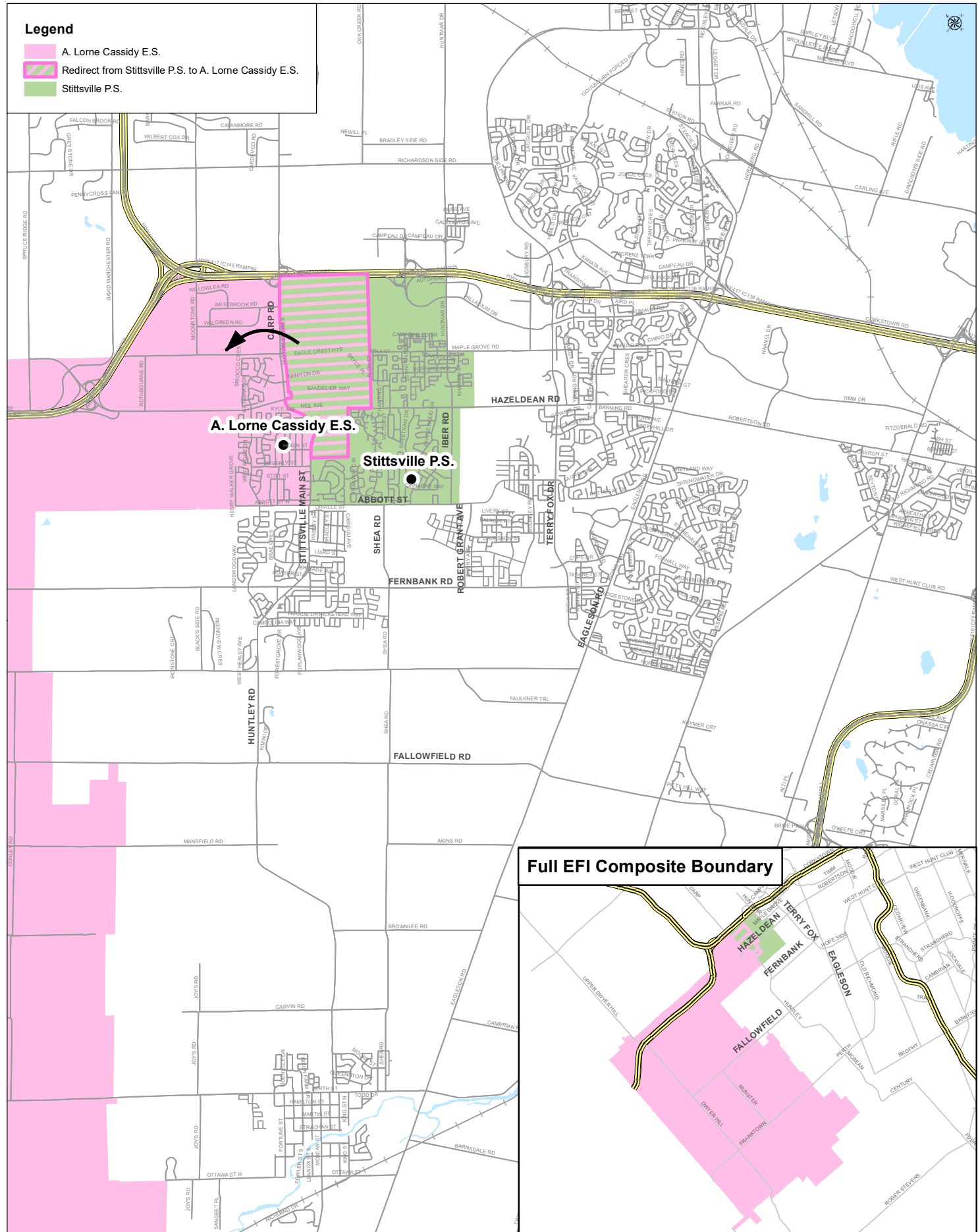






OTTAWA-CARLETON  
DISTRICT SCHOOL BOARD

# Recommended K to 6 EFI Attendance Boundary Redirection Between A. Lorne Cassidy ES and Stittsville PS



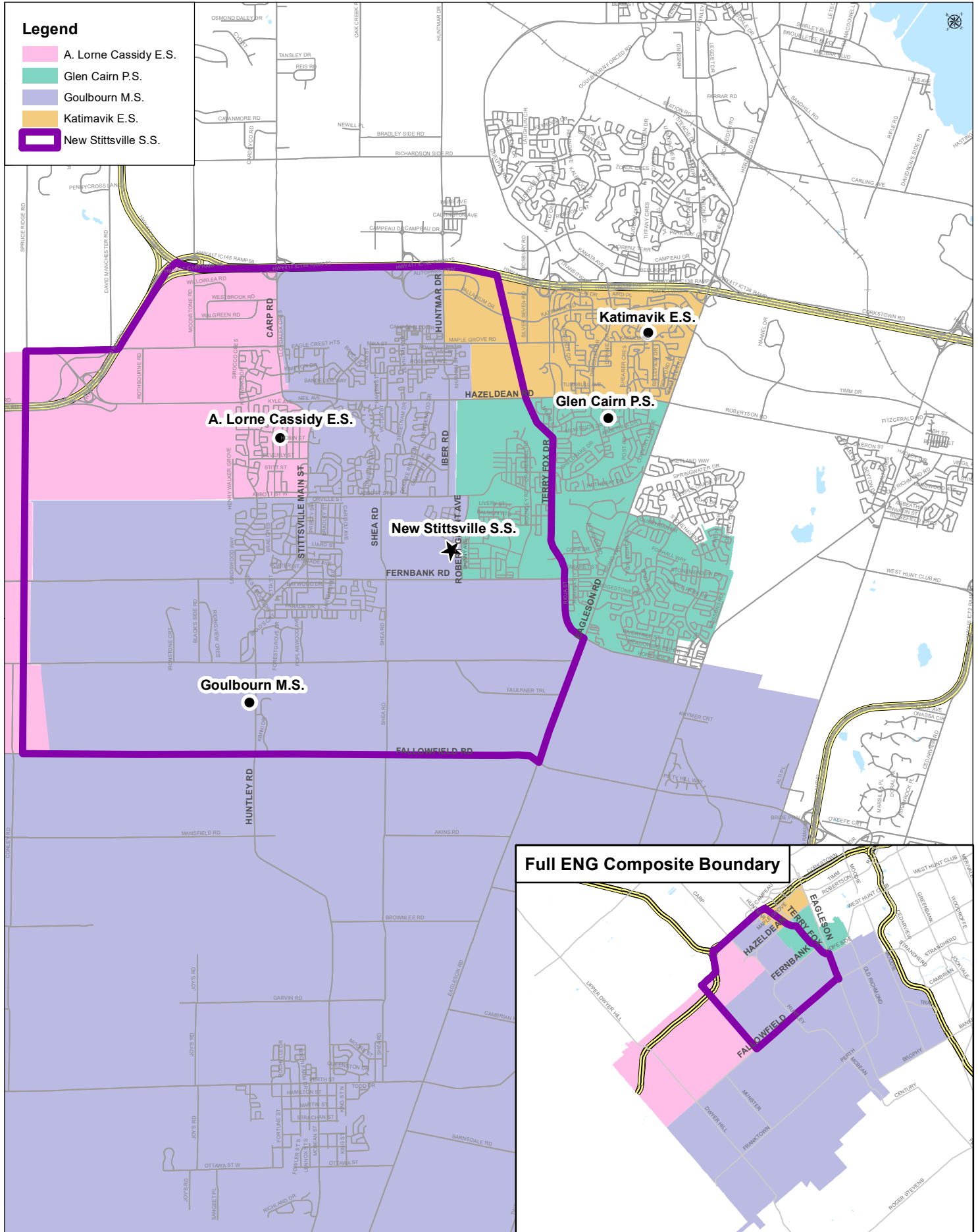




OTTAWA-CARLETON DISTRICT SCHOOL BOARD

# Alternate Option B Attendance Boundaries New Stittsville SS Study 7 to 8 ENG Composite Map

Appendix G (1)  
to Report 20-042

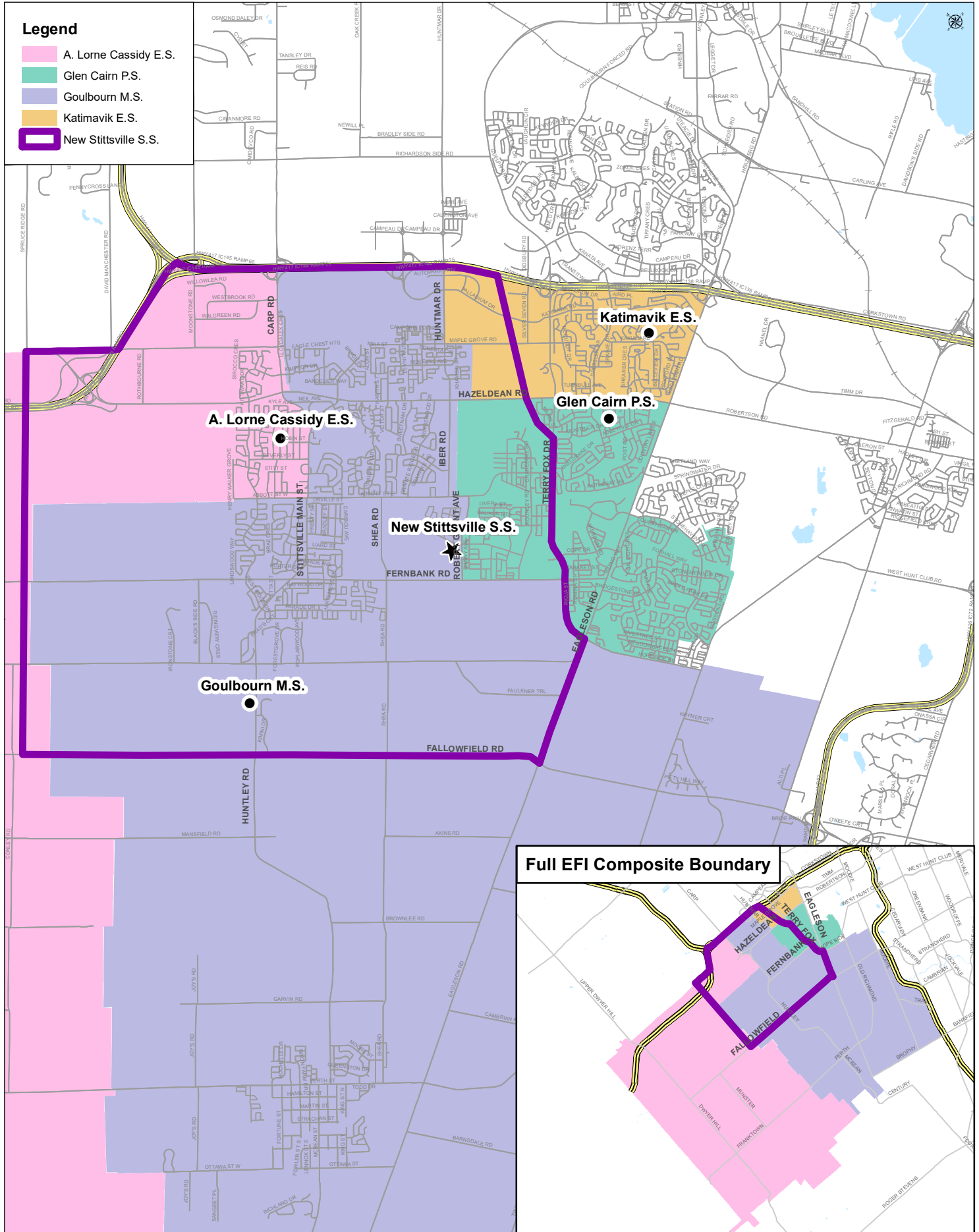




OTTAWA-CARLETON  
DISTRICT SCHOOL BOARD

# Alternate Option B Attendance Boundaries New Stittsville SS Study 7 to 8 EFI Composite Map

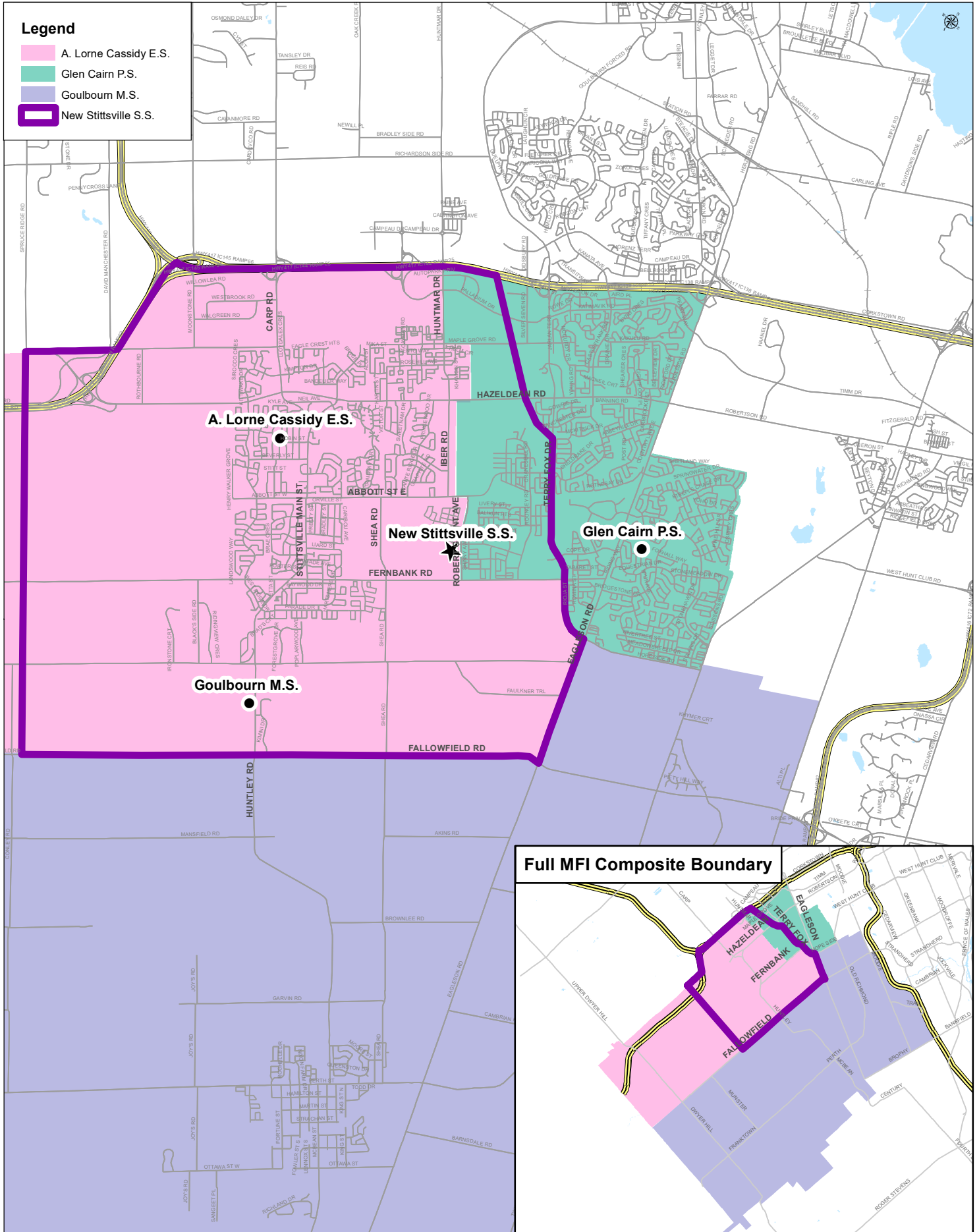
Appendix G (2)  
to Report 20-042





OTTAWA-CARLETON  
DISTRICT SCHOOL BOARD

# Alternate Option B Attendance Boundaries New Stittsville SS Study 7 to 8 MFI Composite Map



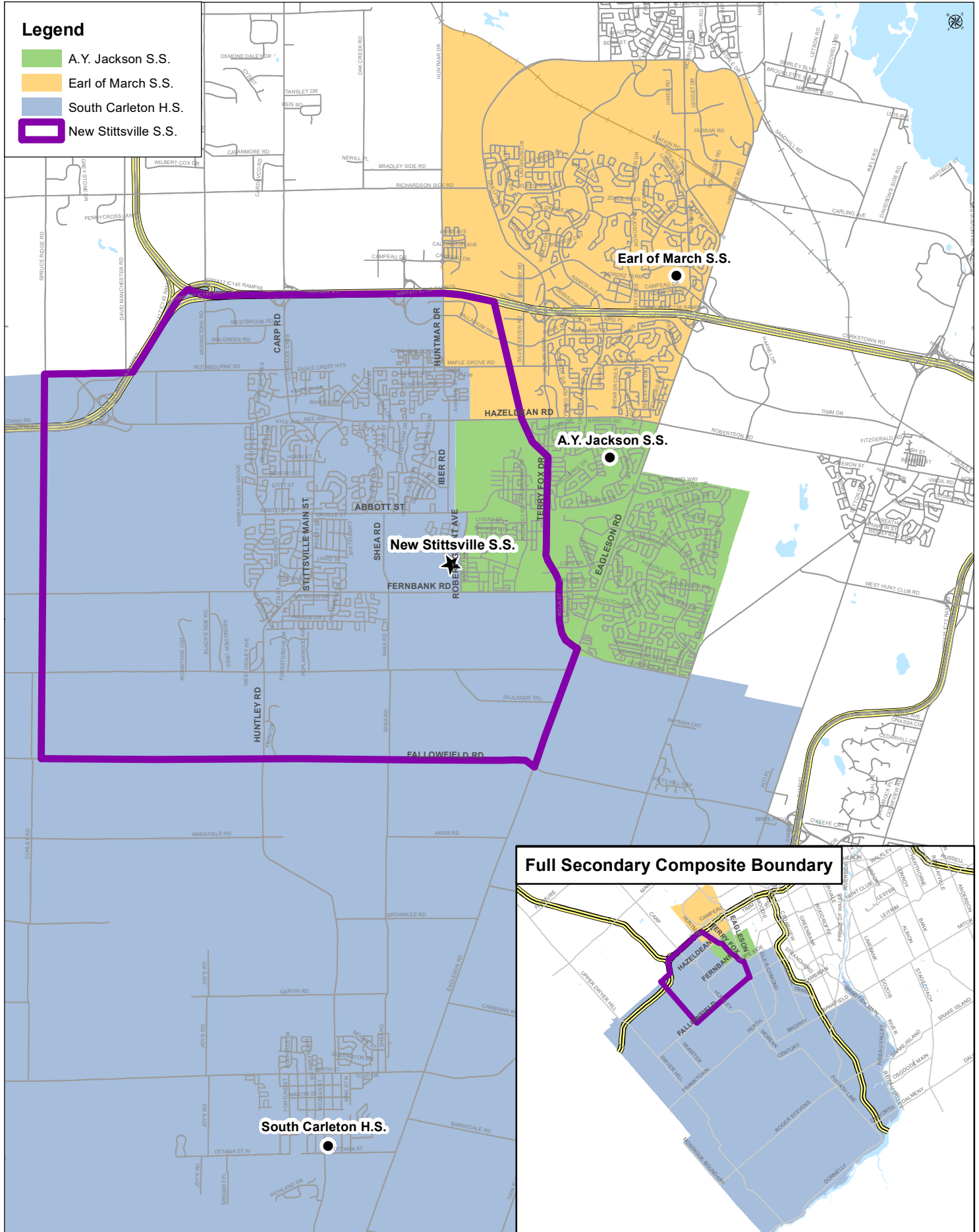




OTTAWA-CARLETON DISTRICT SCHOOL BOARD

# Alternate Option B Attendance Boundaries New Stittsville SS Study Secondary School (Grades 9 to 12) Composite Map

Appendix G (4)  
to Report 20-042

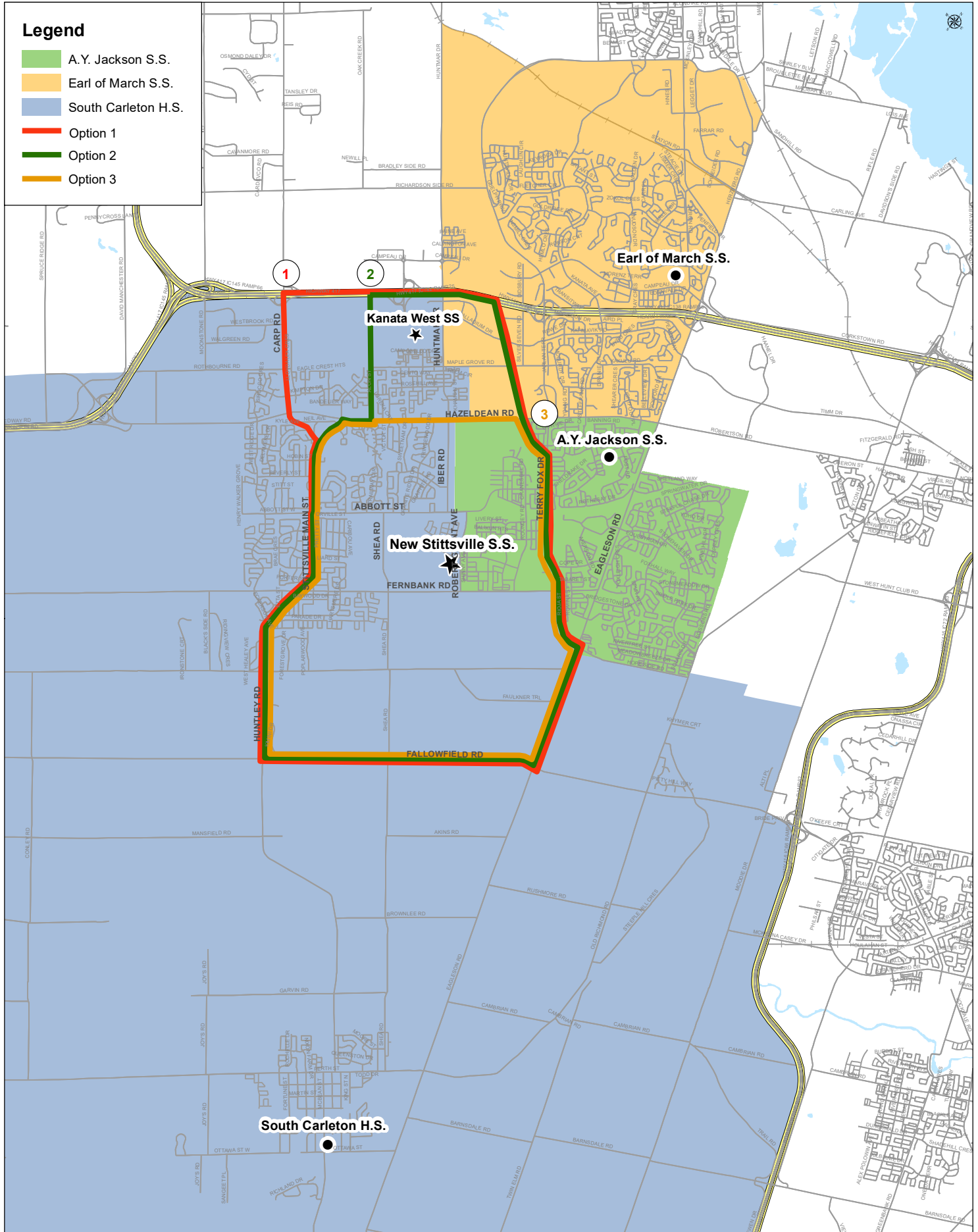




OTTAWA-CARLETON DISTRICT SCHOOL BOARD

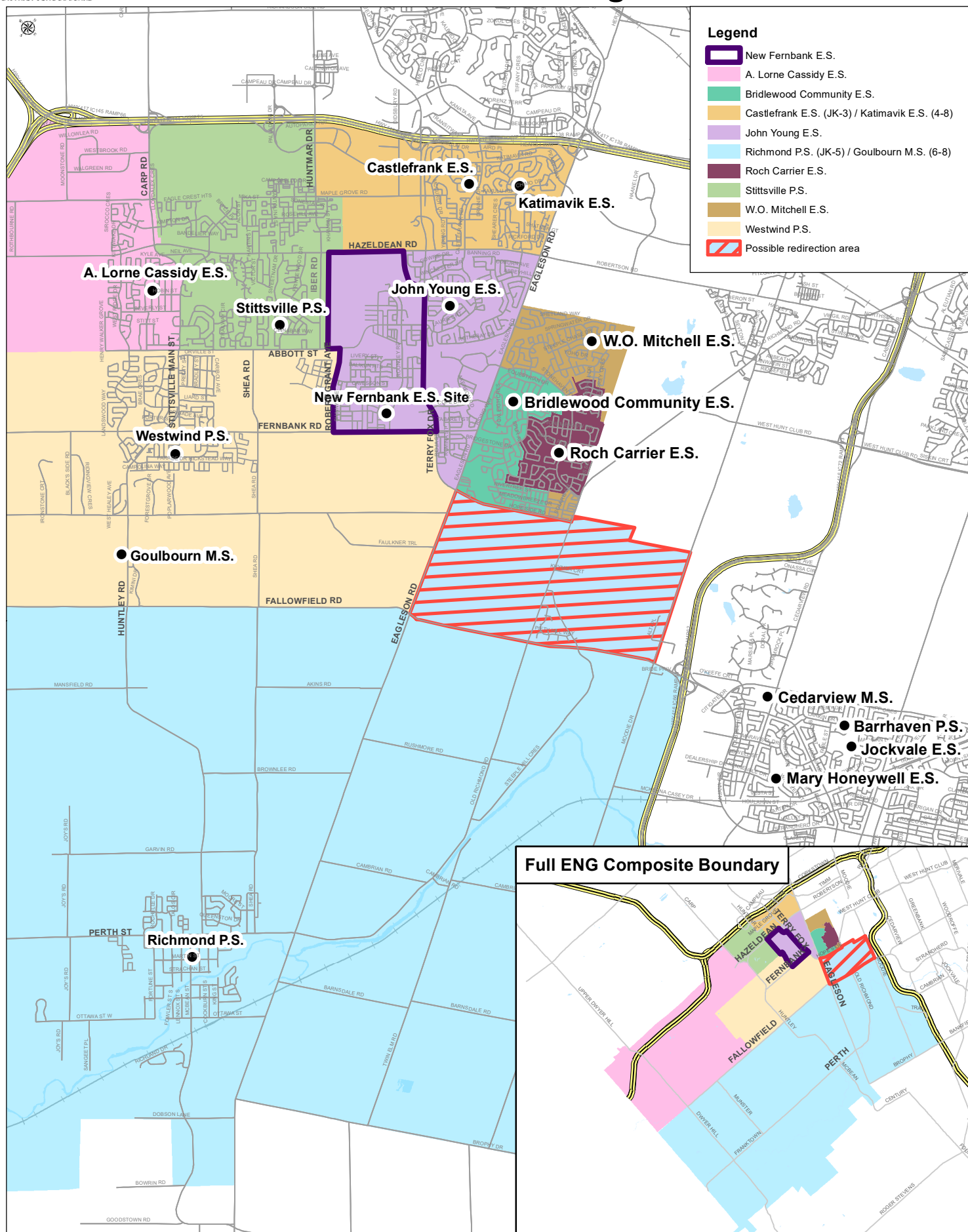
# Alternate Option C East - West Attendance Boundary New Stittsville SS Study Secondary School (Grades 9 to 12) Composite Map

Appendix H  
to Report 20-042



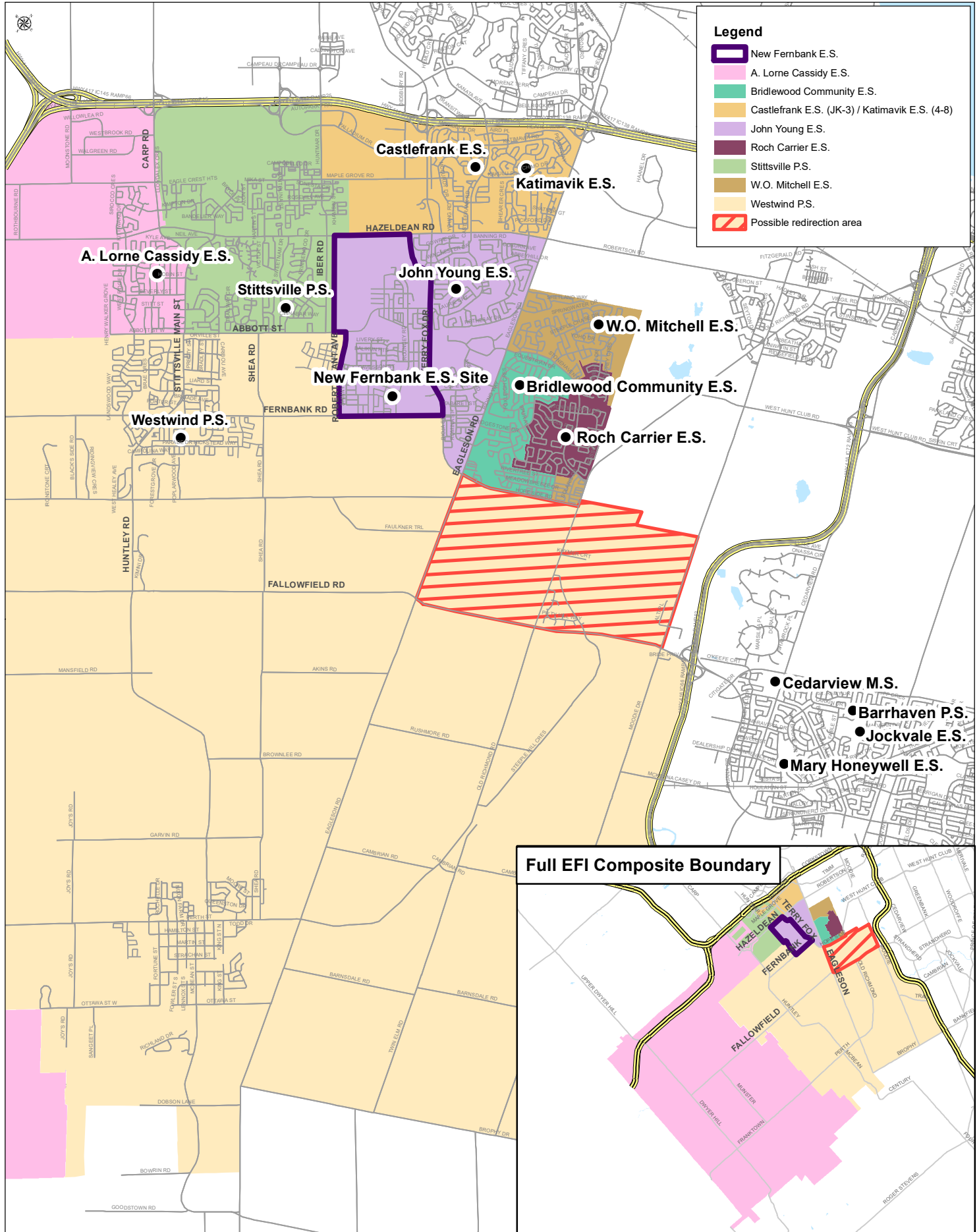


# Current K to 6 ENG Composite Map Considered Fallowfield Village Redirection





# Current K to 6 EFI Composite Map Considered Fallowfield Village Redirection



# Current 4 to 6 MFI Composite Map Considered Fallowfield Village Redirection

