

# STITTSVILLE SECONDARY SCHOOL STUDY

Opening Grade Structure, Program,  
Attendance Boundary, and  
Other Related Changes



## Working Group Meeting #2

### Information Package

27 January 2020  
6:30 to 8:30 pm

Library  
A. Lorne Cassidy ES  
27 Hobin Street, Stittsville



---

---

## Table of Contents

	Page
1. Study Objectives and Considerations.....	1-2
2. <b>Working Option A</b> – Summary.....	3
3. <b>Working Option A</b> – 7-8 ENG/EFI/MFI, 9-12 ENG/IMM <i>Includes all Planning Areas</i>	
• Attendance Boundary Maps.....	4-7
• Working Option A and Individual School Summaries.....	8-11
• Projected Enrolment Impact by School – 2022 to 2026.....	12-16
4. <b>Working Option B</b> – Summary.....	17
5. <b>Working Option B</b> - 7-8 ENG/EFI/MFI, 9-12 ENG/IMM <i>Includes all Planning Areas except only a portion of Area 12</i>	
• Attendance Boundary Maps.....	18-21
• Working Option B and Individual School Summaries.....	22-24
• Projected Enrolment Impact by School – 2022 to 2026.....	25-29
6. New Stittsville Secondary School – Potential Design.....	30
• Schematic Design Submission – August 2019.....	31
• Site Plan – New Stittsville Secondary School.....	32-33
• Elevations and Perspective – New Stittsville Secondary School.....	34-38
• Floor Plan – New Stittsville Secondary School.....	39-42
7. Revised Study Timeline.....	43

## **Study Objectives**

1. Determine an attendance boundary, program offering, and opening grade structure for the new Stittsville secondary school.
2. The creation of a set of attendance boundaries and programs for local schools which:
  - i) help to balance enrolments at local area schools;
  - ii) are logical and sustainable in the longer-term;
  - iii) align program feeding patterns;
  - iv) provide for viable student programming; and
  - v) account for future planning considerations such as the opening of additional schools in future years.
3. The examination of designated school directions for new and future residential development areas. Are there any boundary adjustments that should be considered to create more geographically logical attendance boundaries and/or better balance future enrolments between area schools?

## **Considerations**

### Capital Funding Strategy and Attendance Boundary Size

- *Should we set a smaller and more sustainable long-term attendance boundary for the new school which would result in only parts of the Stittsville area being directed to the new school; or*
- *Should we set a larger attendance boundary which would result in accommodation pressures earlier – these site pressures, however, would support a business case submission to the Ministry of Education in order to help secure capital funding to build a future addition at the New Stittsville SS, or the construction of a second area high school (Kanata West SS).*

### A Family of Schools

- *Attendance boundary changes proposed in Option A and B would move towards creating a family of schools for the Stittsville area.*
- *At this time however, we are not able to fully align all area school attendance boundaries to make a Family of Schools. EFI students residing south of Fallowfield Road are currently directed to Stittsville area schools (A. Lorne Cassidy ES or Westwind PS) while ENG and MFI students are directed to Richmond PS. A future elementary school site has been reserved*

*within the developing residential lands in the Village of Richmond. A new elementary school would provide the OCDSB with the opportunity to add a local EFI program in the Village of Richmond and revise existing EFI attendance boundaries and grade structures, potentially resulting in a more complete Family of Schools set-up for students in this part of the District.*



## Working Option A

**New Stittsville SS is Grade 7 to 8 ENG/EFI/MFI and Grade 9 to 12 ENG/IMM with an attendance boundary that includes all Planning Areas (1-13)\* west of the Carp River/Terry Fox Drive**

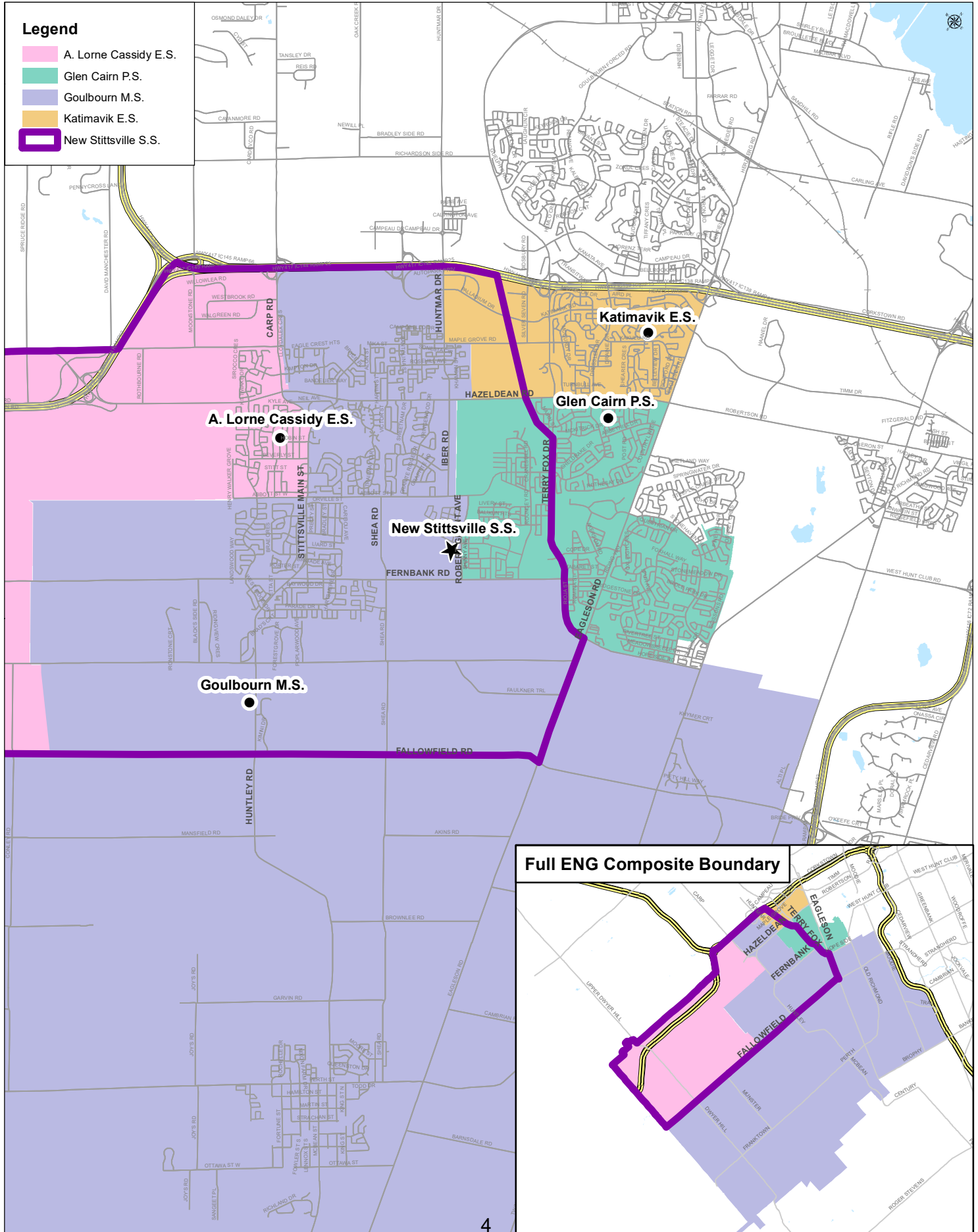
- **A. Lorne Cassidy ES** becomes a K to 6 ENG/EFI/MFI school.
  - Grade 7 and 8 program is relocated to New Stittsville SS.
  - Students residing north of Fallowfield Road would feed to New Stittsville SS for 7 to 12.
  - Students residing south of Fallowfield Road would feed to Goulbourn MS for 7 & 8, and continue to feed to South Carleton HS for 9 to 12.
- **New Fernbank ES and Stittsville PS** remain K to 6 ENG/EFI schools and students would feed to New Stittsville SS for 7 to 12.
- **Westwind PS** remains K to 6 ENG/EFI school.
  - Students residing north of Fallowfield Road would feed to New Stittsville SS for 7 to 12.
  - Students residing south of Fallowfield Road would continue to feed to Goulbourn MS for 7 & 8, and South Carleton HS for 9 to 12.

\* *Planning Areas were included in Working Group Meeting #1 information package, dated November 27<sup>th</sup>, 2019.*



OTTAWA-CARLETON  
DISTRICT SCHOOL BOARD

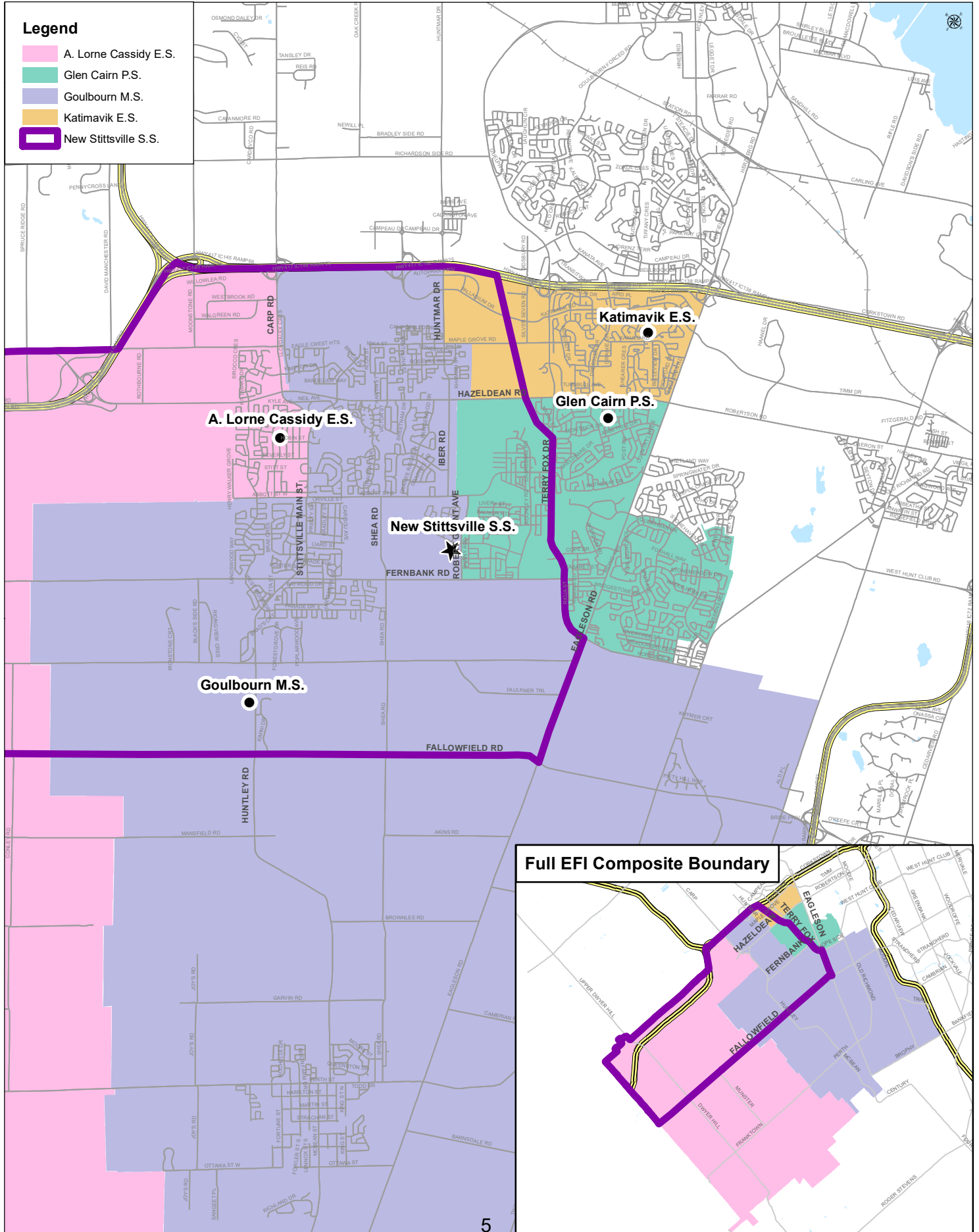
# Working Option A: New Stittsville S.S. Study 7 to 8 ENG Composite Map





OTTAWA-CARLETON  
DISTRICT SCHOOL BOARD

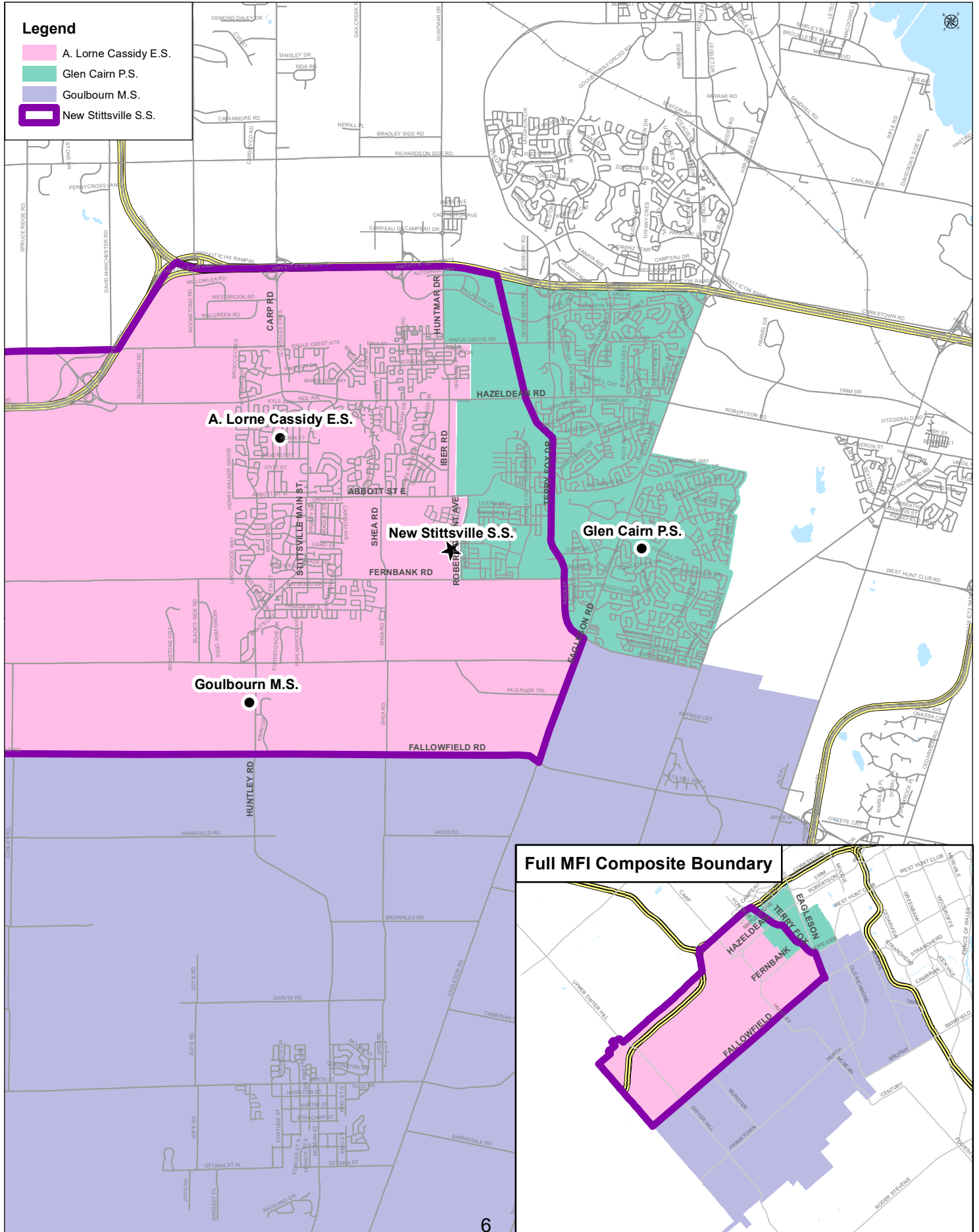
# Working Option A: New Stittsville S.S. Study 7 to 8 EFI Composite Map





OTTAWA-CARLETON  
DISTRICT SCHOOL BOARD

# Working Option A: New Stittsville S.S. Study 7 to 8 MFI Composite Map





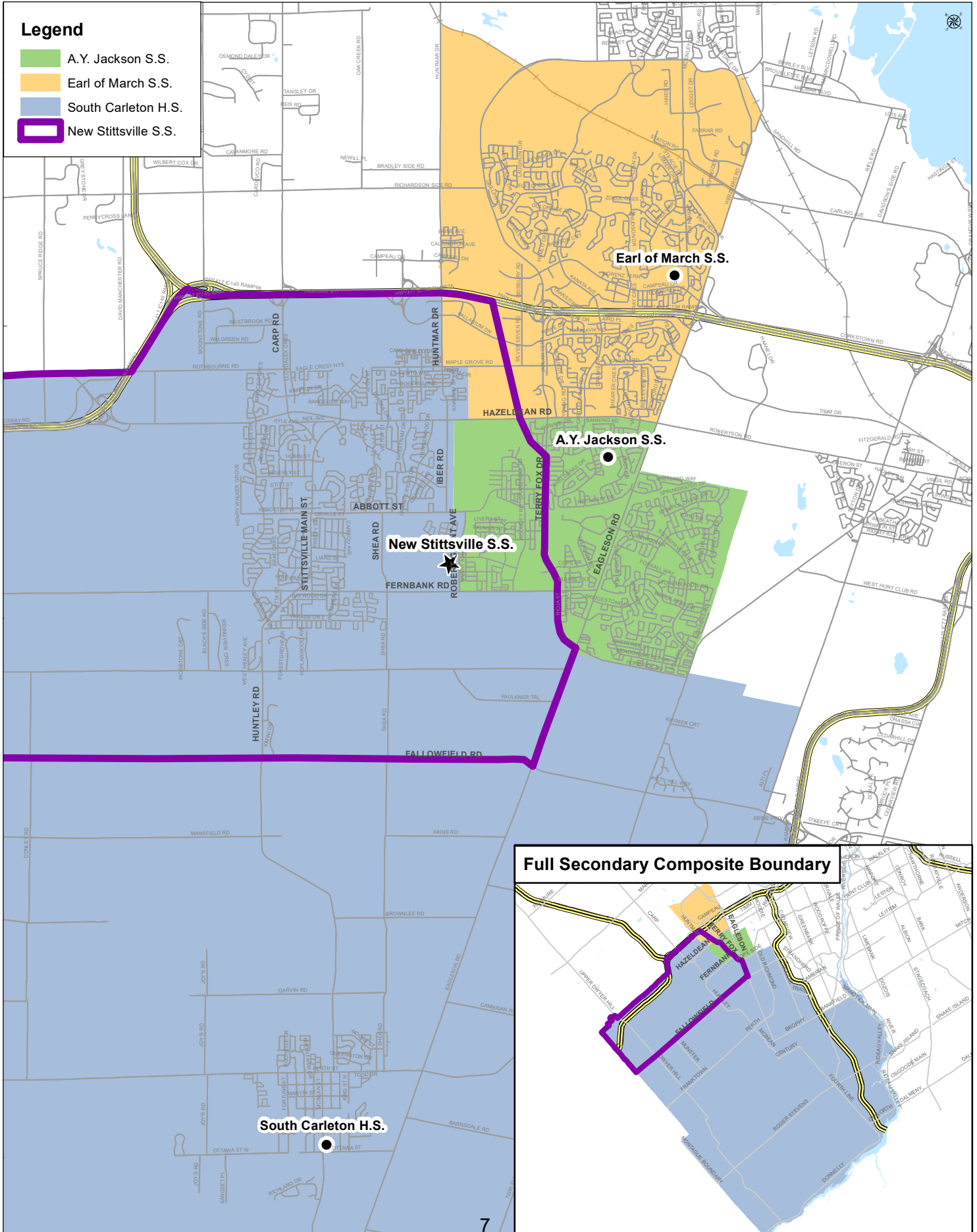


OTTAWA-CARLETON DISTRICT SCHOOL BOARD

# Working Option A: New Stittsville S.S. Study Secondary School Composite Map

## Legend

- A.Y. Jackson S.S.
- Earl of March S.S.
- South Carleton H.S.
- New Stittsville S.S.



## **Working Option A**

***New Stittsville SS is Grade 7 to 8 ENG/EFI/MFI and Grade 9 to 12 ENG/IMM  
with an attendance area that includes all Planning Areas (1-13)  
west of the Carp River/Terry Fox Drive***

The New Stittsville Secondary School attendance boundary would be comprised of the K to 6 English Program with Core French attendance boundaries of A. Lorne Cassidy ES, Stittsville PS, Westwind PS, New Fernbank ES, and the portion of the Castlefrank ES (K-3)/Katimavik ES (4-8) attendance boundary west of the Carp River/Terry Fox Drive.

This boundary takes steps towards creating a family of schools feeding pattern for Stittsville area schools. All Stittsville area elementary schools would have a standardized K to 6 grade structure.

### **Outcomes for Consideration:**

- Results in future Castlefrank ES (K to 3) and Katimavik ES (4 to 6) students residing west of the Carp River/Terry Fox Drive and north of Hazeldean Road being directed to Kanata area schools for K to 6 and then directed to New Stittsville SS for 7 to 12.
- Creates two different feeding patterns for EFI students attending A. Lorne Cassidy ES and Westwind PS. Students residing north of Fallowfield Road would feed to the New Stittsville SS for 7 to 12. Students residing south of Fallowfield Road would feed to Goulbourn MS for 7 & 8 and South Carleton HS for 9 to 12.

### **Individual School Summaries**

**A. Lorne Cassidy ES** becomes a K to 6 ENG/EFI/MFI school serving all of its existing attendance boundary area.

- Grade 7 and 8 program is relocated to New Stittsville SS.
- Students residing north of Fallowfield Road would feed to New Stittsville SS for 7 to 12.
- Students residing south of Fallowfield Road would feed to Goulbourn MS for 7 & 8 ENG/EFI/MFI, and continue to feed to South Carleton HS for 9 to 12.
- MFI students would continue to feed into the school at grade 4 from Stittsville PS, Westwind PS, and New Fernbank ES, upon its future opening (TBD).

**New Fernbank ES** (opening date TBD) remains a K to 6 ENG/EFI school to serve students within its previously approved attendance boundary area.

- Students would feed to New Stittsville SS for 7 to 12.

**Stittsville PS** remains a K to 6 ENG/EFI school serving students within its existing attendance boundary area.

- Students would feed to New Stittsville SS for 7 to 12.

**Westwind PS** remains a K to 6 ENG/EFI school serving students within its existing attendance boundary area.

- Students residing north of Fallowfield Road would feed to New Stittsville SS for 7 to 12.
- Students residing south of Fallowfield Road would continue to feed to Goulbourn MS for 7 & 8, and South Carleton HS for 9 to 12.

**Goulbourn MS** remains a 6 to 8 ENG/MFI, 7 & 8 EFI school, with a reduced attendance boundary, generally serving students residing south of Fallowfield Road. The portion of its boundary north of Fallowfield Road would be redirected to New Stittsville SS for 7 & 8, except for the portion east of Eagleson Road which would remain directed to Goulbourn MS.

- Richmond PS ENG/MFI students would continue to feed into the school at grade 6.
- A. Lorne Cassidy ES ENG/EFI/MFI students residing south of Fallowfield Road would feed into the school at grade 7.
- Westwind PS ENG/EFI students residing south of Fallowfield Road would continue to feed into the school at grade 7.
- Grade 8 students would continue to feed to South Carleton HS for 9 to 12.

**Glen Cairn PS** remains a 7 & 8 ENG/EFI/MFI school with a reduced attendance boundary. The Fernbank portion of its boundary (west of the Carp River/Terry Fox Drive) would be redirected to New Stittsville SS.

- Students residing east of the Carp River/Terry Fox Drive would continue to feed to A.Y. Jackson SS for 9 to 12.

**A.Y. Jackson SS** remains a 9 to 12 ENG/IMM school with a reduced attendance boundary. The Fernbank portion of its boundary (west of the Carp River/Terry Fox Drive) would be redirected to New Stittsville SS for 9 to 12.

**Castlefrank ES** remains a K to 3 ENG/EFI school serving all its existing attendance boundary area.

**Katimavik ES** remains a 4 to 8 ENG/EFI school with a reduced grade 7 & 8 attendance boundary. A future Kanata West residential development area (west of the Carp River/Terry Fox Drive) would be redirected to New Stittsville SS for 7 & 8.

- Students residing west of the Carp River/Terry Fox Drive would feed to the New Stittsville SS at grade 7.
- Students residing east of the Carp River/Terry Fox Drive would continue to feed to Earl of March SS for 9 to 12

**Earl of March SS** remains a 7 to 12 school with a reduced 9 to 12 attendance boundary. A future Kanata West residential development area (west of the Carp River/Terry Fox Drive) would be redirected to New Stittsville SS for 9 to 12.

**Factors to Consider Under This Option:**

An attendance boundary is created for New Stittsville SS which would see portables on site soon after opening. Under this option the school’s projected 2022 enrolment (with a full complement of grades 7 to 12) is 1335 students and its utilization rate is 99%. This would leave the school with no surplus pupil places within the school to serve future student growth from the boundary area.

It is anticipated that portables for instructional use would most likely be needed on site the year after opening.

Please note, typically a new school does not open with a full complement of grades. For example the new school could open as 7 to 11 with 12 phasing in the following year. This would allow grade 12 students from sending schools (AY Jackson SS & South Carleton HS) to graduate with their peers/cohort.

1. Does the proposed New Stittsville SS attendance boundary make geographical sense – reflect neighbourhood/community alignments?
2. Goulbourn MS is currently not located within its own MFI attendance boundary. Under this option the school would also not be located within its own ENG and EFI attendance boundaries. Would Flewellyn Road, rather than Fallowfield Road, be a better southern attendance boundary limit for New Stittsville SS? If yes, what about for local elementary schools (A. Lorne Cassidy ES, Westwind PS, Richmond PS)?
3. Should the new school’s attendance boundary be reduced to better manage accommodation pressures for a longer period of time?



4. What should the opening grade structure be? Typically a new school does not open with a full complement of grades – to allow grade 12 students to graduate with their peers/cohort.
  - 7 to 9?
  - 7 to 10?
  - 7 to 11?
5. Should the area west of the Carp River/Terry Fox Drive within the attendance boundaries for Castlefrank ES (K-3) and Katimavik ES (4-6) be redirected to a Stittsville area elementary school? Note that this area would most likely be redirected to a future Kanata West ES school upon its opening.
6. Should the attendance boundary for A. Lorne Cassidy ES be enlarged in order to take advantage of the surplus instructional space made available within the school via the relocating of grade 7 and 8 students to New Stittsville SS?
7. There are significant future residential developments within the attendance boundaries for New Fernbank ES, Stittsville PS, and Westwind PS.

Should further boundary adjustments be made between area elementary schools to better balance future enrolment growth? As funding is secured for future schools and they are able to be opened, this will help to alleviate longer-term pressures at current schools.

- A. Lorne Cassidy ES projected 2022 enrolment is 449 with a utilization of 75%
- Stittsville PS projected 2022 enrolment is 622 with utilization 99%
- New Fernbank ES opening date TBD
- Westwind PS is currently involved in a consultation process examining interim measures which could be put in place for September 2020 to alleviate growing accommodation pressures at John Young ES, until the opening of a new Fernbank elementary school. The opening of an elementary school in Fernbank is the highest capital priority of the OCDSB. In September 2019, a business case requesting funding to construct the school was submitted to the Ministry of Education. We are hopeful a funding announcement will be received early this year.

## Stittsville Secondary School Study 2022 Enrolment Projections - Working Option A

School	Capacity	Program	Yr 1	Yr 2	1	2	3	4	5	6	7	8	9	10	11	12	SE	Total	UF(%)		
A. Lorne Cassidy ES	600	KGTN	45	52															97	75%	
		ENG			7	9	12	5	14	11									58		
		EFI			45	43	47	42	40	36									253		
		MFI						9	15	17									41		
		<b>Total</b>	<b>45</b>	<b>52</b>	<b>52</b>	<b>52</b>	<b>59</b>	<b>56</b>	<b>69</b>	<b>64</b>								<b>449</b>			
Stittsville PS	626	KGTN	72	77															149	99%	
		ENG			18	20	31	27	30	29									155		
		EFI			60	53	63	48	43	51									318		
		MFI																			
		<b>Total</b>	<b>72</b>	<b>77</b>	<b>78</b>	<b>73</b>	<b>94</b>	<b>75</b>	<b>73</b>	<b>80</b>								<b>622</b>			
New Stittsville SS	1353	ENG									97	94							191	99%	
		EFI									146	104							250		
		MFI									25	28							53		
		9-12												229	222	207	183		841		
		<b>Total</b>										<b>268</b>	<b>226</b>	<b>229</b>	<b>222</b>	<b>207</b>	<b>183</b>		<b>1335</b>		
<b>TOTAL</b>	<b>3221</b>		<b>117</b>	<b>129</b>	<b>130</b>	<b>125</b>	<b>153</b>	<b>131</b>	<b>142</b>	<b>144</b>	<b>268</b>	<b>226</b>	<b>229</b>	<b>222</b>	<b>207</b>	<b>183</b>	<b>0</b>	<b>2406</b>	<b>75%</b>		
Goulbourn MS	400	KGTN																	0	50%	
		ENG									21	19	25						16		81
		EFI										13	11								24
		MFI									26	19	23								68
		G.ENG										13	12								25
		<b>Total</b>								<b>47</b>	<b>64</b>	<b>71</b>					<b>16</b>	<b>198</b>			
South Carleton HS	1344	<b>Total</b>											<b>190</b>	<b>178</b>	<b>176</b>	<b>161</b>	<b>5</b>	<b>710</b>	53%		
<b>TOTAL</b>	<b>1744</b>		<b>0</b>	<b>0</b>	<b>0</b>	<b>0</b>	<b>0</b>	<b>0</b>	<b>0</b>	<b>47</b>	<b>64</b>	<b>71</b>	<b>190</b>	<b>178</b>	<b>176</b>	<b>161</b>	<b>21</b>	<b>908</b>	<b>52%</b>		
Glen Cairn PS	352	KGTN																	0	93%	
		ENG										85	81						8		174
		EFI										66	57								123
		MFI										13	16								29
		<b>Total</b>										<b>164</b>	<b>154</b>					<b>8</b>	<b>326</b>		
A.Y. Jackson SS	759	<b>Total</b>											<b>238</b>	<b>218</b>	<b>225</b>	<b>234</b>	<b>11</b>	<b>926</b>	122%		
<b>TOTAL</b>	<b>2117</b>		<b>0</b>	<b>0</b>	<b>0</b>	<b>0</b>	<b>0</b>	<b>0</b>	<b>0</b>	<b>0</b>	<b>164</b>	<b>154</b>	<b>238</b>	<b>218</b>	<b>225</b>	<b>234</b>	<b>19</b>	<b>1252</b>	<b>59%</b>		
Castlefrank ES	416	KGTN	54	55															109	72%	
		ENG			9	18	21												10		58
		EFI			45	45	44														134
		<b>Total</b>	<b>54</b>	<b>55</b>	<b>54</b>	<b>63</b>	<b>65</b>												<b>10</b>		<b>301</b>
Katimavik ES	387	KGTN																	0	91%	
		ENG						30	30	21	24	22							28		155
		EFI						47	44	31	38	38									198
		<b>Total</b>						<b>77</b>	<b>74</b>	<b>52</b>	<b>62</b>	<b>60</b>							<b>28</b>		<b>353</b>
Earl of March SS	1484	ENG									145	156							5	306	148%
		EFI									93	89								182	
		MFI									86	80								166	
		9-12												358	405	398	367	17	1545		
		<b>Total</b>										<b>324</b>	<b>325</b>	<b>358</b>	<b>405</b>	<b>398</b>	<b>367</b>	<b>22</b>	<b>2199</b>		
<b>TOTAL</b>	<b>2287</b>		<b>54</b>	<b>55</b>	<b>54</b>	<b>63</b>	<b>65</b>	<b>77</b>	<b>74</b>	<b>52</b>	<b>386</b>	<b>385</b>	<b>358</b>	<b>405</b>	<b>398</b>	<b>367</b>	<b>60</b>	<b>2853</b>	<b>125%</b>		

Note: SE = Congregated Special Education  
UF% - Utilization (Head Count Total/Capacity)

## Stittsville Secondary School Study 2023 Enrolment Projections - Working Option A

School	Capacity	Program	Yr 1	Yr 2	1	2	3	4	5	6	7	8	9	10	11	12	SE	Total	UF(%)	
A. Lorne Cassidy ES	600	KGTN	44	53														97	75%	
		ENG			7	9	11	8	6	14										55
		EFI			46	45	44	42	40	39										256
		MFI						13	10	17										40
		<b>Total</b>	<b>44</b>	<b>53</b>	<b>53</b>	<b>54</b>	<b>55</b>	<b>63</b>	<b>56</b>	<b>70</b>										<b>448</b>
Stittsville PS	626	KGTN	73	74														147	99%	
		ENG			18	21	25	33	30	30										157
		EFI			64	54	49	60	47	43										317
		<b>Total</b>	<b>73</b>	<b>74</b>	<b>82</b>	<b>75</b>	<b>74</b>	<b>93</b>	<b>77</b>	<b>73</b>										<b>621</b>
New Stittsville SS	1353	ENG										99	97					196	110%	
		EFI										160	147					307		
		MFI										19	28					47		
		9-12												248	244	230	212	934		
		<b>Total</b>										<b>278</b>	<b>272</b>	<b>248</b>	<b>244</b>	<b>230</b>	<b>212</b>			<b>1484</b>
<b>TOTAL</b>	<b>3221</b>		<b>117</b>	<b>127</b>	<b>135</b>	<b>129</b>	<b>129</b>	<b>156</b>	<b>133</b>	<b>143</b>	<b>278</b>	<b>272</b>	<b>248</b>	<b>244</b>	<b>230</b>	<b>212</b>	<b>0</b>	<b>2553</b>	<b>79%</b>	
Goulbourn MS	400	KGTN																0	48%	
		ENG								18	24	19						16		77
		EFI									13	13								26
		MFI									22	26	17							65
		G.ENG										12	13							25
		<b>Total</b>									<b>40</b>	<b>75</b>	<b>62</b>							<b>16</b>
South Carleton HS	1344	<b>Total</b>											<b>193</b>	<b>199</b>	<b>178</b>	<b>190</b>	<b>5</b>	<b>765</b>	57%	
<b>TOTAL</b>	<b>1744</b>		<b>0</b>	<b>0</b>	<b>0</b>	<b>0</b>	<b>0</b>	<b>0</b>	<b>40</b>	<b>75</b>	<b>62</b>		<b>193</b>	<b>199</b>	<b>178</b>	<b>190</b>	<b>21</b>	<b>958</b>	<b>55%</b>	
Glen Cairn PS	352	KGTN																0	107%	
		ENG									123	92						8		223
		EFI									61	62								123
		MFI									18	14								32
		<b>Total</b>									<b>202</b>	<b>168</b>						<b>8</b>		<b>378</b>
A.Y. Jackson SS	759	<b>Total</b>											<b>227</b>	<b>261</b>	<b>233</b>	<b>241</b>	<b>11</b>	<b>973</b>	128%	
<b>TOTAL</b>	<b>2117</b>										<b>202</b>	<b>168</b>	<b>227</b>	<b>261</b>	<b>233</b>	<b>241</b>	<b>19</b>	<b>1351</b>	<b>64%</b>	
Castlefrank ES	416	KGTN	53	57														110	71%	
		ENG			9	17	20											10		56
		EFI			46	41	41													128
		<b>Total</b>	<b>53</b>	<b>57</b>	<b>55</b>	<b>58</b>	<b>61</b>											<b>10</b>		<b>294</b>
Katimavik ES	387	KGTN																0	93%	
		ENG					24	33	32	20	25							28		162
		EFI					41	48	43	29	38									199
<b>Total</b>					<b>65</b>	<b>81</b>	<b>75</b>	<b>49</b>	<b>63</b>								<b>28</b>	<b>361</b>		
Earl of March SS	1484	ENG										122	166					5	293	152%
		EFI										72	90						162	
		MFI										89	85						174	
		9-12												386	376	430	422	17	1631	
		<b>Total</b>										<b>283</b>	<b>341</b>	<b>386</b>	<b>376</b>	<b>430</b>	<b>422</b>	<b>22</b>	<b>2260</b>	
<b>TOTAL</b>	<b>2287</b>		<b>53</b>	<b>57</b>	<b>55</b>	<b>58</b>	<b>61</b>	<b>65</b>	<b>81</b>	<b>75</b>	<b>332</b>	<b>404</b>	<b>386</b>	<b>376</b>	<b>430</b>	<b>422</b>	<b>60</b>	<b>2915</b>	<b>127%</b>	

**Note:** SE = Congregated Special Education  
UF% - Utilization (Head Count Total/Capacity)

## Stittsville Secondary School Study 2024 Enrolment Projections - Working Option A

School	Capacity	Program	Yr 1	Yr 2	1	2	3	4	5	6	7	8	9	10	11	12	SE	Total	UF(%)	
A. Lorne Cassidy ES	600	KGTN	45	52														97	74%	
		ENG			7	9	12	7	10	6								51		
		EFI			47	46	47	40	40	40								260		
		MFI						12	14	12								38		
		<b>Total</b>	<b>45</b>	<b>52</b>	<b>54</b>	<b>55</b>	<b>59</b>	<b>59</b>	<b>64</b>	<b>58</b>							<b>446</b>			
Stittsville PS	626	KGTN	72	75														147	100%	
		ENG			18	22	25	25	37	30								157		
		EFI			61	57	50	47	59	47								321		
		MFI																		
		<b>Total</b>	<b>72</b>	<b>75</b>	<b>79</b>	<b>79</b>	<b>75</b>	<b>72</b>	<b>96</b>	<b>77</b>							<b>625</b>			
New Stittsville SS	1353	ENG									99	101						200	117%	
		EFI									152	161						313		
		MFI									19	20						39		
		9-12											270	263	252	242		1027		
		<b>Total</b>										<b>270</b>	<b>282</b>	<b>270</b>	<b>263</b>	<b>252</b>	<b>242</b>	<b>1579</b>		
<b>TOTAL</b>	<b>3221</b>		<b>117</b>	<b>127</b>	<b>133</b>	<b>134</b>	<b>134</b>	<b>131</b>	<b>160</b>	<b>135</b>	<b>270</b>	<b>282</b>	<b>270</b>	<b>263</b>	<b>252</b>	<b>242</b>	<b>0</b>	<b>2650</b>	<b>82%</b>	
Goulbourn MS	400	KGTN																0	50%	
		ENG								20	21	24						16		81
		EFI									11	13						24		
		MFI								25	22	24						71		
		G.ENG									13	12						25		
		<b>Total</b>								<b>45</b>	<b>67</b>	<b>73</b>					<b>16</b>	<b>201</b>		
South Carleton HS	1344	<b>Total</b>										<b>211</b>	<b>202</b>	<b>199</b>	<b>185</b>	<b>5</b>	<b>802</b>	60%		
<b>TOTAL</b>	<b>1744</b>		<b>0</b>	<b>0</b>	<b>0</b>	<b>0</b>	<b>0</b>	<b>0</b>	<b>45</b>	<b>67</b>	<b>73</b>	<b>211</b>	<b>202</b>	<b>199</b>	<b>185</b>	<b>21</b>	<b>1003</b>	<b>58%</b>		
Glen Cairn PS	352	KGTN																0	123%	
		ENG									137	133						8		278
		EFI									60	55						115		
		MFI									21	19						40		
		<b>Total</b>									<b>218</b>	<b>207</b>					<b>8</b>	<b>433</b>		
A.Y. Jackson SS	759	<b>Total</b>										<b>235</b>	<b>250</b>	<b>280</b>	<b>251</b>	<b>11</b>	<b>1027</b>	135%		
<b>TOTAL</b>	<b>2117</b>									<b>218</b>	<b>207</b>	<b>235</b>	<b>250</b>	<b>280</b>	<b>251</b>	<b>19</b>	<b>1460</b>	<b>69%</b>		
Castlefrank ES	416	KGTN	53	56														109	70%	
		ENG			10	17	18											10		55
		EFI			48	42	38													128
		<b>Total</b>	<b>53</b>	<b>56</b>	<b>58</b>	<b>59</b>	<b>56</b>											<b>10</b>		<b>292</b>
Katimavik ES	387	KGTN																0	93%	
		ENG						23	27	35	31	21						28		165
		EFI						39	41	47	40	29								196
		<b>Total</b>						<b>62</b>	<b>68</b>	<b>82</b>	<b>71</b>	<b>50</b>						<b>28</b>		<b>361</b>
Earl of March SS	1484	ENG									124	140						5	269	153%
		EFI									95	70							165	
		MFI									72	88							160	
		9-12											404	405	398	455	17	1679		
		<b>Total</b>										<b>291</b>	<b>298</b>	<b>404</b>	<b>405</b>	<b>398</b>	<b>455</b>	<b>22</b>	<b>2273</b>	
<b>TOTAL</b>	<b>2287</b>		<b>53</b>	<b>56</b>	<b>58</b>	<b>59</b>	<b>56</b>	<b>62</b>	<b>68</b>	<b>82</b>	<b>362</b>	<b>348</b>	<b>404</b>	<b>405</b>	<b>398</b>	<b>455</b>	<b>60</b>	<b>2926</b>	<b>128%</b>	

**Note:** SE = Congregated Special Education  
UF% - Utilization (Head Count Total/Capacity)

## Stittsville Secondary School Study 2025 Enrolment Projections - Working Option A

School	Capacity	Program	Yr 1	Yr 2	1	2	3	4	5	6	7	8	9	10	11	12	SE	Total	UF(%)	
A. Lorne Cassidy ES	600	KGTN	44	53														97	76%	
		ENG			7	10	12	8	9	10								56		
		EFI			46	47	48	42	38	39								260		
		MFI							12	13	16							41		
<b>Total</b>		<b>44</b>	<b>53</b>	<b>53</b>	<b>57</b>	<b>60</b>	<b>62</b>	<b>60</b>	<b>65</b>								<b>454</b>			
Stittsville PS	626	KGTN	75	74														149	101%	
		ENG			18	21	27	26	29	37								158		
		EFI			62	55	53	48	46	59								323		
		<b>Total</b>	<b>75</b>	<b>74</b>	<b>80</b>	<b>76</b>	<b>80</b>	<b>74</b>	<b>75</b>	<b>96</b>								<b>630</b>		
New Stittsville SS	1353	ENG									92	101						193	122%	
		EFI									169	152						321		
		MFI									14	20						34		
		9-12											285	287	271	265		1108		
		<b>Total</b>									<b>275</b>	<b>273</b>	<b>285</b>	<b>287</b>	<b>271</b>	<b>265</b>		<b>1656</b>		
<b>TOTAL</b>	<b>3221</b>		<b>119</b>	<b>127</b>	<b>133</b>	<b>133</b>	<b>140</b>	<b>136</b>	<b>135</b>	<b>161</b>	<b>275</b>	<b>273</b>	<b>285</b>	<b>287</b>	<b>271</b>	<b>265</b>	<b>0</b>	<b>2740</b>	<b>85%</b>	
Goulbourn MS	400	KGTN																0	47%	
		ENG								16	22	21						16		75
		EFI									10	11								21
		MFI								20	25	20								65
		G.ENG									12	13								25
<b>Total</b>									<b>36</b>	<b>69</b>	<b>65</b>					<b>16</b>	<b>186</b>			
<b>South Carleton HS</b>	<b>1344</b>	<b>Total</b>											<b>205</b>	<b>221</b>	<b>202</b>	<b>207</b>	<b>5</b>	<b>840</b>	<b>63%</b>	
<b>TOTAL</b>	<b>1744</b>		<b>0</b>	<b>0</b>	<b>0</b>	<b>0</b>	<b>0</b>	<b>0</b>	<b>36</b>	<b>69</b>	<b>65</b>	<b>205</b>	<b>221</b>	<b>202</b>	<b>207</b>	<b>21</b>	<b>1026</b>	<b>59%</b>		
Glen Cairn PS	352	KGTN																0	138%	
		ENG									149	148						8		305
		EFI									78	56								134
		MFI									23	22								45
<b>Total</b>									<b>250</b>	<b>226</b>						<b>8</b>	<b>484</b>			
<b>A.Y. Jackson SS</b>	<b>759</b>	<b>Total</b>										<b>244</b>	<b>259</b>	<b>270</b>	<b>302</b>	<b>11</b>	<b>1086</b>	<b>143%</b>		
<b>TOTAL</b>	<b>2117</b>									<b>250</b>	<b>226</b>	<b>244</b>	<b>259</b>	<b>270</b>	<b>302</b>	<b>19</b>	<b>1570</b>	<b>74%</b>		
Castlefrank ES	416	KGTN	55	57														112	73%	
		ENG			11	18	19											10		58
		EFI			48	45	40													133
<b>Total</b>	<b>55</b>	<b>57</b>	<b>59</b>	<b>63</b>	<b>59</b>												<b>10</b>	<b>303</b>		
Katimavik ES	387	KGTN																0	96%	
		ENG						21	26	29	34	33						28		171
		EFI						36	40	41	44	41								202
<b>Total</b>						<b>57</b>	<b>66</b>	<b>70</b>	<b>78</b>	<b>74</b>							<b>28</b>	<b>373</b>		
Earl of March SS	1484	ENG									134	144						5	283	154%
		EFI									90	94							184	
		MFI									83	72							155	
		9-12											354	427	434	426	17	1658		
<b>Total</b>									<b>307</b>	<b>310</b>	<b>354</b>	<b>427</b>	<b>434</b>	<b>426</b>	<b>22</b>	<b>2280</b>				
<b>TOTAL</b>	<b>2287</b>		<b>55</b>	<b>57</b>	<b>59</b>	<b>63</b>	<b>59</b>	<b>57</b>	<b>66</b>	<b>70</b>	<b>385</b>	<b>384</b>	<b>354</b>	<b>427</b>	<b>434</b>	<b>426</b>	<b>60</b>	<b>2956</b>	<b>129%</b>	

**Note:** SE = Congregated Special Education  
UF% - Utilization (Head Count Total/Capacity)

## Stittsville Secondary School Study 2026 Enrolment Projections - Working Option A

School	Capacity	Program	Yr 1	Yr 2	1	2	3	4	5	6	7	8	9	10	11	12	SE	Total	UF(%)	
A. Lorne Cassidy ES	600	KGTN	45	52														97	76%	
		ENG			7	9	13	8	10	9										56
		EFI			47	46	49	43	40	38										263
		MFI						13	14	15										42
<b>Total</b>		<b>45</b>	<b>52</b>	<b>54</b>	<b>55</b>	<b>62</b>	<b>64</b>	<b>64</b>	<b>62</b>									<b>458</b>		
Stittsville PS	626	KGTN	77	77														154	99%	
		ENG			18	22	26	28	30	29										153
		EFI			61	56	51	51	47	46										312
		<b>Total</b>	<b>77</b>	<b>77</b>	<b>79</b>	<b>78</b>	<b>77</b>	<b>79</b>	<b>77</b>	<b>75</b>										<b>619</b>
New Stittsville SS	1353	ENG									122	95						217	131%	
		EFI									189	171						360		
		MFI									18	15						33		
		9-12											286	301	295	284		1166		
		<b>Total</b>									<b>329</b>	<b>281</b>	<b>286</b>	<b>301</b>	<b>295</b>	<b>284</b>		<b>1776</b>		
<b>TOTAL</b>	3221		122	129	133	133	139	143	141	137	329	281	286	301	295	284	0	2853	89%	
Goulbourn MS	400	KGTN																0	48%	
		ENG									21	18	22					16		77
		EFI										11	10							21
		MFI									25	20	23							68
		G.ENG										13	12							25
<b>Total</b>									<b>46</b>	<b>62</b>	<b>67</b>					<b>16</b>	<b>191</b>			
<b>South Carleton HS</b>	1344	<b>Total</b>											<b>198</b>	<b>215</b>	<b>221</b>	<b>211</b>	<b>5</b>	<b>850</b>	63%	
<b>TOTAL</b>	1744		0	0	0	0	0	0	0	46	62	67	198	215	221	211	21	1041	60%	
Glen Cairn PS	352	KGTN																0	145%	
		ENG										151	161					8		320
		EFI										73	71							144
		MFI										24	24							48
		<b>Total</b>									<b>248</b>	<b>256</b>						<b>8</b>		<b>512</b>
<b>A.Y. Jackson SS</b>	759	<b>Total</b>											<b>258</b>	<b>271</b>	<b>281</b>	<b>292</b>	<b>11</b>	<b>1113</b>	147%	
<b>TOTAL</b>	2117									248	256	258	271	281	292	19	1625	77%		
Castlefrank ES	416	KGTN	57	59														116	75%	
		ENG			11	20	20											10		61
		EFI			49	45	42													136
		<b>Total</b>	<b>57</b>	<b>59</b>	<b>60</b>	<b>65</b>	<b>62</b>											<b>10</b>		<b>313</b>
Katimavik ES	387	KGTN																0	94%	
		ENG						22	24	28	28	36						28		166
		EFI						38	37	40	39	44								198
		<b>Total</b>						<b>60</b>	<b>61</b>	<b>68</b>	<b>67</b>	<b>80</b>						<b>28</b>		<b>364</b>
Earl of March SS	1484	ENG									115	156						5	276	156%
		EFI									97	89							186	
		MFI									73	83							156	
		9-12											383	375	457	464	17	1696		
		<b>Total</b>									<b>285</b>	<b>328</b>	<b>383</b>	<b>375</b>	<b>457</b>	<b>464</b>	<b>22</b>	<b>2314</b>		
<b>TOTAL</b>	2287		57	59	60	65	62	60	61	68	352	408	383	375	457	464	60	2991	131%	

**Note:** SE = Congregated Special Education  
UF% - Utilization (Head Count Total/Capacity)

## Working Option B

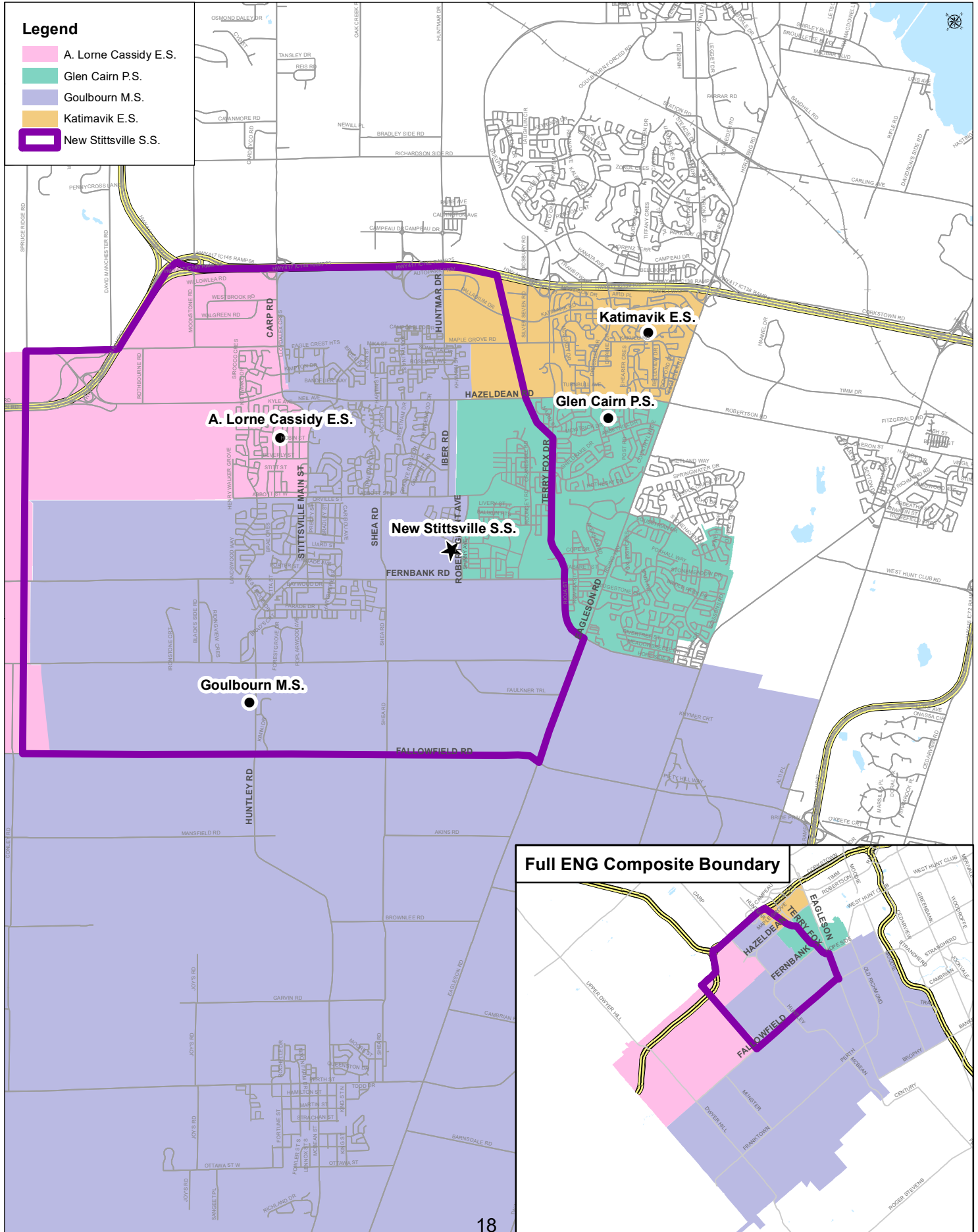
**New Stittsville SS is Grade 7 to 8 ENG/EFI/MFI and Grade 9 to 12 ENG/IMM with an attendance boundary that includes all Planning Areas\* west of the Carp River/Terry Fox Drive, except for only a portion of Area 12**

- Students residing within the western portion of the current **A. Lorne Cassidy ES** K to 8 ENG boundary (west of Spruce Ridge Road) would attend A. Lorne Cassidy ES for K to 6 ENG/EFI/MFI and then feed to Goulbourn MS for 7 & 8 and then continue to feed to South Carleton HS for 9 to 12.
- Students residing within the eastern portion of the current **A. Lorne Cassidy ES** K to 8 ENG boundary (east of Spruce Ridge Road) and north of Fallowfield Road would attend A. Lorne Cassidy ES for K to 6 ENG/EFI/MFI and feed to New Stittsville SS for 7 to 12.

\* *Planning Areas were included in Working Group Meeting #1 information package, dated November 27<sup>th</sup>, 2019.*



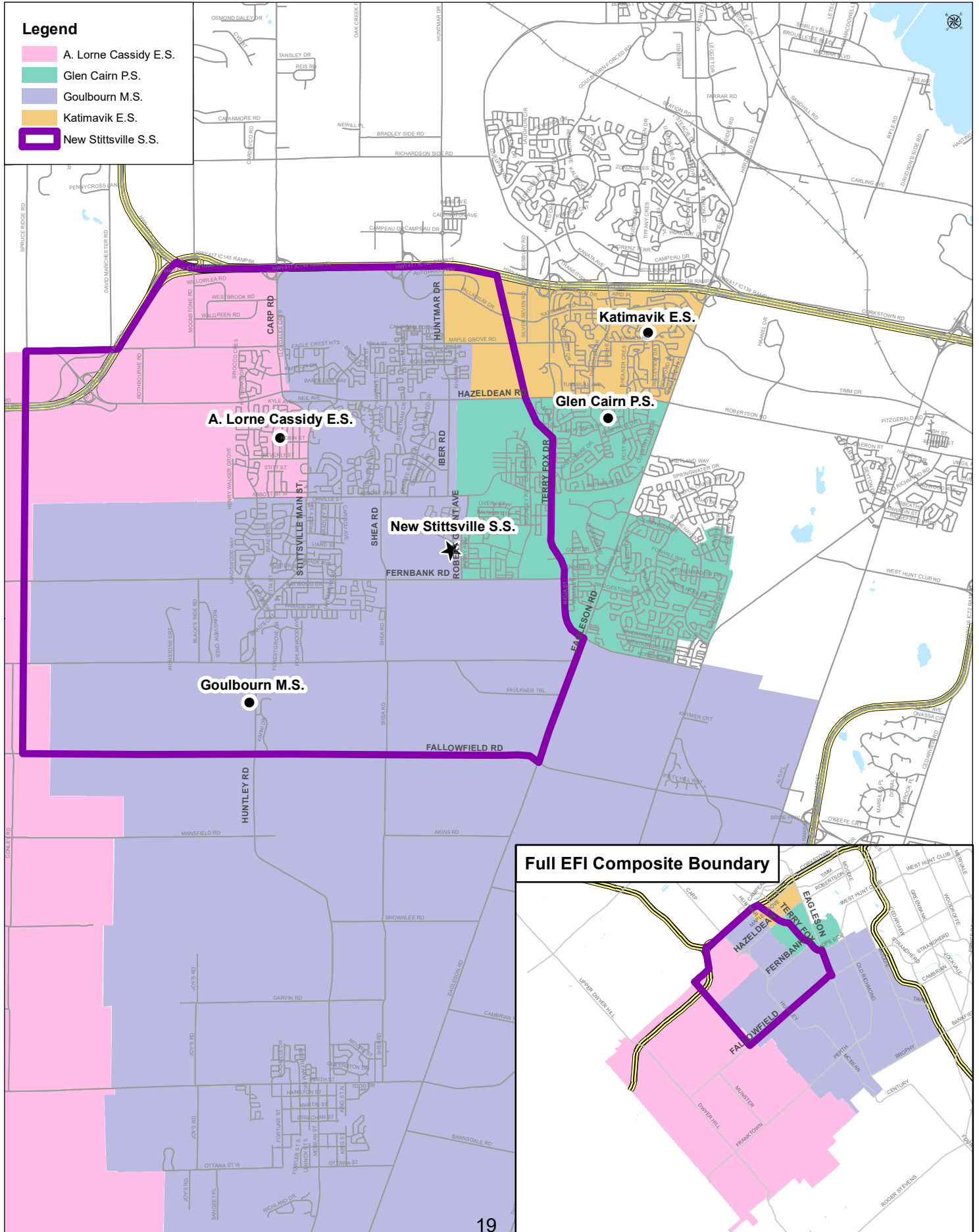
# Working Option B: New Stittsville S.S. Study 7 to 8 ENG Composite Map







# Working Option B: New Stittsville S.S. Study 7 to 8 EFI Composite Map





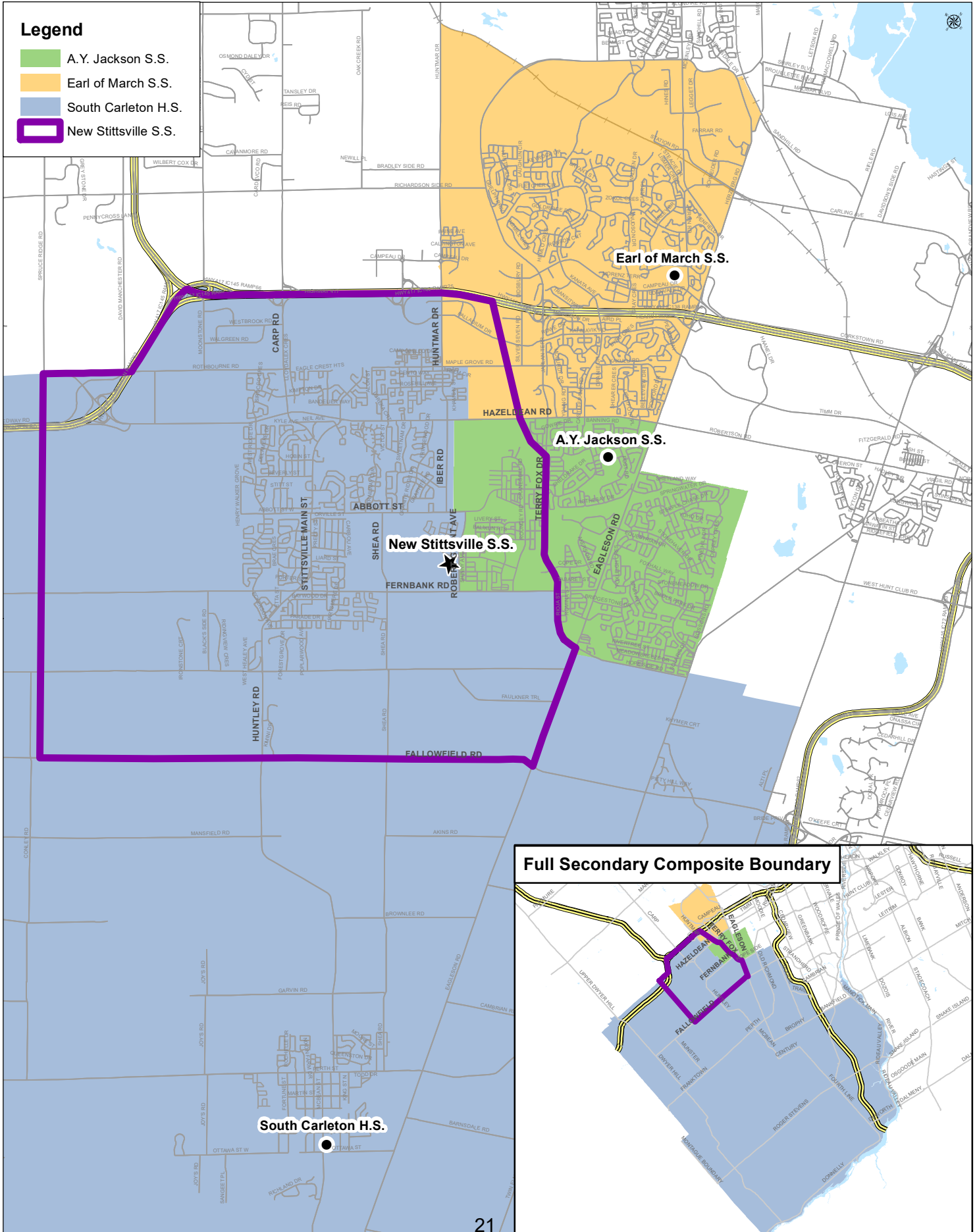


OTTAWA-CARLETON DISTRICT SCHOOL BOARD

# Working Option B: New Stittsville S.S. Study Secondary School Composite Map

## Legend

- A.Y. Jackson S.S.
- Earl of March S.S.
- South Carleton H.S.
- New Stittsville S.S.



## **Working Option B**

***New Stittsville SS is Grade 7 to 8 ENG/EFI/MFI and Grade 9 to 12 ENG/IMM with an attendance area that includes all Planning Areas west of the Carp River/Terry Fox Drive, except for only a portion of Area 12***

The New Stittsville Secondary School attendance boundary would be comprised of the K to 6 English Program with Core French attendance boundaries of Stittsville PS, Westwind PS, New Fernbank ES, the portion of the Castlefrank ES (K-3)/Katimavik ES (4-8) attendance boundary west of the Carp River/Terry Fox Drive and the portion of the A. Lorne Cassidy ES attendance boundary east of Spruce Ridge Road.

This boundary takes steps towards creating a family of schools feeding pattern for Stittsville area schools. All Stittsville area elementary schools would have a standardized K to 6 grade structure.

### **Outcomes for Consideration:**

- The two considerations identified under Option A remain (see Option A).
- Additionally under Option B, a second feeding pattern split is created for A. Lorne Cassidy ES. Students residing in the portion of the A. Lorne Cassidy ES ENG attendance boundary west of Spruce Ridge Road would be directed to Goulbourn MS for 7 & 8 ENG/EFI/MFI and continue to be directed to South Carleton HS for 9 to 12. Students residing east of Spruce Ridge Road and north of Fallowfield Road would be directed to the New Stittsville SS for 7 to 12.

### **Individual School Summaries**

**A. Lorne Cassidy ES** becomes a K to 6 ENG/EFI/MFI school serving all its existing attendance boundary area.

- **Students residing south of Fallowfield Road would feed to Goulbourn MS for 7 & 8 ENG/EFI/MFI and continue to feed to South Carleton HS for 9 to 12.**
- **Students residing north of Fallowfield Road and west of Spruce Ridge Road would feed to Goulbourn MS for 7 & 8 ENG/EFI/MFI and continue to feed to South Carleton HS for 9 to 12.**
- **Students residing north of Fallowfield Road and east of Spruce Ridge Road would feed to New Stittsville SS for 7 to 12.**
- **MFI students would continue to feed into the school at grade 4 from Stittsville PS, Westwind PS, and New Fernbank ES, upon its future opening (TBD).**

**New Fernbank ES** (opening date TBD) remains a K to 6 ENG/EFI school to serve students within its previously approved attendance boundary area.

- Students would feed to New Stittsville SS for 7 to 12.

**Stittsville PS** remains a K to 6 ENG/EFI school serving all its existing attendance boundary area.

- Students would feed to New Stittsville SS for 7 to 12.

**Westwind PS** remains a K to 6 ENG/EFI school serving all its existing attendance boundary area.

- Students residing north of Fallowfield Road would feed to New Stittsville SS for 7 to 12.
- Students residing south of Fallowfield Road would continue to feed to Goulbourn MS for 7 and 8, and South Carleton HS for 9 to 12.

**Goulbourn MS** remains a 6 to 8 ENG/MFI, 7 & 8 EFI school, with a reduced attendance boundary, serving students residing south of Fallowfield Road, students residing north of Fallowfield Road and east of Eagleson Road, **and students residing north of Fallowfield Road and west of Spruce Ridge Road.**

- **Richmond PS ENG/MFI students would continue to feed into the school at grade 6 – including area north of Fallowfield Road and east of Eagleson Road.**
- **A. Lorne Cassidy ES ENG/EFI/MFI students residing south of Fallowfield Road would feed into the school at grade 7.**
- **A. Lorne Cassidy ES ENG/EFI/MFI students residing north of Fallowfield Road and west of Spruce Ridge Road would feed into the school at grade 7.**
- **Westwind PS ENG/EFI students residing south of Fallowfield Road would continue to feed into the school at grade 7.**
- **Grade 8 students would continue to feed to South Carleton HS for 9 to 12.**

**Glen Cairn PS** remains a 7 and 8 ENG/EFI/MFI school with a reduced attendance boundary. The Fernbank portion of its boundary (west of the Carp River/Terry Fox Drive) would be redirected to New Stittsville SS.

- Students residing east of the Carp River/Terry Fox Drive would continue to feed to A.Y. Jackson SS for 9 to 12.

**A.Y. Jackson SS** remains a 9 to 12 ENG/IMM school with a reduced attendance boundary. The Fernbank portion of its boundary (west of the Carp River/Terry Fox Drive) would be redirected to New Stittsville SS for 9 to 12.

**Castlefrank ES** remains a K to 3 ENG/EFI school serving all its existing attendance boundary area.

**Katimavik ES** remains a 4 to 8 ENG/EFI school with a reduced grade 7 & 8 attendance boundary. A future Kanata West residential development area (west of the Carp River/Terry Fox Drive) would be redirected to New Stittsville SS for 7 & 8.

- Students residing west of the Carp River/Terry Fox Drive would feed to the New Stittsville SS at grade 7.
- Students residing east of the Carp River/Terry Fox Drive would continue to feed to Earl of March SS for 9 to 12.

**Earl of March SS** remains a 7 to 12 school with a reduced 9 to 12 attendance boundary. A future Kanata West residential development area (west of the Carp River/Terry Fox Drive) would be redirected to New Stittsville SS for 9 to 12.

#### **Factors to Consider Under This Option:**

An attendance boundary is created for New Stittsville SS which would see portables on site soon after opening. Under this option the school's projected enrolment with a full complement of grades (7 to 12) in 2022 is 1293 students and its utilization rate is 96%. This would leave the school with only 60 surplus pupil places to serve future student growth from the boundary area.

It is anticipated that portables for instructional use would most likely be needed on site the year after opening.

1. Does the proposed New Stittsville SS attendance boundary make geographical sense – reflect neighbourhood/community alignments?
2. Should the new school's attendance boundary be reduced further to better manage accommodation pressures for a longer period of time?



## Stittsville Secondary School Study 2022 Enrolment Projections - Working Option B

School	Capacity	Program	Yr 1	Yr 2	1	2	3	4	5	6	7	8	9	10	11	12	SE	Total	UF(%)		
A. Lorne Cassidy ES	600	KGTN	45	52															97	75%	
		ENG			7	9	12	5	14	11									58		
		EFI			45	43	47	42	40	36									253		
		MFI						9	15	17									41		
		<b>Total</b>	<b>45</b>	<b>52</b>	<b>52</b>	<b>52</b>	<b>59</b>	<b>56</b>	<b>69</b>	<b>64</b>								<b>449</b>			
Stittsville PS	626	KGTN	72	77															149	99%	
		ENG			18	20	31	27	30	29									155		
		EFI			60	53	63	48	43	51									318		
		MFI																			
		<b>Total</b>	<b>72</b>	<b>77</b>	<b>78</b>	<b>73</b>	<b>94</b>	<b>75</b>	<b>73</b>	<b>80</b>								<b>622</b>			
New Stittsville SS	1353	ENG									94	91							185	96%	
		EFI									142	95							237		
		MFI									23	28							51		
		9-12												221	216	202	181		820		
		<b>Total</b>										<b>259</b>	<b>214</b>	<b>221</b>	<b>216</b>	<b>202</b>	<b>181</b>		<b>1293</b>		
<b>TOTAL</b>	3221		117	129	130	125	153	131	142	144	259	214	221	216	202	181	0	2364	73%		
Goulbourn MS	400	KGTN																	0	55%	
		ENG								21	22	28						16	87		
		EFI									17	20							37		
		MFI								26	21	23							70		
		G.ENG									13	12							25		
		<b>Total</b>							<b>47</b>	<b>73</b>	<b>83</b>						<b>16</b>	<b>219</b>			
South Carleton HS	1344	<b>Total</b>											<b>198</b>	<b>184</b>	<b>181</b>	<b>163</b>	<b>5</b>	<b>731</b>	54%		
<b>TOTAL</b>	1744		0	0	0	0	0	0	0	47	73	83	198	184	181	163	21	950	54%		
Glen Cairn PS	352	KGTN																	0	93%	
		ENG									85	81						8	174		
		EFI									66	57							123		
		MFI									13	16							29		
		<b>Total</b>										<b>164</b>	<b>154</b>					<b>8</b>	<b>326</b>		
A.Y. Jackson SS	759	<b>Total</b>											<b>238</b>	<b>218</b>	<b>225</b>	<b>234</b>	<b>11</b>	<b>926</b>	122%		
<b>TOTAL</b>	2117		0	0	0	0	0	0	0	0	164	154	238	218	225	234	19	1252	59%		
Castlefrank ES	416	KGTN	54	55															109	72%	
		ENG			9	18	21											10	58		
		EFI			45	45	44												134		
		<b>Total</b>	<b>54</b>	<b>55</b>	<b>54</b>	<b>63</b>	<b>65</b>											<b>10</b>	<b>301</b>		
Katimavik ES	387	KGTN																	0	91%	
		ENG						30	30	21	24	22							28		155
		EFI						47	44	31	38	38							198		
		<b>Total</b>						<b>77</b>	<b>74</b>	<b>52</b>	<b>62</b>	<b>60</b>						<b>28</b>	<b>353</b>		
Earl of March SS	1484	ENG									145	156						5	306	148%	
		EFI									93	89							182		
		MFI									86	80							166		
		9-12												358	405	398	367	17	1545		
		<b>Total</b>										<b>324</b>	<b>325</b>	<b>358</b>	<b>405</b>	<b>398</b>	<b>367</b>	<b>22</b>	<b>2199</b>		
<b>TOTAL</b>	2287		54	55	54	63	65	77	74	52	386	385	358	405	398	367	60	2853	125%		

**Note:** SE = Congregated Special Education  
UF% - Utilization (Head Count Total/Capacity)

## Stittsville Secondary School Study 2023 Enrolment Projections - Working Option B

School	Capacity	Program	Yr 1	Yr 2	1	2	3	4	5	6	7	8	9	10	11	12	SE	Total	UF(%)	
A. Lorne Cassidy ES	600	KGTN	44	53														97	75%	
		ENG			7	9	11	8	6	14								55		
		EFI			46	45	44	42	40	39								256		
		MFI						13	10	17								40		
		<b>Total</b>	<b>44</b>	<b>53</b>	<b>53</b>	<b>54</b>	<b>55</b>	<b>63</b>	<b>56</b>	<b>70</b>										<b>448</b>
Stittsville PS	626	KGTN	73	74														147	99%	
		ENG			18	21	25	33	30	30								157		
		EFI			64	54	49	60	47	43								317		
		<b>Total</b>	<b>73</b>	<b>74</b>	<b>82</b>	<b>75</b>	<b>74</b>	<b>93</b>	<b>77</b>	<b>73</b>										<b>621</b>
New Stittsville SS	1353	ENG										97	94					191	106%	
		EFI										153	143					296		
		MFI										18	26					44		
		9-12												236	236	224	207	903		
		<b>Total</b>										<b>268</b>	<b>263</b>	<b>236</b>	<b>236</b>	<b>224</b>	<b>207</b>			<b>1434</b>
<b>TOTAL</b>	<b>3221</b>		<b>117</b>	<b>127</b>	<b>135</b>	<b>129</b>	<b>129</b>	<b>156</b>	<b>133</b>	<b>143</b>	<b>268</b>	<b>263</b>	<b>236</b>	<b>236</b>	<b>224</b>	<b>207</b>	<b>0</b>	<b>2503</b>	<b>78%</b>	
Goulbourn MS	400	KGTN																0	53%	
		ENG								18	26	22						16		82
		EFI									20	17								37
		MFI									22	27	19							68
		G.ENG										12	13							25
		<b>Total</b>									<b>40</b>	<b>85</b>	<b>71</b>							<b>16</b>
South Carleton HS	1344	<b>Total</b>											<b>205</b>	<b>207</b>	<b>184</b>	<b>195</b>	<b>5</b>	<b>796</b>	59%	
<b>TOTAL</b>	<b>1744</b>		<b>0</b>	<b>0</b>	<b>0</b>	<b>0</b>	<b>0</b>	<b>0</b>	<b>40</b>	<b>85</b>	<b>71</b>		<b>205</b>	<b>207</b>	<b>184</b>	<b>195</b>	<b>21</b>	<b>1008</b>	<b>58%</b>	
Glen Cairn PS	352	KGTN																0	107%	
		ENG										123	92					8		223
		EFI										61	62							123
		MFI										18	14							32
		<b>Total</b>										<b>202</b>	<b>168</b>					<b>8</b>		<b>378</b>
A.Y. Jackson SS	759	<b>Total</b>											<b>227</b>	<b>261</b>	<b>233</b>	<b>241</b>	<b>11</b>	<b>973</b>	128%	
<b>TOTAL</b>	<b>2117</b>										<b>202</b>	<b>168</b>	<b>227</b>	<b>261</b>	<b>233</b>	<b>241</b>	<b>19</b>	<b>1351</b>	<b>64%</b>	
Castlefrank ES	416	KGTN	53	57														110	71%	
		ENG			9	17	20											10		56
		EFI			46	41	41													128
		<b>Total</b>	<b>53</b>	<b>57</b>	<b>55</b>	<b>58</b>	<b>61</b>											<b>10</b>		<b>294</b>
Katimavik ES	387	KGTN																0	93%	
		ENG						24	33	32	20	25						28		162
		EFI						41	48	43	29	38								199
<b>Total</b>						<b>65</b>	<b>81</b>	<b>75</b>	<b>49</b>	<b>63</b>							<b>28</b>	<b>361</b>		
Earl of March SS	1484	ENG										122	166					5	293	152%
		EFI										72	90						162	
		MFI										89	85						174	
		9-12												386	376	430	422	17	1631	
		<b>Total</b>										<b>283</b>	<b>341</b>	<b>386</b>	<b>376</b>	<b>430</b>	<b>422</b>	<b>22</b>	<b>2260</b>	
<b>TOTAL</b>	<b>2287</b>		<b>53</b>	<b>57</b>	<b>55</b>	<b>58</b>	<b>61</b>	<b>65</b>	<b>81</b>	<b>75</b>	<b>332</b>	<b>404</b>	<b>386</b>	<b>376</b>	<b>430</b>	<b>422</b>	<b>60</b>	<b>2915</b>	<b>127%</b>	

**Note:** SE = Congregated Special Education  
UF% - Utilization (Head Count Total/Capacity)



## Stittsville Secondary School Study 2024 Enrolment Projections - Working Option B

School	Capacity	Program	Yr 1	Yr 2	1	2	3	4	5	6	7	8	9	10	11	12	SE	Total	UF(%)	
A. Lorne Cassidy ES	600	KGTN	45	52														97	74%	
		ENG			7	9	12	7	10	6								51		
		EFI			47	46	47	40	40	40								260		
		MFI						12	14	12								38		
		<b>Total</b>	<b>45</b>	<b>52</b>	<b>54</b>	<b>55</b>	<b>59</b>	<b>59</b>	<b>64</b>	<b>58</b>							<b>446</b>			
Stittsville PS	626	KGTN	72	75														147	100%	
		ENG			18	22	25	25	37	30								157		
		EFI			61	57	50	47	59	47								321		
		<b>Total</b>	<b>72</b>	<b>75</b>	<b>79</b>	<b>79</b>	<b>75</b>	<b>72</b>	<b>96</b>	<b>77</b>								<b>625</b>		
New Stittsville SS	1353	KGTN									98	99						197	113%	
		EFI									149	154						303		
		MFI									18	19						37		
		9-12											261	251	244	236		992		
		<b>Total</b>										<b>265</b>	<b>272</b>	<b>261</b>	<b>251</b>	<b>244</b>	<b>236</b>			<b>1529</b>
<b>TOTAL</b>	<b>3221</b>		<b>117</b>	<b>127</b>	<b>133</b>	<b>134</b>	<b>134</b>	<b>131</b>	<b>160</b>	<b>135</b>	<b>265</b>	<b>272</b>	<b>261</b>	<b>251</b>	<b>244</b>	<b>236</b>	<b>0</b>	<b>2600</b>	<b>81%</b>	
Goulbourn MS	400	KGTN																0	54%	
		ENG								20	22	26						16		84
		EFI									14	20								34
		MFI								25	23	25								73
		G.ENG									13	12								25
		<b>Total</b>								<b>45</b>	<b>72</b>	<b>83</b>					<b>16</b>	<b>216</b>		
South Carleton HS	1344	<b>Total</b>										<b>220</b>	<b>214</b>	<b>207</b>	<b>191</b>	<b>5</b>	<b>837</b>	62%		
<b>TOTAL</b>	<b>1744</b>		<b>0</b>	<b>0</b>	<b>0</b>	<b>0</b>	<b>0</b>	<b>0</b>	<b>45</b>	<b>72</b>	<b>83</b>	<b>220</b>	<b>214</b>	<b>207</b>	<b>191</b>	<b>21</b>	<b>1053</b>	<b>60%</b>		
Glen Cairn PS	352	KGTN																0	123%	
		ENG									137	133						8		278
		EFI									60	55								115
		MFI									21	19								40
		<b>Total</b>									<b>218</b>	<b>207</b>					<b>8</b>	<b>433</b>		
A.Y. Jackson SS	759	<b>Total</b>										<b>235</b>	<b>250</b>	<b>280</b>	<b>251</b>	<b>11</b>	<b>1027</b>	135%		
<b>TOTAL</b>	<b>2117</b>									<b>218</b>	<b>207</b>	<b>235</b>	<b>250</b>	<b>280</b>	<b>251</b>	<b>19</b>	<b>1460</b>	<b>69%</b>		
Castlefrank ES	416	KGTN	53	56														109	70%	
		ENG			10	17	18											10		55
		EFI			48	42	38													128
		<b>Total</b>	<b>53</b>	<b>56</b>	<b>58</b>	<b>59</b>	<b>56</b>											<b>10</b>		<b>292</b>
Katimavik ES	387	KGTN																0	93%	
		ENG						23	27	35	31	21						28		165
		EFI						39	41	47	40	29								196
		<b>Total</b>						<b>62</b>	<b>68</b>	<b>82</b>	<b>71</b>	<b>50</b>						<b>28</b>		<b>361</b>
Earl of March SS	1484	ENG									124	140						5	269	153%
		EFI									95	70							165	
		MFI									72	88							160	
		9-12											404	405	398	455	17	1679		
		<b>Total</b>										<b>291</b>	<b>298</b>	<b>404</b>	<b>405</b>	<b>398</b>	<b>455</b>	<b>22</b>	<b>2273</b>	
<b>TOTAL</b>	<b>2287</b>		<b>53</b>	<b>56</b>	<b>58</b>	<b>59</b>	<b>56</b>	<b>62</b>	<b>68</b>	<b>82</b>	<b>362</b>	<b>348</b>	<b>404</b>	<b>405</b>	<b>398</b>	<b>455</b>	<b>60</b>	<b>2926</b>	<b>128%</b>	

**Note:** SE = Congregated Special Education  
UF% - Utilization (Head Count Total/Capacity)

## Stittsville Secondary School Study 2025 Enrolment Projections - Working Option B

School	Capacity	Program	Yr 1	Yr 2	1	2	3	4	5	6	7	8	9	10	11	12	SE	Total	UF(%)	
A. Lorne Cassidy ES	600	KGTN	44	53														97	76%	
		ENG			7	10	12	8	9	10								56		
		EFI			46	47	48	42	38	39								260		
		MFI							12	13	16							41		
		<b>Total</b>	<b>44</b>	<b>53</b>	<b>53</b>	<b>57</b>	<b>60</b>	<b>62</b>	<b>60</b>	<b>65</b>										<b>454</b>
Stittsville PS	626	KGTN	75	74														149	101%	
		ENG			18	21	27	26	29	37								158		
		EFI			62	55	53	48	46	59								323		
		<b>Total</b>	<b>75</b>	<b>74</b>	<b>80</b>	<b>76</b>	<b>80</b>	<b>74</b>	<b>75</b>	<b>96</b>										<b>630</b>
New Stittsville SS	1353	ENG									91	100						191	119%	
		EFI									162	149						311		
		MFI									14	19						33		
		9-12											275	278	259	257		1069		
		<b>Total</b>									<b>267</b>	<b>268</b>	<b>275</b>	<b>278</b>	<b>259</b>	<b>257</b>				<b>1604</b>
<b>TOTAL</b>	<b>3221</b>		<b>119</b>	<b>127</b>	<b>133</b>	<b>133</b>	<b>140</b>	<b>136</b>	<b>135</b>	<b>161</b>	<b>267</b>	<b>268</b>	<b>275</b>	<b>278</b>	<b>259</b>	<b>257</b>	<b>0</b>	<b>2688</b>	<b>83%</b>	
Goulbourn MS	400	KGTN																0	50%	
		ENG								16	23	22						16		77
		EFI									17	14								31
		MFI								20	25	21								66
		G.ENG										12	13							25
		<b>Total</b>									<b>36</b>	<b>77</b>	<b>70</b>							<b>16</b>
<b>South Carleton HS</b>	<b>1344</b>	<b>Total</b>											<b>215</b>	<b>230</b>	<b>214</b>	<b>215</b>	<b>5</b>	<b>879</b>	<b>65%</b>	
<b>TOTAL</b>	<b>1744</b>		<b>0</b>	<b>0</b>	<b>0</b>	<b>0</b>	<b>0</b>	<b>0</b>	<b>36</b>	<b>77</b>	<b>70</b>	<b>215</b>	<b>230</b>	<b>214</b>	<b>215</b>	<b>21</b>	<b>1078</b>	<b>62%</b>		
Glen Cairn PS	352	KGTN																0	138%	
		ENG									149	148						8		305
		EFI									78	56								134
		MFI									23	22								45
		<b>Total</b>									<b>250</b>	<b>226</b>						<b>8</b>		<b>484</b>
<b>A.Y. Jackson SS</b>	<b>759</b>	<b>Total</b>										<b>244</b>	<b>259</b>	<b>270</b>	<b>302</b>	<b>11</b>	<b>1086</b>	<b>143%</b>		
<b>TOTAL</b>	<b>2117</b>									<b>250</b>	<b>226</b>	<b>244</b>	<b>259</b>	<b>270</b>	<b>302</b>	<b>19</b>	<b>1570</b>	<b>74%</b>		
Castlefrank ES	416	KGTN	55	57														112	73%	
		ENG			11	18	19											10		58
		EFI			48	45	40													133
		<b>Total</b>	<b>55</b>	<b>57</b>	<b>59</b>	<b>63</b>	<b>59</b>													<b>10</b>
Katimavik ES	387	KGTN																0	96%	
		ENG						21	26	29	34	33						28		171
		EFI						36	40	41	44	41								202
		<b>Total</b>						<b>57</b>	<b>66</b>	<b>70</b>	<b>78</b>	<b>74</b>						<b>28</b>		<b>373</b>
Earl of March SS	1484	ENG									134	144						5	283	154%
		EFI									90	94							184	
		MFI									83	72							155	
		9-12											354	427	434	426	17	1658		
		<b>Total</b>									<b>307</b>	<b>310</b>	<b>354</b>	<b>427</b>	<b>434</b>	<b>426</b>	<b>22</b>		<b>2280</b>	
<b>TOTAL</b>	<b>2287</b>		<b>55</b>	<b>57</b>	<b>59</b>	<b>63</b>	<b>59</b>	<b>57</b>	<b>66</b>	<b>70</b>	<b>385</b>	<b>384</b>	<b>354</b>	<b>427</b>	<b>434</b>	<b>426</b>	<b>60</b>	<b>2956</b>	<b>129%</b>	

**Note:** SE = Congregated Special Education  
UF% - Utilization (Head Count Total/Capacity)

## Stittsville Secondary School Study 2026 Enrolment Projections - Working Option B

School	Capacity	Program	Yr 1	Yr 2	1	2	3	4	5	6	7	8	9	10	11	12	SE	Total	UF(%)	
A. Lorne Cassidy ES	600	KGTN	45	52														97	76%	
		ENG			7	9	13	8	10	9								56		
		EFI			47	46	49	43	40	38								263		
		MFI						13	14	15								42		
<b>Total</b>		<b>45</b>	<b>52</b>	<b>54</b>	<b>55</b>	<b>62</b>	<b>64</b>	<b>64</b>	<b>62</b>								<b>458</b>			
Stittsville PS	626	KGTN	77	77														154	99%	
		ENG			18	22	26	28	30	29								153		
		EFI			61	56	51	51	47	46								312		
		<b>Total</b>	<b>77</b>	<b>77</b>	<b>79</b>	<b>78</b>	<b>77</b>	<b>79</b>	<b>77</b>	<b>75</b>										<b>619</b>
New Stittsville SS	1353	ENG									121	94						215	128%	
		EFI									184	164						348		
		MFI									18	15						33		
		9-12											281	291	286	272		1130		
		<b>Total</b>									<b>323</b>	<b>273</b>	<b>281</b>	<b>291</b>	<b>286</b>	<b>272</b>				<b>1726</b>
<b>TOTAL</b>	3221		122	129	133	133	139	143	141	137	323	273	281	291	286	272	0	2803	87%	
Goulbourn MS	400	KGTN																0	51%	
		ENG									21	19	23					16		79
		EFI										16	17							33
		MFI									25	20	23							68
		G.ENG										13	12							25
<b>Total</b>										<b>46</b>	<b>68</b>	<b>75</b>					<b>16</b>	<b>205</b>		
<b>South Carleton HS</b>	1344	<b>Total</b>											<b>203</b>	<b>225</b>	<b>230</b>	<b>223</b>	<b>5</b>	<b>886</b>	66%	
<b>TOTAL</b>	1744		0	0	0	0	0	0	0	46	68	75	203	225	230	223	21	1091	63%	
Glen Cairn PS	352	KGTN																0	145%	
		ENG										151	161					8		320
		EFI										73	71							144
		MFI										24	24							48
		<b>Total</b>										<b>248</b>	<b>256</b>					<b>8</b>		<b>512</b>
<b>A.Y. Jackson SS</b>	759	<b>Total</b>											<b>258</b>	<b>271</b>	<b>281</b>	<b>292</b>	<b>11</b>	<b>1113</b>	147%	
<b>TOTAL</b>	2117									248	256	258	271	281	292	19	1625	77%		
Castlefrank ES	416	KGTN	57	59														116	75%	
		ENG			11	20	20											10		61
		EFI			49	45	42													136
		<b>Total</b>	<b>57</b>	<b>59</b>	<b>60</b>	<b>65</b>	<b>62</b>											<b>10</b>		<b>313</b>
Katimavik ES	387	KGTN																0	94%	
		ENG						22	24	28	28	36						28		166
		EFI						38	37	40	39	44								198
		<b>Total</b>						<b>60</b>	<b>61</b>	<b>68</b>	<b>67</b>	<b>80</b>						<b>28</b>		<b>364</b>
Earl of March SS	1484	ENG									115	156						5	276	156%
		EFI									97	89							186	
		MFI									73	83							156	
		9-12											383	375	457	464	17	1696		
		<b>Total</b>									<b>285</b>	<b>328</b>	<b>383</b>	<b>375</b>	<b>457</b>	<b>464</b>	<b>22</b>		<b>2314</b>	
<b>TOTAL</b>	2287		57	59	60	65	62	60	61	68	352	408	383	375	457	464	60	2991	131%	

**Note:** SE = Congregated Special Education  
UF% - Utilization (Head Count Total/Capacity)

# **New Stittsville Secondary School**

As part of the Site Plan Control application submission to the City of Ottawa to permit the development of the New Stittsville Secondary School the following **potential** school design document was commissioned:

## **Schematic Design Submission – August 2019**

- Site Plan
- Elevations and Perspective
- Floor Plan



# SCHEMATIC DESIGN SUBMISSION

AUGUST  
2019



**NEW STITTSVILLE HIGH SCHOOL**  
SCHEMATIC DESIGN SUBMISSION



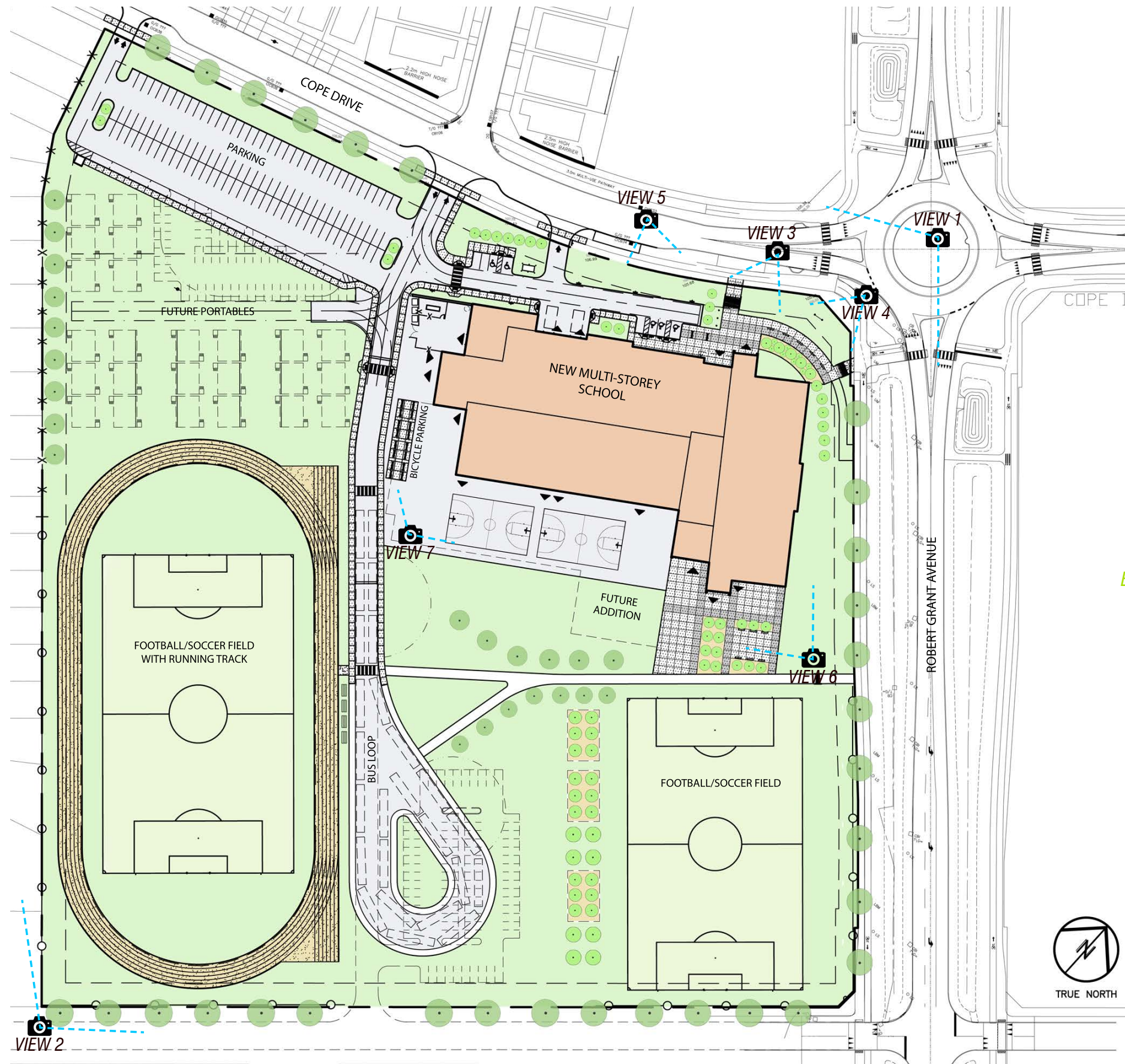


ILLUSTRATION OF CONTEXTUAL ANALYSIS

# NEW STITTSVILLE HIGH SCHOOL

SCHEMATIC DESIGN SUBMISSION





LOCATION OF VIEW: 

VIEW X

EXTENTS/PERSPECTIVE: 

## BUILDING MASSING: PROPOSED SITE PLAN

LOCATIONS OF 3D-PERSPECTIVE VIEWS





**BUILDING MASSING: VIEW 1**  
*AERIAL VIEW SHOWN WITH CURRENT AND PROPOSED/FUTURE CONTEXT*

**NEW STITTSVILLE HIGH SCHOOL**  
SCHEMATIC DESIGN SUBMISSION





**PUBLIC REALM: VIEW 4**

*VIEW OF THE FRONT ENTRANCE FROM THE CORNER OF ROBERT GRANT AVENUE AND COPE DRIVE*

**NEW STITTSVILLE HIGH SCHOOL**

SCHEMATIC DESIGN SUBMISSION







**PUBLIC REALM: VIEW 5**

*FRONT ENTRANCE VIEW FROM FRONT COPE DRIVE*







**PUBLIC REALM: VIEW 6**

*VIEW OF CAFETERIA AND STUDENT PLAZA FROM ROBERT GRANT AVENUE*







**BUILDING MASSING: VIEW 7**

*VIEW OF GYMNASIUM*

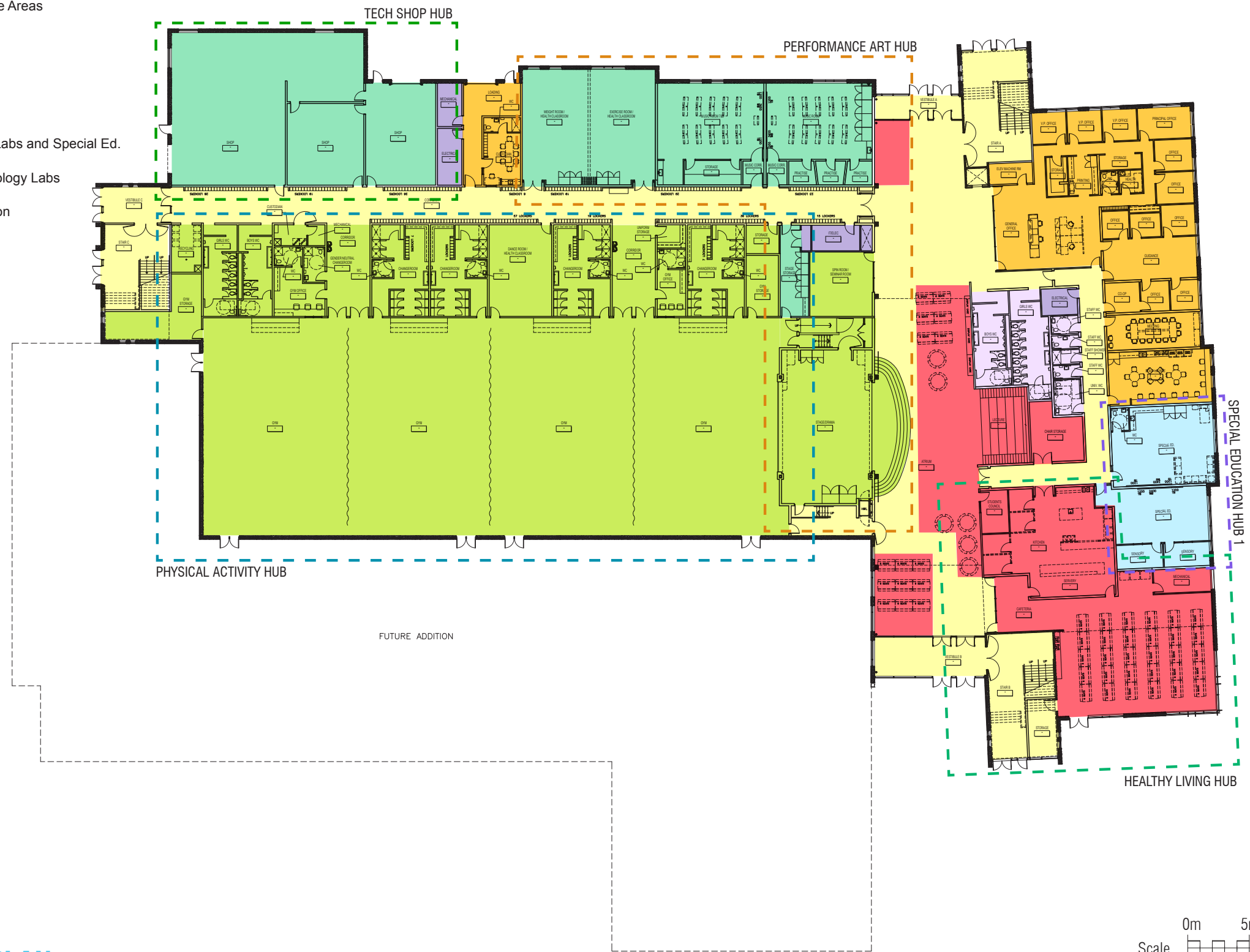
**NEW STITTSVILLE HIGH SCHOOL**

SCHEMATIC DESIGN SUBMISSION

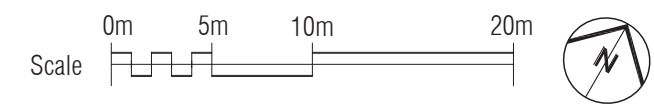




- Gathering and Multi-Use Spaces
- Staff and Administrative Areas
- Circulation
- Washrooms
- Mechanical/Electrical
- Classrooms, Science Labs and Special Ed.
- Music, Arts and Technology Labs
- Exercise and Recreation

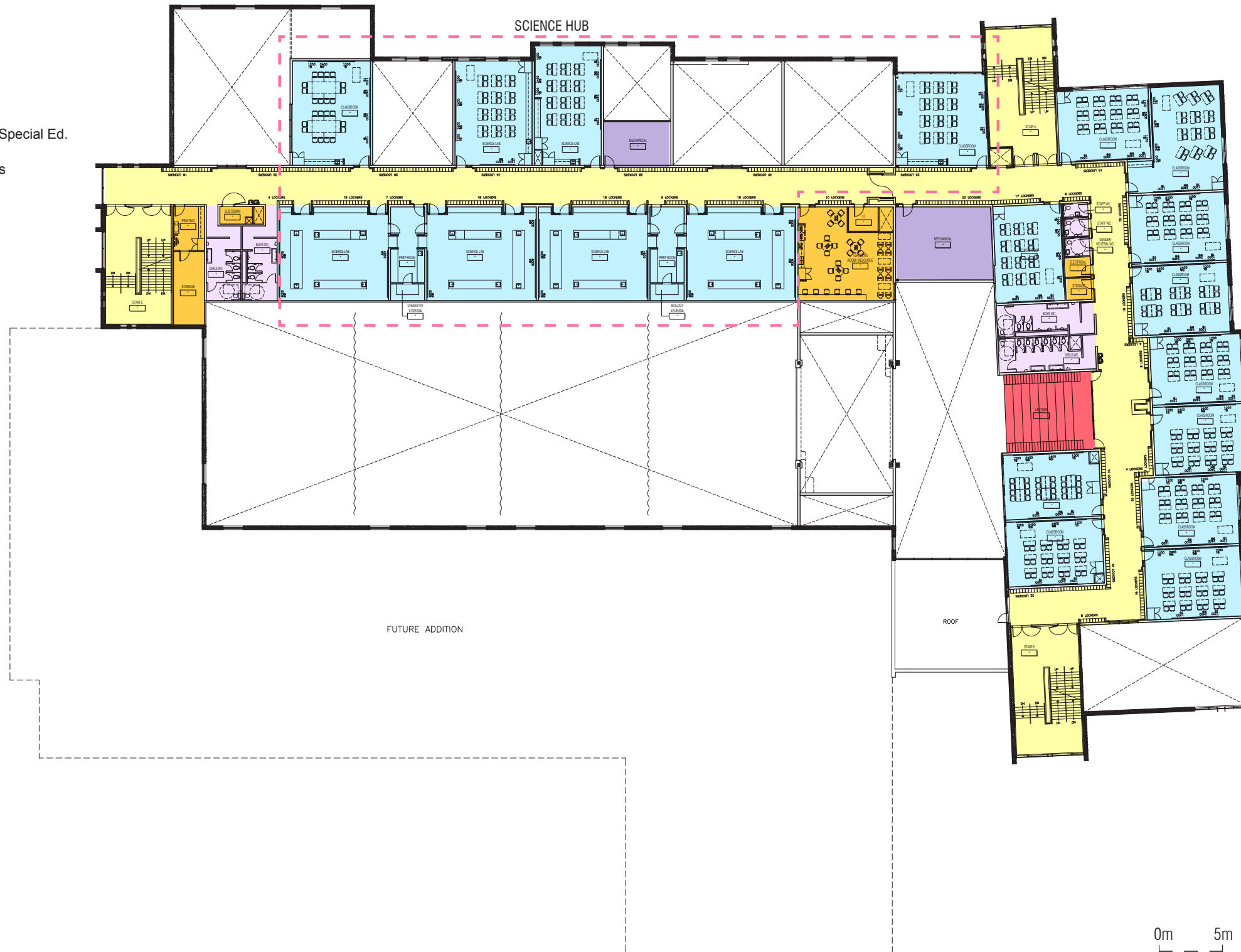


## FIRST FLOOR PLAN

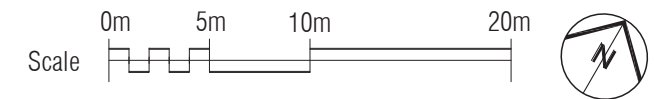




- Gathering and Multi-Use Spaces
- Staff and Administrative Areas
- Circulation
- Washrooms
- Mechanical/Electrical
- Classrooms, Science Labs and Special Ed.
- Music, Arts and Technology Labs
- Exercise and Recreation

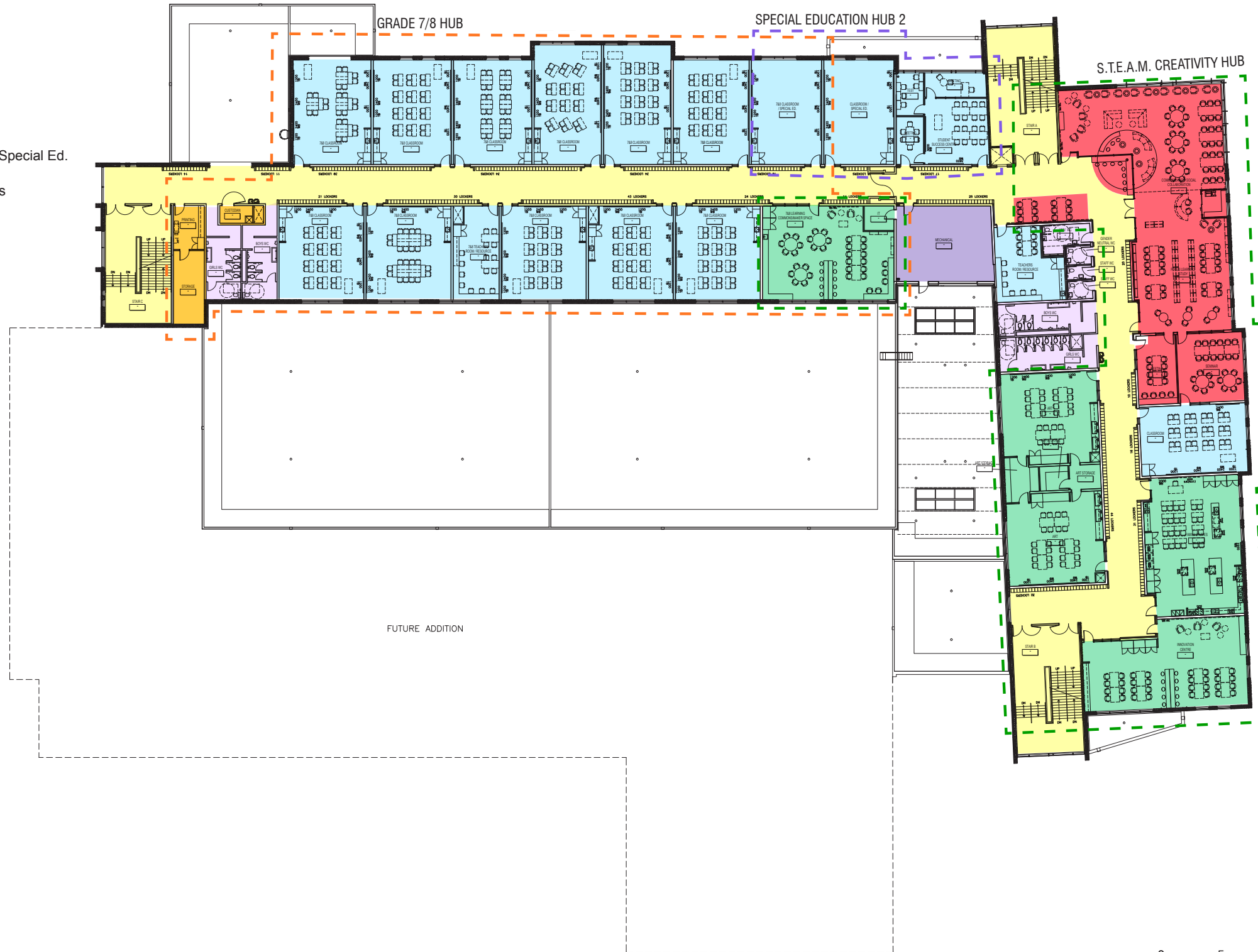


**SECOND FLOOR PLAN**

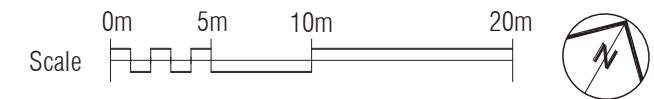




- Gathering and Multi-Use Spaces
- Staff and Administrative Areas
- Circulation
- Washrooms
- Mechanical/Electrical
- Classrooms, Science Labs and Special Ed.
- Music, Arts and Technology Labs
- Exercise and Recreation

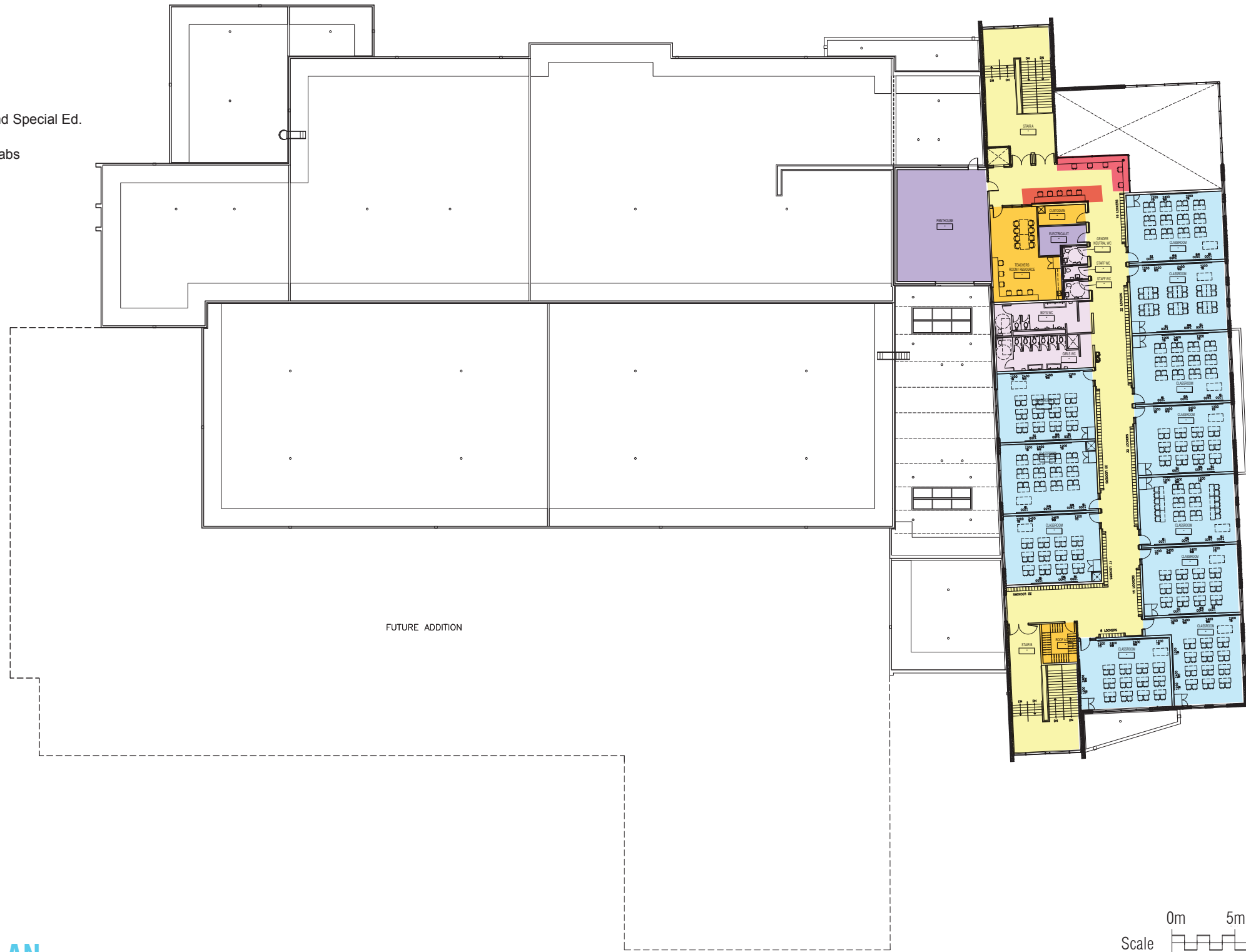


### THIRD FLOOR PLAN

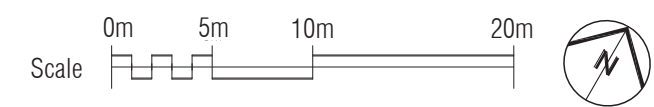




- Gathering and Multi-Use Spaces
- Staff and Administrative Areas
- Circulation
- Washrooms
- Mechanical/Electrical
- Classrooms, Science Labs and Special Ed.
- Music, Arts and Technology Labs
- Exercise and Recreation



### FOURTH FLOOR PLAN





## NEW STITTSVILLE SECONDARY SCHOOL STUDY Revised TIMELINE

Activity	Date
<p><b>Notice of Intention to Commence Study and Approve Study</b></p> <ul style="list-style-type: none"> <li>➤ Board Approval of Study Consultation Plan and Timeline</li> </ul>	<p>22 October 2019</p>
<p><b>Consultative Stage</b></p> <ul style="list-style-type: none"> <li>➤ Formation of Working Group</li> <li>➤ Working Group Meetings</li> <li>➤ Public Consultation Meeting</li> </ul>	<p>November 2019</p> <p>27 November 2019 27 January 2020 February 2020 March 2020</p> <p>April 2020</p>
<p><b>Recommendation and Decision Making Stage</b></p> <ul style="list-style-type: none"> <li>➤ Regular Committee of the Whole Meeting – Presentation of Staff Recommendation Report</li> <li>➤ Regular Board Meeting – Final Decisions</li> </ul>	<p>June 2020</p> <p>June 2020</p>
<p><b>Communication and Implementation Stage</b></p> <ul style="list-style-type: none"> <li>➤ Communication of Board Approved Decision</li> <li>➤ Implementation of Board Approved Decision</li> </ul>	<p>June 2020</p> <p>September 2022</p>