

John Young Elementary School Interim Accommodation Measures

Effective September 2020



Public Meeting Information Package

20 January 2020

7:00 to 9:00 pm

Gymnasium
Westwind Public School
111 Hartsmere Drive, Stittsville



Table of Contents

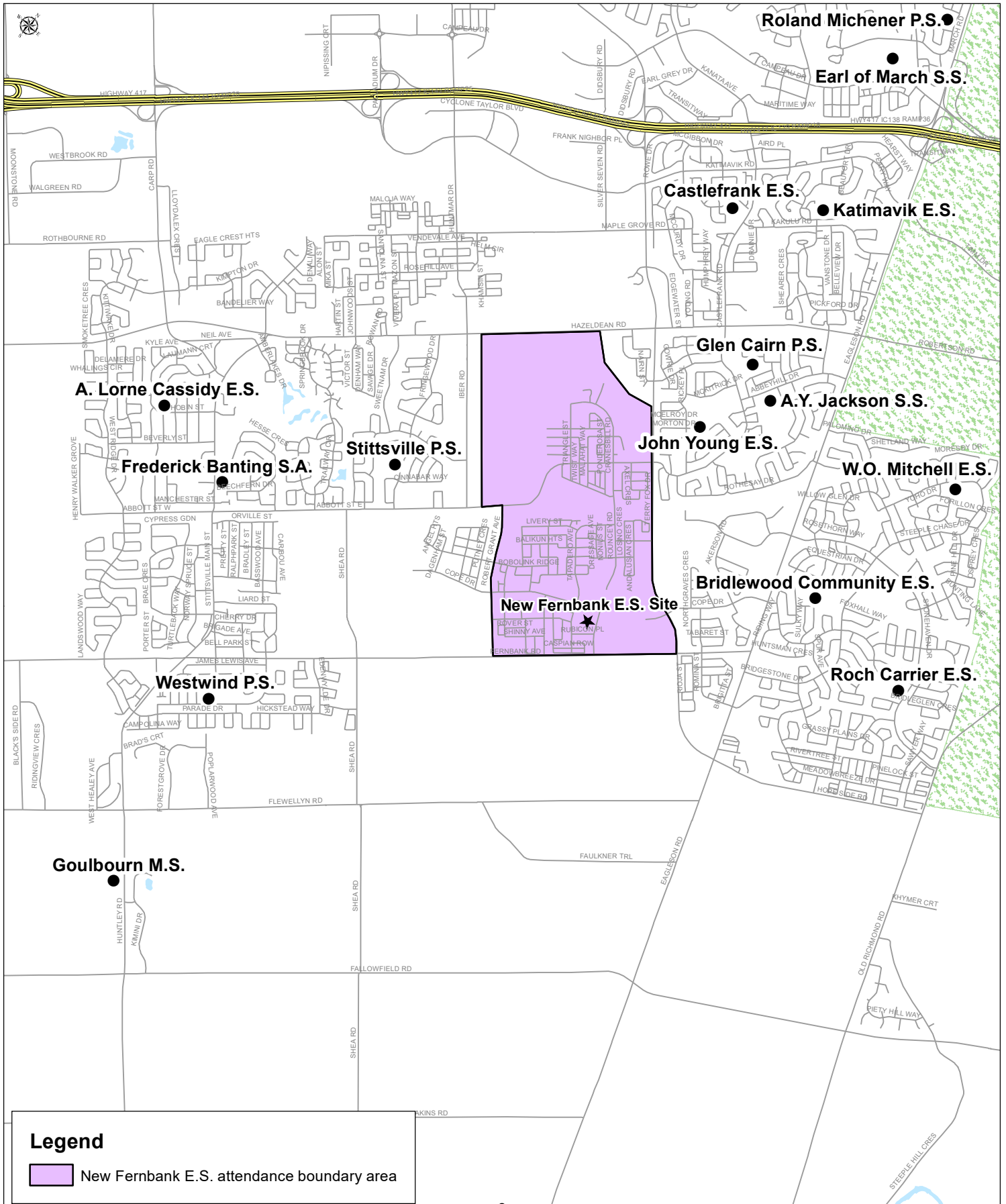
	Page
1. Timeline	1
2. General Location Map	2
3. Overview	3-4
4. Advisory Committee / Staff Comments	5-7
5. Interim Option Under Consideration	8-12
6. Other Options Considered	13
7. Background Information	14-19
8. Comment Sheet	20

John Young Elementary School – Interim Accommodation Measures TIMELINE

Activity	Date
<p>Notice of Intention to Commence Study and Approve Study</p> <ul style="list-style-type: none"> ➤ Committee of the Whole Meeting ➤ Board Approval of Study Consultation Plan and Timeline 	<p>5 November 2019</p> <p>26 November 2019</p>
<p>Consultative Stage</p> <ul style="list-style-type: none"> ➤ Information Meeting #1 with Affected Principals and School Council Representatives (<i>Library at JYES 7:00 – 9:00 pm</i>) ➤ Public Consultation Meeting 	<p>5 December 2019</p> <p>20 January 2020</p>
<p>Recommendation and Decision Making Stage</p> <ul style="list-style-type: none"> ➤ Regular Committee of the Whole Meeting – Presentation of Staff Recommendation Report ➤ Regular Board Meeting – Final Decisions 	<p>18 February 2020</p> <p>25 February 2020</p>
<p>Communication and Implementation Stage</p> <ul style="list-style-type: none"> ➤ Communication of Board Approved Decision ➤ Implementation of Board Approved Decision 	<p>February 2020</p> <p>September 2020</p>



General Location Map



John Young Elementary School

Interim Accommodation Measures

Overview

This study has been initiated in order to alleviate enrolment pressures at John Young Elementary School in advance of the opening of the New Fernbank Elementary School.

As of 31 October 2019, the enrolment at John Young Elementary School was 849 in a school which has a capacity of 547 (a utilization rate of 155%). The school is currently operating with 16 portables on site.

The school is experiencing significant accommodation pressures primarily due to residential growth occurring in the Fernbank development area, resulting in an immediate need to alleviate pressures for the September 2020 school year.

Board, at its meeting of 26 November 2019, approved a consultation process to address these enrolment pressures in the interim. The first meeting of the Advisory Committee was held on Thursday December 5, 2019. The consultation process included an Advisory Committee from the following schools:

- **John Young Elementary School**
- **Westwind Public School**

Local Community Associations were also invited to attend the meeting. The Advisory Committee's role was to provide localized input and advice to planning staff with regard to the preparation and evaluation of an interim option and parental and family preferences as they relate to student movement.

As detailed in the staff report, a proposed plan has been outlined to consider the temporary redirection of Year 1 Kindergarten, Year 2 Kindergarten, and Grade 1 John Young ES students residing in the approved attendance boundary area for the New Fernbank ES to Westwind PS. The redirection would be implemented for the September 2020 school year. Students re-directed to Westwind PS will subsequently move to the New Fernbank ES upon its opening.

The OCDSB has completed a study for the New Fernbank ES. As of 24 June 2019, the Board approved the opening grade structure, program and attendance boundary. The OCDSB submitted its request for capital to build the New Fernbank ES on 27 September 2019. It remains uncertain how or when the Ministry will release its decisions for funding awards, but staff does not anticipate that the decisions will be announced prior to February 2020.

Note that if a positive decision regarding funding for the New Fernbank ES is made, and if that decision were to be announced by February 2020, the OCDSB would be able to have

the school construction commence in the summer of 2020 and an opening of September 2021 would be achievable.

If the funding decision is later than February 2020, the start of construction could be delayed beyond the summer of 2020 and a September 2021 opening would not be feasible. In this scenario, the opening of the new school would likely be in September 2022.

Outlined on the following pages are the impacts of the proposed redirection of Fernbank-area students commencing in September 2020.

Next Steps

The purpose of the Public Consultation Meeting is to receive input from affected school communities and members of the public with regard to the interim accommodation measure which is being put forth for consideration. Parents and community members are encouraged to provide input this evening, however, feedback is appreciated and valued throughout the entire consultative process.

Once input from the community is reviewed, planning staff will prepare a recommendation report scheduled to go to the Board's Committee of the Whole on 18 February 2020. That meeting will include an opportunity for delegations from the public and Trustee debate regarding staff's recommendations.

A final decision by the Board regarding the study is also currently scheduled to take place in on 25 February 2020.

Public comments and/or questions regarding the study may be sent in to the following:

Email: **johnyounges.study@ocdsb.ca**

Fax: 613-820-6968

Mail: **John Young ES Study**
Planning Department
133 Greenbank Road
Ottawa ON
K2H 6L3

Advisory Committee Comments

A meeting of the Advisory Committee was held on 5 December 2019. Among the discussion points/concerns raised at the meeting in regard to the interim accommodation measure, were the following:

- Could new students moving into the Fernbank-area who have not begun their schooling at John Young ES be directed to Westwind PS instead?
- The issue of siblings who would be split between the two schools was raised. It was asked if flexibility could be provided to the impacted students by allow siblings to stay together. For example, could older siblings be permitted to move to Westwind PS with their younger sibling(s), or could siblings be permitted to remain at John Young ES?
- If impacted students are moving to Westwind PS and they have a Grade 6 sibling, could they both be permitted remain at John Young ES, so that the older sibling may complete their final year at John Young ES?

Staff Comment on Discussion Points

1. There was general consensus that any new students moving into the Fernbank-area who have not attended John Young ES in the 2019-2020 school year be directed to Westwind PS. This would help to provide some relief to John Young ES' accommodation pressures given the available instructional space at Westwind PS.

There was also consensus that any Year 1 Kindergarten to Grade 1 student impacted with a sibling who will be in Grade 6 in September 2020 should be permitted to remain at John Young ES. This would allow the older student to complete their final grade at the school and those siblings would not be separated.

2. Staff also reviewed comments raised regarding impacted Year 1 Kindergarten to Grade 1 students at John Young ES with older siblings in all grades.

Staff prepared projected enrolments for both John Young ES and Westwind PS under two scenarios: Impacted students and their older siblings attending Westwind PS; or impacted students and their older siblings attending John Young ES.

Although providing relief to John Young ES, re-directing all Year 1 Kindergarten to Grade 1 Fernbank-area students and their older siblings to Westwind PS resulted in projected enrolment increases at the school that would nearly maximize the total number of portables that can be placed on site. The projected enrolment in September 2020 at Westwind PS under this scenario was 717 students and resulted in a need for 6 portables. Should a second year of interim measures be required, the enrolment would increase to 857 and 11 portables would be required. Staff felt these projected numbers for Westind PS were far greater than anticipated and did not observe this as an ideal interim accommodation measure (See Page 7).

It was analyzed as to whether or not having siblings remain together at John Young ES would provide enough enrolment relief to the school. The projection resulted in an enrolment of 809 in September 2020 and a portable utilization of 13. The projection for the following school year remained stable at 808.

The projected number of students re-directed to Westwind PS was manageable in the temporary timeframe, and resulted in the need for three to seven portables. Staff determined that this interim accommodation measure appeared to be more feasible, and have provided a more detailed outline for consideration (See Page 8).

3. Under this interim accommodation measure, there are likely a number of families with personal circumstances where they would like the Board to consider providing a level of additional flexibility to remain at John Young ES, or transfer to Westwind PS. Families can utilize the provisions of the Student Transfer Policy in these cases where exceptional personal circumstances may warrant the approval of the request. However, as staff continue to receive feedback on the issue, a better idea of the need for any sibling considerations will be better understood.
4. Enrolment at John Young ES is no longer sustainable and the portable capacity of the school and site are approaching threshold levels. Under the interim accommodation measure, these enrolment pressures would be alleviated and the need for additional portables on site would be eliminated. In turn, enrolment at Westwind PS will increase in the interim with seven portables required by September 2021, a sustainable amount for the school site.

Ultimately, and subject to provincial funding, it is anticipated that the construction of the new Kindergarten to Grade 6 Fernbank Elementary School will provide the Board with the opportunity to substantially alleviate overcrowding at John Young ES.

**Alternate Interim Accommodation Measure Considered - Yr 1, Yr 2, Grade 1 and
Siblings Directed to Westwind PS**

School: **John Young Elementary School**

Capacity: **547**

Year	Program	Year 1	Year 2	1	2	3	4	5	6	SE	TOTAL	Portables	UF %
Projection 2020	KGTN	70	71								141	10	137.1%
	ENG			23	45	50	61	60	52		291		
	EFI			53	78	59	49	40	39		318		
	TOTAL	70	71	76	123	109	110	100	91	0	750		
Projection 2021	KGTN	70	72								142	9	133.1%
	ENG			22	31	54	53	67	58		285		
	EFI			49	47	71	51	45	38		301		
	TOTAL	70	72	71	78	125	104	112	96	0	728		

School: **Westwind Public School**

Capacity: **628**

Year	Program	Year 1	Year 2	1	2	3	4	5	6	SE	TOTAL	Portables	UF %
Projection 2020	KGTN	100	104								204	6	114.2%
	ENG			31	10	23	28	19	33		144		
	EFI			84	57	58	64	57	49		369		
	TOTAL	100	104	115	67	81	92	76	82	0	717		
Projection 2021	KGTN	115	123								238	11	136.5%
	ENG			30	48	16	31	38	26		189		
	EFI			90	89	61	64	68	58		430		
	TOTAL	115	123	120	137	77	95	106	84	0	857		

Note

Yr1, Yr2, and Grade 1 students without a sibling(s) in Grade 2 and above redirected to Westwind PS.

Yr1, Yr2, and Grade 1 students with a sibling(s) in Grades 2 and above redirected to Westwind PS.

Students not previously at John Young ES and residing in Fernbank-area attend Westwind PS as of September 2020.

SE = Congregated Special Education Classes

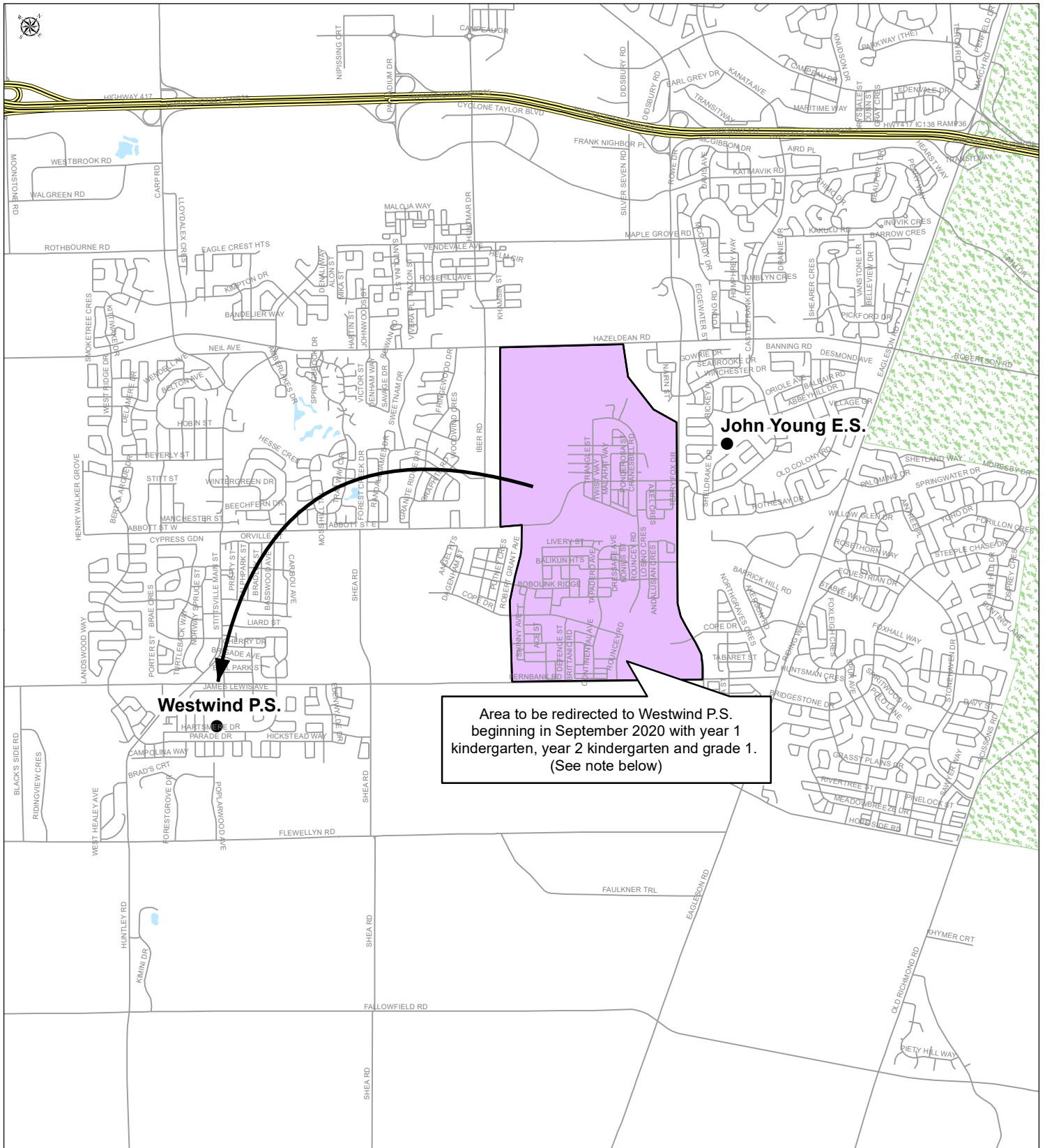
UF % = Enrolment divided by Capacity

Interim Accommodation Measure Under Consideration

- Year 1 Kindergarten, Year 2 Kindergarten, and Grade 1 students from the Fernbank-area be re-directed to Westwind PS effective September 2020.
- As of September 2020, any impacted students with an older sibling (Grades 2-6) at John Young ES be permitted to remain at the school.
- New students moving into the Fernbank-area be directed to Westwind PS.



Proposed John Young E.S. Interim Attendance Boundary Redirection



Note: The interim attendance boundary redirection of New Fernbank E.S. area students (currently attending John Young E.S.) would commence with year 1 kindergarten, year 2 kindergarten and grade 1 in September 2020. If New Fernbank E.S. is not open for September 2021, year 1 kindergarten, year 2 kindergarten, grade 1 and grade 2 would be redirected that year.

Historical and Status Quo Projected Enrolments

School:

John Young Elementary School

Capacity: 547

Year	Program	Year 1	Year 2	1	2	3	4	5	6	SE	TOTAL	Portables	UF %
Actual Enrolment 2015	KGTN	96									96	10	117.7%
	ENG		17	23	26	26	20	24	26	7	169		
	EFI		70	69	53	40	27	22	37		318		
	G. ENG			5	11	8	13	13	11		61		
	TOTAL	96	87	97	90	74	60	59	74	7	644		
Actual Enrolment 2016	KGTN	99	87								186	10	119.7%
	ENG			20	25	32	29	25	27	7	165		
	EFI			63	60	48	35	25	21		252		
	G. ENG			1	7	13	7	13	11		52		
	TOTAL	99	87	84	92	93	71	63	59	7	655		
Actual Enrolment 2017	KGTN	102	99								201	12	128.5%
	ENG			21	29	36	33	32	32	7	190		
	EFI			65	54	52	42	33	20		266		
	G. ENG				3	8	13	8	14		46		
	TOTAL	102	99	86	86	96	88	73	66	7	703		
Actual Enrolment 2018	KGTN	107	103								210	11	134.4%
	ENG			27	33	34	35	41	33	5	208		
	EFI			76	65	52	47	45	32		317		
	TOTAL	107	103	103	98	86	82	86	65	5	735		
	Actual Enrolment 2019	KGTN	105	126									
ENG				38	42	60	50	52	41		283		
EFI				81	71	54	45	41	43		335		
TOTAL		105	126	119	113	114	95	93	84	0	849		
Year		Program	Year 1	Year 2	1	2	3	4	5	6	SE	TOTAL	Portables
Status Quo Projection 2020	KGTN	120	122								242	18	174.8%
	ENG			49	49	57	66	66	54		341		
	EFI			88	82	67	53	43	40		373		
	TOTAL	120	122	137	131	124	119	109	94	0	956		
Status Quo Projection 2021	KGTN	132	139								271	23	196.0%
	ENG			46	69	62	66	81	69		393		
	EFI			84	87	79	62	53	43		408		
	TOTAL	132	139	130	156	141	128	134	112	0	1072		

Note

SE = Congregated Special Education Classes

UF % = Enrolment divided by Capacity

Historical and Status Quo Projected Enrolments

School:

Westwind Public School

Capacity: 628

Year	Program	Year 1	Year 2	1	2	3	4	5	6	SE	TOTAL	Portables	UF %
Actual Enrolment 2015	KGTN	64									64	2	99.8%
	ENG		5	17	25	32	29	15	31		154		
	EFI		60	60	65	69	55	48	52		409		
	TOTAL	64	65	77	90	101	84	63	83	0	627		

Actual Enrolment 2016	KGTN	48	69								117	0	91.9%
	ENG			4	18	23	34	31	13		123		
	EFI			55	58	66	61	51	46		337		
	TOTAL	48	69	59	76	89	95	82	59	0	577		

Actual Enrolment 2017	KGTN	47	52								99	0	89.5%
	ENG			11	7	28	21	33	33		133		
	EFI			54	52	48	64	60	52		330		
	TOTAL	47	52	65	59	76	85	93	85	0	562		

Actual Enrolment 2018	KGTN	41	47								88	0	85.2%
	ENG			6	19	11	27	21	36		120		
	EFI			50	54	51	50	64	58		327		
	TOTAL	41	47	56	73	62	77	85	94	0	535		

Actual Enrolment 2019	KGTN	47	46								93	0	83.0%
	ENG			3	12	21	13	28	24		101		
	EFI			53	50	57	55	49	63		327		
	TOTAL	47	46	56	62	78	68	77	87	0	521		

Year	Program	Year 1	Year 2	1	2	3	4	5	6	SE	TOTAL	Portables	UF %
Status Quo Projection 2020	KGTN	50	53								103	0	81.4%
	ENG			5	6	16	23	13	31		94		
	EFI			49	53	50	60	54	48		314		
	TOTAL	50	53	54	59	66	83	67	79	0	511		

Status Quo Projection 2021	KGTN	53	56								109	0	81.7%
	ENG			6	10	8	18	24	15		81		
	EFI			55	49	53	53	60	53		323		
	TOTAL	53	56	61	59	61	71	84	68	0	513		

Note

SE = Congregated Special Education Classes

UF % = Enrolment divided by Capacity

**Interim Accomodation Scenario Under Consideration - Yr 1, Yr 2, Grade 1
Siblings Remain at John Young ES**

School: **John Young Elementary School** Capacity: **547**

Year	Program	Year 1	Year 2	1	2	3	4	5	6	SE	TOTAL	Portables	UF %
Projection 2020	KGTN	87	81								168	13	147.9%
	ENG			25	48	54	63	61	52		303		
	EFI			61	80	65	51	42	39		338		
	TOTAL	87	81	86	128	119	114	103	91	0	809		
Projection 2021	KGTN	91	89								180	12	147.7%
	ENG			24	34	56	57	69	59		299		
	EFI			57	55	73	57	47	40		329		
	TOTAL	91	89	81	89	129	114	116	99	0	808		

School: **Westwind Public School** Capacity: **628**

Year	Program	Year 1	Year 2	1	2	3	4	5	6	SE	TOTAL	Portables	UF %
Projection 2020	KGTN	83	94								177	3	104.8%
	ENG			29	7	19	26	18	33		132		
	EFI			76	55	52	62	55	49		349		
	TOTAL	83	94	105	62	71	88	73	82	0	658		
Projection 2021	KGTN	94	106								200	7	123.7%
	ENG			28	45	14	27	36	25		175		
	EFI			82	81	59	58	66	56		402		
	TOTAL	94	106	110	126	73	85	102	81	0	777		

Note

Yr1, Yr2, and Grade 1 students without a sibling(s) in Grade 2 and above redirected to Westwind PS.
 Yr1, Yr2, and Grade 1 students with a sibling(s) in Grades 2 and above remain at John Young ES.
 Students not previously at John Young ES and residing in Fernbank-area attend Westwind PS as of September 2020.
 SE = Congregated Special Education Classes
 UF % = Enrolment divided by Capacity

Other Options Considered

1. Re-Directing John Young ES Grade 6 Students

Staff considered redirecting all Grade 6 John Young ES students to Glen Cairn Public School (PS), a Grade 7 and 8 school. John Young ES students are directed to Glen Cairn PS after completing Grade 6. This would follow a natural feeding progression one year earlier than normal.

The cohort of Grade 6 students for the September 2020 school year is projected to be 94 students. This would not result in enough enrolment pressure being alleviated from John Young ES. The option would separate some siblings, and not allow students to complete their final grade at a school they have been established at for several years.

Given the above, the option was discounted as a possible interim option.

2. Re-Directing All Fernbank Area Students

Staff considered a block move of all Fernbank area students (Year 1 Kindergarten to Grade 5) to another location, while Grade 6 students would remain at John Young ES to complete their final year prior to transitioning to Glen Cairn PS for Grade 7.

There are former OCDSB sites that are vacant within the District. These sites however, are not within close geographical range to John Young ES, nor do they have adequate available instructional space to accommodate the number of students that would be block moved for September 2020.

Given the above, staff determined that this option would not be feasible in the interim.

Additional Information

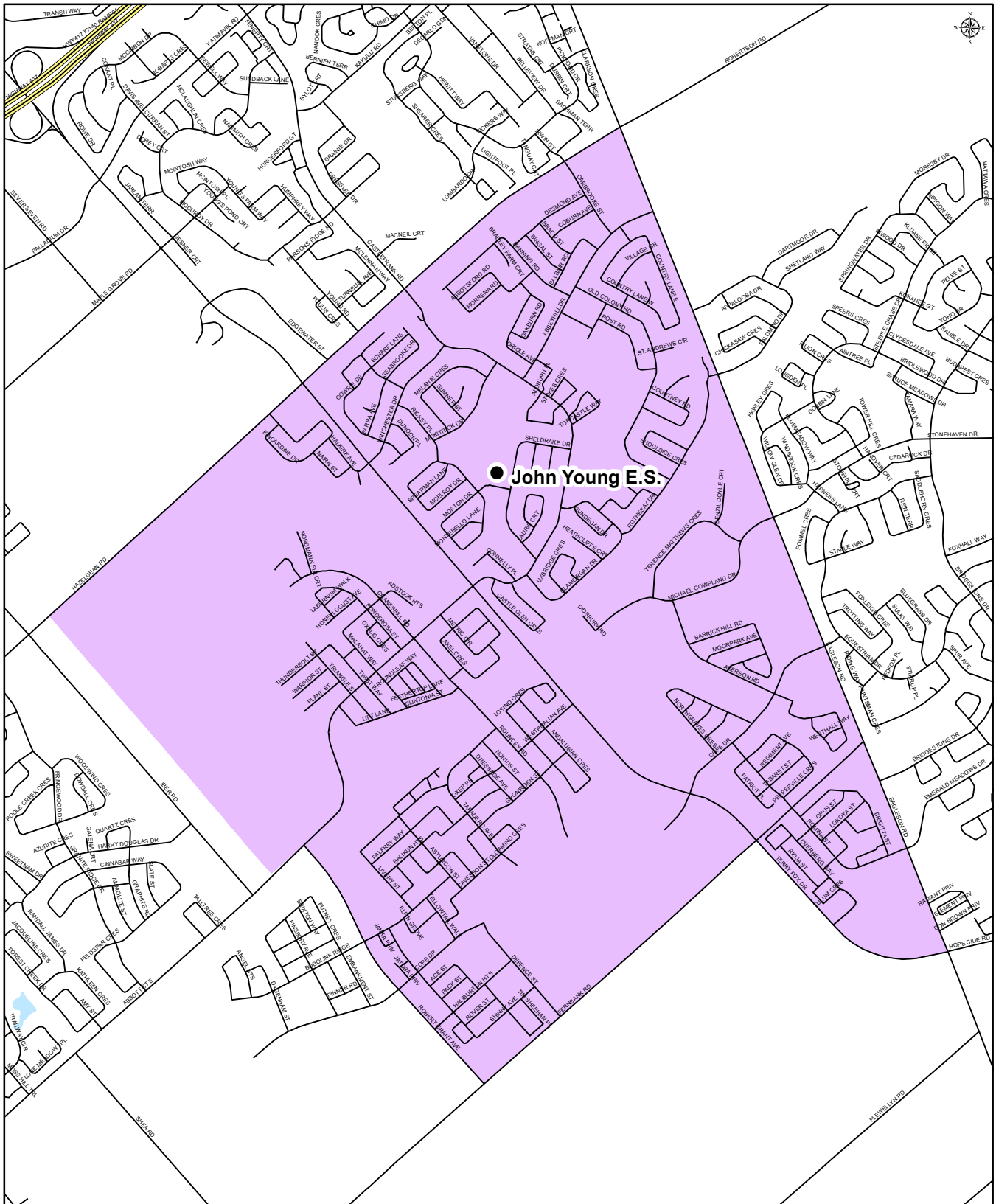
- **Boundary Maps**
- **Historical Enrolments**





JOHN YOUNG ELEMENTARY SCHOOL
 Junior Kindergarten to Grade 6

English Program with Core French and Early French Immersion Attendance Boundary



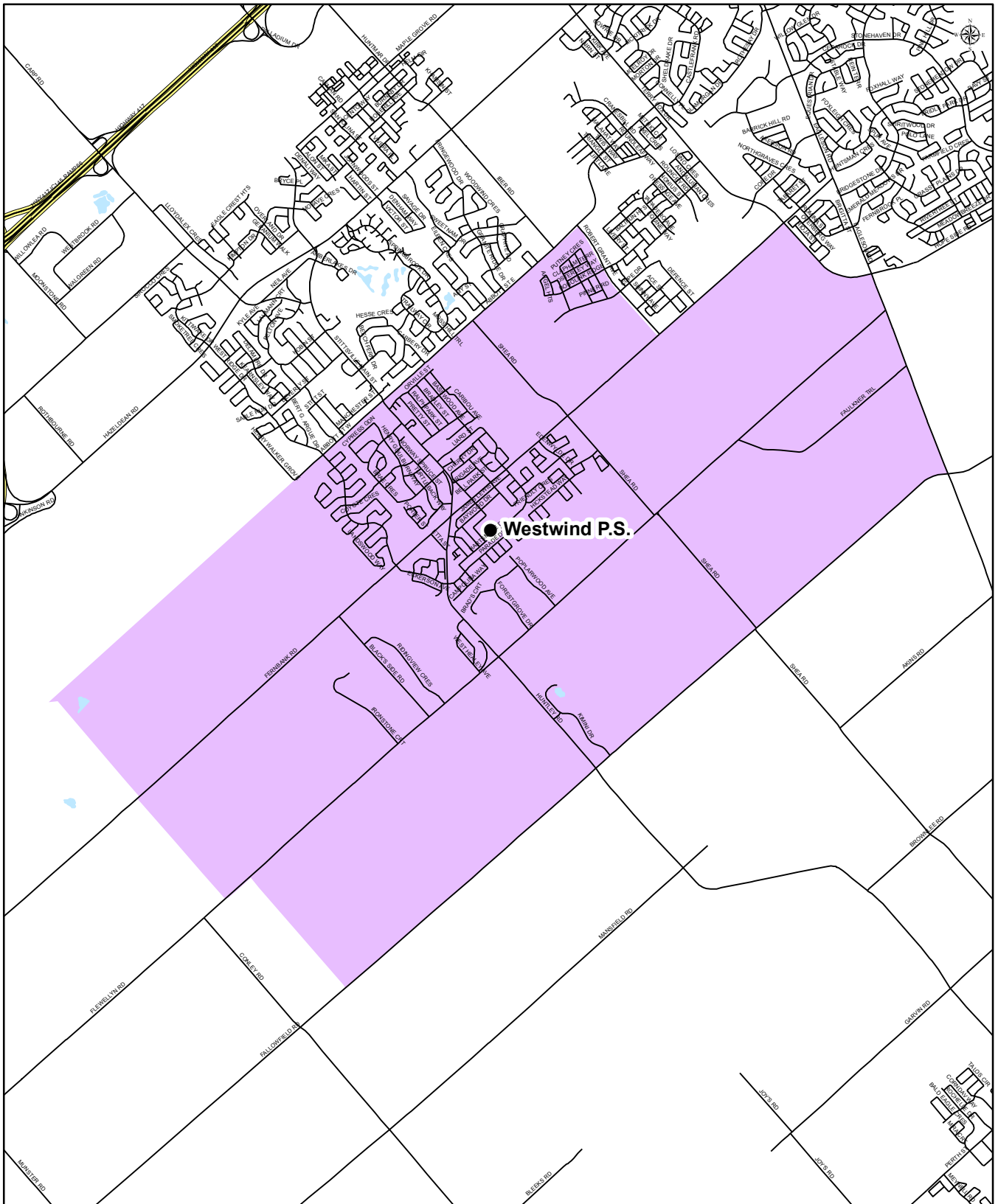
John Young Elementary School
 5 Morton Drive
 Kanata, Ontario
 K2L 1W7
 (613) 836-5987

Map is for illustrative purposes only.
 For further information, visit www.ocdsb.ca
 September 2019



OTTAWA-CARLETON
DISTRICT SCHOOL BOARD

WESTWIND PUBLIC SCHOOL
Junior Kindergarten to Grade 6
English Program with Core French Attendance Boundary



Westwind Public School
111 Hartsmere Drive
Stittsville, Ontario
K2S 2G1
(613) 831-7840

Map is for illustrative purposes only.
For further information, visit www.ocdsb.ca
September 2019

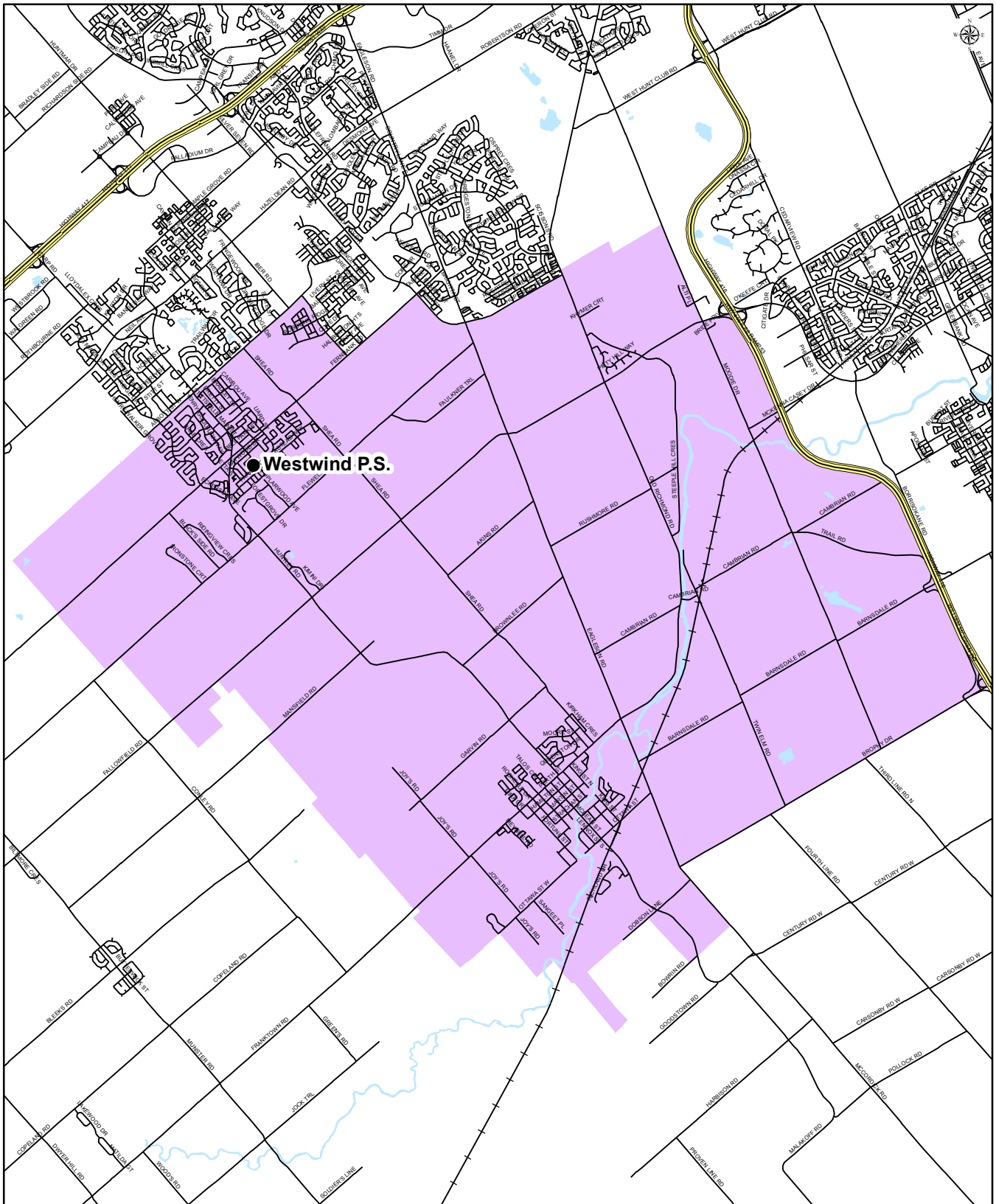


OTTAWA-CARLETON
DISTRICT SCHOOL BOARD

WESTWIND PUBLIC SCHOOL

Junior Kindergarten to Grade 6

Early French Immersion Attendance Boundary



Westwind Public School
111 Hartsmere Drive
Stittsville, Ontario
K2S 2G1
(613) 831-7840

Map is for illustrative purposes only.
For further information, visit www.ocdsb.ca
September 2019

SCHOOL: JOHN YOUNG ES

Historical Enrolment - ALL PROGRAMS

Year	Yr 1	Yr 2	1	2	3	4	5	6	7	8	Spec	Yr 1/Yr 2 Total	1-6 Total	TOTAL
2010	38	35	68	44	59	53	40	40			8	73	304	385
2011	43	33	46	70	51	54	51	43			8	76	315	399
2012	44	52	42	50	75	53	64	49			8	96	333	437
2013	81	78	63	58	65	72	68	68			8	159	394	561
2014	82	91	83	64	54	57	68	68			7	173	394	574
2015	96	87	97	90	74	60	59	74			7	183	454	644
2016	99	87	84	92	93	71	63	59			7	186	462	655
2017	102	99	86	86	96	88	73	66			7	201	495	703
2018	107	103	103	98	86	82	86	65			5	210	520	735
2019	105	126	119	113	114	95	93	84			0	231	618	849

Historical Enrolment - KINDERGARTEN

Year	Yr 1	Yr 2	1	2	3	4	5	6	7	8	Spec	Yr 1/Yr 2 Total	1-6 Total	TOTAL
2016	99	87										186		186
2017	102	99										201		201
2018	107	103										210		210
2019	105	126										231		231

Historical Enrolment - ENGLISH

Year	Yr 1	Yr 2	1	2	3	4	5	6	7	8	Spec	Yr 1/Yr 2 Total	1-6 Total	TOTAL
2010	38	8	15	9	24	18	15	13			8	46	94	148
2011	43	6	12	19	15	25	13	17			8	49	101	158
2012	44	9	9	16	25	17	29	13			8	53	109	170
2013	81	19	21	19	29	25	30	30			8	100	154	262
2014	82	20	18	22	21	23	21	33			7	102	138	247
2015	96	17	23	26	26	20	24	26			7	113	145	265
2016			20	25	32	29	25	27			7		158	165
2017			21	29	36	33	32	32			7		183	190
2018			27	33	34	35	41	33			5		203	208
2019			38	42	60	50	52	41			0		283	283

Historical Enrolment - EARLY FRENCH IMMERSION

Year	Yr 1	Yr 2	1	2	3	4	5	6	7	8	Spec	Yr 1/Yr 2 Total	1-6 Total	TOTAL
2010		27	48	27	23	24	13	15				27	150	177
2011		27	27	41	25	21	25	14				27	153	180
2012		43	27	24	38	25	23	23				43	160	203
2013		59	41	29	24	37	25	26				59	182	241
2014		71	58	39	23	22	35	23				71	200	271
2015		70	69	53	40	27	22	37				70	248	318
2016			63	60	48	35	25	21					252	252
2017			65	54	52	42	33	20					266	266
2018			76	65	52	47	45	32					317	317
2019			81	71	54	45	41	43					335	335

Historical Enrolment - GIFTED ENGLISH

Year	Yr 1	Yr 2	1	2	3	4	5	6	7	8	Spec	Yr 1/Yr 2 Total	1-6 Total	TOTAL
2010			5	8	12	11	12	12					60	60
2011			7	10	11	8	13	12					61	61
2012			6	10	12	11	12	13					64	64
2013			1	10	12	10	13	12					58	58
2014			7	3	10	12	12	12					56	56
2015			5	11	8	13	13	11					61	61
2016			1	7	13	7	13	11					52	52
2017				3	8	13	8	14					46	46
2018														
2019														

Notes:

Yr 1 = Year 1 Kindergarten; Yr 2 = Year 2 Kindergarten; Spec = Special Education

2019 enrolment is preliminary 31 October.

SCHOOL: Westwind PS

Historical Enrolment - ALL PROGRAMS

Year	Yr 1	Yr 2	1	2	3	4	5	6	7	8	Spec	Yr 1/Yr 2 Total	1-6 Total	TOTAL
2010														
2011	89	71	66	80	71	71	54					160	342	502
2012	98	109	82	71	87	74	75	58				207	447	654
2013	84	93	113	86	67	83	72	73				177	494	671
2014	56	81	89	107	83	63	87	72				137	501	638
2015	64	65	77	90	101	84	63	83				129	498	627
2016	48	69	59	76	89	95	82	59				117	460	577
2017	47	52	65	59	76	85	93	85				99	463	562
2018	41	47	56	73	62	77	85	94				88	447	535
2019	47	46	56	62	78	68	77	87				93	428	521

Historical Enrolment - KINDERGARTEN

Year	Yr 1	Yr 2	1	2	3	4	5	6	7	8	Spec	Yr 1/Yr 2 Total	1-6 Total	TOTAL
2016	48	69										117		117
2017	47	52										99		99
2018	41	47										88		88
2019	47	46										93		93

Historical Enrolment - ENGLISH

Year	Yr 1	Yr 2	1	2	3	4	5	6	7	8	Spec	Yr 1/Yr 2 Total	1-6 Total	TOTAL
2010														
2011	89	7	18	26	26	14	26					96	110	206
2012	98	25	12	19	31	28	16	30				123	136	259
2013	84	16	36	19	18	29	25	17				100	144	244
2014	56	13	17	34	22	16	32	24				69	145	214
2015	64	5	17	25	32	29	15	31				69	149	218
2016			4	18	23	34	31	13					123	123
2017			11	7	28	21	33	33					133	133
2018			6	19	11	27	21	36					120	120
2019			3	12	21	13	28	24					101	101

Historical Enrolment - EARLY FRENCH IMMERSION

Year	Yr 1	Yr 2	1	2	3	4	5	6	7	8	Spec	Yr 1/Yr 2 Total	1-6 Total	TOTAL
2010														
2011		64	48	54	45	57	28					64	232	296
2012		84	70	52	56	46	59	28				84	311	395
2013		77	77	67	49	54	47	56				77	350	427
2014		68	72	73	61	47	55	48				68	356	424
2015		60	60	65	69	55	48	52				60	349	409
2016			55	58	66	61	51	46					337	337
2017			54	52	48	64	60	52					330	330
2018			50	54	51	50	64	58					327	327
2019			53	50	57	55	49	63					327	327

Notes:

Yr 1 = Year 1 Kindergarten; Yr 2 = Year 2 Kindergarten; Spec = Special Education

2011: September 2011 school opens as JK-5.

2019 enrolment is preliminary 31 October.



OTTAWA-CARLETON
DISTRICT SCHOOL BOARD

COMMENT SHEET

John Young Elementary School – Interim Accommodation Measures

20 January 2020

Name	
Affiliation (School/Other)	Email address *

Email: johnyounges.study@ocdsb.ca
Fax: 613-820-6968
Mail: John Young Elementary School – Interim Accommodation Measures
Planning Department at 133 Greenbank Road, Nepean, Ontario, K2H 6L3

Please be advised that by submitting written comments to the Ottawa-Carleton District School Board you acknowledge and understand that any personal information appearing on your message such as, but not limited to: name, address, email address - as defined by the Municipal Freedom of Information and Protection of Privacy Act - may be disclosed publicly when your comments are circulated in connection with this issue.

* The provision of an email address is optional.