

New Fernbank Elementary School

***Opening Grade Structure, Program and Attendance
Boundary Study***

Public Consultation Meeting

Thursday, May 23rd 2019



Welcome and Introductions



OTTAWA-CARLETON
DISTRICT SCHOOL BOARD



www.ocdsb.ca

Overview of Consultation Meeting

- *Staff Presentation*
- *Public Question & Answer Period*
- *Informal Discussion Period with Staff*



OTTAWA-CARLETON
DISTRICT SCHOOL BOARD



www.ocdsb.ca

Introduction

- This study has been initiated in order to set the attendance boundary, opening grade structure, and program offering for a future new OCDSB elementary school in the Fernbank Development area.
- The need for a new elementary school in the Fernbank development area was first identified as part of the Fernbank Community Design Plan (CDP).
- The opening of a New Fernbank E.S. is currently ranked as the highest project on the Board approved list of capital priorities. Funding for construction of new schools is provided by the Ministry of Education.

Introduction

- The Fernbank development area is expected to contain approximately 11,000 new homes at full build out. By the end of 2018 building permits had been issued for an estimated 2,350 new residential units.
- The majority of Kindergarten to Grade 6 students residing in Fernbank are directed to John Young Elementary School.
- John Young Elementary currently requires the use of 11 portable classrooms and is accommodating 735 students in a facility with a capacity for 547.

Introduction

- Middle French Immersion students residing in the Fernbank Development area are directed to either A. Lorne Cassidy E.S. or Bridlewood Community E.S.
- The portion of the Fernbank Development area west of Robert Grant Avenue is directed to Westwind P.S. for both the English and Early French Immersion Programs.

Study Process

- In January of 2019, the Board approved a study consultation plan and timeline for the setting of an opening grade configuration, program offering, and attendance boundary for a New Fernbank E.S.
- A local working group was subsequently formed and met during the spring to consider potential accommodation options.
- The group was comprised of parent council representatives and Principals from potentially impacted schools, Board staff, and various local community associations.

Study Process

- A proposal for the New Fernbank E.S. attendance boundary, program, and opening grade structure has been prepared for your comment.
- In setting new attendance boundaries, consideration was given to existing program feeding patterns, neighbourhood alignments and connections, and the need to create viable and sustainable program enrolments for schools.

New Fernbank E.S. - Proposal

- Under the proposal, the New Fernbank E.S. would offer a Junior Kindergarten to Grade 6 English and Early French Immersion program.
- The school would open with a JK to Grade 5 grade structure and would progress to JK to Grade 6 for the following school year.
- It is anticipated that students at the new elementary school would feed to the New Stittsville Secondary School.

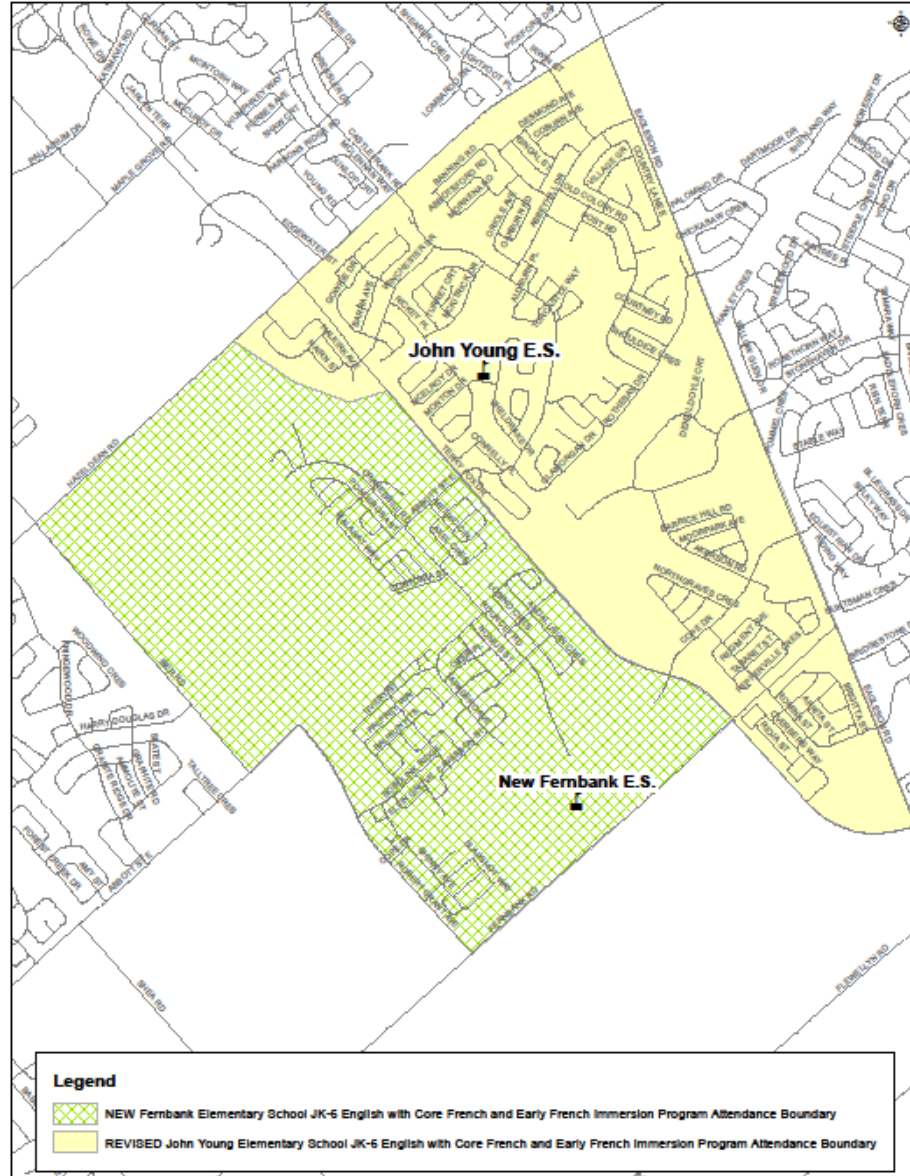
New Fernbank E.S. - Proposal

- The attendance boundary of the new school would include the area west of Terry Fox Drive and the Carp River, North of Fernbank Road, South of Hazeldean Road, and East of Robert Grant Avenue and Iber Road.

- As a result of the changes, John Young Elementary School's attendance boundary area would be reduced.



Proposed Attendance Boundary
NEW Fernbank Elementary School
JK-6 English Program with Core French and Early French Immersion
Attendance Boundaries



New Fernbank E.S. - Proposal

- Enrolment at the New Fernbank E.S. is projected at 322 students upon assumed opening and is projected to increase to 685 students By 2025.
- Enrolment at John Young E.S. is reduced to 624 students upon opening year of New Fernbank E.S., and 567 students by 2025 – limiting the need for portable classrooms on site.

Student Movement Under the Proposal

- Upon opening of the New Fernbank E.S., all JK to Grade 5 John Young E.S. students residing in the attendance boundary for the new school would be redirected in a block move.
- The block move would serve to alleviate significant enrolment pressures at John Young E.S.
- Given the enrolment pressures at John Young E.S., staff is not proposing grandfathering provisions be put in place for students – *We would like to hear feedback / comments regarding this.*

Proposed Middle French Immersion Changes

- Middle French Immersion students residing in Fernbank Development area are directed to either Bridlewood Community E.S. (Grades 4-6) and Glen Cairn P.S. (Grades 7-8); or A. Lorne Cassidy E.S. (Grades 4 to 8).
- Staff is proposing that MFI boundaries in the area be revised so that the Fernbank Development area is directed to the same set of schools for the program.

Proposed Middle French Immersion Changes

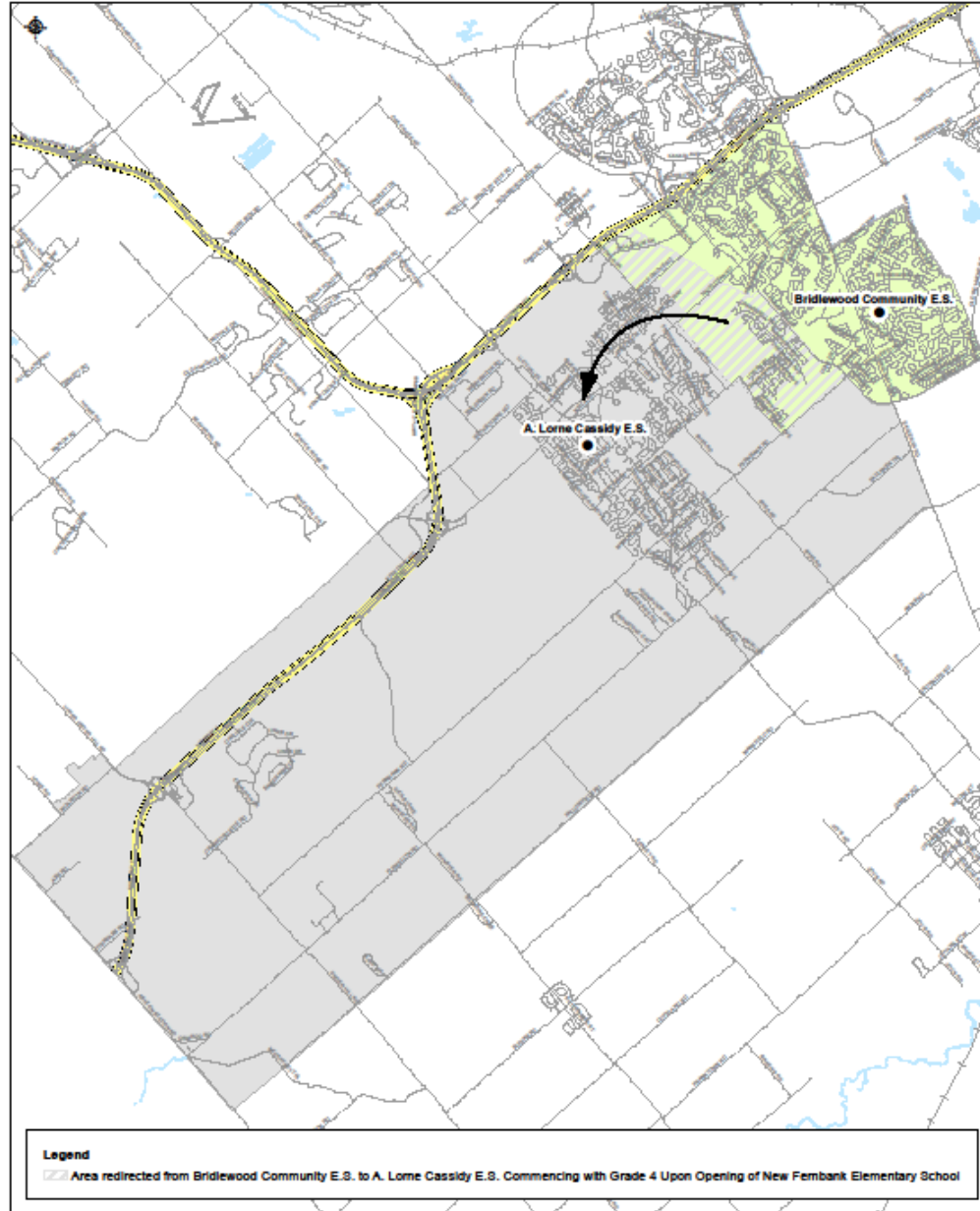
- Upon the opening year of the New Fernbank E.S., Grade 4 MFI program students residing within the Fernbank Development area and areas north of Hazeldean Road would be directed to A. Lorne Cassidy E.S.
- These areas would phase out of the MFI attendance boundary for Bridlewood Community E.S. and into the attendance boundary for A. Lorne Cassidy E.S., one grade per year.
- The intermediate MFI attendance boundaries in the Stittsville area would be reviewed as part of the New Stittsville Secondary School Study in order to align with the proposed changes in this study.



Proposed Attendance Boundary Revisions

A. Lorne Cassidy E.S. and Bridlewood Community E.S.

Middle French Immersion Program Attendance Boundaries



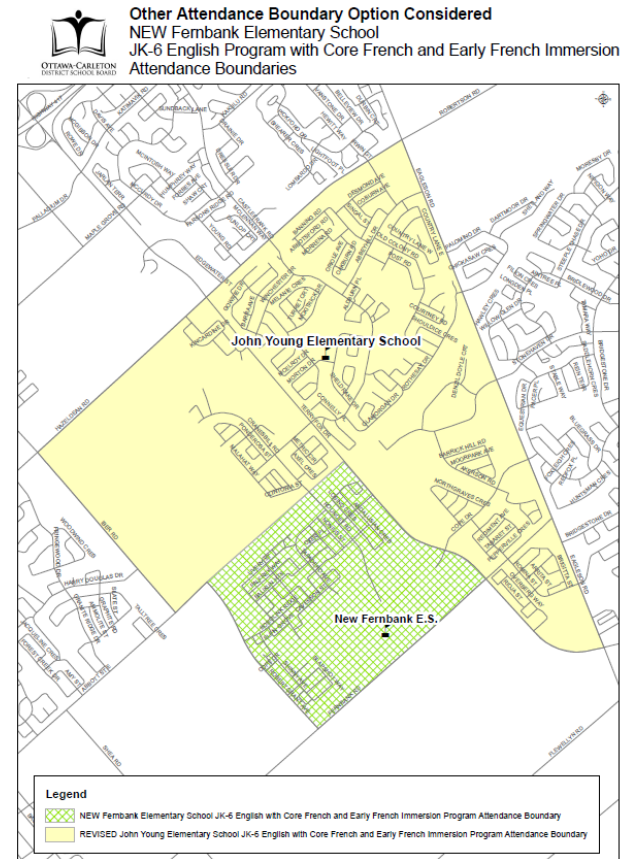
Prepared by OCDSB Planning Department using digital data that was provided by the City of Ottawa and is protected by copyright.

OTTAWA-CARLETON
DISTRICT SCHOOL BOARD

   www.ocdsb.ca

New Fernbank E.S. - Other Options Considered

- An attendance boundary that would comprise of the portion of the John Young E.S. boundary that is bounded by the Trans Canada Trail to the north, Robert Grant Avenue to the west, Fernbank Road to the south, and Terry Fox Drive to the east was analyzed.



New Fernbank E.S. - Other Options Considered

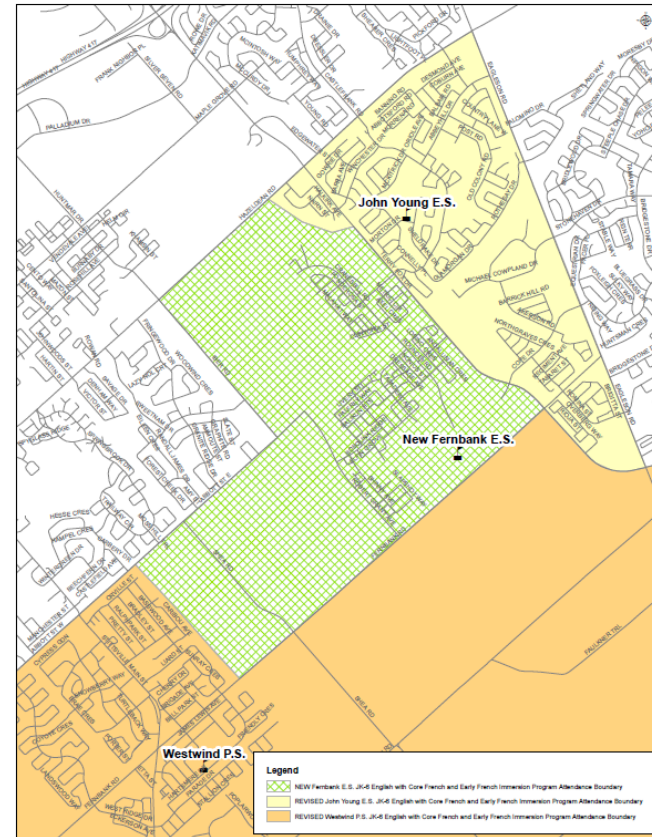
- There would not be enough students redirected from John Young E.S. to sufficiently reduce existing accommodation pressures.
- The smaller boundary area would also result in a longer-term low utilization rate.
- The attendance boundary would serve to limit access to a new school facility for a number of students and families in Fernbank.

New Fernbank E.S. - Other Options Considered

- An attendance boundary that would comprise of the entire Fernbank Development area was also analyzed.



Other Attendance Boundary Option Considered
NEW Fernbank Elementary School
JK-6 Early French Immersion Program Attendance Boundaries



OTTAWA-CARLETON
DISTRICT SCHOOL BOARD



www.ocdsb.ca

New Fernbank E.S. - Other Options Considered

- The attendance boundary area would include all of the Fernbank development area resulting in enrolment growing quickly.
- Future boundary revisions may take place more quickly given the anticipation of additional schools expected in the Fernbank area.
- The attendance boundary would significantly impact future enrolment at Westwind P.S. which is currently not experiencing accommodation pressures.

Timeline and Next Steps

- Feedback is welcome tonight and throughout the process. We would appreciate receiving your comments by Thursday June 6th. Note that all correspondence received by staff will be shared with Trustees.
- Input received will be reviewed and will inform staff's recommendation report which will be presented at the Committee of the Whole meeting on June 18 2019– final decisions by Board are scheduled for June 24 2019.
- The Committee of the Whole meeting will include delegations from the public and Trustee debate regarding staff's recommendations.

***Thank You for Participating
this Evening!***



OTTAWA-CARLETON
DISTRICT SCHOOL BOARD



www.ocdsb.ca