

# **Working Group Meeting #1**

## **New Fernbank Elementary School Opening Grade Structure, Program, and Attendance Boundary Study**

### **Information Package**

**20 February 2019  
7:00 to 9:00 p.m.**

**Library  
John Young Elementary School  
5 Morton Drive**



---

---

## Table of Contents

	Page
1. Introduction and Background	1
2. Planning Considerations	1-2
3. Study Objectives	2-3
4. The Working Group	3
5. Consultative Process and Next Steps	3-4
6. Study Timeline	5
7. General Location Map	6
8. John Young Elementary School Attendance Boundary Map	7
9. Current Enrolment and Five Year Status Quo Projections	8-15
10. School Summaries	16-17
11. Study Planning Areas and Current Enrolment by Area	18-22
12. Study Area New Residential Development Potential	23
Additional Supporting Information	24
John Young ES Historical Enrolment	25
Attendance Boundary Maps – Other Study Schools	26-29
Board Report	30-37
Monthly Calendars	38-42

---

---

## **Introduction and Background**

This study has been initiated in order to set the attendance boundary, opening grade structure, and program offering for a future new Ottawa-Carleton District School Board (OCDSB) elementary school to be opened in the Fernbank development area of Stittsville.

The need for a new elementary school in the development area was first identified in 2008 as part of the City of Ottawa's Fernbank Community Design Plan (CDP). In total the CDP process resulted in the identification of a requirement for four future elementary school sites and one secondary school site.

In May 2018 the Board approved a list of updated capital priorities which ranked the opening of a new elementary school in the Fernbank development area as the highest project. The identified planned opening date for the new school was September 2020.

Funding for the construction of new schools has typically been provided to school boards by the Ministry of Education via an annual business case submission process. The last submission request date from the province was in September 2017.

Although we do not have information from the Ministry regarding when the next capital request will be received, the completion of a study to confirm the new school's program and attendance area will be of benefit given the urgency of need and the project's planned opening date.

## **Planning Considerations**

Fernbank is a developing new residential area expected to contain approximately 11,000 new homes at full build-out. The first school to be opened is one of four elementary schools planned for the OCDSB in the community.

A majority of Kindergarten to Grade 6 students residing in Fernbank are directed to John Young Elementary School. The school is located at 5 Morton Drive within the Glen Cairn portion of Kanata South. John Young Elementary School serves students from Kindergarten to Grade 6 and offers both an English Program with Core French and an Early French Immersion program.

In addition to serving students residing within the Fernbank development area, John Young Elementary School's attendance area also includes the neighborhood of Glen Cairn and the developing Trailwest Community.

As a result of accommodating students residing within the growing Fernbank Community in advance of the opening of a new school, John Young Elementary School is experiencing significant enrolment pressures. The school currently requires the use of 11 portable classrooms on site and is accommodating 735 students in a facility with a pupil capacity of 547. Enrolment at the school and the need for additional instructional space is expected to continue to grow.

An area that is not currently designated to John Young Elementary School but is located within the Fernbank development area lies west of Robert Grant Avenue. This area is currently undeveloped. Future students from this area would currently be directed to the following schools: Westwind Public School (English Program with Core French and Early French Immersion); and A. Lorne Cassidy Elementary School (Middle French Immersion).

As indicated earlier, there are four elementary school sites identified for the OCDSB within the larger Fernbank CDP area. The map found on Page 5 of the package provides approximate locations for these sites. Fernbank ES 1 is situated at the southwest corner of Cope Drive and Rouncey Road within the Blackstone subdivision. It is a 2.84 hectare parcel (approximately seven acres) located adjacent to a municipal park, and is the only elementary school site which is serviced and development-ready.

Given its status, the working assumption for the study will be that the Fernbank ES 1 site will be the eventual location of the new school. The Board is currently working toward acquisition of a site, and will likely be able to provide a progress update to the group over the next few months.

It should be noted also that a New Stittsville Secondary School study is expected to commence in either the late spring or early fall of 2019. Capital funding for this new Grade 7 to 12 school scheduled to open in September 2022 has already been approved by the province. Given its grade structure the study will include local schools serving both Intermediate (Grade 7 and 8) and Secondary (Grade 9 to 12) students.

## **Study Objectives**

The study's objective is to gain Board approval for the setting of an attendance boundary, opening grade structure and program offering for a future New Fernbank Elementary School.

In doing so, we should ensure that we create attendance boundaries which make sense from a longer-term planning perspective, have regard for intermediate and secondary student feeding patterns, and account for future new schools.

## **The Working Group**

The working group is to be comprised of Board staff and two representatives from each of the following study schools:

- John Young Elementary School;
- Bridlewood Community Elementary School;
- A. Lorne Cassidy Elementary School; and
- Westwind Public School.

Should it be necessary, representation on the working group from other local area schools may be sought.

Representatives from local community associations will also be invited to sit on the working group. The trustee (s) for the area will be notified and invited to attend all working group meetings.

The working group's role will be to provide localized input and advice to planning staff with regard to the preparation and evaluation of options, community alignments, and parental and family preferences as they relate to student movement.

Representatives will also update their school councils and organizations regarding the study process and the direction it is taking, and in some cases request feedback on specific areas of discussion.

## **Consultative Process and Next Steps**

The working group will meet on a number of occasions throughout the winter and spring at various local area schools. The goal of the working group will be to come to a consensus regarding proposed options which could then be presented at a Public Consultation Meeting currently scheduled to take place in May 2019.

These options will address key study objectives and any relevant associated issues.

The purpose of the Public Consultation Meeting is to receive input from affected school communities and members of the public with regard to the presented proposals.

Parents and community members will be encouraged to provide input at the meeting

held that evening, however, feedback is appreciated and valued throughout the entire consultative process.

Once input from the community is reviewed, planning staff will prepare a recommendation report scheduled to go to the Board's Committee of the Whole in June 2019. That meeting will include an opportunity for delegations from the public and Trustee debate regarding staff's recommendations.

A final decision by the Board regarding the study is also currently scheduled to take place in June 2019.

Public comments and/or questions regarding the study may be sent in to the following:

**Email:**        [NewFernbankES@ocdsb.ca](mailto:NewFernbankES@ocdsb.ca)

**Fax:**            613-820-6968

**Mail:**            New Fernbank Elementary School  
                      Planning Department  
                      133 Greenbank Road  
                      Ottawa ON  
                      K2H 6L3

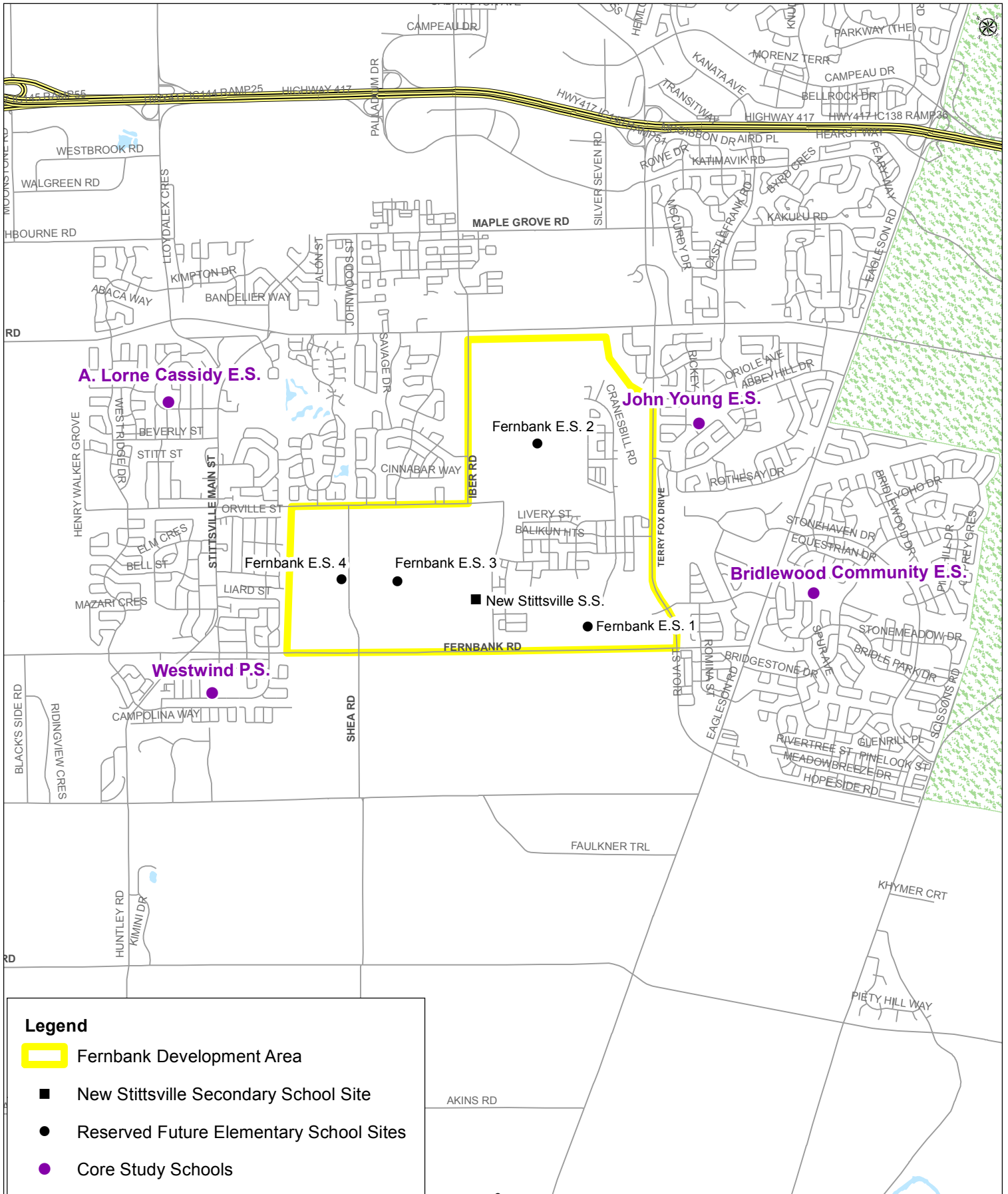
---

## NEW FERNBANK ELEMENTARY SCHOOL STUDY TIMELINE

Activity	Date
<p><b>Notice of Intention to Commence Study</b></p> <ul style="list-style-type: none"> <li>➤ Board Approval of Study Consultation Plan and Timeline</li> </ul>	<p>January 29, 2019</p>
<p><b>Consultative Stage</b></p> <ul style="list-style-type: none"> <li>➤ Formation of Working Group</li> <li>➤ Working Group Meeting #1</li> <li>➤ Working Group Meeting #2</li> <li>➤ Working Group Meeting #3</li> <li>➤ <b>Public Consultation Meeting</b></li> </ul>	<p>Late January 2019</p> <p>February 20, 2019</p> <p>March 2019</p> <p>April 2019</p> <p>May 2019 (tent.)</p>
<p><b>Recommendation and Decision Making Stage</b></p> <ul style="list-style-type: none"> <li>➤ Regular Committee of the Whole Meeting – Presentation of Staff Recommendation Report</li> <li>➤ Regular Board Meeting – Final Study Decisions</li> </ul>	<p>June 2019 (tent.)</p> <p>June 2019 (tent.)</p>
<p><b>Communication and Implementation Stage</b></p> <ul style="list-style-type: none"> <li>➤ Communication of Board Approved Decision</li> <li>➤ Implementation of Board Approved Decision – School Opening</li> </ul>	<p>June &amp; September 2019</p> <p>TBD</p>

---

# New Fernbank E.S. Study General Location Map



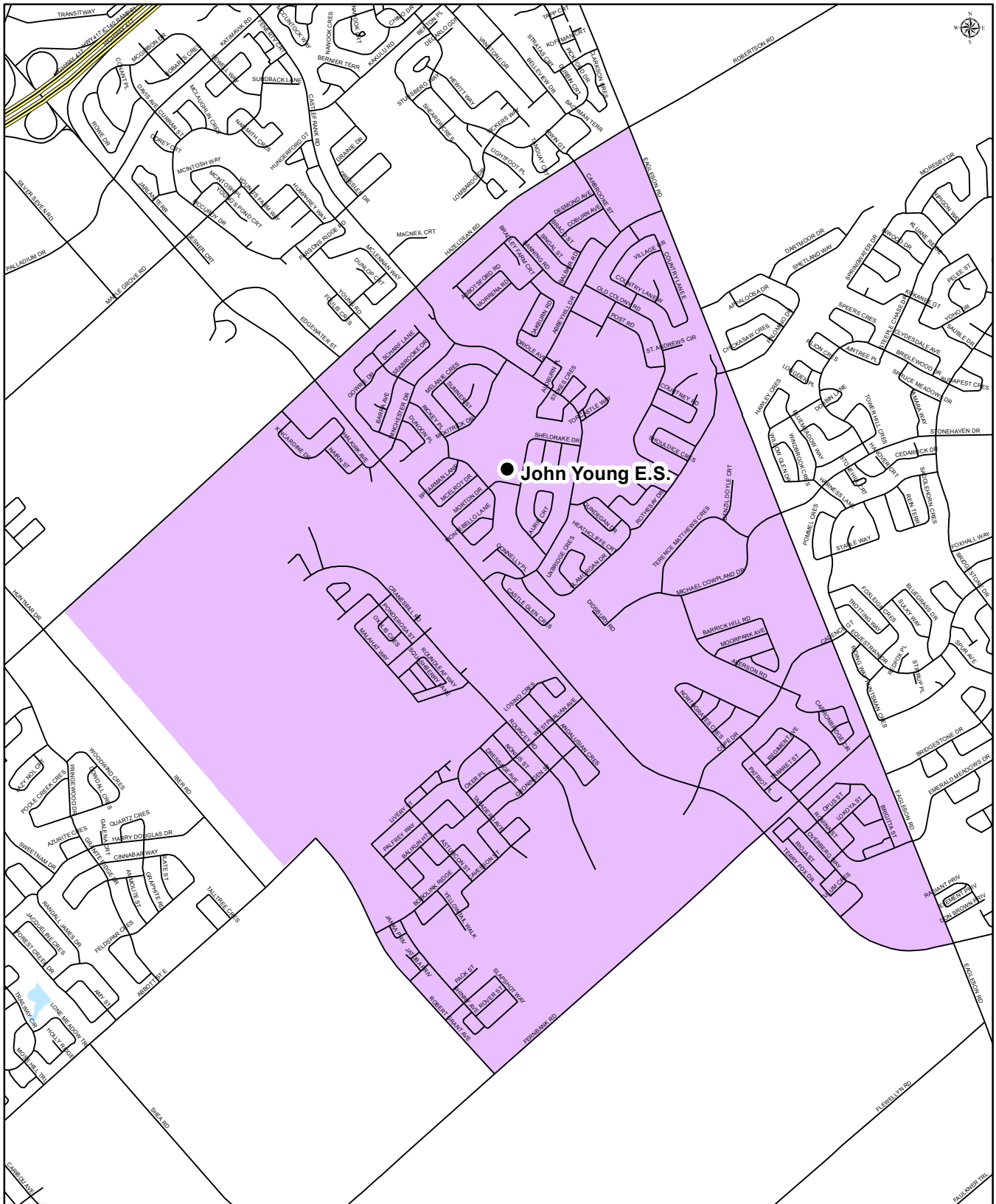




# JOHN YOUNG ELEMENTARY SCHOOL

## Junior Kindergarten to Grade 6

English Program with Core French and Early French Immersion Attendance Boundary



John Young Elementary School  
5 Morton Drive  
Kanata, Ontario  
K2L 1W7  
(613) 836-5987

Map is for illustrative purposes only.  
For further information, visit [www.ocdsb.ca](http://www.ocdsb.ca)  
September 2017

## New Fernbank Elementary School Study

### 31 October 2018 Enrolments

School	Capacity	Portables	Program	JK	SK	1	2	3	4	5	6	7	8	SE	Total	UF(%)		
A. Lorne Cassidy ES	600	4	KGTN	44	51											95	97.5%	
			ENG			7	12	22	11	17	19	10	18					116
			EFI			44	43	40	40	43	47	33	23					313
			MFI						17	9	8	18	9					61
			Total	44	51	51	55	62	68	69	74	61	50					585
Bridlewood Community ES	455	0	KGTN	47	45											92	80.2%	
			ENG			10	14	12	14	14	9				17			90
			EFI			27	28	24	25	15	18							137
			MFI						20	17	9							46
			Total	47	45	37	42	36	59	46	36				17			365
John Young ES	547	11	KGTN	107	103											210	134.4%	
			ENG			27	33	34	35	41	33				5			208
			EFI			76	65	52	47	45	32							317
			Total	107	103	103	98	86	82	86	65				5			735
Westwind PS	628	0	KGTN	41	47											88	85.2%	
			ENG			6	19	11	27	21	36							120
			EFI			50	54	51	50	64	58							327
			Total	41	47	56	73	62	77	85	94							535

Utilization (UF%) = Total enrolment/capacity.

Programs: ENG = English Program with Core French, EFI = Early French Immersion, MFI = Middle French Immersion, SE = Special Education

Portable numbers reflect those required for instruction as of fall 2018.

## New Fernbank Elementary School Study

### 2019 Projected Enrolments

School	Capacity	Program	JK	SK	1	2	3	4	5	6	7	8	SE	Total	UF(%)	
A. Lorne Cassidy ES	600	KGTN	46	51										97	99.5%	
		ENG			10	8	18	18	13	18	19	10				114
		EFI			44	44	45	38	40	42	38	31				322
		MFI						10	17	10	7	20				64
		Total	46	51	54	52	63	66	70	70	64	61				597
Bridlewood Community ES	455	KGTN	46	51										97	87.3%	
		ENG			11	15	14	10	12	17			17			96
		EFI			35	25	27	25	24	15						151
		MFI						16	21	16						53
		Total	46	51	46	40	41	51	57	48				17		397
John Young ES	547	KGTN	114	108										222	147.5%	
		ENG			28	39	42	35	42	47						233
		EFI			79	74	60	48	49	42						352
		Total	114	108	107	113	102	83	91	89						807
Westwind PS	628	KGTN	45	43										88	80.4%	
		ENG			5	11	26	11	28	22						103
		EFI			45	50	54	51	50	64						314
		Total	45	43	50	61	80	62	78	86						505

Utilization (UF%) = Total enrolment/capacity.

Programs: ENG = English Program with Core French, EFI = Early French Immersion, MFI = Middle French Immersion, SE = Special Education

## New Fernbank Elementary School Study

### 2020 Projected Enrolments

School	Capacity	Program	JK	SK	1	2	3	4	5	6	7	8	SE	Total	UF(%)	
A. Lorne Cassidy ES	600	KGTN	45	53										98	99.7%	
		ENG			10	12	12	14	21	14	18	19				120
		EFI			44	44	46	43	38	39	34	36				324
		MFI						10	10	19	9	8				56
		Total	45	53	54	56	58	67	69	72	61	63				598
Bridlewood Community ES	455	KGTN	41	50										91	91.4%	
		ENG			12	16	15	12	9	15			17			96
		EFI			40	33	25	28	24	24	24					174
		MFI						19	17	19						55
		Total	41	50	52	49	40	59	50	58			17			416
John Young ES	547	KGTN	123	115										238	159.6%	
		ENG			29	41	50	44	42	48						254
		EFI			83	77	69	56	50	46						381
		Total	123	115	112	118	119	100	92	94						873
		KGTN	47	50												97
Westwind PS	628	ENG			9	9	16	26	11	29				100	78.7%	
		EFI			42	46	52	55	52	50						297
		Total	47	50	51	55	68	81	63	79						494

Utilization (UF%) = Total enrolment/capacity.

Programs: ENG = English Program with Core French, EFI = Early French Immersion, MFI = Middle French Immersion, SE = Special Education

## New Fernbank Elementary School Study

### 2021 Projected Enrolments

School	Capacity	Program	JK	SK	1	2	3	4	5	6	7	8	SE	Total	UF(%)	
A. Lorne Cassidy ES	600	KGTN	44	52										96	99.8%	
		ENG			11	12	18	10	18	22	14	18				123
		EFI			46	44	46	44	43	37	31	32				323
		MFI						9	10	11	17	10				57
		Total	44	52	57	56	64	63	71	70	62	60				599
Bridlewood Community ES	455	KGTN	44	44										88	93.4%	
		ENG			12	18	16	13	10	11			17			97
		EFI			39	37	32	25	27	24						184
		MFI						20	20	16						56
		Total	44	44	51	55	48	58	57	51				17		425
John Young ES	547	KGTN	132	124										256	172.9%	
		ENG			31	43	52	52	53	49						280
		EFI			89	81	72	63	58	47						410
		Total	132	124	120	124	124	115	111	96						946
Westwind PS	628	KGTN	50	52										102	78.8%	
		ENG			10	15	14	16	26	12						93
		EFI			49	43	47	53	56	52						300
		Total	50	52	59	58	61	69	82	64						495

Utilization (UF%) = Total enrolment/capacity.

Programs: ENG = English Program with Core French, EFI = Early French Immersion, MFI = Middle French Immersion, SE = Special Education

## New Fernbank Elementary School Study

### 2022 Projected Enrolments

School	Capacity	Program	JK	SK	1	2	3	4	5	6	7	8	SE	Total	UF(%)	
A. Lorne Cassidy ES	600	KGTN	45	51										96	99.8%	
		ENG			10	12	17	14	12	18	22	14				119
		EFI			45	46	46	44	44	42	30	30				327
		MFI						8	9	11	10	19				57
		Total	45	51	55	58	63	66	65	71	62	63				599
Bridlewood Community ES	455	KGTN	43	48										91	97.1%	
		ENG			11	18	18	14	11	13			17			102
		EFI			35	36	36	33	24	27						191
		MFI						20	20	18						58
		Total	43	48	46	54	54	67	55	58			17			442
John Young ES	547	KGTN	141	133										274	188.1%	
		ENG			34	45	55	54	63	61						312
		EFI			96	86	75	66	66	54						443
		Total	141	133	130	131	130	120	129	115						1029
Westwind PS	628	KGTN	55	55										110	82.2%	
		ENG			10	17	20	14	16	27						104
		EFI			51	49	44	48	54	56						302
		Total	55	55	61	66	64	62	70	83						516

Utilization (UF%) = Total enrolment/capacity.

Programs: ENG = English Program with Core French, EFI = Early French Immersion, MFI = Middle French Immersion, SE = Special Education

## New Fernbank Elementary School Study

### 2023 Projected Enrolments

School	Capacity	Program	JK	SK	1	2	3	4	5	6	7	8	SE	Total	UF(%)
A. Lorne Cassidy ES	600	KGTN	44	52										96	99.7%
		ENG			10	12	18	14	17	12	18	22		123	
		EFI			44	45	48	44	44	43	34	28		330	
		MFI						10	8	10	10	11		49	
		Total	44	52	54	57	66	68	69	65	62	61		598	
Bridlewood Community ES	455	KGTN	43	46										89	98.9%
		ENG			11	16	18	16	12	14			17	104	
		EFI			37	32	35	37	32	24				197	
		MFI						20	21	19				60	
		Total	43	46	48	48	53	73	65	57			17	450	
John Young ES	547	KGTN	150	142										292	201.8%
		ENG			36	49	58	57	65	72				337	
		EFI			103	93	80	69	68	62				475	
		Total	150	142	139	142	138	126	133	134				1104	
Westwind PS	628	KGTN	60	61										121	84.2%
		ENG			11	18	23	20	14	17				103	
		EFI			54	52	51	45	49	54				305	
		Total	60	61	65	70	74	65	63	71				529	

Utilization (UF%) = Total enrolment/capacity.

Programs: ENG = English Program with Core French, EFI = Early French Immersion, MFI = Middle French Immersion, SE = Special Education

**New Fernbank Elementary School Study**

**2024 Projected Enrolments**

School	Capacity	Program	JK	SK	1	2	3	4	5	6	7	8	SE	Total	UF (%)	
A. Lorne Cassidy ES	600	KGTN	45	51										96	100.0%	
		ENG			10	12	18	15	17	18	12	18				120
		EFI			45	44	47	45	44	43	34	32				334
		MFI						11	10	9	9	11				50
		Total	45	51	55	56	65	71	71	71	70	55	61			600
Bridlewood Community ES	455	KGTN	43	46										89	101.1%	
		ENG			11	17	16	15	14	15			17			105
		EFI			36	34	31	36	36	32	32					205
		MFI						21	21	19						61
		Total	43	46	47	51	47	72	72	71	66			17		460
John Young ES	547	KGTN	160	152										312	214.8%	
		ENG			38	53	63	60	68	75						357
		EFI			110	100	86	74	72	64						506
		Total	160	152	148	153	149	134	140	139						1175
Westwind PS	628	KGTN	65	66										131	89.0%	
		ENG			12	19	24	23	21	15						114
		EFI			59	55	53	52	46	49						314
		Total	65	66	71	74	77	75	67	64						559

Utilization (UF%) = Total enrolment/capacity.  
 Programs: ENG = English Program with Core French, EFI = Early French Immersion, MFI = Middle French Immersion, SE = Special Education



## New Fernbank Elementary School Study

### 2025 Projected Enrolments

School	Capacity	Program	JK	SK	1	2	3	4	5	6	7	8	SE	Total	UF (%)	
A. Lorne Cassidy ES	600	KGTN	44	52										96	100.2%	
		ENG			10	12	17	14	18	18	18	12				119
		EFI			44	45	46	45	45	43	34	33				335
		MFI						11	11	11	8	10				51
		Total	44	52	54	57	63	70	74	72	60	55				601
Bridlewood Community ES	455	KGTN	43	46										89	102.2%	
		ENG			11	17	17	14	13	17			17			106
		EFI			36	34	34	32	35	36						207
		MFI						21	22	20						63
		Total	43	46	47	51	51	67	70	73				17		465
John Young ES	547	KGTN	170	162										332	228.9%	
		ENG			41	56	67	65	73	78						380
		EFI			117	106	93	79	77	68						540
		Total	170	162	158	162	160	144	150	146						1252
Westwind PS	628	KGTN	70	72										142	96.7%	
		ENG			13	21	26	24	24	22						130
		EFI			65	60	57	54	53	46						335
		Total	70	72	78	81	83	78	77	68						607

Utilization (UF%) = Total enrolment/capacity.

Programs: ENG = English Program with Core French, EFI = Early French Immersion, MFI = Middle French Immersion, SE = Special Education

## School Summaries for 2018-2019

### **John Young Elementary School**

- JK to Grade 6 English Program with Core French (ENG) and Early French Immersion (EFI)
- The school currently has one Behaviour Intervention Program (BIP) class, which will be relocated to Glen Cairn Public School for September 2019
- Middle French Immersion (MFI) students residing in John Young Elementary School's attendance area are directed to Bridlewood Community Elementary School
- October 31, 2018 enrolment at the school was 735 students
- School capacity is 547; utilization rate based on October 2018 enrolment was 134%
- Currently there are 11 portables on site required for instructional use
- Forecast is for enrolment at the school to increase significantly over the next five years

### **Bridlewood Community Elementary School**

- JK to Grade 6 English Program with Core French (ENG), Early French Immersion (EFI), and Grades 4 to 6 Middle French Immersion (MFI)
- The school has a Behaviour Intervention Program (BIP) class and a Primary Special Needs (PSN) class
- October 31, 2018 enrolment at the school was 365 students
- School capacity is 455; utilization rate based on October 2018 enrolment was 80%
- There are currently no portables required for instructional use
- Forecast is for enrolment at the school to gradually increase over the next five years

### **A. Lorne Cassidy Elementary School**

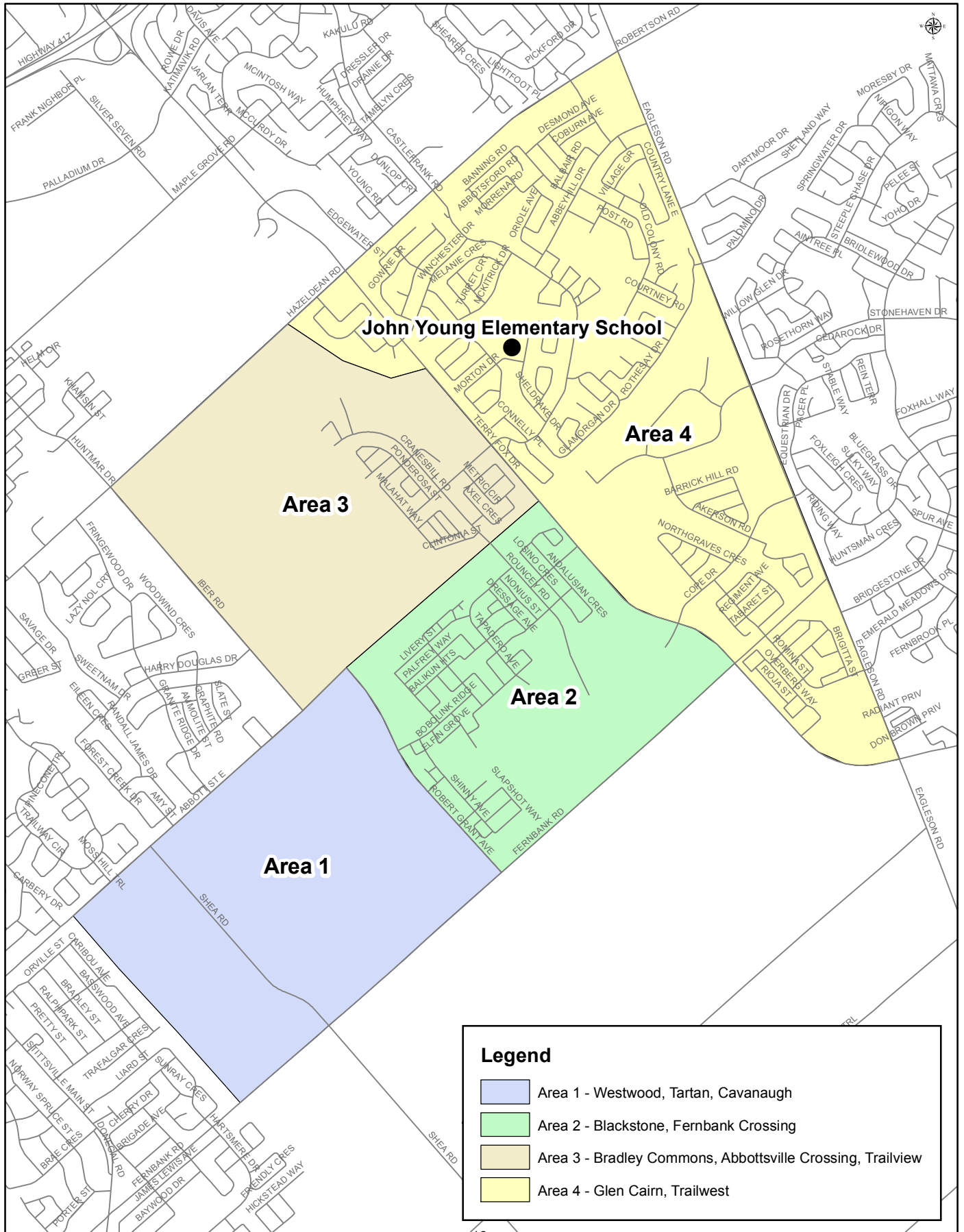
- JK to Grade 8 English Program with Core French (ENG), Early French Immersion (EFI), and Grades 4 to 8 Middle French Immersion (MFI)
- October 31, 2018 enrolment at the school was 585 students
- School capacity is 600; utilization rate based on October 2018 enrolment was 98%
- Currently there are four portables on site required for instructional use
- Forecast is for enrolment at the school to remain stable over the next five years

## **Westwind Public School**

- JK to Grade 6 English Program with Core French (ENG) and Early French Immersion (EFI)
- Middle French Immersion (MFI) students residing in Westwind Public School's attendance area are directed to A. Lorne Cassidy Elementary School
- October 31, 2018 enrolment at the school was 535 students
- School Capacity is 628; utilization rate based on October 2018 enrolment was 85%
- There are currently no portables required for instructional use
- Forecast is for enrolment at the school to decrease slightly in next few years, however increase overall five years out



# Study Planning Areas



# Study Planning Area # 1 - Westwood, Tartan, Cavanaugh

**Designated Elementary Schools:**

JK-6 ENG/EFI - Westwind PS  
 4-6 MFI - A. Lorne Cassidy ES

**Enrolment Distribution by Program:**

English Program with Core French											
	JK	SK	1	2	3	4	5	6	7	8	Total
Westwind PS											0
<i>Other</i>											0
<b>Total</b>	0	0	0	0	0	0	0	0			0

Early French Immersion											
	JK	SK	1	2	3	4	5	6	7	8	Total
Westwind PS											0
<i>Other</i>											0
<b>Total</b>			0	0	0	0	0	0			0

Middle French Immersion											
	JK	SK	1	2	3	4	5	6	7	8	Total
A. Lorne Cassidy ES											0
<i>Other</i>											0
<b>Total</b>						0	0	0			0

Congregated Special Education											
	JK	SK	1	2	3	4	5	6	7	8	Total
											0
<b>Total</b>			0	0	0	0	0	0			0

Totals by School for Planning Area # 1											
	JK	SK	1	2	3	4	5	6	7	8	Total
Westwind PS	0	0	0	0	0	0	0	0			0
A. Lorne Cassidy ES						0	0	0			0
<i>Other</i>	0	0	0	0	0	0	0	0			0
<b>Grand Total</b>	0	0	0	0	0	0	0	0			0

**Notes**

1) No students currently reside within Planning Area #1.

## Study Planning Area # 2 - Blackstone, Fernbank Crossing

### Designated Elementary Schools:

JK-6 ENG/EFI - John Young ES  
 4-6 MFI - Bridlewood Community ES

### Enrolment Distribution by Program:

English Program with Core French											
	JK	SK	1	2	3	4	5	6	7	8	Total
John Young ES	32	22	5	8	9	7	4	9			96
<i>Other</i>	2	1				2					5
<b>Total</b>	34	23	5	8	9	9	4	9			101

Early French Immersion											
	JK	SK	1	2	3	4	5	6	7	8	Total
John Young ES			9	12	4	11	7	5			48
<i>Other</i>			1								1
<b>Total</b>			10	12	4	11	7	5			49

Middle French Immersion											
	JK	SK	1	2	3	4	5	6	7	8	Total
Bridlewood Community ES						4	3	1			8
<i>Other</i>											0
<b>Total</b>						4	3	1			8

Totals by School for Planning Area # 2											
	JK	SK	1	2	3	4	5	6	7	8	Total
John Young ES	32	22	14	20	13	18	11	14			144
Bridlewood Community ES						4	3	1			8
<i>Other</i>	2	1	1	0	0	2	0	0			6
<b>Grand Total</b>	34	23	15	20	13	24	14	15			158

### Notes

- 1) Numbers reflect 31 October 2018 enrolments.
- 2) *Other* indicates students residing in the Planning Area who are attending a different OCDSB school for that program.

## Study Planning Area # 3 - Bradley Commons, Abbotsville Crossing, Trailview

### Designated Elementary Schools:

JK-6 ENG/EFI - John Young ES  
4-6 MFI - Bridlewood Community ES

### Enrolment Distribution by Program:

English Program with Core French											
	JK	SK	1	2	3	4	5	6	7	8	Total
John Young ES	4	5	3	1	1	0	2	4			20
<i>Other</i>											0
<b>Total</b>	4	5	3	1	1	0	2	4			20

Early French Immersion											
	JK	SK	1	2	3	4	5	6	7	8	Total
John Young ES			4	1	2	1	3	1			12
<i>Other</i>											0
<b>Total</b>			4	1	2	1	3	1			12

Middle French Immersion											
	JK	SK	1	2	3	4	5	6	7	8	Total
Bridlewood Community ES						0	0	0			0
<i>Other</i>											0
<b>Total</b>						0	0	0			0

Totals by School for Planning Area # 3											
	JK	SK	1	2	3	4	5	6	7	8	Total
John Young ES	4	5	7	2	3	1	5	5			32
Bridlewood Community ES						0	0	0			0
<i>Other</i>	0	0	0	0	0	0	0	0			0
<b>Grand Total</b>	4	5	7	2	3	1	5	5			32

### Notes

- 1) Numbers reflect 31 October 2018 enrolments.
- 2) *Other* indicates students residing in the Planning Area who are attending a different OCDSB school for that program.

## Study Planning Area # 4 - Glen Cairn, Trailwest

### Designated Elementary Schools:

JK-6 ENG/EFI - John Young ES  
 4-6 MFI - Bridlewood Community ES

### Enrolment Distribution by Program:

English Program with Core French											
	JK	SK	1	2	3	4	5	6	7	8	Total
John Young ES	69	75	18	24	23	27	31	18			285
<i>Other</i>	3	3	1	1	2	1	2	1			14
<b>Total</b>	72	78	19	25	25	28	33	19			299

Early French Immersion											
	JK	SK	1	2	3	4	5	6	7	8	Total
John Young ES			60	50	46	34	34	25			249
<i>Other</i>			3	1	5	1		2			12
<b>Total</b>			63	51	51	35	34	27			261

Middle French Immersion											
	JK	SK	1	2	3	4	5	6	7	8	Total
Bridlewood Community ES						2	4	2			8
<i>Other</i>								1			1
<b>Total</b>						2	4	3			9

Totals by School for Planning Area # 4											
	JK	SK	1	2	3	4	5	6	7	8	Total
John Young ES	69	75	78	74	69	61	65	43			534
Bridlewood Community ES						2	4	2			8
<i>Other</i>	3	3	4	2	7	2	2	4			27
<b>Grand Total</b>	72	78	82	76	76	65	71	49			569

### Notes

- 1) Numbers reflect 31 October 2018 enrolments.
- 2) *Other* indicates students residing in the Planning Area who are attending a different OCDSB school for that program.



# Study Area New Residential Development Potential

## Overview

Fernbank is one of the larger new residential development areas located in the District. Significant new construction in this area has commenced over the last several years, and full buildout for the area is identified as approximately 11,000 units. The OCDSB has reserved four elementary school sites and one secondary school site within the Fernbank development.

### **Study Planning Area #1 – Westwood, Tartan, Cavanaugh**

This area is bounded by Robert Grant Avenue, Fernbank Road, both sides of Shea Road, and Abbott Street East.

Two future OCDSB elementary school sites and one OCDSB Secondary School site are reserved within this area. There are draft-approved and registered plans for at least 1,600 future dwelling units in this Planning Area, with further proposals expected.

As of the fall of 2018 there are currently no students generated from this area as new builds are yet to be occupied.

### **Study Planning Area #2 – Blackstone, Fernbank Crossing**

This area is bounded by Robert Grant Avenue, Fernbank Road, Terry Fox Drive, and the Trans Canada Trail and is currently the most developed section of Fernbank. There is one future OCDSB elementary school site located in this planning area.

A number of homes have been constructed and occupied in this area, and there are subdivision plans in various stages of development with potential for an additional 2,000+ residential units.

### **Study Planning Area #3 – Bradley Commons, Abbottsville Crossing, Trail View**

This area is bounded by Iber Road, the Trans Canada Trail, Terry Fox Drive, and Hazeldean Road. There is one future OCDSB elementary school site located in this planning area.

A number of new homes have been constructed in this area, and there are several other proposed developments in various planning stages with potential for an additional 3,000+ residential units.

### **Study Planning Area #4 – Glen Cairn, Trailwest**

This study planning area consists of mature neighbourhoods which have mostly been developed. There are low to high density proposals in various stages in the Trailwest area consisting of approximately 1,100 new residential units.

---

---

## **Additional Supporting Information**

- **John Young ES Historical Enrolment**
- **Attendance Boundary Maps – Other Study Schools**
- **Board Report**
- **Monthly Calendars – February to June 2019**

**SCHOOL:****JOHN YOUNG ELEMENTARY SCHOOL****Historical Enrolment - ALL PROGRAMS**

Year	JK	SK	1	2	3	4	5	6	7	8	Spec	TOTAL
2008	53	37	54	57	44	40	38	44			6	373
2009	26	61	48	54	56	40	36	41			7	369
2010	38	35	68	44	59	53	40	40			8	385
2011	43	33	46	70	51	54	51	43			8	399
2012	44	52	42	50	75	53	64	49			8	437
2013	81	78	63	58	65	72	68	68			8	561
2014	82	91	83	64	54	57	68	68			7	574
2015	96	87	97	90	74	60	59	74			7	644
2016	99	87	84	92	93	71	63	59			7	655
2017	102	99	86	86	96	88	73	66			7	703
2018	107	103	103	98	86	82	86	65			5	735

**Historical Enrolment - KINDERGARTEN**

Year	JK	SK	1	2	3	4	5	6	7	8	Spec	TOTAL
2016	99	87										186
2017	102	99										201
2018	107	103										210

**Historical Enrolment - ENGLISH**

Year	JK	SK	1	2	3	4	5	6	7	8	Spec	TOTAL
2008	53	8	19	19	14	13	21	22			6	175
2009	26	11	10	22	21	15	12	23			7	147
2010	38	8	15	9	24	18	15	13			8	148
2011	43	6	12	19	15	25	13	17			8	158
2012	44	9	9	16	25	17	29	13			8	170
2013	81	19	21	19	29	25	30	30			8	262
2014	82	20	18	22	21	23	21	33			7	247
2015	96	17	23	26	26	20	24	26			7	265
2016			20	25	32	29	25	27			7	165
2017			21	29	36	33	32	32			7	190
2018			27	33	34	35	41	33			5	208

**Historical Enrolment - EARLY FRENCH IMMERSION**

Year	JK	SK	1	2	3	4	5	6	7	8	Spec	TOTAL
2008		29	24	27	17	14	8	9				128
2009		50	30	21	24	13	13	7				158
2010		27	48	27	23	24	13	15				177
2011		27	27	41	25	21	25	14				180
2012		43	27	24	38	25	23	23				203
2013		59	41	29	24	37	25	26				241
2014		71	58	39	23	22	35	23				271
2015		70	69	53	40	27	22	37				318
2016			63	60	48	35	25	21				252
2017			65	54	52	42	33	20				266
2018			76	65	52	47	45	32				317

**Historical Enrolment - GIFTED ENGLISH**

Year	JK	SK	1	2	3	4	5	6	7	8	Spec	TOTAL
2008			11	11	13	13	9	13				70
2009			8	11	11	12	11	11				64
2010			5	8	12	11	12	12				60
2011			7	10	11	8	13	12				61
2012			6	10	12	11	12	13				64
2013			1	10	12	10	13	12				58
2014			7	3	10	12	12	12				56
2015			5	11	8	13	13	11				61
2016			1	7	13	7	13	11				52
2017				3	8	13	8	14				46
2018												

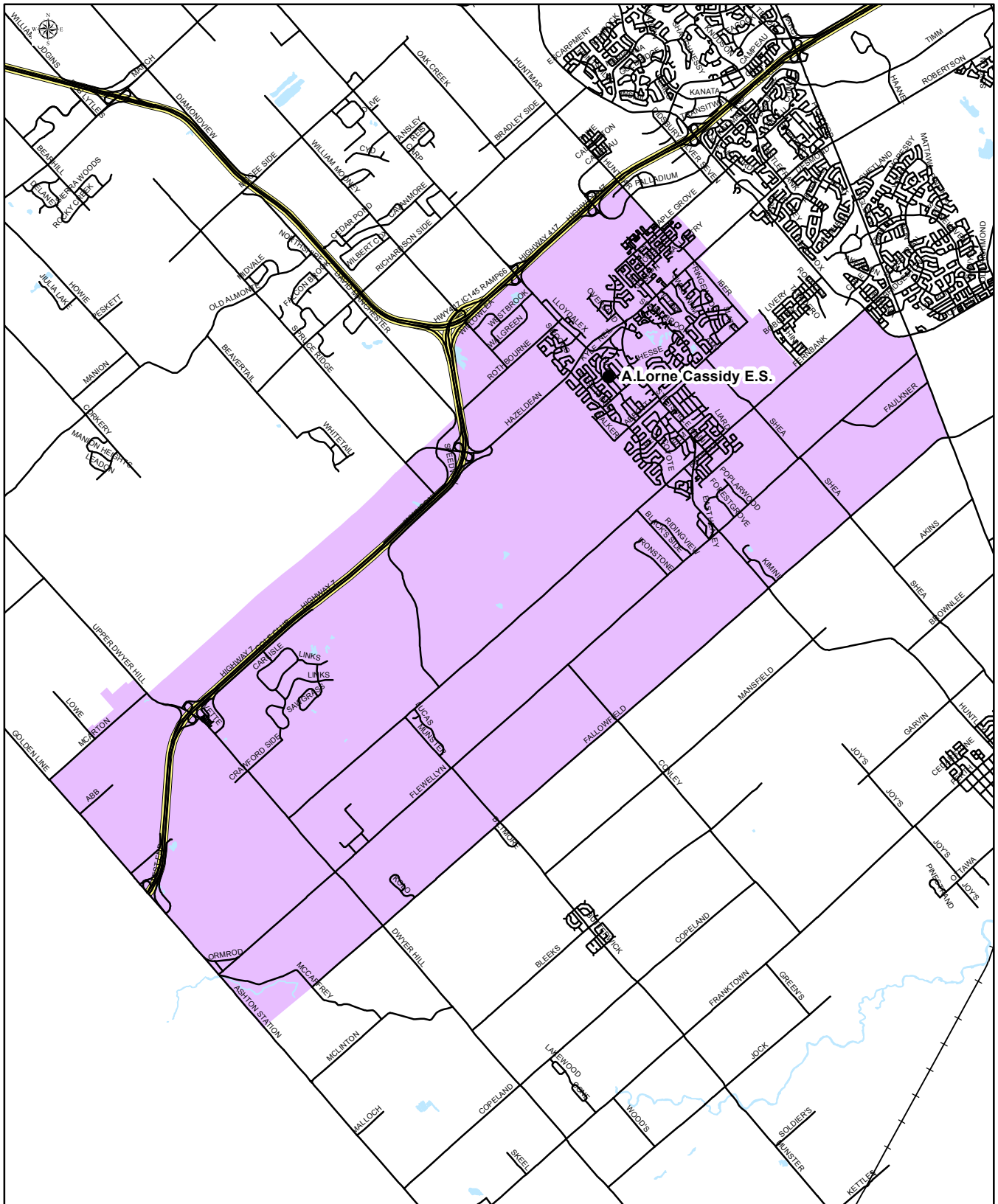


OTTAWA-CARLETON  
DISTRICT SCHOOL BOARD

# A. LORNE CASSIDY ELEMENTARY SCHOOL

## Grade 4 to 8

### Middle French Immersion Attendance Boundary



A.Lorne Cassidy Elementary School  
27 Hobin Street  
Stittsville, Ontario  
K2S 1G8  
(613) 831-3434

Map is for illustrative purposes only.  
For further information, visit [www.ocdsb.ca](http://www.ocdsb.ca)  
September 2016

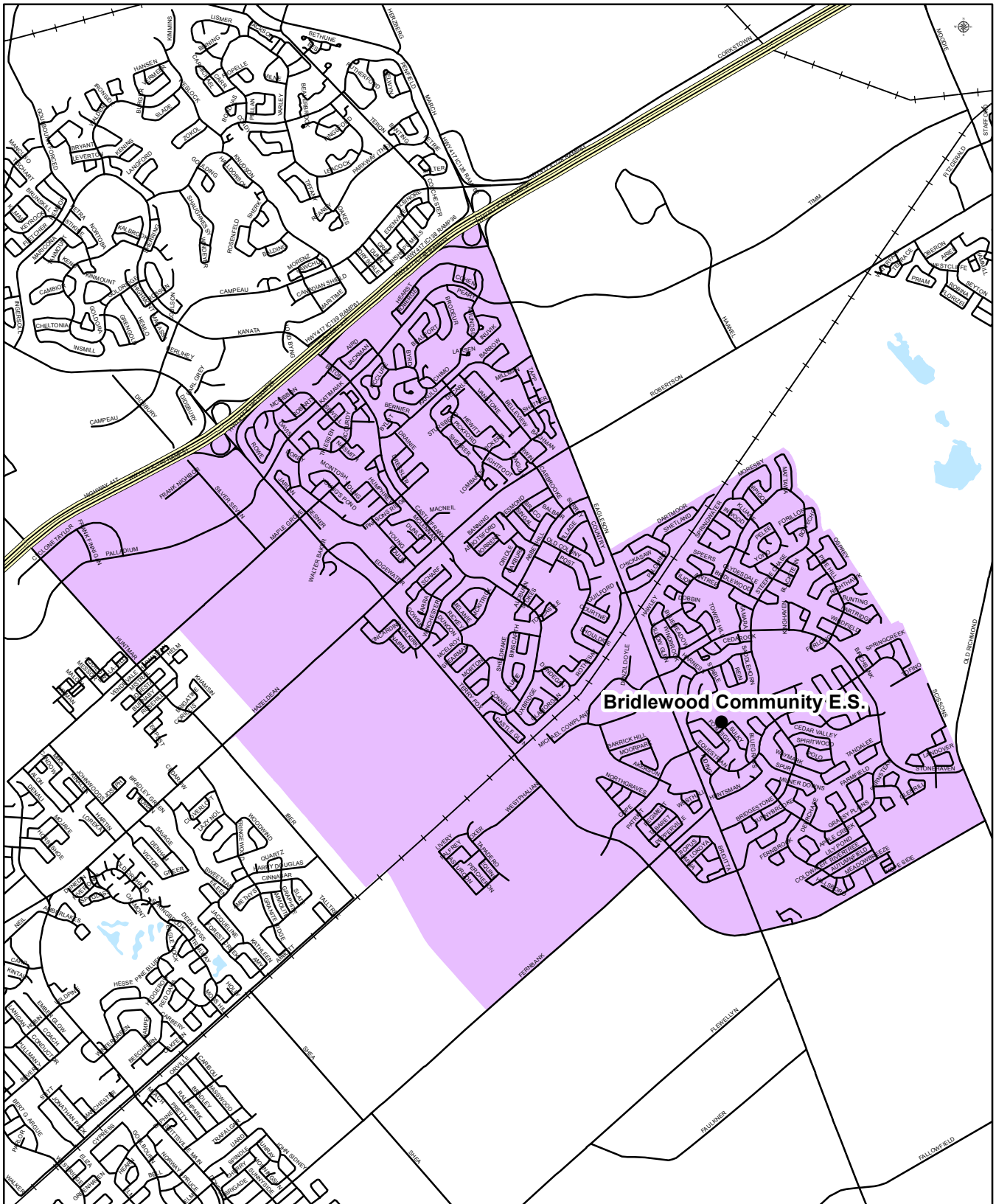


OTTAWA-CARLETON  
DISTRICT SCHOOL BOARD

# BRIDLEWOOD COMMUNITY ELEMENTARY SCHOOL

## Grade 4 to 6

### Middle French Immersion Attendance Boundary



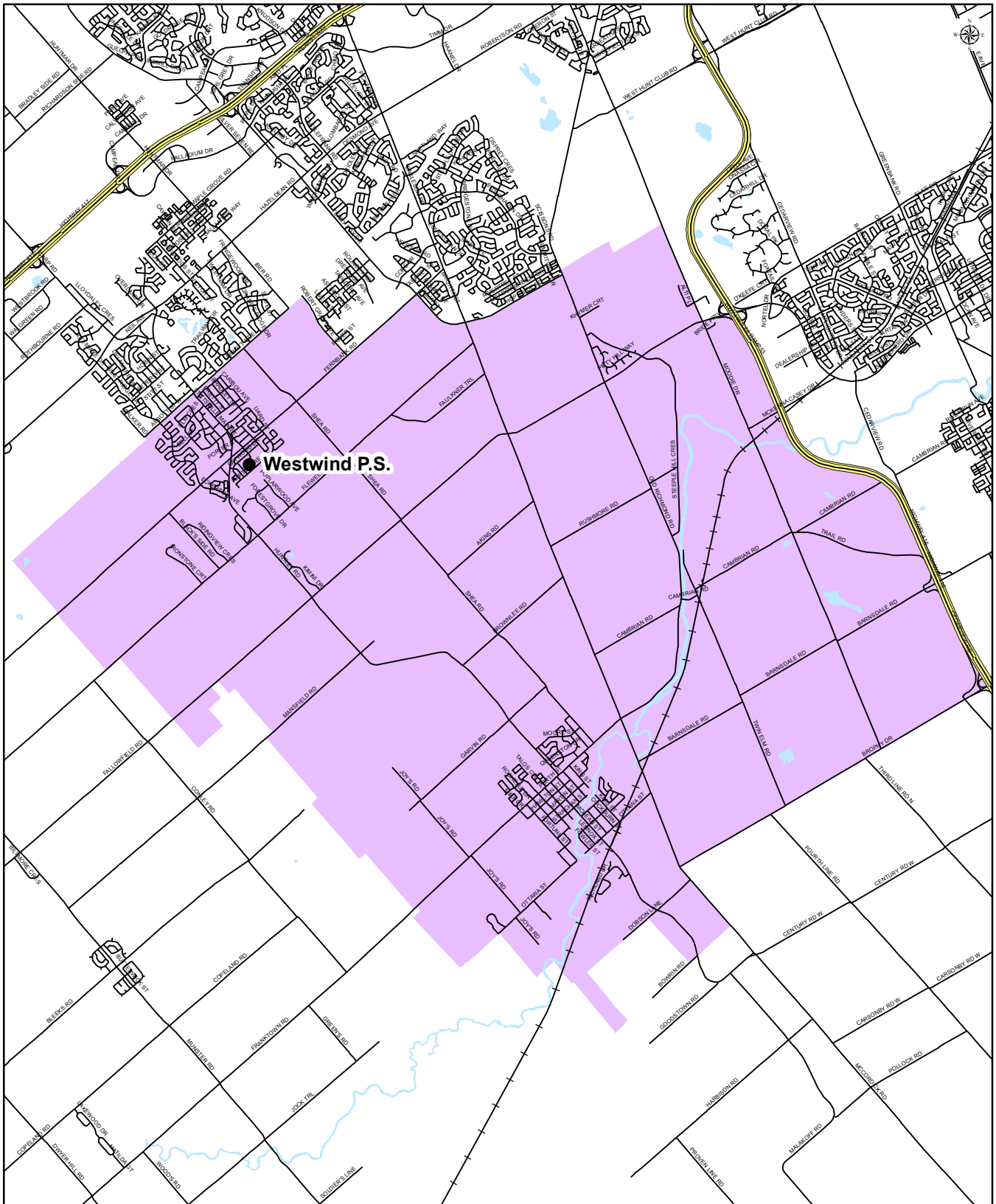
Bridlewood Community Elementary School  
63 Bluegrass Drive  
Kanata, Ontario  
K2M 1G2  
(613) 591-3683

Map is for illustrative purposes only.  
For further information, visit [www.ocdsb.ca](http://www.ocdsb.ca)  
September 2013



**WESTWIND PUBLIC SCHOOL**  
Junior Kindergarten to Grade 6  
Early French Immersion Attendance Boundary

OTTAWA-CARLETON  
DISTRICT SCHOOL BOARD



Westwind Public School  
111 Hartsmere Drive  
Stittsville, Ontario  
K2S 2G1  
(613) 831-7840

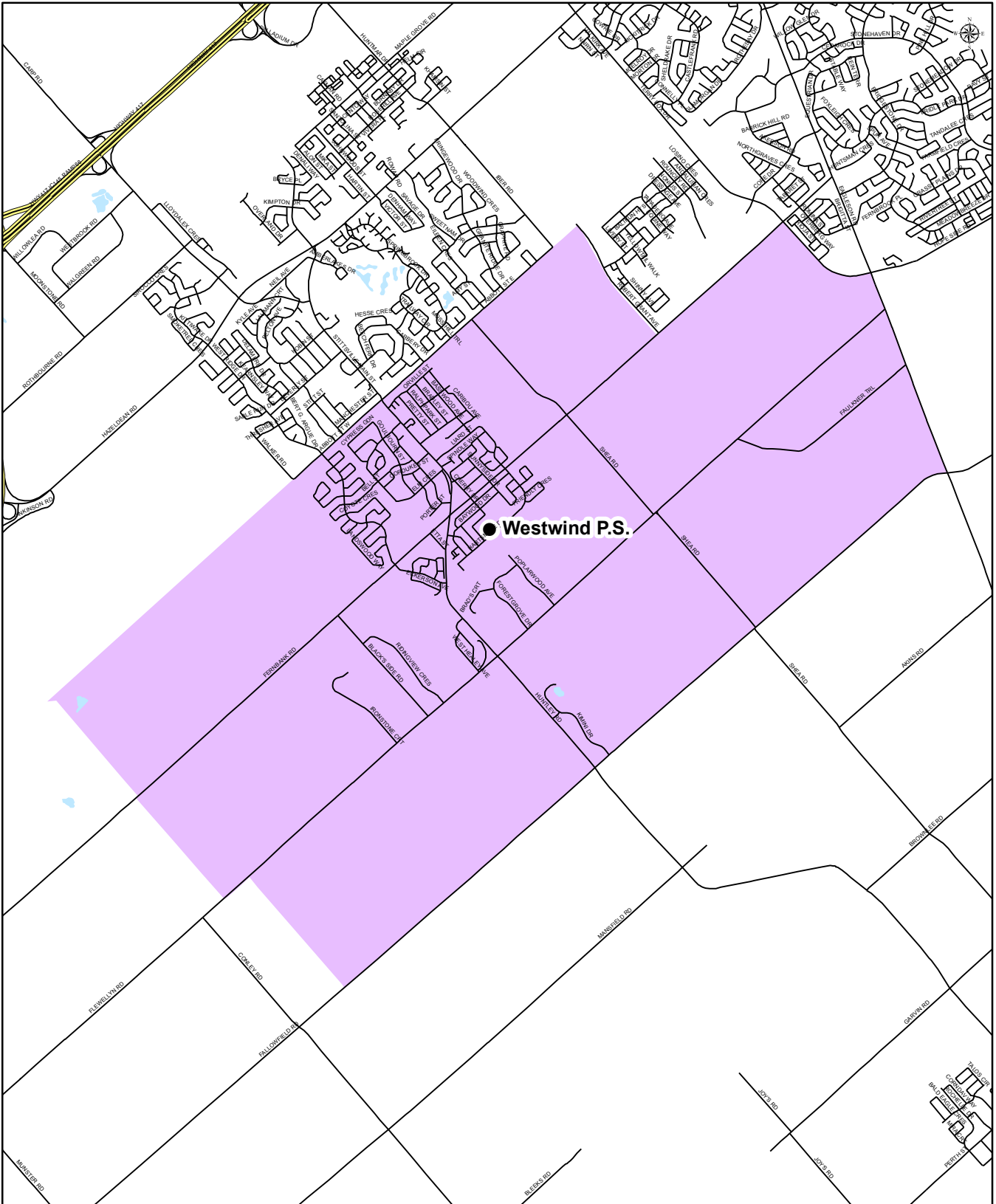
Map is for illustrative purposes only.  
For further information, visit [www.ocdsb.ca](http://www.ocdsb.ca)  
September 2013





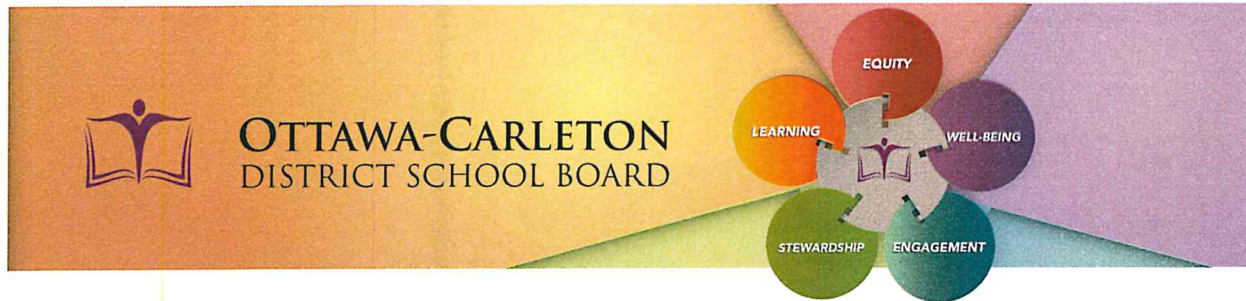
OTTAWA-CARLETON  
DISTRICT SCHOOL BOARD

**WESTWIND PUBLIC SCHOOL**  
Junior Kindergarten to Grade 6  
English Program with Core French Attendance Boundary



Westwind Public School  
111 Hartsmere Drive  
Stittsville, Ontario  
K2S 2G1  
(613) 831-7840

Map is for illustrative purposes only.  
For further information, visit [www.ocdsb.ca](http://www.ocdsb.ca)  
September 2017



**COMMITTEE OF THE WHOLE  
Report No. 19-003**

**15 January 2019**

**New Fernbank Elementary School Study – Consultation Plan Approval**

**Key Contact: Michael Carson, Chief Financial Officer, 613-596-8211  
ext. 8881**

**PURPOSE:**

1. To obtain Board approval of a consultation process and timeline to establish the opening grade structure, program offering, and attendance boundary for a future elementary school to be opened in the Fernbank area of Stittsville.

**CONTEXT:**

2. Fernbank is a growing new development area located within Stittsville. At full buildout, there is expected to be an estimated 11,000 new homes in the community. By the end of 2017 approximately 1,600 of these had been built and occupied. Building permits for an additional 600 new residential units have been issued so far in 2018.

A future requirement for four elementary schools and one secondary school within the Fernbank Community Design Plan (CDP) area was first identified and submitted to the City of Ottawa in 2008. The District is currently in the process of seeking acquisition of the first of the four elementary sites.

Most elementary school students residing within the Fernbank development area are directed to John Young Elementary School (ES) for the kindergarten to grade 6 English Program with Core French (ENG) and Early French Immersion (EFI). The school is located in the southern part of Kanata. It should be noted that there is an underdeveloped area located west of Robert Grant Drive in the Fernbank area where students are currently directed to Westwind Public School (PS) for the kindergarten to grade 6 English Program with Core French and EFI.

Significant accommodation pressures exist at John Young ES. The school's preliminary 31 October 2018 enrolment was 735 students against a school capacity of 547, resulting in a utilization rate of 134%. The school currently requires the use of 11 portables on site for instruction. Enrolment at John Young ES is expected to increase to 800 students for the 2019-2020 school year.



In May of 2018 the Board approved a list of updated capital priorities which ranked the planned opening of a new elementary school in Fernbank for 2020 as its highest priority. A business case for the project will be submitted to the province for consideration once the next Ministry call for capital funding requests is received.

The purpose of this study is to gain approval for the opening grade structure, program offering, and attendance boundary of the new Fernbank elementary school in order to be shovel-ready once capital funding is secured from the province.

## **KEY CONSIDERATIONS:**

3. A general location map for the study area showing future OCDSB school sites situated within Fernbank area, and also including John Young ES, is attached as Appendix A.

John Young ES is located on Morton Drive in the Glen Cairn area of Kanata South. In addition to serving students residing in Fernbank, the school's attendance area also includes the area bounded by Terry Fox Drive to the west, Hazeldean Road to the north, and Eagleson Road to the east (as outlined in Appendix B).

Appendix A provides the general location of all four of the District's future elementary school sites that have been identified in the Fernbank area. Fernbank elementary school site #1 is located at the southwest corner of the extensions of Cope Drive and Rouncey Road. The parcel is 2.84 hectares (approximately 7 acres) in size and is located directly adjacent to a municipal park. This block is the only OCDSB elementary school site in Fernbank which is currently development-ready (serviced and accessible).

In March 2018 capital funding for the construction of a grade 7 to 12 secondary school in Stittsville was approved by the Ministry of Education. The designated site which will accommodate the new school is located within the Fernbank development area. It is expected that a study will commence in the fall of 2019 which will determine the attendance boundary, program offering and opening grade structure of the new secondary school. Future students attending the new Fernbank elementary school would feed to the new secondary school upon its opening.

This study does not qualify as a Pupil Accommodation Review (PAR) under Policy P.118.PLG Pupil Accommodation Review, and will include a different consultative process.

Policy P.118.PLG states that a PAR is not required when the Board is planning the relocation of grades or programs in which the enrolment constitutes less than 50% of the school's total enrolment. Staff does not foresee an attendance boundary for the new Fernbank elementary school which would result in the movement of more than 50% of a school's enrolment.

Although funding for the project has not yet been received from the province, the completion of this study and the setting of a program and attendance boundary for the new Fernbank elementary school will assist the District with being able to open the facility in a timely fashion once that takes place.

## **RESOURCE IMPLICATIONS:**

4. The cost of conducting the study will be managed within existing departmental budgets.

## **COMMUNICATION/CONSULTATION ISSUES:**

5. It is proposed that a working group be formed in early 2019 and that it be comprised of District staff and two representatives from each study school.

In addition to impacting John Young ES, the opening of a new elementary school in the Fernbank development area may affect enrolment at Bridlewood Community ES, the school that is currently designated the Middle French Immersion (MFI) program site for students residing in that part of the Fernbank area.

As indicated earlier, students residing west of Robert Grant Avenue in Fernbank are directed to Westwind PS (kindergarten to grade 6) for the English Program with Core French and Early French Immersion. A. Lorne Cassidy ES is the designated MFI program site for that area.

It is recommended that the working group include representatives from each of the four above-mentioned schools: John Young ES; Bridlewood Community ES; Westwind PS; and A. Lorne Cassidy ES.

Appendix C provides a snapshot of current enrolment and accommodation data for those four schools which are expected to be included in the study process.

Local community associations will also be invited to provide a representative on the working group. Area trustees will be notified and invited to attend all working group meetings.

According to the recommended consultation plan, a study working group will meet on several occasions over the course of the winter and spring of 2019. Meetings have been preliminarily scheduled for the months of February, March, and April 2019. Additional meetings of the working group may be convened should they be necessary.

A public consultation meeting is tentatively scheduled to be held within the local community in May 2019. Final decisions regarding the study are scheduled to be made by Board in June 2019.

A detailed study consultation plan and timeline for the study is attached as Appendix D of this report.



## **STRATEGIC LINKS:**

6. The opening of a new elementary school within the developing Fernbank community will serve to provide students with improved access to learning environments and optimize the use of District resources. This is consistent with stewardship objectives of the 2015-2019 Strategic Plan.

## **RECOMMENDATION:**

THAT the New Fernbank Elementary School Study Consultation Plan and Timeline, attached as Appendix D to Report No. 19-003, be approved.

---

Michael Carson  
Chief Financial Officer  
(ext. 8881)

---

Jennifer Adams  
Director of Education and  
Secretary of the Board

## **APPENDICES**

- Appendix A General Location Map – Study Area
- Appendix B School Attendance Boundary Map – John Young Elementary School
- Appendix C Current Enrolment and Accommodation Chart
- Appendix D Study Consultation Plan and Timeline

# CONSULTATION PLAN

(REFERENCES: POLICY P.110.GOV AND PROCEDURE PR.644.GOV)



	January 2019
<b>PROJECT:</b> (Project name, Letter of Transmittal, etc.)	New Fernbank Elementary School Study – Consultation Plan Approval
<b>CONTACT / PROJECT LEAD</b> (Name, telephone, email):	Michael Carson, Chief Financial Officer, (613) 596-8211 ext. 8881, <a href="mailto:Michael.Carson@ocdsb.ca">Michael.Carson@ocdsb.ca</a>
<b>WHAT?</b>	
<p><b>1. WHAT IS THE PURPOSE OF THE CONSULTATION?</b> (Describe project scope, nature of consultation, decision to be made, and any relevant information)</p> <p><i>The consultation will serve to implement recommendations regarding the opening grade structure, program, and attendance boundary for a new elementary school to be opened in the Fernbank development area once capital funding for the project is received from the Ministry. The consultation process is expected to include four elementary schools: John Young Elementary School; Bridlewood Community Elementary School; Westwind Public School; and A. Lorne Cassidy Elementary School. Other schools may be added as required.</i></p>	
<b>WHY?</b>	
<p><b>2. WHY ARE YOU CONSULTING?</b> (Check all that apply)</p> <p><input checked="" type="checkbox"/> To seek advice, informed opinion or input for consideration prior to decision-making?  <input checked="" type="checkbox"/> To share information and/or create awareness about a subject/potential recommendations/decision yet to be made?  <input type="checkbox"/> To share information and awareness about a subject/recommendation/decision that has been made?  <input type="checkbox"/> Other? (Please explain)</p>	
<p><b>3. HOW DOES THIS CONSULTATION LINK TO THE OCDSB STRATEGIC PLAN, DISTRICT IMPROVEMENT PLAN, BUDGET, ANNUAL DISTRICT GOALS AND OBJECTIVES AND/OR RELEVANT MINISTRY / OCDSB POLICIES OR PROCEDURES (if applicable)?</b></p> <p><i>The consultation will seek to recommend an opening grade structure, program, and attendance boundary for a new Fernbank elementary school.</i></p> <p><i>The opening of a new elementary school within the developing Fernbank Community will serve to provide students with improved access to learning environments and optimize the use of District resources. This is consistent with the stewardship objectives of the 2015-2019 Strategic Plan.</i></p>	



# CONSULTATION PLAN

(REFERENCES: POLICY P.110.GOV AND PROCEDURE PR.644.GOV)

## WHO?

**4. WHO WILL BE CONSULTED? (Key stakeholders) (Check all that apply)**

**OCDSB Community**

- Students
- Parents/guardians
- School council(s)
- Ottawa Carleton Assembly of School Councils
- Advisory committees (Specify below)
- Special Education Advisory Committee, etc
- Other \_\_\_\_\_

Please describe or expand on who will be consulted and any partners in the consultation:

**Internal to OCDSB**

- Trustees
- Superintendents
- Principals and/or Vice-principals
- Managers
- District staff
- Federations
- Other \_\_\_\_\_

**External / Other (please identify)**

- Agencies/associations \_\_\_\_\_
- Community groups \_\_\_\_\_
- General Public \_\_\_\_\_
- Other governments \_\_\_\_\_
- Other \_\_\_\_\_

**5. HAVE ANY OF THESE STAKEHOLDERS BEEN INVOLVED IN INFORMAL CONSULTATION AS PART OF THE DEVELOPMENT OF THIS PLAN?**

In accordance with section 4.3 of Policy P.110.GOV, it is expected that informal consultation has taken place with representative stakeholders to obtain their suggestions prior to finalizing this plan. Please describe below. (If this informal consultation did not take place, explain why it was not feasible.)

*Yes, the local Trustees, the Superintendent of Instruction for involved schools, and the Chief Financial Officer.*

## HOW?

**6. HOW WILL STAKEHOLDERS BE MADE AWARE OF THIS CONSULTATION PROCESS? (Check all that apply)**

- Media advertisement (print and/or radio)
- Letter distribution
- School council(s)
- Ottawa Carleton Assembly of School Councils
- School newsletter
- Website (schools and/or OCDSB sites)
- Other \_\_\_\_\_

Please describe how stakeholders will be made aware of the consultation process and any special requirements for consultation (translation, alternate formats, etc)?

**7. HOW WILL THE CONSULTATION BE CARRIED OUT? (Check all that apply)**

- Focus groups
- Interviews
- Mail-out or email circulation
- Open houses / workshops / cafes
- School council(s)
- Please describe:
- Ottawa Carleton Assembly of School Councils
- Public meetings
- Survey / questionnaire
- Web-based notice / Web-based comments
- Other \_\_\_\_\_





# CONSULTATION PLAN

(REFERENCES: POLICY P.110.GOV AND PROCEDURE PR.644.GOV)

## WHEN?

**8. PROJECT PLAN FOR CONSULTATION (KEY ACTIVITIES AND COMMUNICATIONS)<sup>1</sup>:**  
 i.e. Identify plan approval dates; Timelines for awareness of consultation; Specific consultation initiatives; Timelines for analysis;  
 Date for Committee/Board deliberation; Evaluation of consultation

<b>TARGETTED DATE FOR FINAL DECISION:</b>	<b>January 2019</b>	<b>NOTES**</b>
<b>PROJECTED DATE(S)</b>	<b>ACTIVITY/MILESTONE</b>	
January 2019	Board Approval of Consultation Plan and Timeline	
Late January 2019	Formation of Working Group	
February 2019	Working Group Meeting #1	
March 2019	Working Group Meeting #2	
April 2019	Working Group Meeting #3	
May 2019	Public Consultation Meeting	
June 2019	Regular Committee of the Whole Meeting – Presentation, Debate, and Recommendations	
June 2019	Regular Board Meeting – Final Decisions	

- \*\*In filling out this chart, please note:**
- the materials, reports or resources that will be distributed to stakeholders, either in advance or at the session;
  - any constraints such as necessary deadlines, availability of stakeholders; and
  - the timelines for communicating the outcome/related decisions reached to those consulted.

<sup>1</sup> Outline provides information on the minimal number of activities proposed, which may be amended to intensify the process if required. Further information on the overall project/initiative and the specific consultation plan and process can be provided in the Letter of Transmittal to Board.  
 OCDSB Form 644: Consultation Plan (April 2009)

<p><b>9. HOW WILL THE RESULTS OF THE CONSULTATION AND THE RATIONALE OF THE FINAL DECISION BE COMMUNICATED TO ALL CONTRIBUTORS TO THE PROCESS?</b> (Check all that apply)</p>	<p> <input checked="" type="checkbox"/> Email circulation  <input checked="" type="checkbox"/> Letter distribution  <input type="checkbox"/> Letter of Transmittal to committee/Board  <input type="checkbox"/> School / principal communications / newsletter  <input checked="" type="checkbox"/> Website (schools and/or OCDSB sites)  <input type="checkbox"/> Media reports  <input type="checkbox"/> Other         </p> <p>Please describe:</p>
<b>OTHER</b>	
<p><b>10. ESTIMATED COSTS FOR THE CONSULTATION*</b> (i.e. advertising, facilities, translation, materials):</p>	<p><i>Consultation costs will be managed within existing departmental budgets.</i></p>
<p><i>* Note that the consulting body bears responsibility for the costs of the consultation.</i></p>	
<p><b>11. EVALUATION:</b> Please specify the method(s) you plan to use to assess the effectiveness and success of this consultation process. (e.g., outcomes/results, satisfaction of participants, debriefs, questionnaires/evaluation sheet collected from participants, peer review, school council meeting discussion with date, etc.)</p>	

# February 2019

Sun	Mon	Tue	Wed	Thu	Fri	Sat
					1	2
3	4	5	6	7	8	9
10	11	12	13	14	15	16
17	18	19	20	21	22	23
24	25	26	27	28		



# March 2019

Sun	Mon	Tue	Wed	Thu	Fri	Sat
					1	2
3	4	5	6	7	8	9
10	11	12	13	14	15	16
17	18	19	20	21	22	23
24	25	26	27	28	29	30
31						

# April 2019

Sun	Mon	Tue	Wed	Thu	Fri	Sat
	1	2	3	4	5	6
7	8	9	10	11	12	13
14	15	16	17	18	19	20
21	22	23	24	25	26	27
28	29	30				

# May 2019

Sun	Mon	Tue	Wed	Thu	Fri	Sat
			1	2	3	4
5	6	7	8	9	10	11
12	13	14	15	16	17	18
19	20	21	22	23	24	25
26	27	28	29	30	31	

# June 2019

Sun	Mon	Tue	Wed	Thu	Fri	Sat
						1
2	3	4	5	6	7	8
9	10	11	12	13	14	15
16	17	18	19	20	21	22
23	24	25	26	27	28	29
30						