



OTTAWA-CARLETON
DISTRICT SCHOOL BOARD

New Half Moon Bay Elementary School

Grade, Program Offering and Attendance Boundary Review



Information Package for Public Consultation

April 28 2021 to May 11, 2021

Table of Contents

	Page
1. Timelines	1
2. Location Map	2
3. Introduction and Overview	3
4. Advisory Committee	3
5. Considerations	4-5
6. Proposals for Consideration	6
7. Option A	7-10
8. Option A1	11-15
9. Other Options Considered	16
10. Next Steps	17
11. Supplementary Information	18-23
<ul style="list-style-type: none">• Half Moon Bay P.S. Attendance Boundary Map• Cedarview Middle School Attendance Boundary Map• Status Quo Projected Enrolments<ul style="list-style-type: none">○ Half Moon Bay P.S. / Cedarview M.S.• Summary Chart of Options Considered	
12. Comment Sheet	24

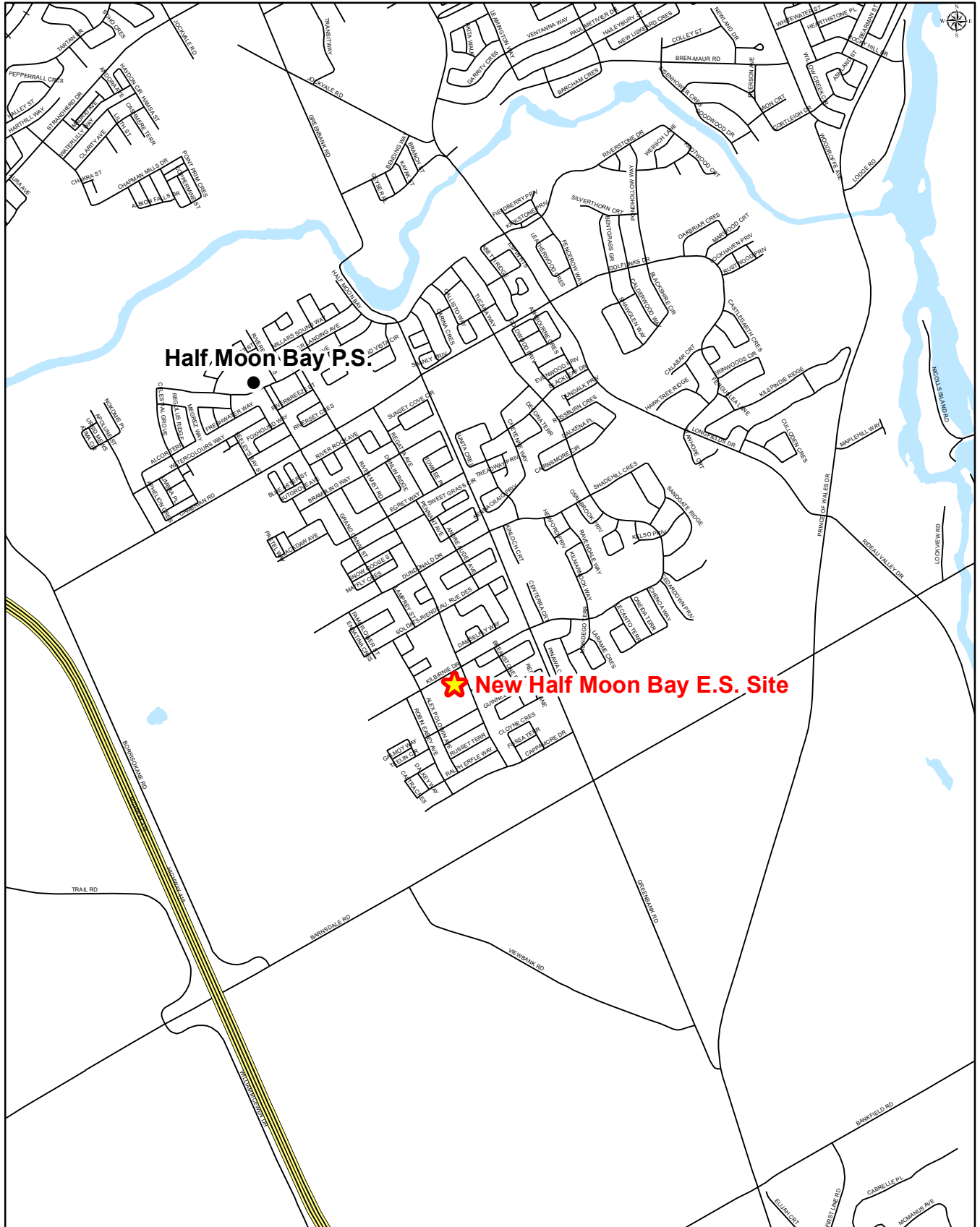
New Half Moon Bay Elementary School Consultation Timeline

Activity	Date
Notice of Intention to Commence Study and Approve Study and Timeline	
➤ Committee of the Whole Meeting (online format)	14 November 2020
➤ Board Approval of Study Consultation Plan/Timeline (virtual format)	15 December 2020
Consultative Stage	
➤ Formation of the Advisory Group	January 2021
➤ Advisory Group Meeting # 1 (virtual 5:30 – 7:30 pm)	25 February 2021
➤ Advisory Group Meeting # 2 (virtual 5:30 – 7:30 pm)	18 March 2021
➤ Advisory Group Meeting # 3 (virtual 4:30 – 5:30 pm)	31 March 2021
➤ Public Consultation Period (Online format)	28 April – 11 May 2021
Recommendation and Decision Making Stage	
➤ Regular Committee of the Whole Meeting – Presentation of Staff Recommendation Report (potentially an online format)	June 2021
➤ Regular Board Meeting – Final Decisions (potentially an online format)	June 2021
Communication and Implementation Stage	
➤ Communication of Board Approved Decision	June 2021
➤ Implementation of Board Approved Decision	September 2022

Location Map



New Half Moon Bay Elementary School Site





New Half Moon Bay Elementary School Accommodation Review

Introduction and Overview

April 2021

Dear Students/Parents/Guardians/Staff and Community Partners,

In July 2020, the Ottawa-Carleton District School Board received notice of provincial funding for the construction of a second elementary school in the Half Moon Bay area.

In anticipation of this funding, the Board acquired a 7.6 acre site located at the south west intersection of River Mist Road and Kilbirnie Drive. Construction of the school will commence in the coming months and is tentatively scheduled for a September 2022 opening, pending construction timelines and approvals. The school will have a capacity of 674 pupil places, and it will offer full day kindergarten with an extended day - child care program.

Given that the existing attendance boundary for Half Moon Bay Public School mirrors the community's well defined geography, the new school boundary is anticipated to be formed from within the existing community.

Advisory Committee Meetings

On December 15, 2020, the Board approved a timeline and consultative approach in order to develop options relating to the grade configuration, program offering and attendance boundary for the new Half Moon Bay elementary school. The consultative plan consisted of three meetings of an Advisory Committee, composed of School Principals and School Council representatives from both Half Moon Bay Public School and Cedarview Middle School. A representative from the local community association as well as Board staff and area Trustees were also in attendance.

Over the past several months, the Advisory Committee considered several potential accommodation options for the new elementary school.

The options were considered within the context of key objectives for the study such as the desire to maintain viable programs, balanced enrolment and school utilization while providing students with local access to programs.

The following factors/considerations were points of discussion for the Advisory Committee and have ultimately served to guide the development of the two proposals that we are seeking your comment on during this consultation stage.

Considerations

Regular English program enrolment

Not unlike trends in schools across the District, there has been a marked increase in the demand for Early French Immersion (EFI) programming, which has generally resulted in lower regular English (ENG) program enrolments.

A basic premise of the Advisory Committee however, has been that the ENG program should also be offered at the new Half Moon Bay elementary school.

This dual track program English/Early French Immersion (ENG/EFI) program offering is consistent with all other elementary schools serving students in the larger Barrhaven community. As well, the size of the ENG program currently at Half Moon Bay Public School is of a sufficient magnitude that it can be split between the two elementary schools. With a dual track program offering, siblings who may attend different programs and/or who later switch programs, are able to do so without changing schools.

Middle French Immersion Program

The Advisory Committee considered the possibility of the introduction of a new Middle French Immersion (MFI) program at one of the Half Moon Bay area schools. A review of the current MFI programs in the Barrhaven area, suggests that there is not yet a sufficient critical mass of students to support a third MFI program in the Barrhaven area. Given that the MFI program is fairly new at Barrhaven Public School, it was felt that the program needs time to mature and gain strength over time, before additional program sites are considered.

Intermediate Program

The Advisory Committee considered the possibility of introducing an intermediate program (grade 7-8) at either one or both of the Half Moon Bay area schools. With the introduction of an intermediate program, enrolment would soon exceed capacity and hasten the need for portables. Cedarview Middle School would also see a significant reduction in its enrolment.

Regardless, the Advisory Committee did want an Option shown that reflects the impact of an intermediate program offering for your comment.

Residential Development

In the early 2000's the City of Ottawa initiated the development of concept plans for the future Half Moon Bay Community in conjunction with the City's Official Plan. During the consultation process, the OCDSB outlined its future need for three (3) elementary school sites. In 2006, the Barrhaven South Community Design Plan (CDP) was approved by the City and later in 2018 the Barrhaven South Expansion Area CDP was approved. These two CDP plans, envisioned over 8,600 dwelling units for the future community. With approx. 7100 units built to date, the area is now beginning to approach build out.

With over 1500 units remaining, more than half of these are located within the new school boundary area.

Co-terminous School Board Presence

Within the Half Moon Bay Community, the Ottawa Catholic School Board has two existing JK-6 elementary schools in the community – St Cecelia which opened in 2013 and St Benedict in 2016.

- The OCSB recently received notice of provincial funding for a third elementary school, tentatively scheduled for a September 2023 opening.

The French Catholic School Board also has a presence in the community with the opening of école Sainte Kateri a JK-6 elementary school in 2013.

Staff continue to monitor both development trends and the plans of our co-terminous boards in the context of our accommodation needs in the growing Half Moon Bay community.

Following discussion of the issues and considerations, the Advisory Committee has, in principle, endorsed the presentation of two Options for the purpose of receiving comment from the school community.

Proposals for your Consideration

Two accommodation options are provided for your comment; both options significantly reduce the overcrowding at Half Moon Bay Public School and reduce the reliance on portable classrooms.

Option A Both Half Moon Bay Public School and New Half Moon Bay Elementary School offer a JK-6 ENG/EFI program.

The JK-6 ENG/EFI attendance boundary line is generally along Cambrian Road.

The new elementary school would open with a JK-5 grade structure in September 2022, phasing in grade 6 the following year.

Option A1 Same as Option A except that both schools offer an intermediate program. Both Half Moon Bay Public School and New Half Moon Bay Elementary School would offer a JK-8 ENG/EFI program.

The JK-8 ENG/EFI attendance boundary line is generally along Cambrian Road.

The new elementary school would open with a JK-5 grade structure in September 2022, with the phase-in of grade 6 the following year 2023, with both schools then phasing in Grade 7 by 2024 and Grade 8 by 2025.

These Options are provided in full detail beginning on the following pages of this Information Package.

Staff Comment

Staff do have a preference for Option A wherein both schools are proposed to offer a JK-6 ENG/EFI grade structure and program offering. In this Option, both schools would likely remain under 100% utilization by 2026.

Each school would also have some buffer for future growth providing area families with some stability and certainty in the medium term.

An intermediate program can be considered at a later time, and be implemented fairly quickly should both enrolment numbers warrant and space available. In the interim, staff would have the opportunity to monitor enrolments and accommodation, as development in the community proceeds.

Cedarview Middle School would continue to house intermediate program students from the Half Moon Bay area and be able to offer a robust intermediate program with a growing enrolment in the 800 range by 2026.

Option A - Accommodation Impact

Description:

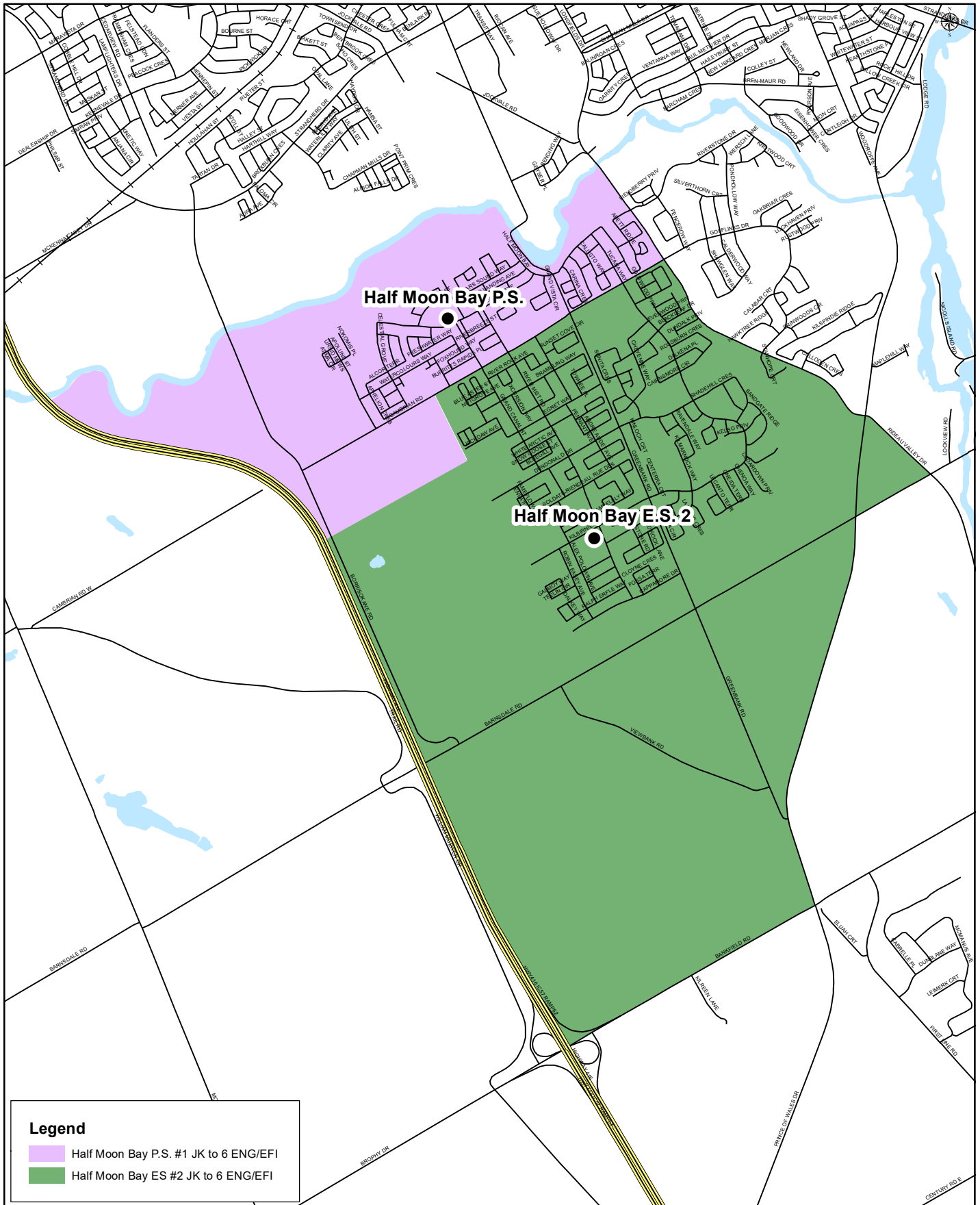
Both **Half Moon Bay Public School** and **New Half Moon Bay Elementary School** offer a JK-6 ENG/EFI program.

Half Moon Bay Public School Attendance boundary is generally divided along Cambrian Rd east/west of Greenbank Rd. The new subdivision located west of the re-aligned Greenbank Rd is directed to Half Moon Bay Public School

Issues & Considerations

- The New Half Moon Bay Elementary School would open as a JK-5 in September 2022 with grade 6 phasing in the following year.
 - The Grade 5 students at Half Moon Bay Public School in 2021/2022 school year would remain at the school for Grade 6 for September 2022.
 - The Grade 5's at the new school in September 2022 would have at least 2 years in the new school before heading to Cedarview Middle School for Grades 7-8.
- Enrolment at both Half Moon Bay Public School and at the new Half Moon Bay Elementary School will be in the 500 range in 2022.
 - By 2026, the new school's enrolment is projected to be in the 645 range, while enrolment at Half Moon Bay Public School is projected to be 530 students.
- With two (2) schools in the community, more students are able to walk to their designated school.
- Provides for equity of program access, locally.
- Considers future development within each school boundary with each school having space for additional growth.

Option A Junior Kindergarten to Grade 6 English Program with Core French and Early French Immersion Attendance Boundary



New Half Moon Bay Elementary School

Option A - Accommodation Impact

Description: Half Moon Bay Public School and New Half Moon Bay Elementary School both offer a JK-6 ENG/EFI program. The boundary line is revised to extend along Cambrian Road, east/west of the existing Greenbank Road with the new subdivision south/west of the future re-aligned Greenbank Road being directed to Half Moon Bay Public School.

2022 - New Half Moon Bay ES Opens as a JK-5

School	Capacity	Prog	JK	SK	1	2	3	4	5	6	7	8	SE	Total	UF %
Half Moon Bay Public School	674	KGTN	49	54										103	80.0%
		ENG			12	17	24	22	25	70				170	
		EFI			45	42	43	40	27	69				266	
		Total	49	54	57	59	67	62	52	139				539	
New Half Moon Bay Elementary School	674	KGTN	65	66										131	76.9%
		ENG			19	18	23	25	27					112	
		EFI			48	45	60	67	55					275	
		Total	65	66	67	63	83	92	82	0				518	

2023

School	Capacity	Prog	JK	SK	1	2	3	4	5	6	7	8	SE	Total	UF %
Half Moon Bay Public School	674	KGTN	50	54										104	72.4%
		ENG			12	17	23	29	27	30				138	
		EFI			47	45	40	44	40	30				246	
		Total	50	54	59	62	63	73	67	60				488	
New Half Moon Bay Elementary School	674	KGTN	74	70										144	91.1%
		ENG			20	21	21	28	28	32				150	
		EFI			54	47	42	57	63	57				320	
		Total	74	70	74	68	63	85	91	89				614	

2024

School	Capacity	Prog	JK	SK	1	2	3	4	5	6	7	8	SE	Total	UF %
Half Moon Bay Public School	674	KGTN	50	55										105	76.6%
		ENG			12	17	23	28	34	32				146	
		EFI			47	47	43	41	44	43				265	
		Total	50	55	59	64	66	69	78	75				516	
New Half Moon Bay Elementary School	674	KGTN	77	79										156	92.7%
		ENG			20	22	24	26	31	33				156	
		EFI			59	53	44	39	53	65				313	
		Total	77	79	79	75	68	65	84	98				625	

2025

School	Capacity	Prog	JK	SK	1	2	3	4	5	6	7	8	SE	Total	UF %
Half Moon Bay Public School	674	KGTN	50	55										105	78.3%
		ENG			12	17	23	28	33	39				152	
		EFI			47	47	45	44	41	47				271	
		Total	50	55	59	64	68	72	74	86				528	

New Half Moon Bay Elementary School	674	KGTN	83	82										165	93.6%
		ENG			21	22	25	29	29	36				162	
		EFI			64	58	51	41	35	55				304	
		Total	83	82	85	80	76	70	64	91				631	

2026

School	Capacity	Prog	JK	SK	1	2	3	4	5	6	7	8	SE	Total	UF %
Half Moon Bay Public School	674	KGTN	51	55										106	78.6%
		ENG			12	17	23	28	33	38				151	
		EFI			47	47	45	46	44	44				273	
		Total	51	55	59	64	68	74	77	82				530	

New Half Moon Bay Elementary School	674	KGTN	85	87										172	95.7%
		ENG			22	23	25	30	32	34				166	
		EFI			66	63	56	48	37	37				307	
		Total	85	87	88	86	81	78	69	71				645	

Option A1 - Accommodation Impact

Description:

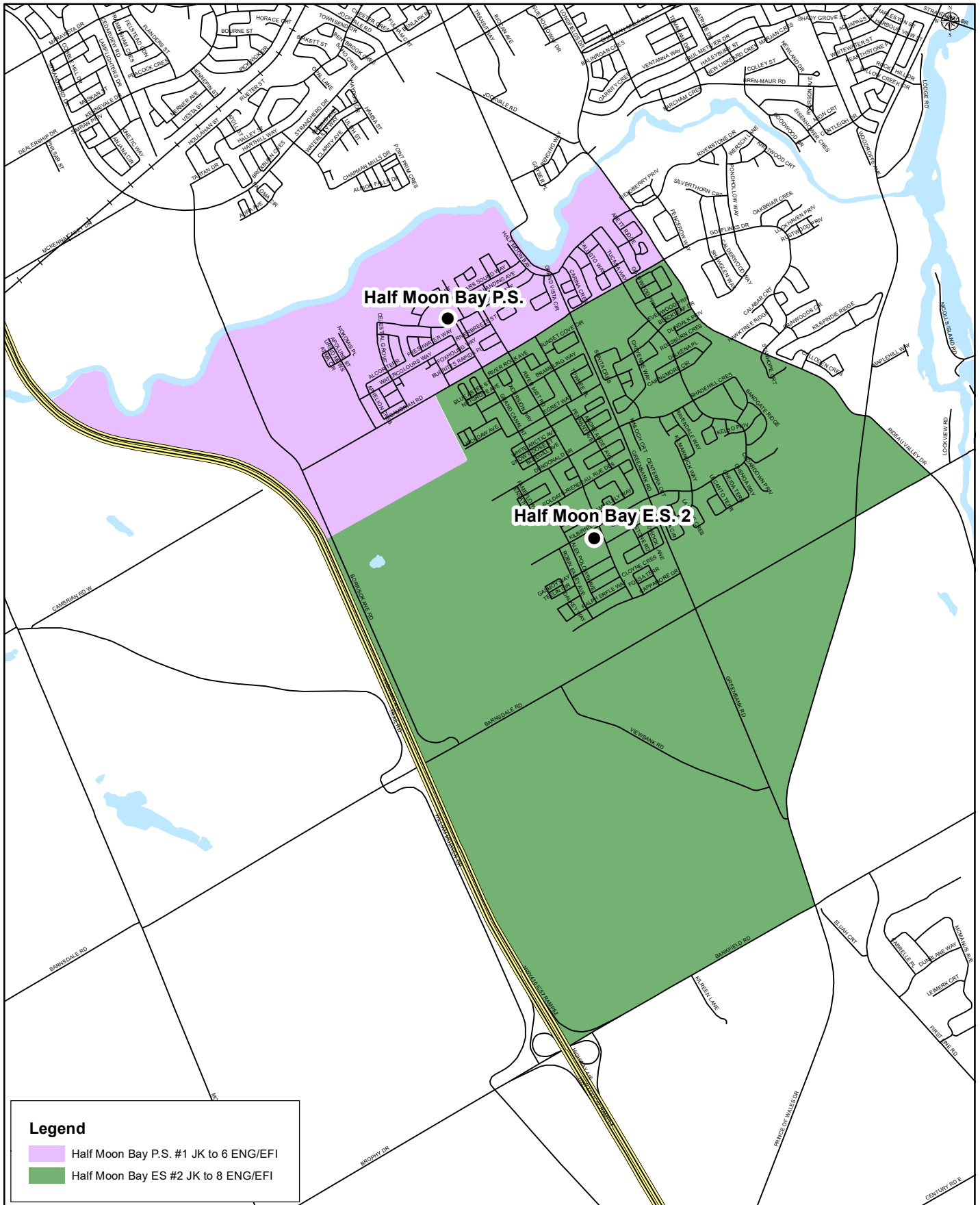
Same as Option A, except that both Half Moon Bay Public School and New Half Moon Bay Elementary School also offer an Intermediate program JK-8 ENG/EFI.

Half Moon Bay Public School Attendance boundary is generally divided along Cambrian Road east/west of Greenbank Rd. The new subdivision located west of the re-aligned Greenbank Rd is directed to Half Moon Bay Public School.

Issues & Considerations

- New school would open as a JK-5 in September 2022, with grades 6-7-8 phasing in one grade per year thereafter.
- A phase-in of the intermediate cohort would commence in 2024 with the phase-in grade 7 at both schools, and grade 8 in 2025.
- Intermediate (Grade 7-8) cohort is divided between the two schools. With 2 schools in the community, more students are able to walk to their designated school.
- Both schools would exceed 100% utilization and likely requires portables.
- Provides for equity of program access, locally.
- Following the phase out of Half Moon Bay area intermediate students from Cedarview Middle School, enrolment at Cedarview Middle School with a capacity of 711 pupil places, is reduced to 430 students or approx. 60% utilization by 2025.

Option A1 Junior Kindergarten to Grade 8 English Program with Core French and Early French Immersion Attendance Boundary



New Half Moon Bay Elementary School

Option A1 - Accommodation Impact

Description: Half Moon Bay Public School and New Half Moon Bay Elementary School both offer a JK-8 ENG/EFI program. The boundary line is revised to extend along Cambrian Road, east/west of the existing Greenbank Road with the new subdivision south/west of the future re-aligned Greenbank Road being directed to Half Moon Bay Public School.

2022 - New Half Moon Bay ES Opens as a JK-5

School	Capacity	Prog	JK	SK	1	2	3	4	5	6	7	8	SE	Total	UF %
Half Moon Bay Public School	674	KGTN	49	54										103	80.0%
		ENG			12	17	24	22	25	70				170	
		EFI			45	42	43	40	27	69				266	
		Total	49	54	57	59	67	62	52	139	0	0		539	
New Half Moon Bay Elementary School	674	KGTN	65	66										131	76.9%
		ENG			19	18	23	25	27					112	
		EFI			48	45	60	67	55					275	
		Total	65	66	67	63	83	92	82	0	0	0		518	

2023

School	Capacity	Prog	JK	SK	1	2	3	4	5	6	7	8	SE	Total	UF %
Half Moon Bay Public School	674	KGTN	50	54										104	72.4%
		ENG			12	17	23	29	27	30				138	
		EFI			47	45	40	44	40	30				246	
		Total	50	54	59	62	63	73	67	60	0	0		488	
New Half Moon Bay Elementary School	674	KGTN	74	70										144	91.1%
		ENG			20	21	21	28	28	32				150	
		EFI			54	47	42	57	63	57				320	
		Total	74	70	74	68	63	85	91	89	0	0		614	

2024 - Phase In of Grade 7 and Reduced Gr 7's at Cedarview MS

School	Capacity	Prog	JK	SK	1	2	3	4	5	6	7	8	SE	Total	UF %
Half Moon Bay Public School	674	KGTN	50	55										105	85.9%
		ENG			12	17	23	28	34	32	33			179	
		EFI			47	47	43	41	44	43	30			295	
		Total	50	55	59	64	66	69	78	75	63	0		579	

New Half Moon Bay Elementary School	674	KGTN	77	79										156	107.1%
		ENG			20	22	24	26	31	33	36			192	
		EFI			59	53	44	39	53	65	61			374	
		Total	77	79	79	75	68	65	84	98	97	0		722	

Cedarview Middle School	711	ENG									79	176	4	259	82.8%
		EFI									106	162		268	
		MFI									23	14		37	
		G.ENG									12	13		25	
		Total									220	365	4	589	

2025 - Phase In Completed both schools JK-8

School	Capacity	Prog	JK	SK	1	2	3	4	5	6	7	8	SE	Total	UF %
Half Moon Bay Public School	674	KGTN	50	55										105	99.1%
		ENG			12	17	23	28	33	39	34	35		221	
		EFI			47	47	45	44	41	47	43	28		342	
		Total	50	55	59	64	68	72	74	74	86	77	63	668	

New Half Moon Bay Elementary School	674	KGTN	83	82										165	122.3%
		ENG			21	22	25	29	29	36	37	34		233	
		EFI			64	58	51	41	35	55	69	53		426	
		Total	83	82	85	80	76	70	64	91	106	87		824	

Cedarview Middle School	711	ENG									92	87	4	183	60.6%
		EFI									77	112		189	
		MFI									19	15		34	
		G.ENG									12	13		25	
		Total									200	227	4	431	

2026

School	Capacity	Prog	JK	SK	1	2	3	4	5	6	7	8	SE	Total	UF %
Half Moon Bay Public School	674	KGTN	51	55										106	103.3%
		ENG			12	17	23	28	33	38	41	37		229	
		EFI			47	47	45	46	44	44	47	41		361	
		Total	51	55	59	64	68	74	77	82	88	78		696	
New Half Moon Bay Elementary School	674	KGTN	85	87										172	124.6%
		ENG			22	23	25	30	32	34	40	35		241	
		EFI			66	63	56	48	37	37	59	61		427	
		Total	85	87	88	86	81	78	69	71	99	96		840	
Cedarview Middle School	711	ENG									93	99	4	196	65.5%
		EFI									122	83		205	
		MFI									21	19		40	
		G.ENG									12	13		25	
		Total									248	214	4	466	

Other Options Considered

Original Options A and A1

The original JK-6 and JK-8 attendance boundary options considered by the Advisory Committee assumed a boundary line division along Cambrian Road and then along Brambling Way. The Brambling Way division line sought to achieve a balanced split of the regular ENG program enrolment between the two elementary schools.

The Advisory Committee believed that this boundary line was arbitrary and that it would be more prudent to use a major road such as Cambrian Rod as a division line. As such and in this case, students would not have to cross a major road to get to school. As well, the impact on the regular program enrolment numbers was not deemed to be significant. As a result this boundary line option was not pursued further.

Original Option B

This Option considered maintaining the regular ENG program for the community at Half Moon Bay Public School along with an immersion program serving the local area, JK-6 ENG/EFI. The new Half Moon Bay Elementary school would offer a local JK-6 EFI program and offer a Grade 7-8 ENG/EFI program.

This program configuration is not a typical model and has been implemented in other areas of the district to address local accommodation issues, particularly where the size of the ENG program is small. A large number of siblings of students attending the ENG program from the new school boundary area would be split between schools. While enrolment between the two schools are generally balanced, this option was not pursued by the Advisory Committee as it unnecessarily split siblings with different program choices.

Option C

The Advisory Committee considered a JK-3 and 4-8 grade and program division for the two Half Moon Bay area elementary schools as follows:

Half Moon Bay P.S. as a JK-3 ENG/EFI
New Half Moon Bay Elementary School as a Gr 4-8 ENG/EFI

The JK-3/4-8 grade structure is not a typical school configuration model and has been implemented in other areas of the District to address local accommodation issues. This model was not pursued by the Advisory Committee as a large number of families who have children in different programs, would be split between the two schools. As well, this model would not make effective nor optimal use of school facility resources and as such, was deemed unnecessary.

Please also refer to Supplementary Information Section for this list of Options Considered

Timeline and Next Steps

Although you are encouraged to provide comment/input over the online consultation period of April 28 – May 11, 2021, feedback is also welcome throughout the Trustee-Board decision-making process. All input received will be shared in its original form with Trustees.

Should you wish to have your comments considered in time for the staff recommendation report, comments would be appreciated by May 11th.

Details for the provision of feedback are provided on the comment sheet on the last page.

Following the two week consultation period, staff will review the feedback and submit a recommendation report to the Board's Committee of the Whole for its meeting, scheduled for **June 8, 2021**. The recommendation report will be posted to the Board's Website in early June.

Delegations from the Public and Trustee debate on the recommendations will take place that night. Final decisions by the Board are scheduled to take place on the evening of **June 21, 2021**.

Thank you for your continued partnership and interest in addressing local accommodation matters and we look forward to your comments.

Supplementary Information

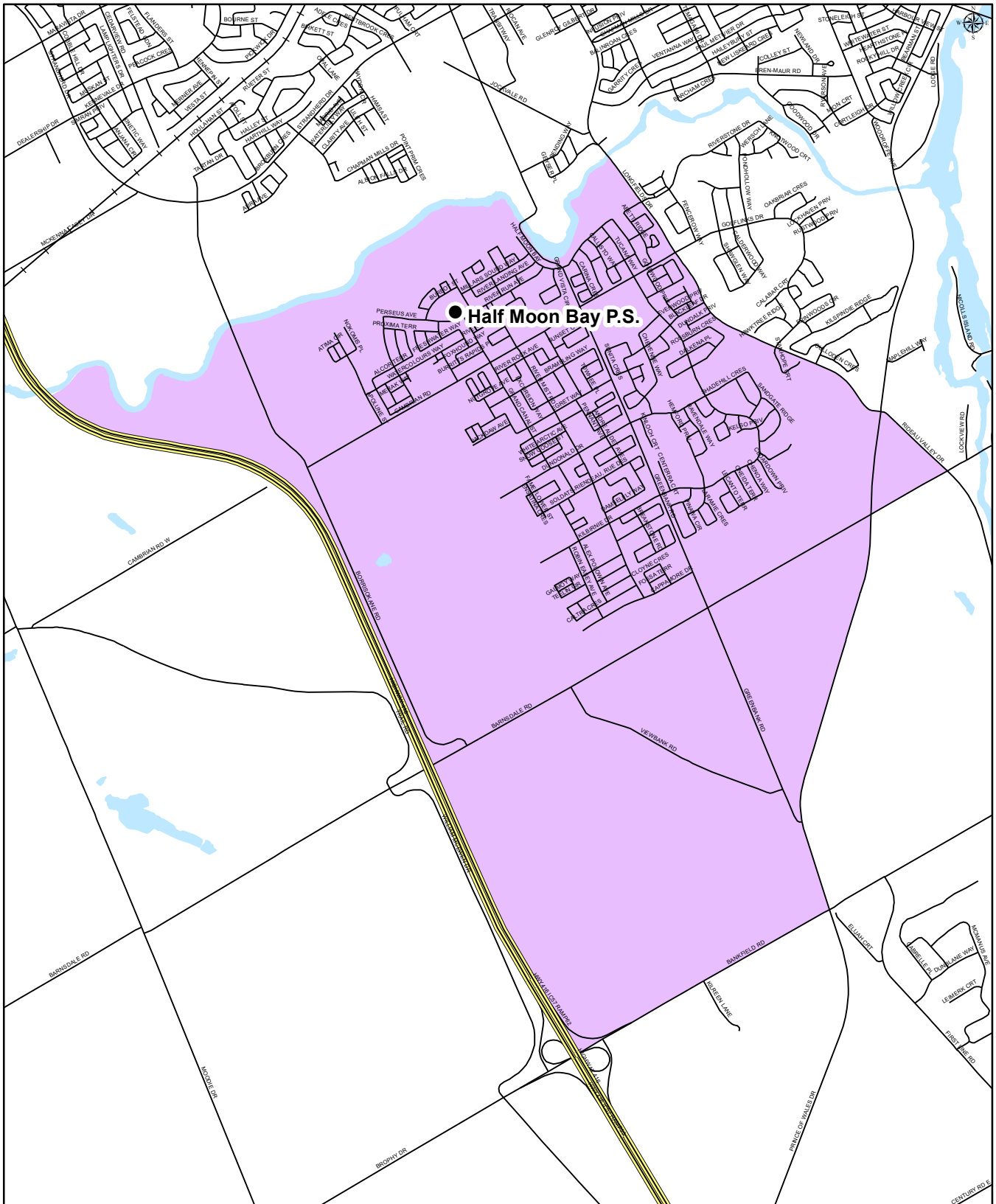
- Half Moon Bay P.S. Attendance Boundary Map
- Cedarview Middle School Attendance Boundary Map
- Status Quo Projected Enrolments
 - Half Moon Bay P.S./ Cedarview M.S.
- Summary Chart of Options Considered



HALF MOON BAY PUBLIC SCHOOL
Junior Kindergarten to Grade 6

OTTAWA-CARLETON
DISTRICT SCHOOL BOARD

English Program with Core French and Early French Immersion Attendance Boundary



Half Moon Bay Public School
3525 River Run Avenue
Nepean, Ontario
K2J 6E2
(613) 692-5454

Map is for illustrative purposes only.
For further information, visit www.ocdsb.ca
September 2019

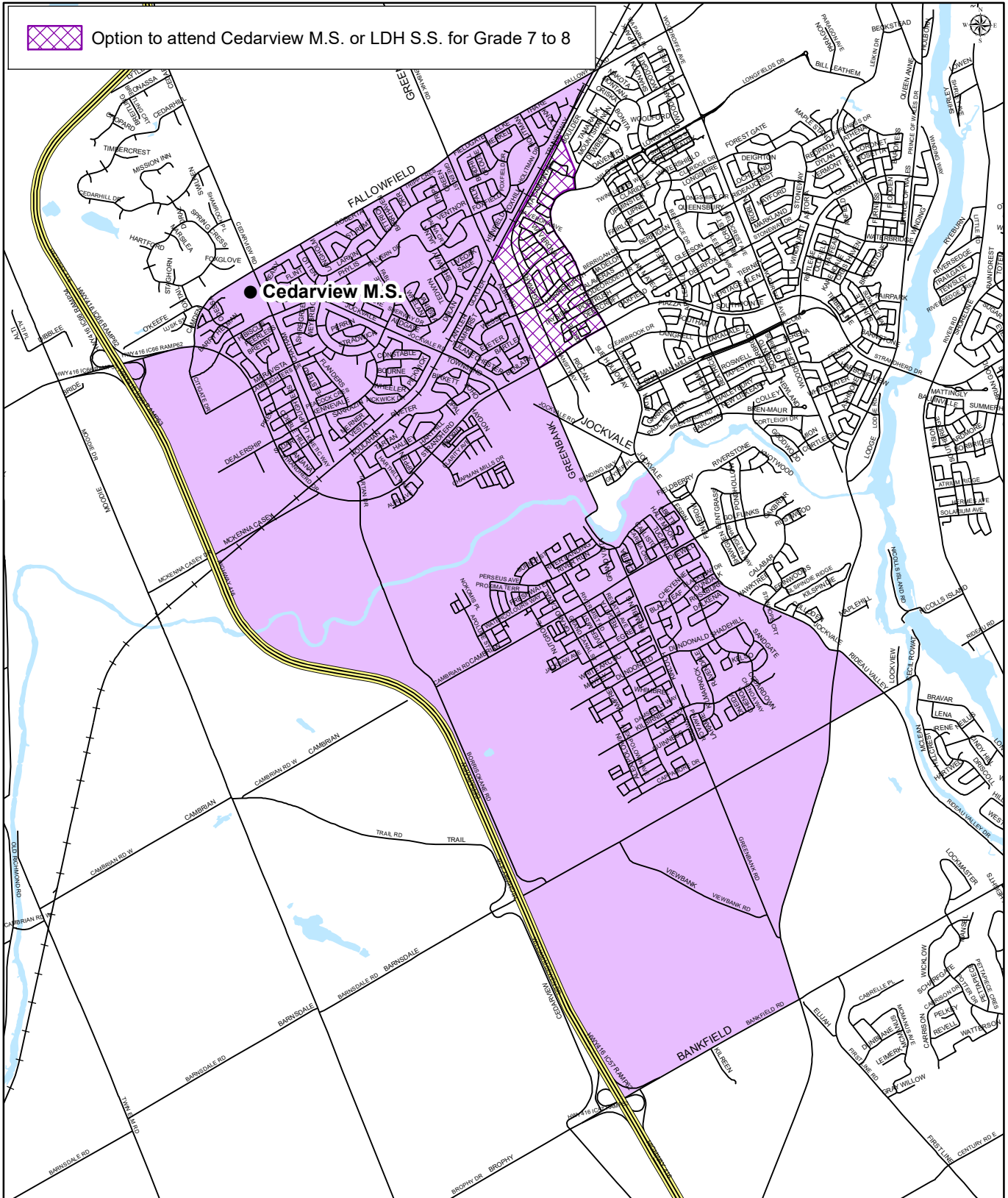


OTTAWA-CARLETON
DISTRICT SCHOOL BOARD

CEDARVIEW MIDDLE SCHOOL

Grade 7 to 8

English Program with Core French, Early French Immersion and Middle French Immersion Attendance Boundary



Cedarview Middle School
2760 Cedarview Road
Nepean, ON
K2J 4J2
(613) 825-2185

Map is for illustrative purposes only.
For further information, visit www.ocdsb.ca
September 2021

Historical and Projected Enrolments

School: Half Moon Bay Public School

Capacity = 674

Year	Prog	JK	SK	1	2	3	4	5	6	7	8	SE	Total
Actual Enrolment 2016	KGTN	80	81										161
	ENG			21	26	40	29	31					147
	EFI			61	52	44	45	43					245
	Total	80	81	82	78	84	74	74					553
Actual Enrolment 2017	KGTN	125	101										226
	ENG			11	35	33	40	28	38				185
	EFI			79	67	54	43	52	46				341
	Total	125	101	90	102	87	83	80	84				752
Actual Enrolment 2018	KGTN	104	135										239
	ENG			17	28	49	34	53	45				226
	EFI			97	80	67	53	38	56				391
	Total	104	135	114	108	116	87	91	101				856
Actual Enrolment 2019	KGTN	90	120										210
	ENG			21	21	39	49	37	58				225
	EFI			119	94	73	62	45	39				432
	Total	90	120	140	115	112	111	82	97				867
Actual Enrolment 2020	KGTN	95	102										197
	ENG			27	27	32	55	55	50				246
	EFI			108	117	88	64	55	50				482
	Total	95	102	135	144	120	119	110	100				925
Status Quo Projection 2021	KGTN	110	112										222
	ENG			28	38	38	44	60	66				274
	EFI			88	108	110	87	64	61				518
	Total	110	112	116	146	148	131	124	127				1014
Status Quo Projection 2022	KGTN	114	120										234
	ENG			32	35	47	48	52	70				284
	EFI			94	87	103	108	83	69				544
	Total	114	120	126	122	150	156	135	139				1062
Status Quo Projection 2023	KGTN	124	124										248
	ENG			32	39	44	57	56	62				290
	EFI			101	93	82	101	104	88				569
	Total	124	124	133	132	126	158	160	150				1107
Status Quo Projection 2024	KGTN	127	134										261
	ENG			32	39	48	54	65	66				304
	EFI			106	100	88	80	97	109				580
	Total	127	134	138	139	136	134	162	175				1145
Status Quo Projection 2025	KGTN	133	137										270
	ENG			33	39	48	58	62	75				315
	EFI			111	105	96	86	76	102				576
	Total	133	137	144	144	144	144	138	177				1161
Status Quo Projection 2026	KGTN	136	142										278
	ENG			34	40	48	58	66	72				318
	EFI			113	110	101	94	82	81				581
	Total	136	142	147	150	149	152	148	153				1177

Note

SE = Congregated Special Education Class(es)

Historical and Projected Enrolments

School: Cedarview Middle School

Capacity = 711

Year	Prog	JK	SK	1	2	3	4	5	6	7	8	SE	Total
Actual Enrolment 2016	ENG									169	158	6	333
	EFI									145	118		263
	G.ENG								12	12	12		36
	Total									314	276	6	632
Actual Enrolment 2017	ENG									178	189	6	373
	EFI									131	137		268
	G.ENG									13	12		25
	Total									322	338	6	666
Actual Enrolment 2018	ENG									183	194	5	382
	EFI									155	132		287
	G.ENG									12	13		25
	Total									350	339	5	694
Actual Enrolment 2019	ENG									199	187	5	391
	EFI									181	150		331
	MFI									27			27
	G.ENG									14	10		24
	Total									421	347	5	773
Actual Enrolment 2020	ENG									168	206	4	378
	EFI									126	178		304
	MFI									34	23		57
	G.ENG									11	14		25
	Total									339	421	4	764

Status Quo Projection 2021	ENG									156	177	4	337
	EFI									126	122		248
	MFI									17	34		51
	G.ENG									12	13		25
	Total									311	346	4	661
Status Quo Projection 2022	ENG									175	164	4	343
	EFI									145	122		267
	MFI									23	17		40
	G.ENG									12	13		25
	Total									355	316	4	675
Status Quo Projection 2023	ENG									169	183	4	356
	EFI									166	141		307
	MFI									14	23		37
	G.ENG									12	13		25
	Total									361	360	4	725
Status Quo Projection 2024	ENG									148	176	4	328
	EFI									197	162		359
	MFI									15	14		29
	G.ENG									12	13		25
	Total									372	365	4	741
Status Quo Projection 2025	ENG									163	156	4	323
	EFI									189	193		382
	MFI									19	15		34
	G.ENG									12	13		25
	Total									383	377	4	764
Status Quo Projection 2026	ENG									174	171	4	349
	EFI									228	185		413
	MFI									21	19		40
	G.ENG									12	13		25
	Total									435	388	4	827

Note

SE = Congregated Special Education Class(es)

**New Half Moon Bay Elementary School Study
Overview of Preliminary Options**

	Program/Grade	Boundary Division	School	Utilization		Impact on CVMS
				2022	2026	
Option A	Both HMB PS and New HMB ES offer JK-6 ENG/EFI	Brambling Way	HMB PS	77%	89%	No Impact
			New HMB ES	80%	86%	
Option A -1	Both HMB PS and New HMB ES offer JK-8 ENG/EFI	Brambling Way	HMB PS	94%	118%	Enrolment decreases to 62% in 2022 and to 65% in 2026
			New HMB ES	99%	111%	
Option B	HMB PS JK-6 ENG/EFI New HMB ES JK-6 EFI & 7-8 ENG/EFI	JK-6 ENG & 7-8 ENG/EFI is entire boundary area, EFI boundary as in A	HMB PS	104%	119%	Enrolment decreases to 62% in 2022 and to 65% in 2026
			New HMB ES	89%	110%	
Option C	HMB PS JK-3 ENG/EFI New HMB ES Gr 4-8 ENG/EFI	Entire Boundary	HMB PS	94%	107%	Enrolment decreases to 62% in 2022 and to 65% in 2026
			New HMB ES	99%	122%	
Option A Revised	Both HMB PS and New HMB ES offer JK-6 ENG/EFI	Cambrian Rd & New Subdivision West of new Greenbank Rd	HMB PS	67%	79%	No Impact
			New HMB ES	90%	96%	
Option A -1 Revised	Both HMB PS and New HMB ES offer JK-8 ENG/EFI	Cambrian Rd & New Subdivision West of new Greenbank Rd	HMB PS	80%	103%	Enrolment decreases to 62% in 2022 and to 65% in 2026
			New HMB ES	113%	125%	
Option B Revised	HMB PS JK-6 ENG/EFI New HMB ES JK-6 EFI & 7-8 ENG/EFI	JK-6 ENG & 7-8 ENG/EFI is entire boundary area, EFI boundary as in A Rvsd	HMB PS	96%	110%	Enrolment decreases to 62% in 2022 and to 65% in 2026
			New HMB ES	96%	118%	
Option B -1 New	HMB PS JK-6 ENG/EFI New HMB ES JK-6 EFI	JK-6 ENG is entire boundary area, EFI boundary as in A Rvsd	HMB PS	96%	110%	No Impact
			New HMB ES	61%	64%	

Note:

HMB PS = Half Moon Bay Public School

New HMB ES = New Half Moon Bay Elementary School

CVMS = Cedarview Middle School

Options dated Feb 25th and March 18th 2021

These are the 2 Options being presented for consultation April 28th renamed as A and A1

[New Half Moon Bay Elementary School Study - Ottawa-Carleton District School Board \(ocdsb.ca\)](http://ocdsb.ca)

Comment Sheet

New Half Moon Bay Elementary School - Accommodation Review

Public Consultation Period

Wednesday April 28th - May 11th, 2021

Please give us your comments on the accommodation Options being presented, following your review of the Powerpoint Video and the Information Package. You may submit your comments by **May 11th** by the following methods: e-mail, fax or regular mail.

Email: newHMBaySchoolStudy@ocdsb.ca

Fax: 613-820-5210

Mail: New Half Moon Bay Elementary School - Accommodation Review

Planning Department: 133 Greenbank Road, Ottawa, Ontario, K2H 6L3

Please also visit "[Consultations - Ottawa-Carleton District School Board \(ocdsb.ca\)](https://www.ocdsb.ca/consultations)"

All comments will be shared with Trustees in their original form.

Name, School Affiliation: _____

Please be advised that by submitting written comments to the Ottawa-Carleton District School Board you acknowledge and understand that any personal information appearing on your message such as, but not limited to: name, address, email address - as defined by the Municipal Freedom of Information and Protection of Privacy Act - may be disclosed publicly when your comments are circulated in connection with this issue.
