



OTTAWA-CARLETON
DISTRICT SCHOOL BOARD

New Half Moon Bay Elementary School

Opening for September 2022

Grade, Program Offering and Attendance Boundary Review



Background Information Package

Advisory Committee Meeting #1

**Virtual Meeting
5:30 - 7:30 pm
February 25, 2021**

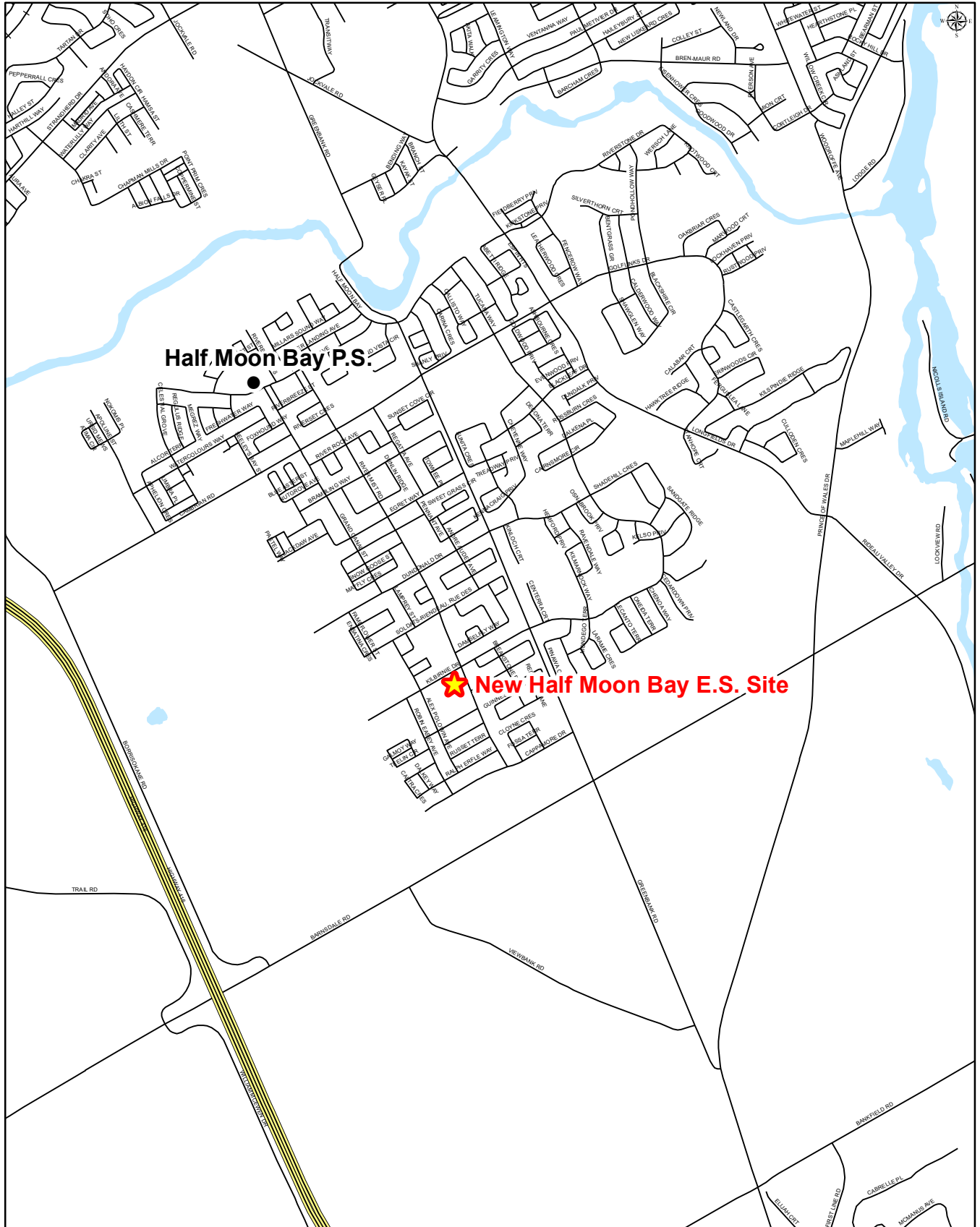
New Half Moon Bay Elementary School Consultation Timeline

Activity	Date
<p>Notice of Intention to Commence Study and Approve Study and Timeline</p> <ul style="list-style-type: none"> ➤ Committee of the Whole Meeting (online format) ➤ Board Approval of Study Consultation Plan/Timeline (virtual format) 	<p>14 November 2020</p> <p>15 December 2020</p>
<p>Consultative Stage</p> <ul style="list-style-type: none"> ➤ Formation of the Advisory Group ➤ Information Meeting #1 with Advisory Group (virtual 5:30 – 7:30 pm) ➤ Information Meeting #2 with Advisory Group (virtual format) ➤ Information Meetings <u>as required</u> with Advisory Group (virtual format) ➤ Public Consultation Meeting (potentially an online format) 	<p>January 2021</p> <p>25 February 2021</p> <p>March 2021</p> <p>March/April 2021</p> <p>April 2021</p>
<p>Recommendation and Decision Making Stage</p> <ul style="list-style-type: none"> ➤ Regular Committee of the Whole Meeting – Presentation of Staff Recommendation Report (potentially an online format) ➤ Regular Board Meeting – Final Decisions (potentially an online format) 	<p>May 2021</p> <p>June 2021</p>
<p>Communication and Implementation Stage</p> <ul style="list-style-type: none"> ➤ Communication of Board Approved Decision ➤ Implementation of Board Approved Decision 	<p>June 2021</p> <p>September 2022</p>

Location Map

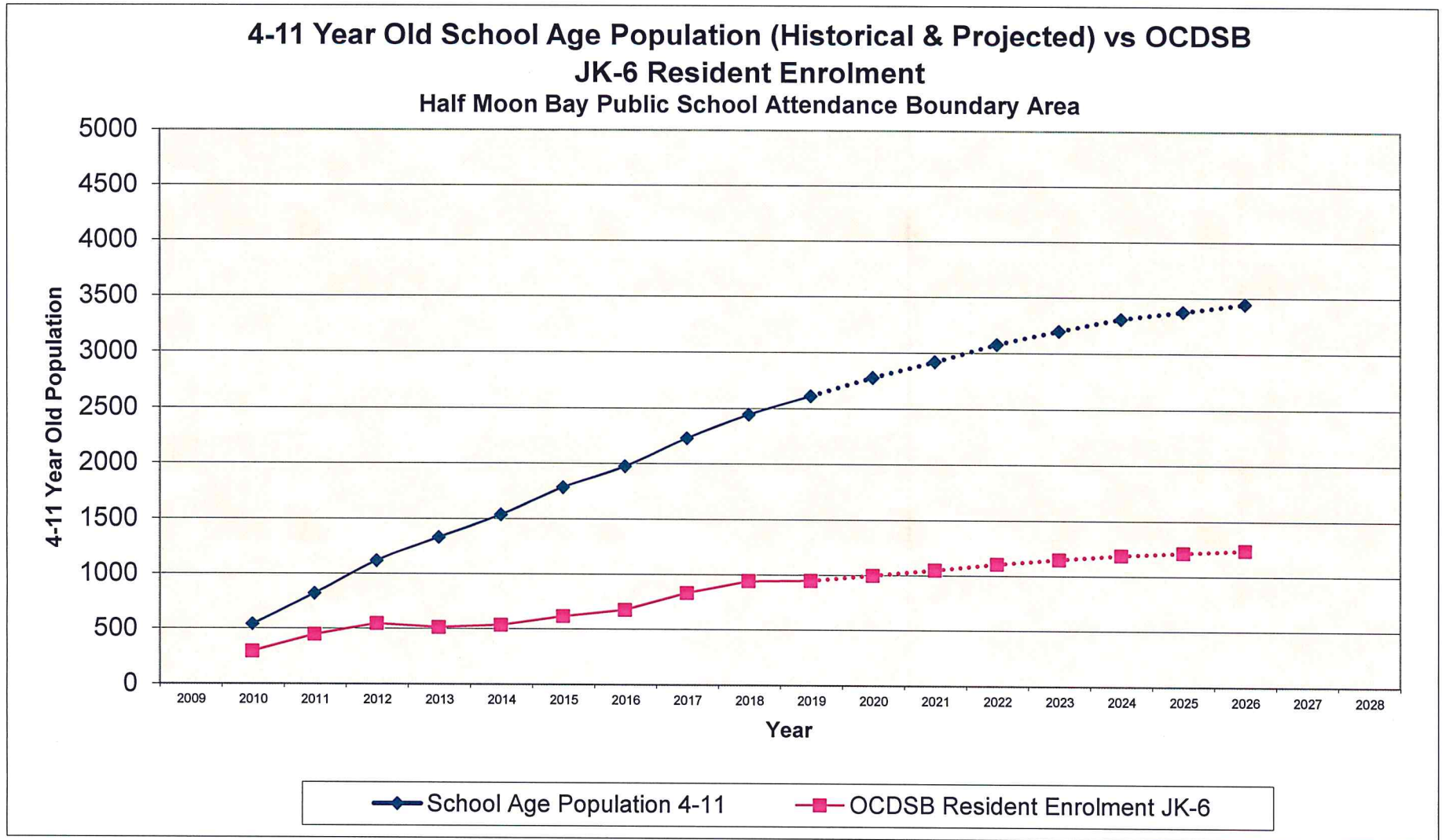


New Half Moon Bay Elementary School Site



School Age Population
vs
OCDSB Resident Enrolment

Ottawa-Carleton District School Board



Population History

Ottawa-Carleton District School Board
Half Moon Bay Public School

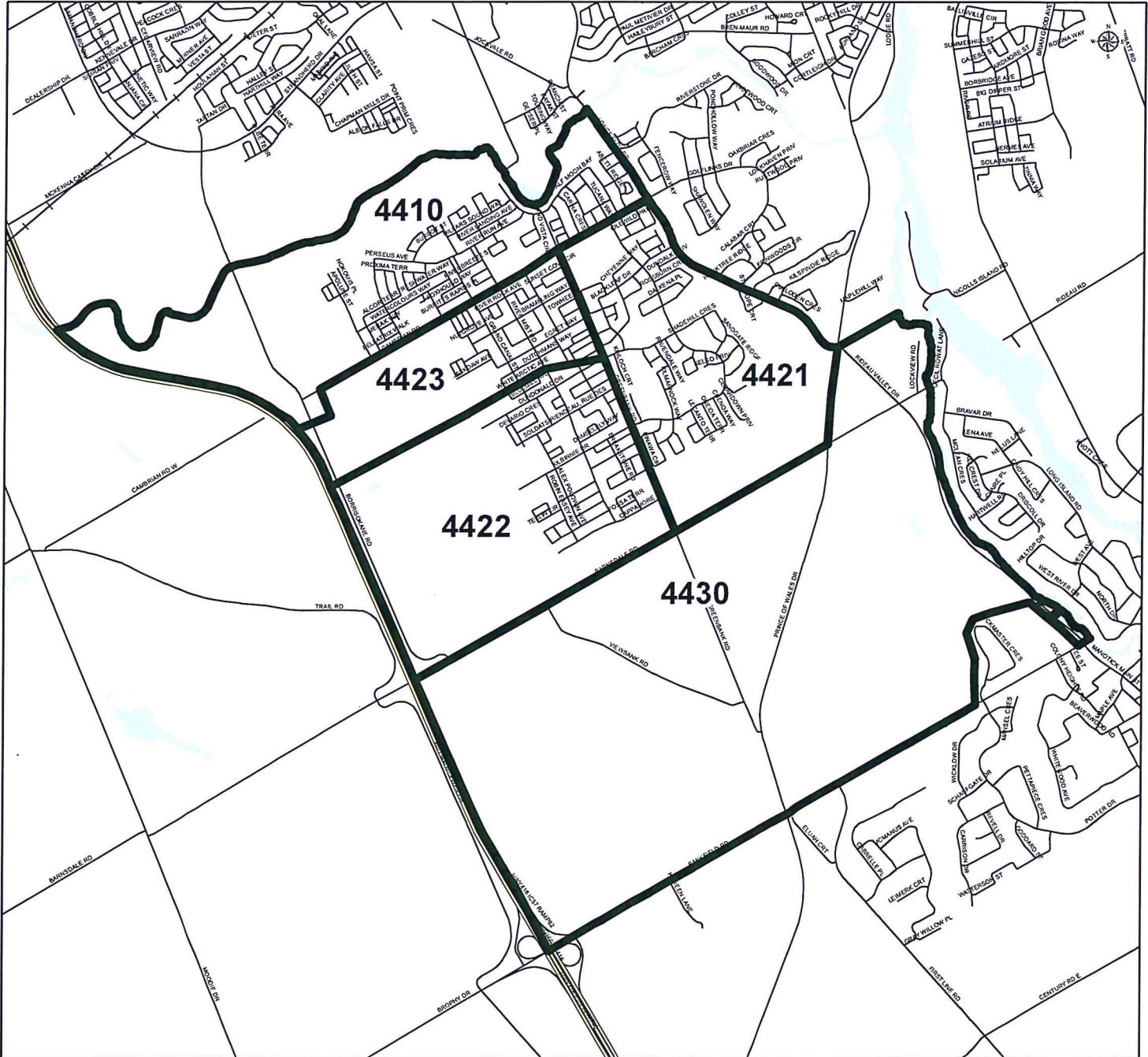
A History of the Number of Children in this Catchment

Age	2009	2010	2011	2012	2013	2014	2015	2016	2017	2018	2019
Births	n/a	122	211	195	238	221	234	241	244	269	n/a
1	n/a	110	145	220	200	238	225	235	255	240	275
2	n/a	105	160	180	235	215	250	245	250	280	255
3	n/a	115	160	180	200	255	250	265	255	265	305
4	n/a	105	145	200	200	205	270	265	295	295	295
5	n/a	95	130	170	215	225	220	280	280	325	325
6	n/a	90	125	170	190	240	235	245	290	305	340
7	n/a	55	125	145	185	205	250	250	270	325	335
8	n/a	65	75	150	145	205	220	270	270	300	340
9	n/a	55	90	90	165	165	220	235	305	295	325
10	n/a	40	70	105	105	175	175	235	250	320	315
11	n/a	35	60	85	125	115	190	190	265	275	335
12	n/a	50	50	80	90	135	130	210	205	280	300
13	n/a	50	65	65	100	110	150	145	220	230	300
14	n/a	50	60	85	80	105	120	155	160	235	250
15	n/a	35	65	85	95	85	110	135	180	170	255
16	n/a	30	50	85	100	105	90	115	145	200	190
17	n/a	30	45	65	95	100	115	110	135	165	215
Total		1237	1831	2355	2763	3104	3454	3826	4274	4774	4955
Age 4-11 JK-6		540	820	1115	1330	1535	1780	1970	2225	2440	2610

A "Catchment" is that geographic area which represents the formal attendance boundary of a school.

Development Information
Dwelling Units by Traffic Zone

City of Ottawa - Traffic Zones



New Dwelling Units by Traffic Zone.

Estimate of Total Dwelling Units, 2011 to 2020

Traffic Zone	Total Units Year End 2011	Net New Units									Total Units Year End 2020
		2012	2013	2014	2015	2016	2017	2018	2019	2020	
4410	1,124	51	34	0	0	0	247	120	291	378	2,245
4421	1,244	151	112	130	6	0	0	-1	19	32	1,693
4422	32	14	141	78	139	548	149	0	32	357	1,490
4423	500	188	174	222	85	55	77	78	125	32	1,536
4430	128	0	0	0	0	0	0	0	2	-1	129
Total	3028	404	461	430	230	603	473	197	469	798	7093

Attendance Boundaries
&
Enrolment History and Status Quo Projections

- Half Moon Bay Public School

&

- Cedarview Middle School

Historical and Projected Enrolments

School: Half Moon Bay Public School

Capacity = 674

Year	Prog	JK	SK	1	2	3	4	5	6	7	8	SE	Total
Actual Enrolment 2016	KGTN	80	81										161
	ENG			21	26	40	29	31					147
	EFI			61	52	44	45	43					245
	Total	80	81	82	78	84	74	74					553
Actual Enrolment 2017	KGTN	125	101										226
	ENG			11	35	33	40	28	38				185
	EFI			79	67	54	43	52	46				341
	Total	125	101	90	102	87	83	80	84				752
Actual Enrolment 2018	KGTN	104	135										239
	ENG			17	28	49	34	53	45				226
	EFI			97	80	67	53	38	56				391
	Total	104	135	114	108	116	87	91	101				856
Actual Enrolment 2019	KGTN	90	120										210
	ENG			21	21	39	49	37	58				225
	EFI			119	94	73	62	45	39				432
	Total	90	120	140	115	112	111	82	97				867
Actual Enrolment 2020	KGTN	95	102										197
	ENG			27	27	32	55	55	50				246
	EFI			108	117	88	64	55	50				482
	Total	95	102	135	144	120	119	110	100				925
Status Quo Projection 2021	KGTN	110	112										222
	ENG			28	38	38	44	60	66				274
	EFI			88	108	110	87	64	61				518
	Total	110	112	116	146	148	131	124	127				1014
Status Quo Projection 2022	KGTN	114	120										234
	ENG			32	35	47	48	52	70				284
	EFI			94	87	103	108	83	69				544
	Total	114	120	126	122	150	156	135	139				1062
Status Quo Projection 2023	KGTN	124	124										248
	ENG			32	39	44	57	56	62				290
	EFI			101	93	82	101	104	88				569
	Total	124	124	133	132	126	158	160	150				1107
Status Quo Projection 2024	KGTN	127	134										261
	ENG			32	39	48	54	65	66				304
	EFI			106	100	88	80	97	109				580
	Total	127	134	138	139	136	134	162	175				1145
Status Quo Projection 2025	KGTN	133	137										270
	ENG			33	39	48	58	62	75				315
	EFI			111	105	96	86	76	102				576
	Total	133	137	144	144	144	144	138	177				1161
Status Quo Projection 2026	KGTN	136	142										278
	ENG			34	40	48	58	66	72				318
	EFI			113	110	101	94	82	81				581
	Total	136	142	147	150	149	152	148	153				1177

Note

SE = Congregated Special Education Class(es)

Historical and Projected Enrolments

School: Cedarview Middle School

Capacity = 711

Year	Prog	JK	SK	1	2	3	4	5	6	7	8	SE	Total
Actual Enrolment 2016	ENG									169	158	6	333
	EFI									145	118		263
	G.ENG								12	12	12		36
	Total									314	276	6	632
Actual Enrolment 2017	ENG									178	189	6	373
	EFI									131	137		268
	G.ENG									13	12		25
	Total									322	338	6	666
Actual Enrolment 2018	ENG									183	194	5	382
	EFI									155	132		287
	G.ENG									12	13		25
	Total									350	339	5	694
Actual Enrolment 2019	ENG									199	187	5	391
	EFI									181	150		331
	MFI									27			27
	G.ENG									14	10		24
	Total									421	347	5	773
Actual Enrolment 2020	ENG									168	206	4	378
	EFI									126	178		304
	MFI									34	23		57
	G.ENG									11	14		25
	Total									339	421	4	764
Status Quo Projection 2021	ENG									156	177	4	337
	EFI									126	122		248
	MFI									17	34		51
	G.ENG									12	13		25
	Total									311	346	4	661
Status Quo Projection 2022	ENG									175	164	4	343
	EFI									145	122		267
	MFI									23	17		40
	G.ENG									12	13		25
	Total									355	316	4	675
Status Quo Projection 2023	ENG									169	183	4	356
	EFI									166	141		307
	MFI									14	23		37
	G.ENG									12	13		25
	Total									361	360	4	725
Status Quo Projection 2024	ENG									148	176	4	328
	EFI									197	162		359
	MFI									15	14		29
	G.ENG									12	13		25
	Total									372	365	4	741
Status Quo Projection 2025	ENG									163	156	4	323
	EFI									189	193		382
	MFI									19	15		34
	G.ENG									12	13		25
	Total									383	377	4	764
Status Quo Projection 2026	ENG									174	171	4	349
	EFI									228	185		413
	MFI									21	19		40
	G.ENG									12	13		25
	Total									435	388	4	827

Note

SE = Congregated Special Education Class(es)



HALF MOON BAY PUBLIC SCHOOL

Junior Kindergarten to Grade 6

OTTAWA-CARLETON
DISTRICT SCHOOL BOARD

English Program with Core French and Early French Immersion Attendance Boundary



Half Moon Bay Public School
3525 River Run Avenue
Nepean, Ontario
K2J 6E2
(613) 692-5454

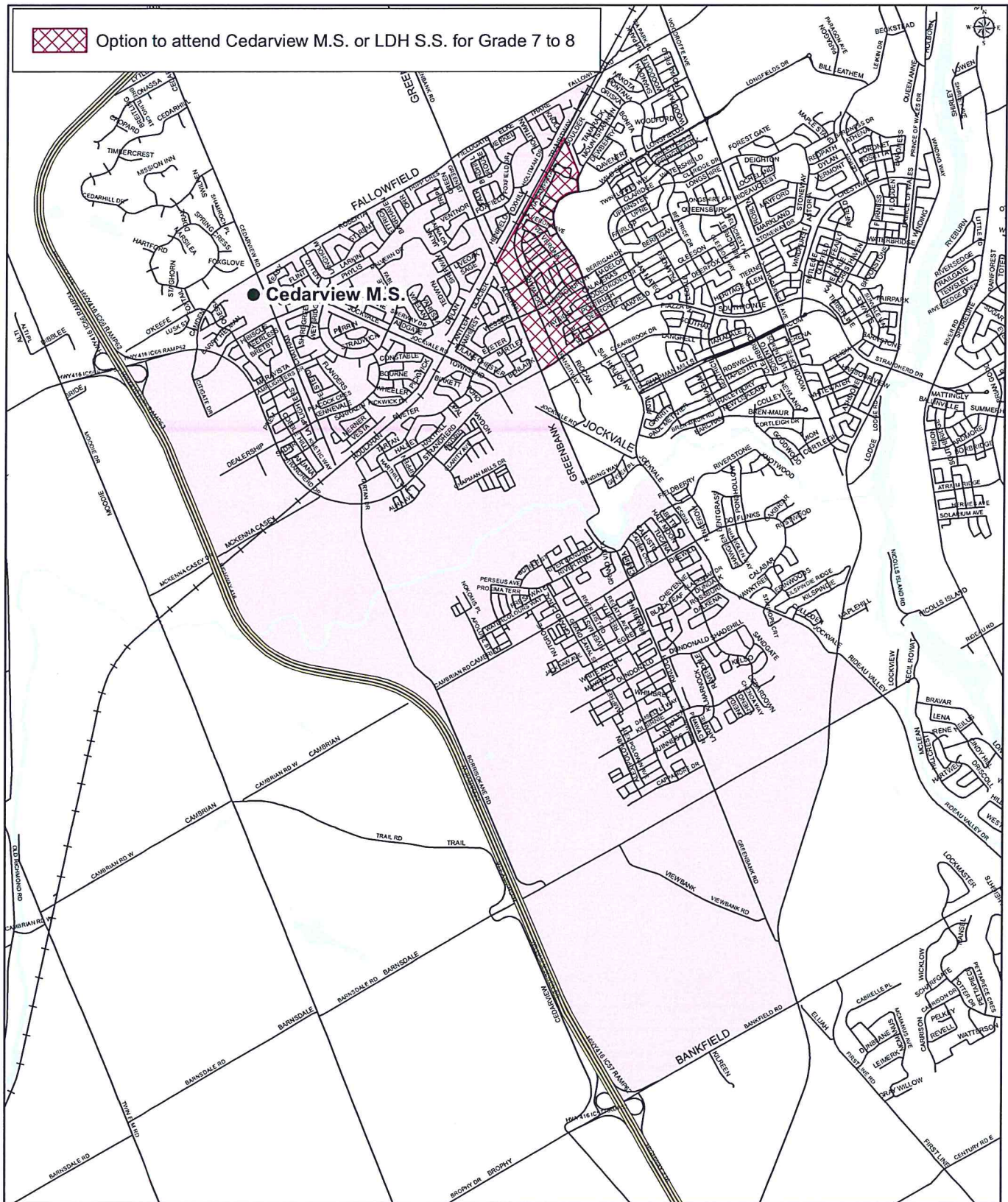
Map is for illustrative purposes only.
For further information, visit www.ocdsb.ca
September 2019



CEDARVIEW MIDDLE SCHOOL

Grade 7 to 8

English Program with Core French, Early French Immersion and Middle French Immersion Attendance Boundary



Cedarview Middle School
 2760 Cedarview Road
 Nepean, ON
 K2J 4J2
 (613) 825-2185

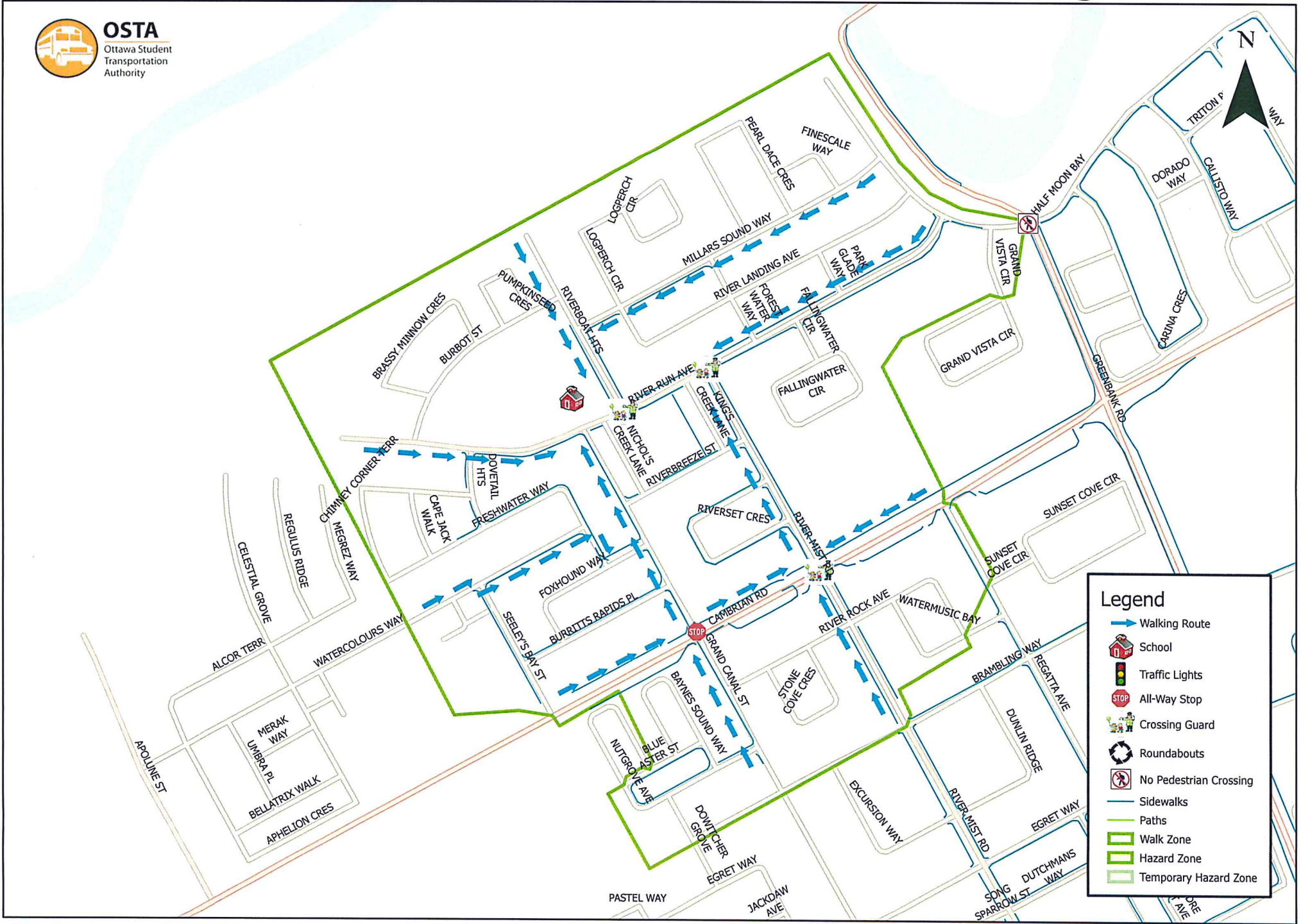
Map is for illustrative purposes only.
 For further information, visit www.ocdsb.ca
 September 2021

Transportation Information

Half Moon Bay PS

Current Walk Zones

Half Moon Bay Public School 800 m Walk Zone Kindergarten



This map is intended for information purposes only. Ottawa Student Transportation Authority assumes no responsibility for people using these routes.

Halt Moon Bay Public School 1.6 km Walk Zone Grades 1-6



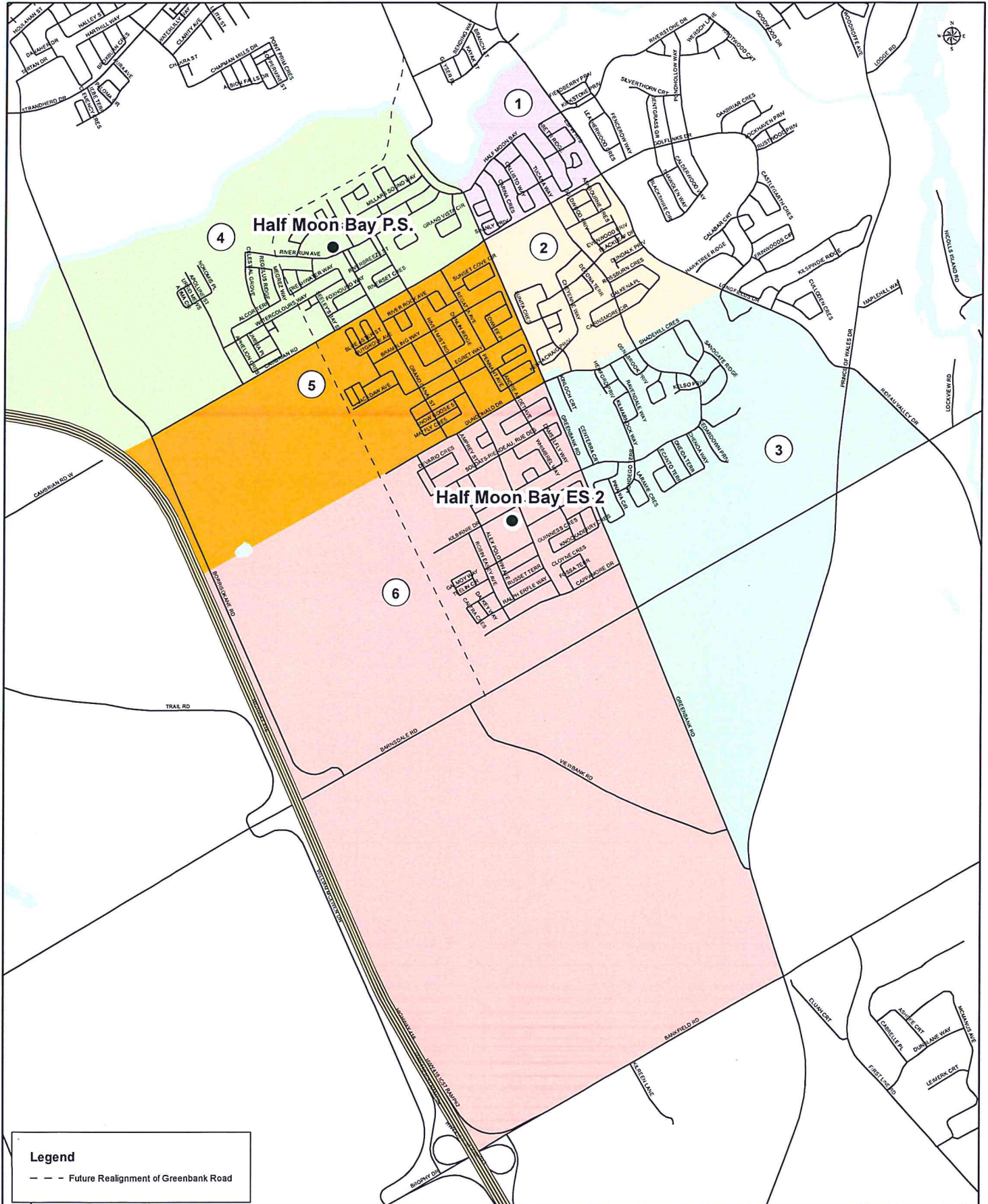
This map is intended for information purposes only. Ottawa Student Transportation Authority assumes no responsibility for people using these routes.

Student Distribution

by

Planning Area

Half Moon Bay Planning Areas



Student Distribution by Planning Area - October 2020

Half Moon Bay PS Area Students

Cedarview Middle School Area Students

Area 1:

	JK	KG	1	2	3	4	5	6	TOTAL
KGTN	4	3							7
REG			2	4	0	2	4	5	17
EFI			7	8	5	5	4	1	30
Total	4	3	9	12	5	7	8	6	54

Area 1:

	7	8	Total
ENG	6	2	8
EFI	1	0	1
Total	7	2	9

Area 2:

	JK	KG	1	2	3	4	5	6	TOTAL
KGTN	8	4							12
REG			3	2	2	6	5	5	23
EFI			12	13	16	8	11	9	69
Total	8	4	15	15	18	14	16	14	104

Area 2:

	7	8	Total
ENG	8	4	12
EFI	8	6	14
Total	16	10	26

Area 3:

	JK	KG	1	2	3	4	5	6	TOTAL
KGTN	3	6							9
REG			3	3	2	1	4	4	17
EFI			16	16	9	10	8	7	66
Total	3	6	19	19	11	11	12	11	92

Area 3:

	7	8	Total
ENG	3	13	16
EFI	10	7	17
Total	13	20	33

Area 4:

	JK	KG	1	2	3	4	5	6	TOTAL
KGTN	41	40							81
REG			11	7	14	24	17	17	90
EFI			35	33	21	19	11	11	130
Total	41	40	46	40	35	43	28	28	301

Area 4:

	7	8	Total
ENG	14	15	29
EFI	10	9	19
Total	24	24	48

Area 5:

	JK	KG	1	2	3	4	5	6	TOTAL
KGTN	26	26							52
REG			6	6	7	14	15	12	60
EFI			26	27	19	16	11	15	114
Total	26	26	32	33	26	30	26	27	226

Area 5:

	7	8	Total
ENG	14	15	29
EFI	10	9	19
Total	24	24	48

Area 6:

	JK	KG	1	2	3	4	5	6	TOTAL
KGTN	12	17							29
REG			2	5	6	7	10	5	35
EFI			10	19	16	6	9	5	65
Total	12	17	12	24	22	13	19	10	129

Area 6:

	7	8	Total
ENG	12	7	19
EFI	7	11	18
Total	19	18	37

Total for HMB PS

	JK	KG	1	2	3	4	5	6	TOTAL
KGTN	94	96							190
REG			0	27	31	54	55	48	242
EFI			106	116	86	64	54	48	474
Total	94	96	133	143	117	118	109	96	906

Total Cedarview MS

	7	8	Total
ENG	57	56	113
EFI	46	42	88
Total	103	98	201

Oct 30th data

Out of Boundary	17
In Person	612
Virtual Students	312
Total	924

Historical Student Distribution

Planning Area 1

Student Counts by Grade of Where Study Area Residents Attend

Program: Regular

Study Area: PA1

Students Included:

Schools of Attendance : Half Moon Bay PS

School of Attendance	Enrolment										Totals
	JK	K	1	2	3	4	5	6	7	8	JK-8
Half Moon Bay PS	7	7	1	2	7	2	4				30
2016-17	11	5	1	2	3	6	1	5			34
2017-18	10	9		2	6	2	6	2			37
2018-19	3	11	2		3	4	4	5			32
2019-20											

Totals by Grade

2016-17	7	7	1	2	7	2	4				30
2017-18	11	5	1	2	3	6	1	5			34
2018-19	10	9		2	6	2	6	2			37
2019-20	3	11	2		3	4	4	5			32

Student Counts by Grade of Where Study Area Residents Attend

Program: Board

Study Area: PA1

Students Included:

Schools of Attendance : Half Moon Bay PS

Program/Identifiers (students must meet any variable): **French Immersion - Early**

School of Attendance	Enrolment												Totals			
	JK	SK	1	2	3	4	5	6	7	8	9	10		11	12	JK-8
Half Moon Bay PS																
2015-16																0
2016-17			8	3	3	2	3									19
2017-18			7	6	4	2	2	3								24
2018-19			9	5	6	3	1	2								26
2019-20			7	6	4	5	2	1								25
Totals by Grade																
2015-16																0
2016-17			8	3	3	2	3									19
2017-18			7	6	4	2	2	3								24
2018-19			9	5	6	3	1	2								26
2019-20			7	6	4	5	2	1								25

Student Counts by Grade of Where Study Area Residents Attend

Program: Sum of all Programs

Study Area: PA1

Students Included:

Schools of Attendance : Half Moon Bay PS

School of Attendance	Enrolment										Totals
	JK	K	1	2	3	4	5	6	7	8	JK-8
Half Moon Bay PS	7	7	9	5	10	4	7				49
2016-17	7	7	9	5	10	4	7				49
2017-18	11	5	8	8	7	8	3	8			58
2018-19	10	9	9	7	12	5	7	4			63
2019-20	3	11	9	6	7	9	6	6			57

Totals by Grade

2016-17	7	7	9	5	10	4	7				49
2017-18	11	5	8	8	7	8	3	8			58
2018-19	10	9	9	7	12	5	7	4			63
2019-20	3	11	9	6	7	9	6	6			57

Historical Student Distribution

Planning Area 2

Student Counts by Grade of Where Study Area Residents Attend

Program: Regular

Study Area: PA 2

Students Included:

Schools of Attendance : Half Moon Bay PS

School of Attendance	Enrolment										Totals	
	JK	K	1	2	3	4	5	6	7	8	JK-8	
Half Moon Bay PS												
2016-17	17	12	2	5	10	5	6					57
2017-18	15	17	4	5	5	8	6	5				65
2018-19	12	17		5	5	6	8	10				63
2019-20	6	14	4	1	3	6	6	8				48

Totals by Grade

2016-17	17	12	2	5	10	5	6					57
2017-18	15	17	4	5	5	8	6	5				65
2018-19	12	17		5	5	6	8	10				63
2019-20	6	14	4	1	3	6	6	8				48

Student Counts by Grade or where Study Area Residents Attend

Program: Board

Study Area: PA2

Students Included:

Schools of Attendance : Half Moon Bay PS

Program/Identifiers (students must meet any variable): French Immersion - Early

School of Attendance	Enrolment												Totals			
	JK	SK	1	2	3	4	5	6	7	8	9	10		11	12	JK-8
Half Moon Bay PS																
2015-16																
2016-17			14	12	11	8	7									
2017-18			11	15	12	10	8	7								
2018-19			18	9	15	11	10	7								
2019-20			16	18	9	11	9	8								

Totals by Grade

2015-16																
2016-17			14	12	11	8	7									
2017-18			11	15	12	10	8	7								
2018-19			18	9	15	11	10	7								
2019-20			16	18	9	11	9	8								

Student Counts by Grade of Where Study Area Residents Attend

Program: Sum of all Programs

Study Area: PA 2

Students Included:

Schools of Attendance : Half Moon Bay PS

	Enrolment										Totals
School of Attendance	JK	K	1	2	3	4	5	6	7	8	JK-8

Half Moon Bay PS

2016-17	17	12	16	17	21	13	13				109
2017-18	15	17	15	20	17	18	14	12			128
2018-19	12	17	18	14	20	17	18	17			133
2019-20	6	14	20	19	12	17	15	16			119

Totals by Grade

2016-17	17	12	16	17	21	13	13				109
2017-18	15	17	15	20	17	18	14	12			128
2018-19	12	17	18	14	20	17	18	17			133
2019-20	6	14	20	19	12	17	15	16			119

Historical Student Distribution

Planning Area 3

Student Counts by Grade of Where Study Area Residents Attend

Program: Regular

Study Area: PA 3

Students Included:

Schools of Attendance : Half Moon Bay PS

School of Attendance	Enrolment										Totals
	JK	K	1	2	3	4	5	6	7	8	JK-8
Half Moon Bay PS	10	12	3	1	2	7					35
2016-17	20	11	1	3	1	2	7	1			46
2017-18	20	24	2	1	5	3	1	8			64
2018-19	4	20	5	2	3	4	3	1			42
2019-20											

Totals by Grade

2016-17	10	12	3	1	2	7					35
2017-18	20	11	1	3	1	2	7	1			46
2018-19	20	24	2	1	5	3	1	8			64
2019-20	4	20	5	2	3	4	3	1			42

Student Counts by Grade of Where Study Area Residents Attend

Program: Board

Study Area: PA3

Students Included:

Schools of Attendance : Half Moon Bay PS

Program/Identifiers (students must meet any variable): French Immersion - Early

School of Attendance	Enrolment													Totals		
	JK	SK	1	2	3	4	5	6	7	8	9	10	11		12	JK-8
Half Moon Bay PS																
2015-16																0
2016-17			12	11	12	10	13									58
2017-18			12	12	9	11	13	14								71
2018-19			11	14	11	7	11	12								66
2019-20			16	9	11	9	6	11								62
Totals by Grade																
2015-16																0
2016-17			12	11	12	10	13									58
2017-18			12	12	9	11	13	14								71
2018-19			11	14	11	7	11	12								66
2019-20			16	9	11	9	6	11								62

Student Counts by Grade of Where Study Area Residents Attend

Program: Sum of all Programs

Study Area: PA 3

Students Included:

Schools of Attendance : Half Moon Bay PS

School of Attendance	Enrolment											Totals
	JK	K	1	2	3	4	5	6	7	8	JK-8	
Half Moon Bay PS	10	12	15	12	14	17	13					93
2016-17	20	11	13	15	10	13	20	15				117
2017-18	20	24	13	15	16	10	12	20				130
2018-19	4	20	21	11	14	13	9	12				104
2019-20												

Totals by Grade

2016-17	10	12	15	12	14	17	13					93
2017-18	20	11	13	15	10	13	20	15				117
2018-19	20	24	13	15	16	10	12	20				130
2019-20	4	20	21	11	14	13	9	12				104

Historical Student Distribution

Planning Area 4

Student Counts by Grade of Where Study Area Residents Attend

Program: Regular

Study Area: PA 4 SD

Students Included:

Schools of Attendance : Half Moon Bay PS

School of Attendance	Enrolment										Totals
	JK	K	1	2	3	4	5	6	7	8	JK-8
Half Moon Bay PS	17	22	3	3	4	2	5				56
2016-17	22	21	4	2	5	6	1	7			68
2017-18	29	31	5	16	8	9	15	10			123
2018-19	34	35	2	7	19	11	8	15			131
2019-20											

Totals by Grade

2016-17	17	22	3	3	4	2	5				56
2017-18	22	21	4	2	5	6	1	7			68
2018-19	29	31	5	16	8	9	15	10			123
2019-20	34	35	2	7	19	11	8	15			131

Student Counts by Grade or Where Study Area Residents Attend

Program: Board

Study Area: PA4

Students Included:

Schools of Attendance : Half Moon Bay PS

Program/Identifiers (students must meet any variable): French Immersion - Early

School of Attendance	Enrolment													Totals		
	JK	SK	1	2	3	4	5	6	7	8	9	10	11		12	JK-8
Half Moon Bay PS																
2015-16																0
2016-17			10	8	7	6	5									36
2017-18			21	12	6	10	7	5								61
2018-19			21	19	12	8	9	9								78
2019-20			33	22	17	10	7	10								99
Totals by Grade																
2015-16																0
2016-17			10	8	7	6	5									36
2017-18			21	12	6	10	7	5								61
2018-19			21	19	12	8	9	9								78
2019-20			33	22	17	10	7	10								99

Student Counts by Grade of Where Study Area Residents Attend

Program: Sum of all Programs

Study Area: PA 4 SD

Students Included:

Schools of Attendance : Half Moon Bay PS

School of Attendance	Enrolment										Totals
	JK	K	1	2	3	4	5	6	7	8	JK-8
Half Moon Bay PS	17	22	13	11	11	8	10				92
2016-17	22	21	25	14	11	16	8	12			129
2017-18	29	31	26	35	20	17	24	19			201
2018-19	34	35	35	29	36	21	15	25			230
2019-20											

Totals by Grade

2016-17	17	22	13	11	11	8	10				92
2017-18	22	21	25	14	11	16	8	12			129
2018-19	29	31	26	35	20	17	24	19			201
2019-20	34	35	35	29	36	21	15	25			230

Historical Student Distribution

Planning Area 5

Student Counts by Grade of Where Study Area Residents Attend

Program: Regular

Study Area: PA 5 SD

Students Included:

Schools of Attendance : Half Moon Bay PS

School of Attendance	Enrolment										Totals
	JK	K	1	2	3	4	5	6	7	8	JK-8
Half Moon Bay PS	18	22	9	10	8	9	8				84
2016-17	30	23		14	11	9	9	11			107
2017-18	27	29	5	1	16	8	13	8			107
2018-19	26	31	6	5	7	14	11	17			117
2019-20											

Totals by Grade

2016-17	18	22	9	10	8	9	8				84
2017-18	30	23		14	11	9	9	11			107
2018-19	27	29	5	1	16	8	13	8			107
2019-20	26	31	6	5	7	14	11	17			117

Student Counts by Grade of Where Study Area Residents Attend

Program: Board

Study Area: PA5

Students Included:

Schools of Attendance : Half Moon Bay PS

Program/Identifiers (students must meet any variable): French Immersion - Early

School of Attendance	Enrolment													Totals		
	JK	SK	1	2	3	4	5	6	7	8	9	10	11		12	JK-8
Half Moon Bay PS																0
2015-16																0
2016-17			11	14	8	15	8									56
2017-18			21	9	16	7	14	6								73
2018-19			21	21	11	17	4	17								91
2019-20			25	23	22	15	16	6								107
Totals by Grade																
2015-16																0
2016-17			11	14	8	15	8									56
2017-18			21	9	16	7	14	6								73
2018-19			21	21	11	17	4	17								91
2019-20			25	23	22	15	16	6								107

Student Counts by Grade of Where Study Area Residents Attend

Program: Sum of all Programs

Study Area: PA 5 SD

Students Included:

Schools of Attendance : Half Moon Bay PS

School of Attendance	Enrolment										Totals
	JK	K	1	2	3	4	5	6	7	8	JK-8
Half Moon Bay PS	18	22	20	24	16	24	16				140
2016-17	30	23	21	23	27	16	23	17			180
2017-18	27	29	26	22	27	25	17	25			198
2018-19	26	31	31	28	29	29	27	23			224
2019-20											

Totals by Grade

2016-17	18	22	20	24	16	24	16				140
2017-18	30	23	21	23	27	16	23	17			180
2018-19	27	29	26	22	27	25	17	25			198
2019-20	26	31	31	28	29	29	27	23			224

Historical Student Distribution

Planning Area 6

Student Counts by Grade of Where Study Area Residents Attend

Program: Regular

Study Area: PA 6 SD

Students Included:

Schools of Attendance : Half Moon Bay PS

School of Attendance	Enrolment										Totals	
	JK	K	1	2	3	4	5	6	7	8	JK-8	
Half Moon Bay PS												
2016-17	10	6	2	4	7	3	6					38
2017-18	26	20	1	8	8	8	4	9				84
2018-19	6	24	5	2	9	6	9	7				68
2019-20	17	9	3	6	3	10	5	10				63

Totals by Grade

2016-17	10	6	2	4	7	3	6					38
2017-18	26	20	1	8	8	8	4	9				84
2018-19	6	24	5	2	9	6	9	7				68
2019-20	17	9	3	6	3	10	5	10				63

Student Counts by Grade of Where Study Area Residents Attend

Program: Board

Study Area: PA6

Students Included:

Schools of Attendance : Half Moon Bay PS

Program/Identifiers (students must meet any variable): French Immersion - Early

Enrolment														Totals
JK	SK	1	2	3	4	5	6	7	8	9	10	11	12	JK-8

Totals by Grade

2015-16															0
2016-17		5	3	2	4	5									19
2017-18		7	13	6	2	7	8								43
2018-19		16	12	12	5	3	9								57
2019-20		22	15	10	12	4	3								66

Student Counts by Grade of Where Study Area Residents Attend

Program: Sum of all Programs

Study Area: PA 6 SD

Students Included:

Schools of Attendance : Half Moon Bay PS

School of Attendance	Enrolment										Totals
	JK	K	1	2	3	4	5	6	7	8	JK-8
Half Moon Bay PS	10	6	7	7	9	7	11				57
2016-17	26	20	8	21	14	10	11	17			127
2017-18	6	24	21	14	21	11	12	16			125
2018-19	17	9	25	21	13	22	9	13			129
2019-20											

Totals by Grade

2016-17	10	6	7	7	9	7	11				57
2017-18	26	20	8	21	14	10	11	17			127
2018-19	6	24	21	14	21	11	12	16			125
2019-20	17	9	25	21	13	22	9	13			129